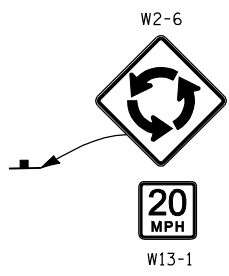
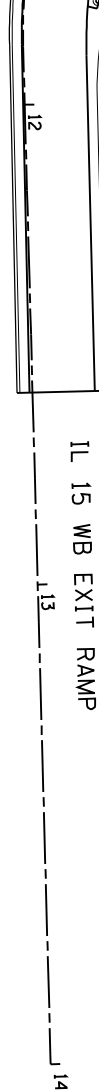
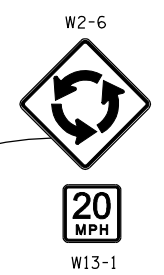
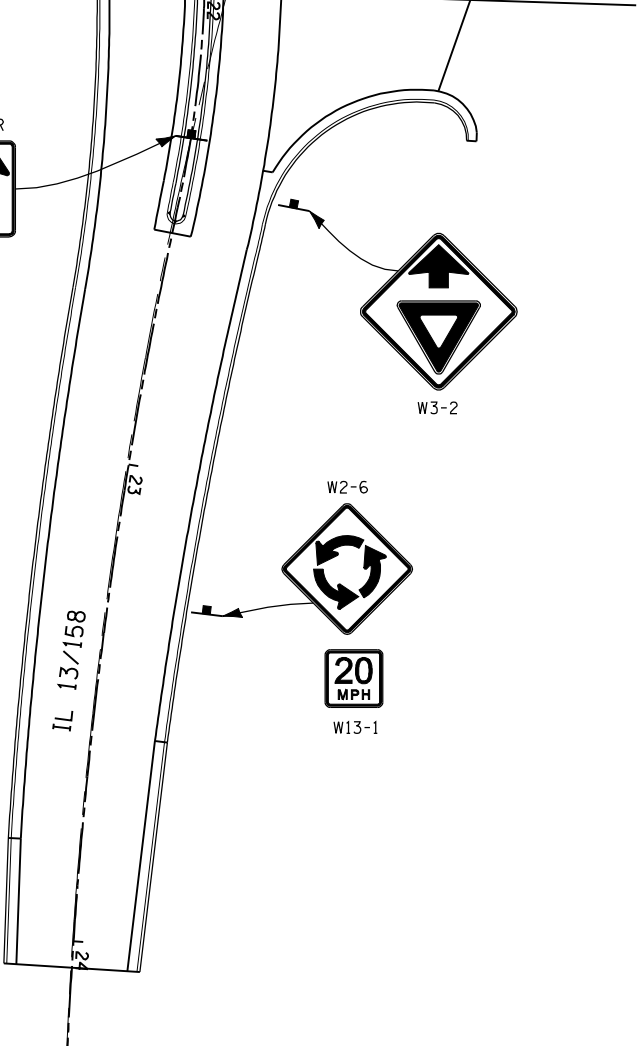


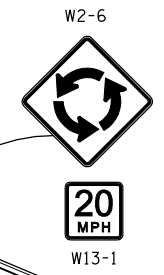
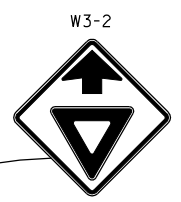
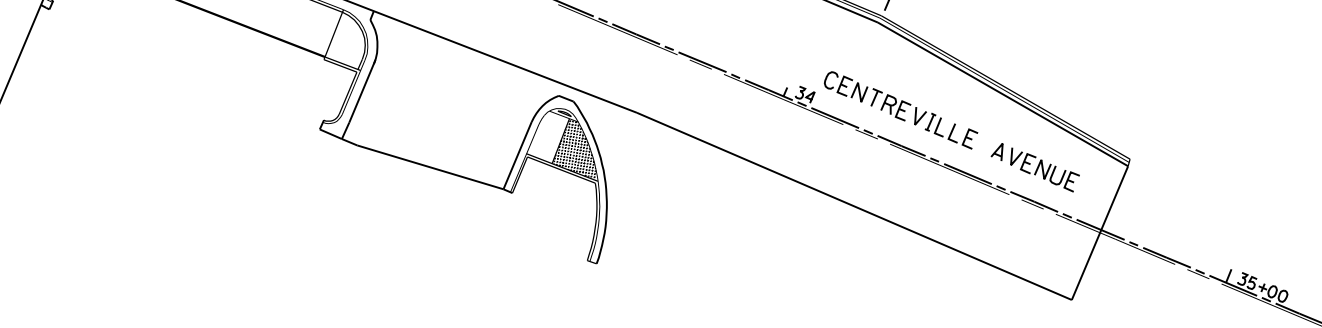
MATCH LINE STA 11+75 (SHT NO. 2)



MATCH LINE STA 22+00 (SHT NO. 2)

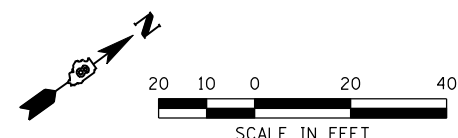


MATCH LINE STA 32+50 (SHT NO. 2)



R3-1100
RIGHT
TURN
LANE

NOTE: SEE SIGNING SCHEDULE FOR SIZES.



FILE NAME = ...\\116-D876D06-Sht-Sign-004.dgn	USER NAME = CFC...	DESIGNED -	REVISED -
		DRAWN -	REVISED -
	PLOT SCALE = 40.0000' / IN.	CHECKED -	REVISED -
	PLOT DATE = 3/19/2012	DATE -	REVISED -

**STATE OF ILLINOIS
DEPARTMENT OF TRANSPORTATION**

**HORNER &
SHIRIN, INC.
ENGINEERS**

SIGNING DETAILS
IL 15 WESTBOUND EXIT RAMP, IL 13 EAST LEG
& IL 158 / CENTREVILLE AVENUE

① F.A.P. RTE 809 / F.A.U. RTE 9269			
F.A. RTE.	SECTION	COUNTY	TOTAL SHEETS
①	135-N	ST. CLAIR	206
			SHEET NO. 116
CONTRACT NO. 76D06			
ILLINOIS FED. AID PROJECT			

SCALE: 1" = 20' SHEET NO. 4 OF 4 SHEETS STA. TO STA.