

OVERPASS ELEVATION
(Not to Scale)

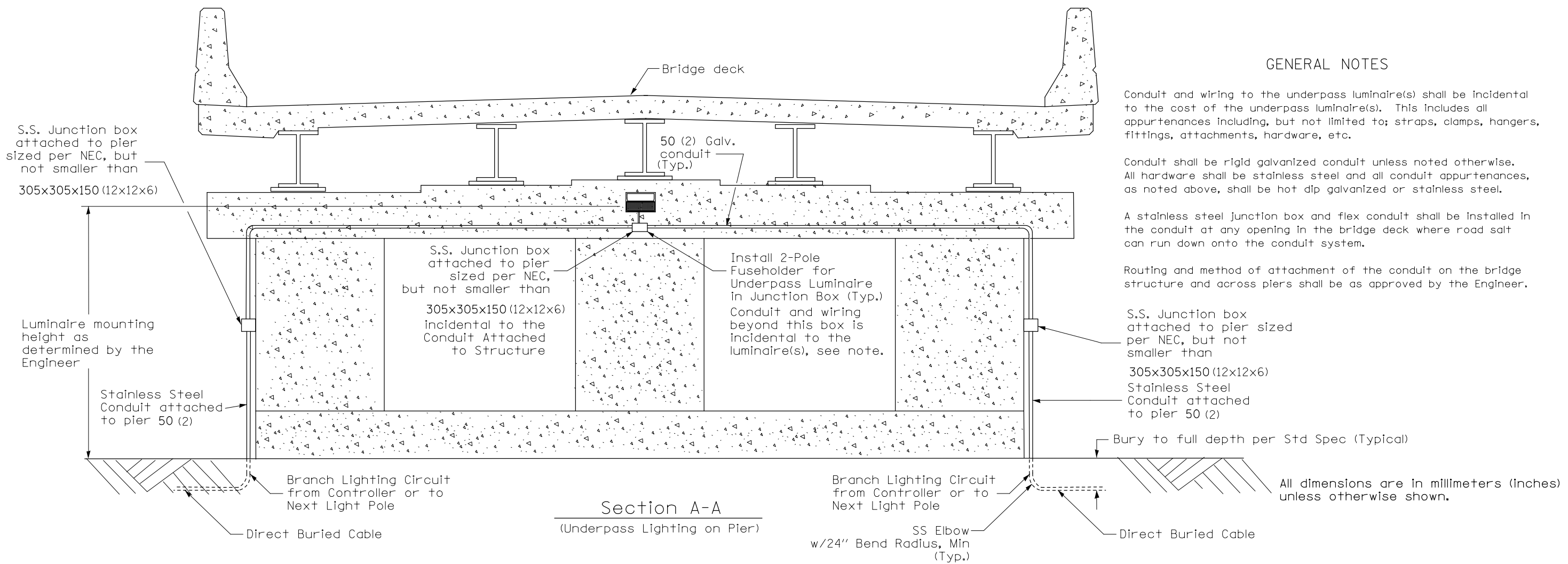
GENERAL NOTES

Conduit and wiring to the underpass luminaire(s) shall be incidental to the cost of the underpass luminaire(s). This includes all appurtenances including, but not limited to; straps, clamps, hangers, fittings, attachments, hardware, etc.

Conduit shall be rigid galvanized conduit unless noted otherwise. All hardware shall be stainless steel and all conduit appurtenances, as noted above, shall be hot dip galvanized or stainless steel.

A stainless steel junction box and flex conduit shall be installed in the conduit at any opening in the bridge deck where road salt can run down onto the conduit system.

Routing and method of attachment of the conduit on the bridge structure and across piers shall be as approved by the Engineer.



Section A-A
(Underpass Lighting on Pier)

All dimensions are in millimeters (inches) unless otherwise shown.

FILE NAME =	USER NAME = prestonme	DESIGNED -	REVISED -	STATE OF ILLINOIS DEPARTMENT OF TRANSPORTATION	UNDERPASS LIGHTING WITHOUT CENTER PIER DETAIL				F.A.P. RTE.	SECTION	COUNTY	TOTAL SHEETS	SHEET NO.
et:\pwork\pwork\prestonme\d0133118\d0876d06-sh1-light.dgn		DRAWN -	REVISED -		809	135-N	ST. CLAIR	206	135				
PLOT SCALE = 50.0000' / in.		CHECKED -	REVISED -		CONTRACT NO. 76D06				FED. ROAD DIST. NO.	ILLINOIS FED. AID PROJECT			
PLOT DATE = 5/17/2012		DATE -	REVISED -		SCALE:	SHEET NO.	OF SHEETS	STA.	TO STA.				