

REMOVE SIGN PANEL ASSEMBLY-TYPE A
STA 11+94.00 7.75' RT

MATCH LINE STA 11+75 (SHT NO. 2)

PT Sta 11+87.85

REMOVE SIGN PANEL-TYPE 1
STA 11+93.00 24.00' LT
(WRONG WAY)

PAVED DITCH REMOVAL
STA 11+75.00 27.30 LT TO
STA 12+29.86 27.24 LT
51.68'

SIGN PANEL ASSEMBLY
TO REMAIN IN PLACE

MATCH LINE STA 22+00 (SHT NO. 2)

END PROJECT
STA 12+60.00

IL ROUTE 15 WB EXIT RAMP

POT Sta 14+00.00

END PROJECT
STA 24+05.55

IL ROUTE 158/13

PRC Sta 22+45.55

222' - COMB CURB GUTTER REM
STA 22+17.02 TO 24+05.55 LT

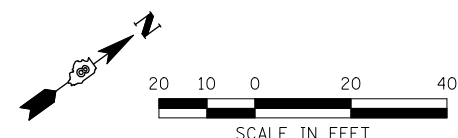
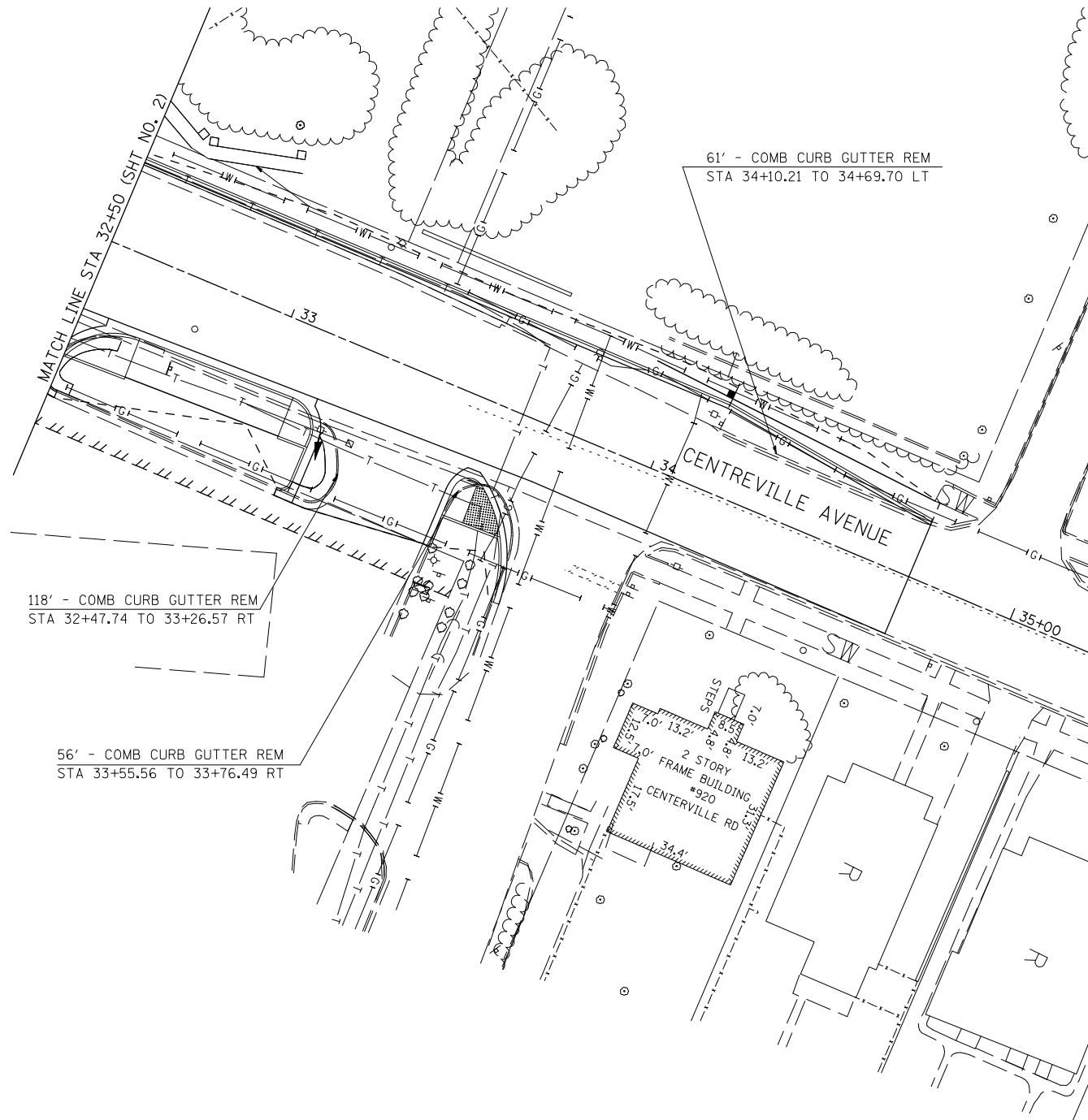
SIGN PANEL ASSEMBLY
REMOVE AND REINSTALL

7' - COMB CURB GUTTER REM
STA 23+98.83 TO 24+05.55 RT

118' - COMB CURB GUTTER REM
STA 32+47.74 TO 33+26.57 RT

56' - COMB CURB GUTTER REM
STA 33+55.56 TO 33+76.49 RT

61' - COMB CURB GUTTER REM
STA 34+10.21 TO 34+69.70 LT



LAST SAVED = 2/20/2012
PEN TABLE = V8-H4-14-14
PLOT DRIVER = TR-18pdf-Block-Half.plt

FILE NAME =	USER NAME = beriechmann	DESIGNED -	REVISED -
1:\0906600\0906603\cad\1\plans\098-D876006-Sht-Rem-04.dgn		DRAWN -	REVISED -
		CHECKED -	REVISED -
		DATE -	REVISED -
PLOT SCALE = 40.0000' / IN.			
PLOT DATE = 3/20/2012 4:13:00 PM			

STATE OF ILLINOIS
DEPARTMENT OF TRANSPORTATION

HORNER &
SHIRIN, INC.
ENGINEERS

SCALE: 1" = 20'

REMOVAL DETAILS
IL 15 WESTBOUND EXIT RAMP, IL 13 EAST LEG
& IL 158 / CENTREVILLE AVENUE

SHEET NO. 4 OF 4 SHEETS STA. TO STA.

① F.A.P. RTE 809 / F.A.U. RTE 9251 / F.A.U. RTE 9269

F.A. RTE.	SECTION	COUNTY	TOTAL SHEETS	SHEET NO.
①	135-N	ST. CLAIR	206	141
CONTRACT NO. 76D06				

ILLINOIS FED. AID PROJECT