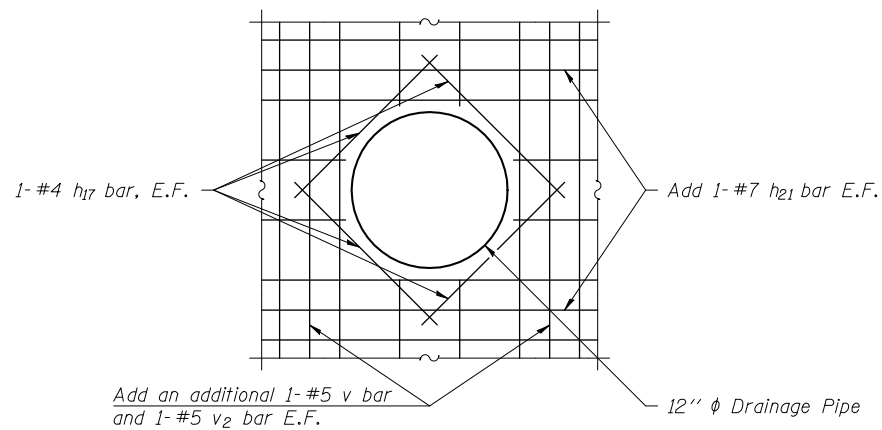
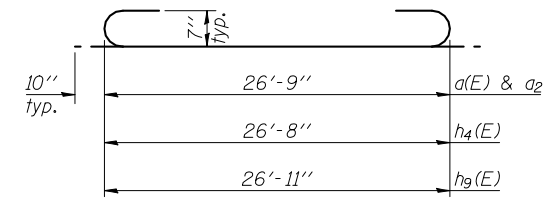


PARTIAL DEVELOPED ELEVATION
(Horiz. dimensions shown are along wall)

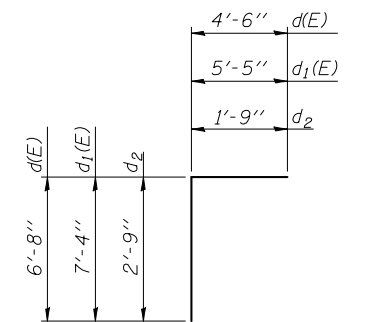
Note:
For details of railings, see sheet 15 of 20.



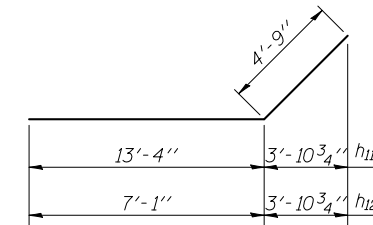
DRAINAGE PIPE VOID REINFORCEMENT
(For pipe locations on walls and details, see sheet 1 of 20 and Roadway Plans)



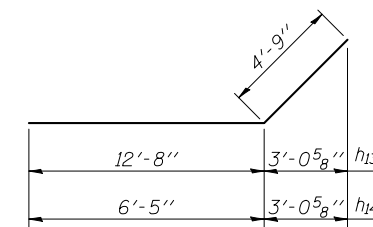
BARS a(E), a₂, h₄(E), & h₉(E)



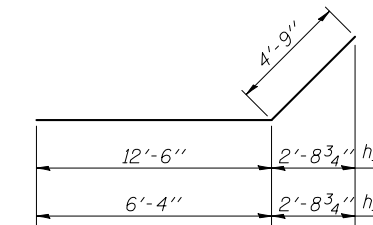
BARS d(E), d₁(E), & d₂



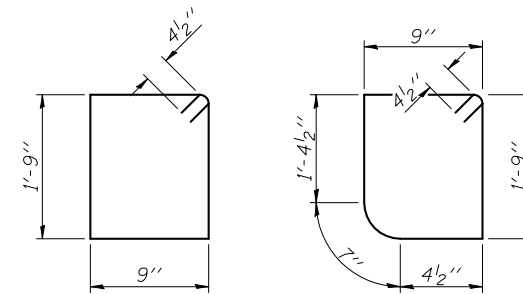
BARS h₁₁ & h₁₂



BARS h₁₃ & h₁₄



BARS h₁₅ & h₁₆



BAR s(E)

BAR s₁(E)

BILL OF MATERIAL

Bar	No.	Size	Length	Shape
a(E)	84	#7	28'-5"	U
a ₁ (E)	105	#7	26'-9"	—
a ₂	86	#7	28'-5"	U
a ₃	107	#7	26'-9"	—
d(E)	46	#6	11'-2"	L
d ₁ (E)	46	#6	12'-9"	L
d ₂	54	#4	4'-6"	L
h(E)	64	#5	30'-9"	—
h ₁ (E)	64	#5	34'-9"	—
h ₂	64	#5	30'-9"	—
h ₃	64	#5	34'-9"	—
h ₄ (E)	2	#7	28'-4"	U
h ₅ (E)	2	#7	26'-8"	—
h ₆	72	#7	30'-9"	—
h ₇	72	#7	39'-9"	—
h ₈	6	#6	27'-2"	—
h ₉ (E)	2	#7	28'-7"	U
h ₁₀ (E)	12	#5	26'-9"	—
h ₁₁	32	#9	18'-1"	—
h ₁₂	26	#9	11'-10"	—
h ₁₃	28	#9	17'-5"	—
h ₁₄	23	#9	11'-2"	—
h ₁₅	28	#9	17'-3"	—
h ₁₆	23	#9	11'-1"	—
h ₁₇	24	#4	4'-2"	—
h ₁₈ (E)	64	#5	4'-9"	—
h ₁₉	64	#5	4'-9"	—
h ₂₀	18	#9	12'-0"	—
h ₂₁	12	#7	7'-0"	—
s(E)	27	#4	5'-9"	□
s ₁ (E)	27	#4	5'-7"	□
v	301	#5	12'-6"	—
v ₁	142	#6	12'-6"	—
v ₂	301	#5	4'-0"	—
v ₃	142	#6	4'-5"	—
v ₄	4	#4	18'-1"	—
v ₅	8	#4	16'-9"	—
Concrete Box Culverts		Cu. Yd.	314.6	
Reinforcement Bars		Pound	44,270	
Reinforcement Bars, Epoxy Coated		Pound	17,840	