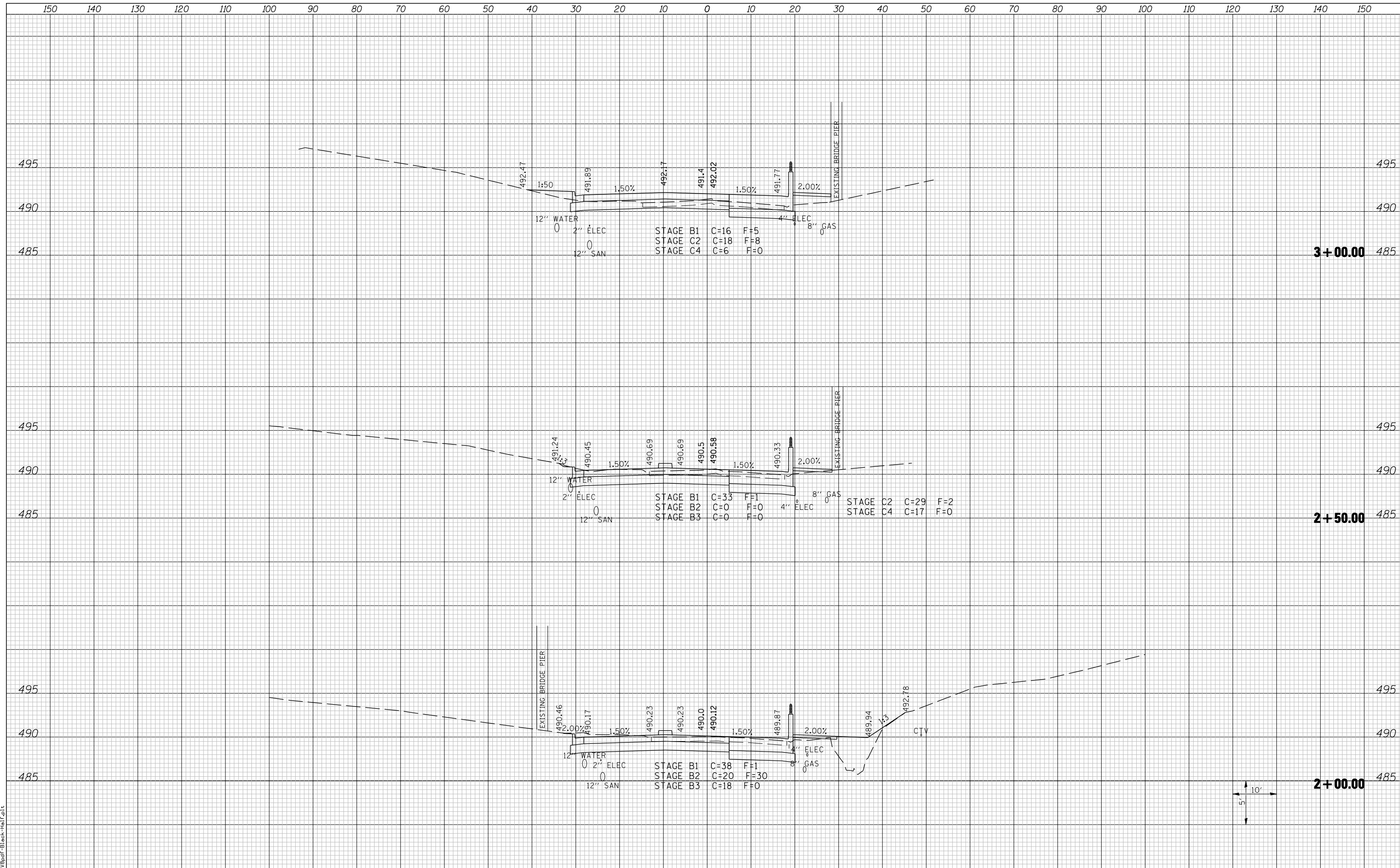


DATE	
BY	
SURVEYED	
PLOTTED	
TEMPLATE	
AREAS	
CHECKED	
FINL	
SURVEY	
NOTE BOOK	
NO.	

DATE	
BY	
SURVEYED	
PLOTTED	
TEMPLATE	
AREAS	
CHECKED	
ORIGINAL	
SURVEY	
NOTE BOOK	
NO.	



LAST SAVED = 3/20/2012
 PEN TABLE = 10-Half-163
 PLOT DRIVER = P:\3rdp\Black-Half.plt

FILE NAME =	USER NAME = beriechmann	DESIGNED -	REVISED -	STATE OF ILLINOIS DEPARTMENT OF TRANSPORTATION		CROSS SECTIONS FAP 809, FAU 9269 (BETWEEN ROUNDABOUTS)	F.A. RTE.	SECTION	COUNTY	TOTAL SHEETS	SHEET NO.
		DRAWN -	REVISED -				①	135-N	ST. CLAIR	206	171
		CHECKED -	REVISED -				①	F.A.P. RTE 809 / F.A.U. RTE 9251	CONTRACT NO. 76D06		
		PLOT DATE = 3/20/2012 4:13:10 PM	DATE -				REVISED -	/ F.A.U. RTE 9269 ILLINOIS FED. AID PROJECT			