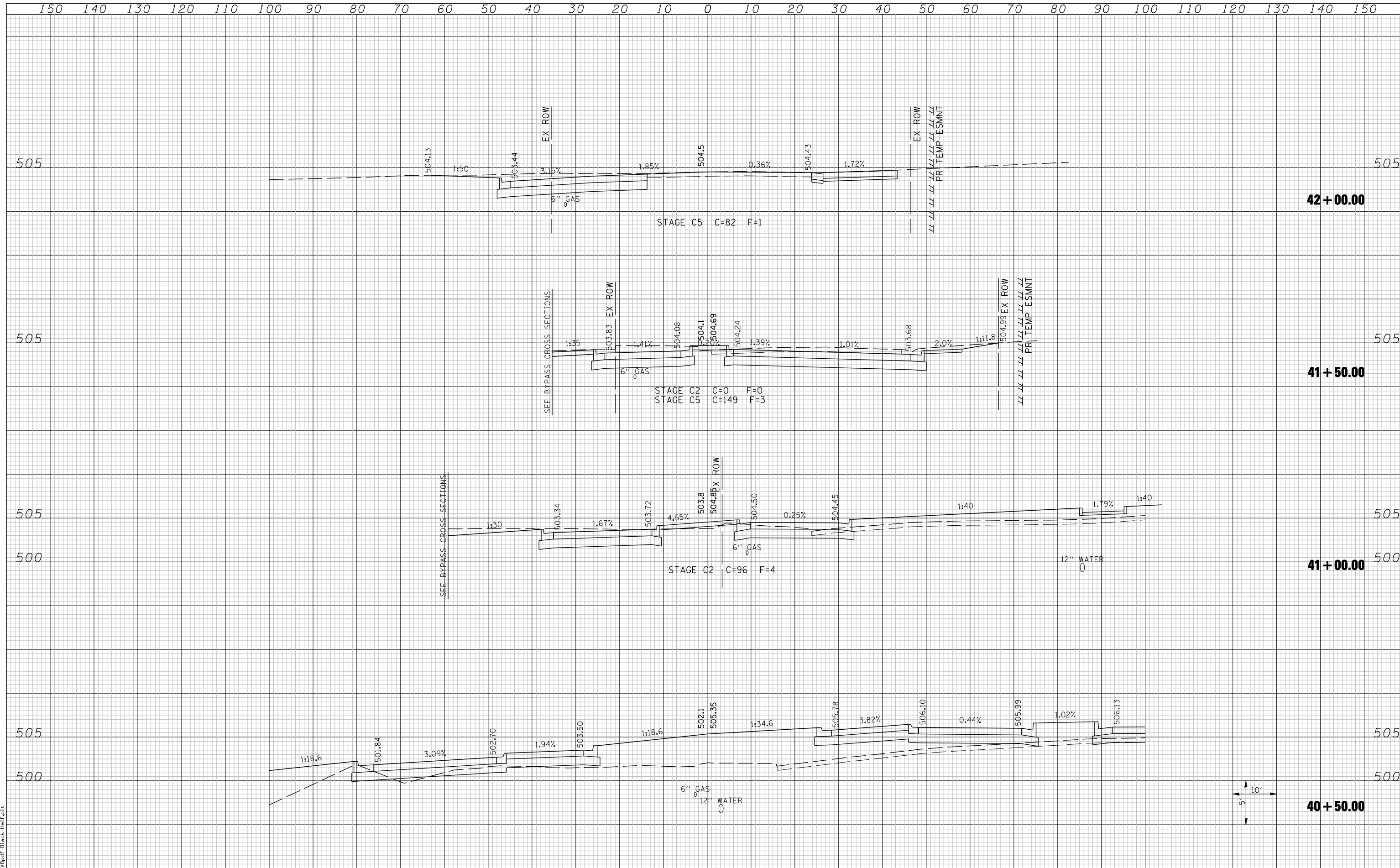


DATE	
BY	
FINAL SURVEY	
NOTE BOOK	
NO.	
SURVEYED	
PLOTTED	
TEMPLATE	
AREAS	
CHECKED	

DATE	
BY	
ORIGINAL SURVEY	
NOTE BOOK	
NO.	
SURVEYED	
PLOTTED	
TEMPLATE	
AREAS	
CHECKED	



LAST SAVED = 3/20/2012  
 PEN TABLE = 10-Half-103  
 PLOT DRIVER = P:\1738pd\FBlack-Half.plt

FILE NAME =	USER NAME = beriechmann	DESIGNED -	REVISED -	<b>STATE OF ILLINOIS</b> <b>DEPARTMENT OF TRANSPORTATION</b>		<b>CROSS SECTIONS</b>		F.A. RTE.	SECTION	COUNTY	TOTAL SHEETS	SHEET NO.
		DRAWN -	REVISED -			①	135-N	ST. CLAIR	206	192		
		CHECKED -	REVISED -			②	F.A.P. RTE 809 / F.A.U. RTE 9251	CONTRACT NO. 76D06				
		PLOT DATE = 3/20/2012 4:13:30 PM	DATE -			REVISED -	/ F.A.U. RTE 9269 ILLINOIS FED. AID PROJECT					