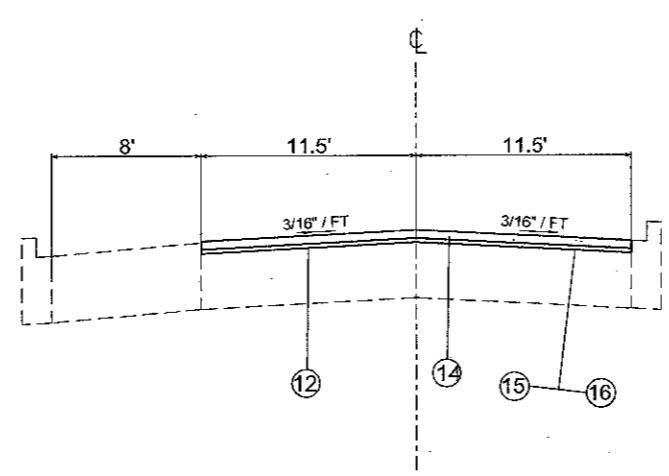
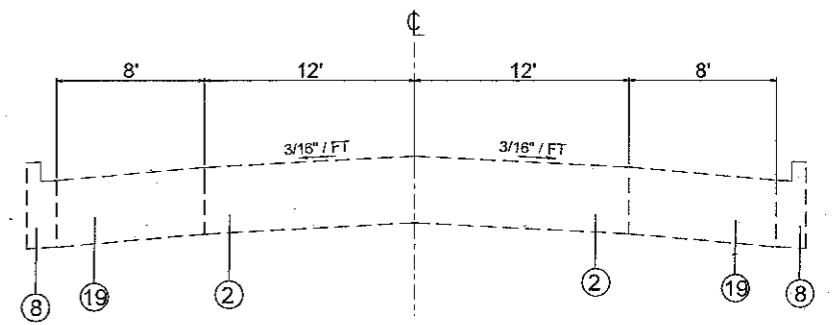


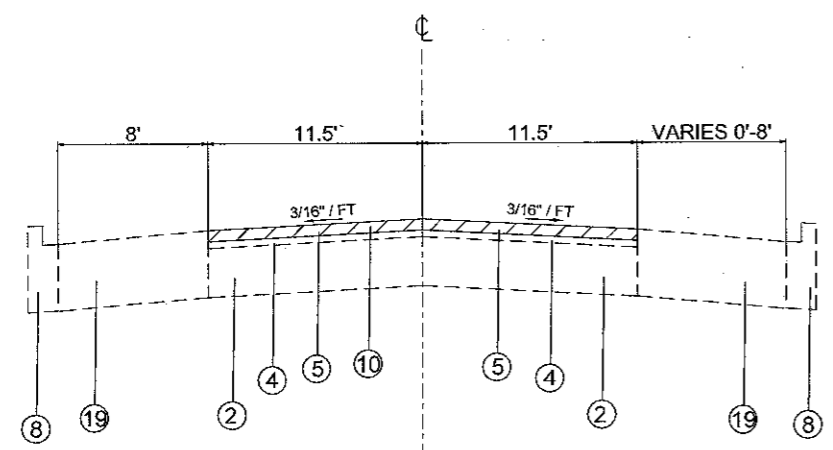
IL 150 (STATE ST.) EXISTING TANGENT SECTION
STA. 589+79 TO STA. 607+83



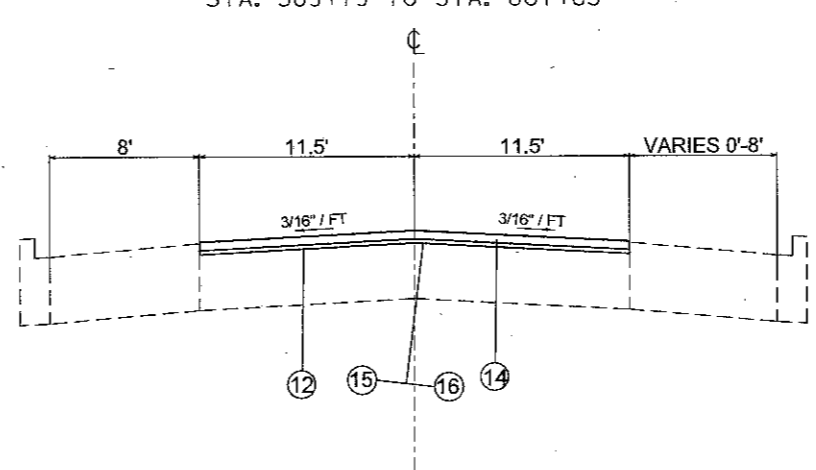
IL 150 (STATE ST.) PROPOSED TANGENT SECTION
STA. 589+79 TO STA. 607+83



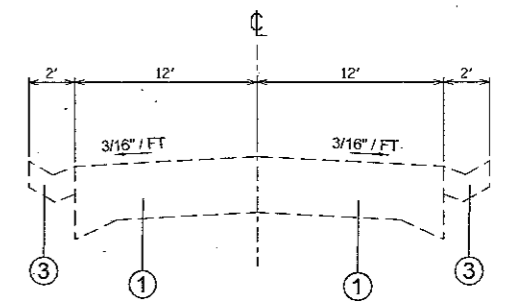
IL 150 (TAYLOR ST.)
EXISTING TANGENT SECTION
STA. 17+69.2 TO STA. 20+59.2



IL 150 (STATE ST.) EXISTING TANGENT SECTION
STA. 588+83 TO STA. 589+79



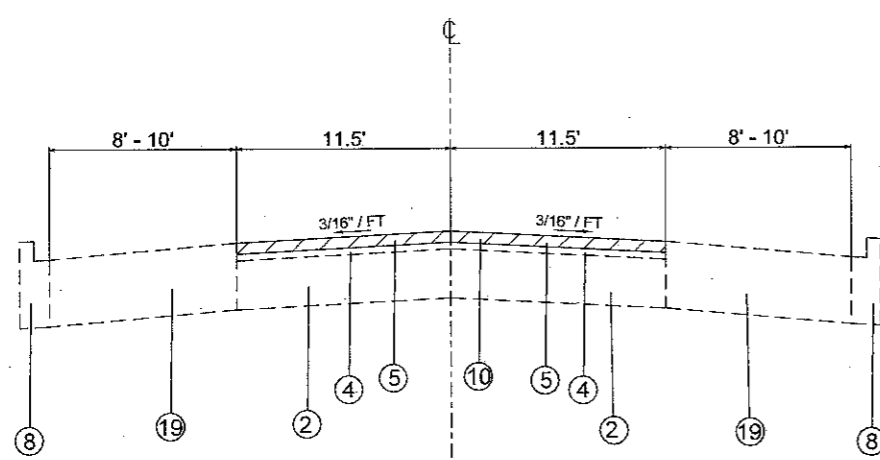
IL 150 (STATE ST.) PROPOSED TANGENT SECTION
STA. 588+83 TO STA. 589+79



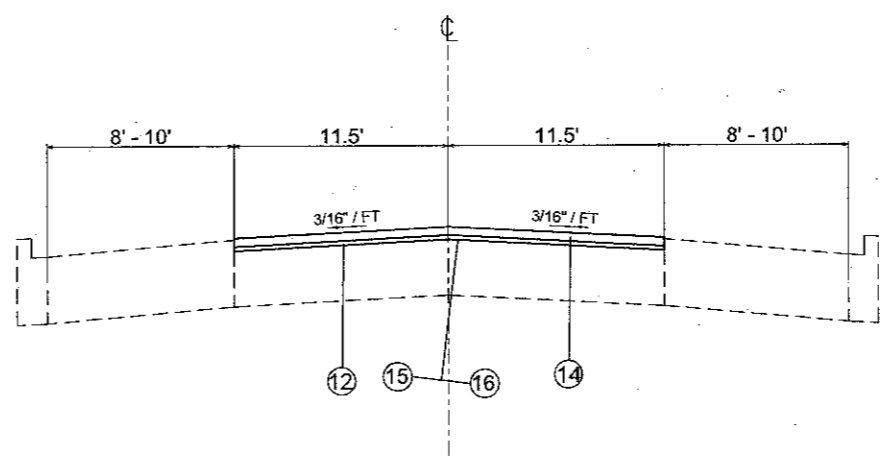
IL 150 (TAYLOR ST.)
EXISTING TANGENT SECTION
STA. 0+00 TO STA. 17+69.2

LEGEND

- 1 EXISTING PCC PAVEMENT (9"-6"-9")
- 2 EXISTING PCC PAVEMENT
- 3 EXISTING CONCRETE GUTTER, TYPE B
- 4 EXISTING HMA LEVEL BINDER
- 5 EXISTING HMA SURFACE
- 6 EXISTING P.C.C. BASE COURSE WIDENING, 9"
- 7 EXISTING P.C.C. BASE COURSE WIDENING, 8"
- 8 EXISTING CURB
- 9 PROPOSED HMA SURFACE REMOVAL, 1 3/4"
- 10 PROPOSED HMA SURFACE REMOVAL, 2"
- 11 PROPOSED HMA SURFACE REMOVAL, VARIABLE DEPTH
- 12 PROPOSED LEVEL BINDER (MACHINE METHOD), N90, 3/4"
- 13 PROPOSED LEVEL BINDER (MACHINE METHOD), N90, 1"
- 14 PROPOSED POLYMERIZED HMA SURFACE COURSE, MIX "D", N90, 1 1/2"
- 15 PROPOSED BITUMINOUS MATERIALS (PRIME COAT)
- 16 PROPOSED AGGREGATE (PRIME COAT)
- 17 PROPOSED AGGREGATE WEDGE SHOULDER, TYPE B
- 18 PROPOSED PREFORMED PLASTIC PAVEMENT MARKING - LINE 4"
- 19 EXISTING PARKING LANES



IL 150 (STATE ST.) EXISTING TANGENT SECTION
STA. 578+37 TO STA. 588+83
STA. 607+83 TO STA. 613+53



IL 150 (STATE ST.) PROPOSED TANGENT SECTION
STA. 578+37 TO STA. 588+83
STA. 607+83 TO STA. 613+53