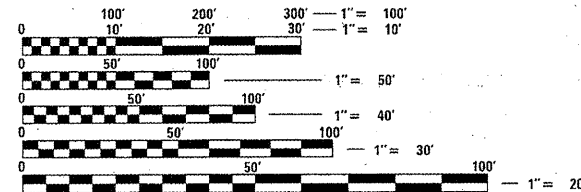


INDEX OF SHEETS

- 1 COVER SHEET
- 2 GENERAL NOTES
- 3-58 SUMMARY OF QUANTITIES
- 6 LOCATION MAP
- 7-11 TYPICAL SECTIONS
- 12-14 SCHEDULE OF QUANTITIES
- 15-25 PLAN DIAGRAMS
- 26-37 DETAILS

STANDARDS

- 000001-06 630001-10
- 280001-06 635006-03
- 353001-04 635011-02
- 420001-07 701201-04
- 420701-02 701301-04
- 442101-07 701306-03
- 442201-03 701311-03
- 482011-03 701501-06
- 602306-03 701901-02
- 602601-02 780001-03
- 604101-01 781001-03



FULL SIZE PLANS HAVE BEEN PREPARED USING STANDARD ENGINEERING SCALES. REDUCED SIZED PLANS WILL NOT CONFORM TO STANDARD SCALES. IN MAKING MEASUREMENTS ON REDUCED PLANS, THE ABOVE SCALES MAY BE USED.

J.U.L.I.E.  
JOINT UTILITY LOCATION INFORMATION FOR EXCAVATION  
1-800-892-0123  
OR 811

PROJECT ENGINEER TIM PADGETT (618)346-3325  
PROJECT MANAGERS AARON KARLAS (618)346-3280

CONTRACT NO. 76E90

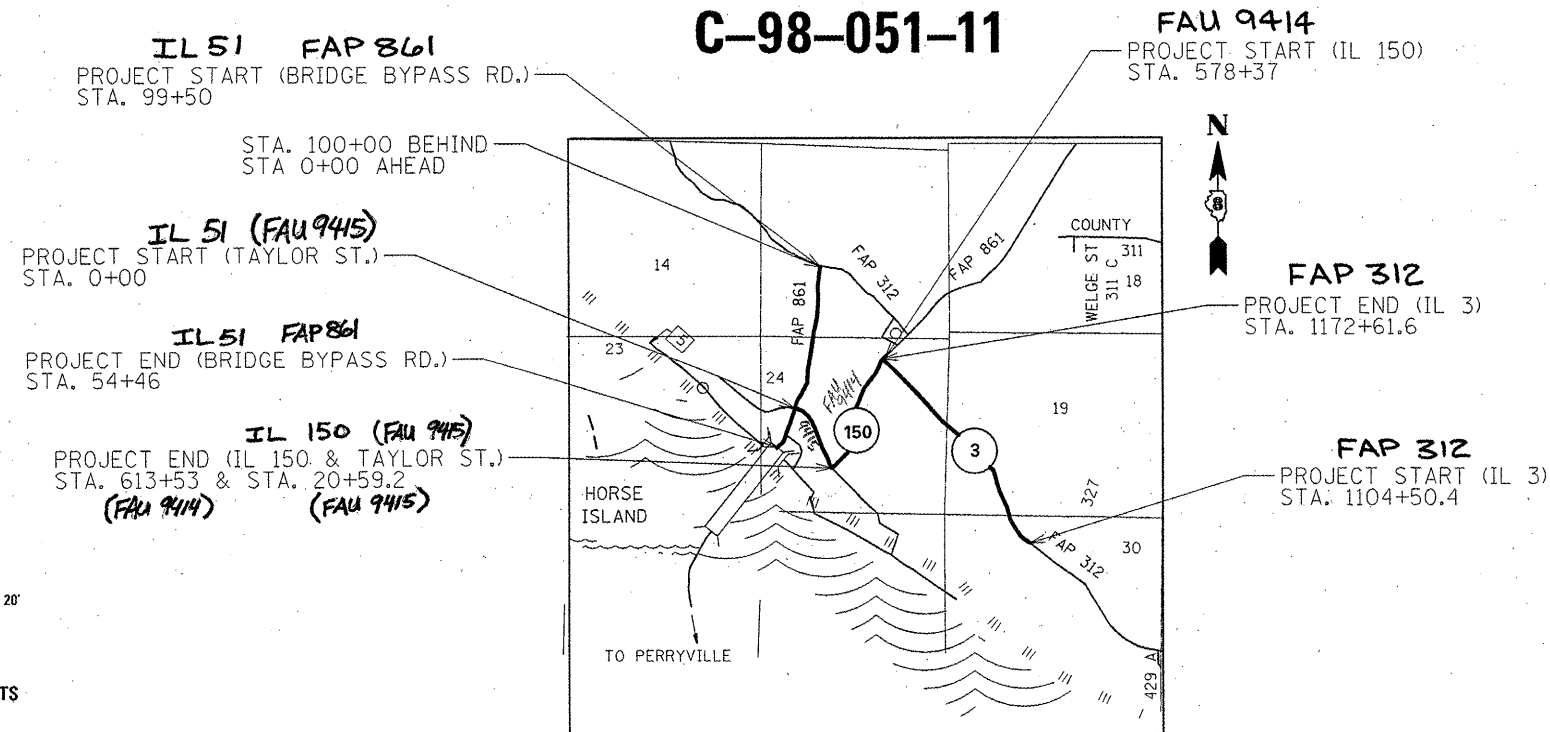
STATE OF ILLINOIS  
DEPARTMENT OF TRANSPORTATION  
DIVISION OF HIGHWAYS

PROPOSED  
HIGHWAY PLANS

VARIOUS ROUTES  
SECTION (119, 119-1)RS-2, 75-1 RS-2  
PROJECT ACF-ACM-000S (893)

3P RESURFACING - IL 3 FROM IL3/IL150 W JCT TO RIVERVIEW BLVD.  
IL 150 FROM MISSISSIPPI RIVER TO IL3/IL150 W JCT.

RANDOLPH COUNTY  
C-98-051-11



SCALE  
1" = 1 MILE

GROSS LENGTH = 17,832.4 FT. = 3.377 MILE  
NET LENGTH = 17,832.4 FT. = 3.377 MILE

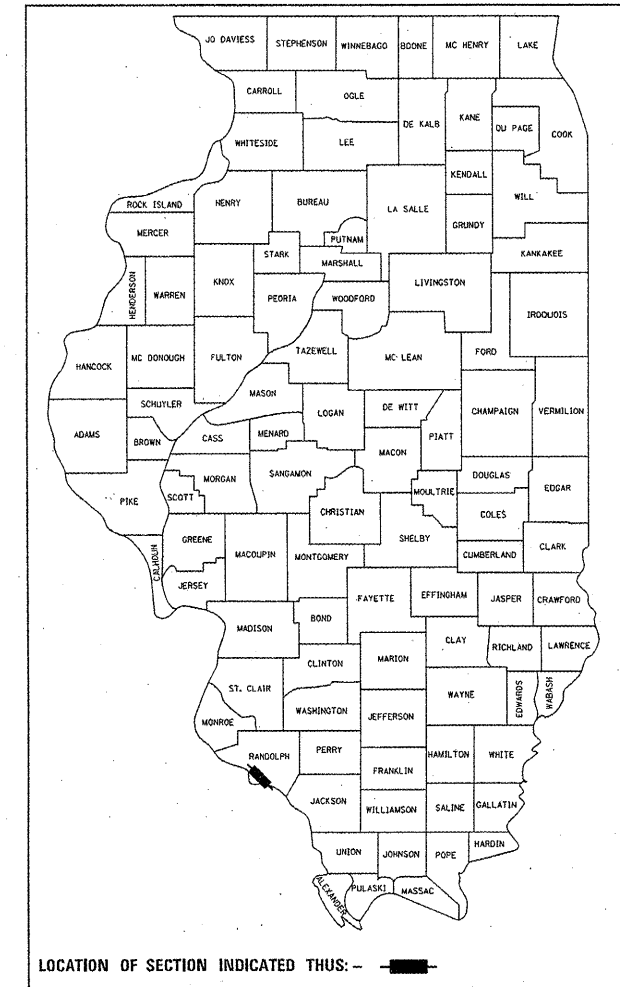
FUNCTIONAL CLASSIFICATION:  
OTHER PRINCIPAL ARTERIAL

F.A.P. RTE.	SECTION	COUNTY	TOTAL SHEETS	SHEET NO.
•	(119, 119-1)RS-2, (75-1)RS-2	RANDOLPH	37	1
	ILLINOIS		CONTRACT NO. 76E90	

\*FAP 312/FAP 861/FAU 9414/FAU 9415

\*\* 37+2=39

D-98-050-11



STATE OF ILLINOIS  
DEPARTMENT OF TRANSPORTATION  
DIVISION OF HIGHWAYS

SUBMITTED March 23, 2012

*John D. Baumanelli*  
DEPUTY DIRECTOR OF HIGHWAYS, REGION ENGINEER

May 11, 2012  
*John D. Baumanelli P.E.*  
ACTING ENGINEER OF DESIGN AND ENVIRONMENT

May 11, 2012  
*William R. Freyer*  
ACTING DIRECTOR OF HIGHWAYS, CHIEF ENGINEER

PRINTED BY THE AUTHORITY  
OF THE STATE OF ILLINOIS