

06-15-12 LETTING ITEM 136

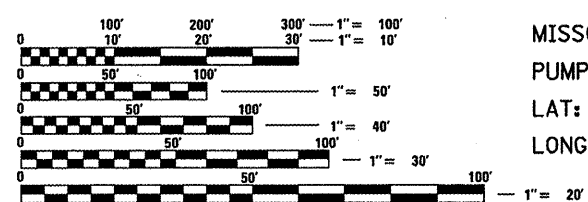
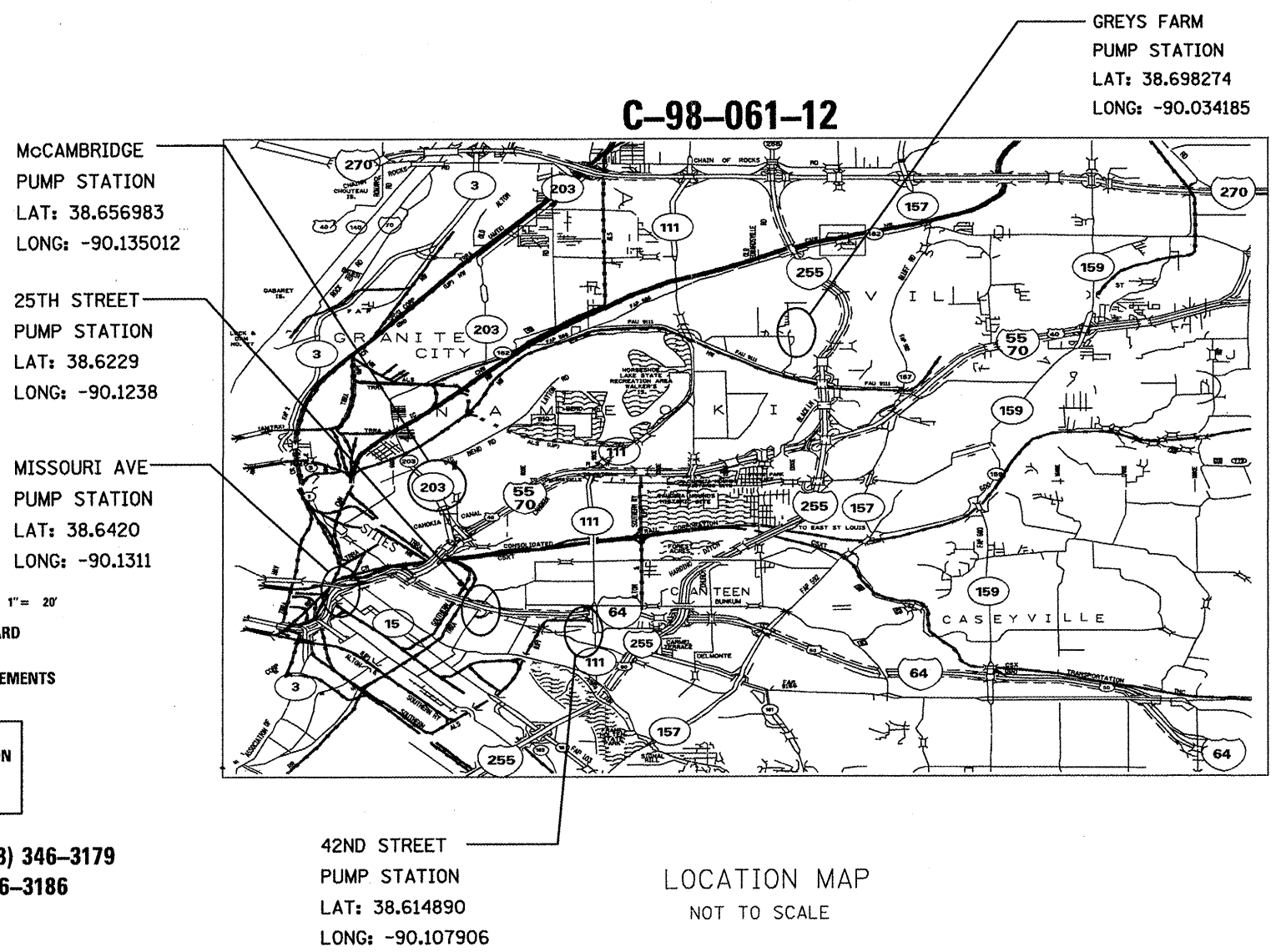
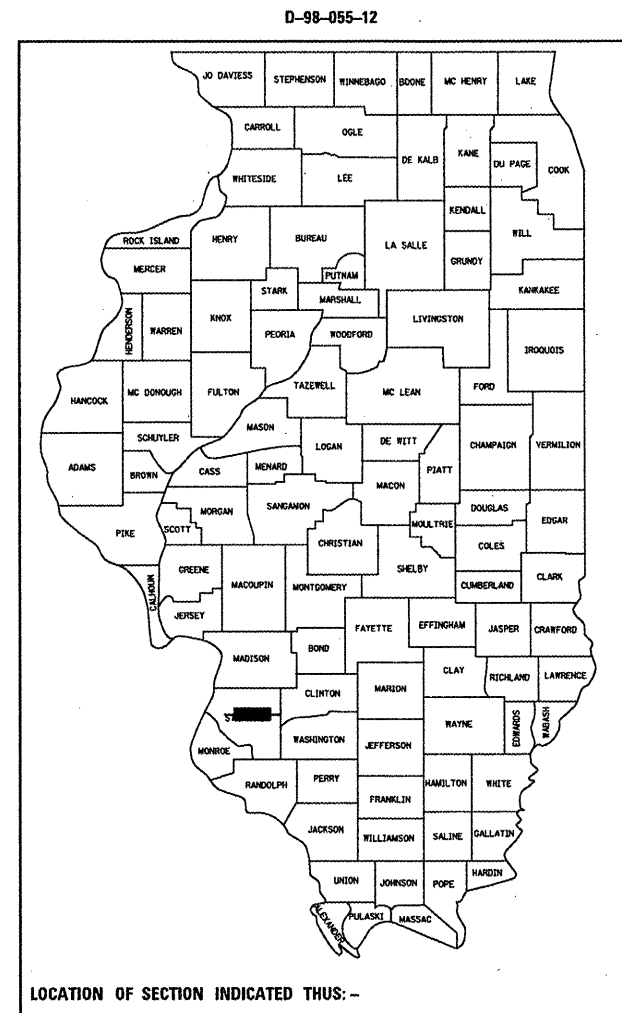
STATE OF ILLINOIS
DEPARTMENT OF TRANSPORTATION
DIVISION OF HIGHWAYS
**PROPOSED
HIGHWAY PLANS**
VARIOUS ROUTES
D-8 PUMP STATIONS 2012-1
ST. CLAIR / MADISON COUNTY
PUMP STATION SUMP CLEANING
& ROOF REPLACEMENT

F.A. RTE.	SECTION	COUNTY	TOTAL SHEETS	SHEET NO.
VAR	DISTRICT 8 2013-1	* ILLINOIS	9	1
			CONTRACT NO. 76F68	

* ST. CLAIR/MADISON

INDEX OF SHEETS

- 1 COVER SHEET
- 2 SCHEDULE OF QUANTITIES & HIGHWAY STANDARDS
- 3 LOCATION NO. 1 SITE PLAN MISSOURI AVE. PUMP (ROOF REPLACEMENT)
- 4 LOCATION NO. 1 DETAILS MISSOURI AVE. PUMP (SUMP CLEANING)
- 5 LOCATIONS NO. 2 SITE PLAN 25th STREET PUMP
- 6 LOCATION NO. 2 DETAILS 25th STREET PUMP (SUMP CLEANING)
- 7 LOCATION NO. 3 SITE PLAN 42nd STREET PUMP (ROOF REPLACEMENT)
- 8 LOCATION NO. 4 SITE PLAN McCAMBRIDGE PUMP (ROOF REPLACEMENT)
- 9 LOCATION NO. 5 SITE PLAN GRAYS FARM (ROOF REPLACEMENT)



FULL SIZE PLANS HAVE BEEN PREPARED USING STANDARD ENGINEERING SCALES. REDUCED SIZED PLANS WILL NOT CONFORM TO STANDARD SCALES. IN MAKING MEASUREMENTS ON REDUCED PLANS, THE ABOVE SCALES MAY BE USED.

J.U.L.I.E.
JOINT UTILITY LOCATION INFORMATION FOR EXCAVATION
1-800-892-0123
OR 811

PROJECT ENGINEER: PATTI LeBEAU (618) 346-3179
SQUAD LEADER: BILLIE OWEN (618) 346-3186

CONTRACT NO. 76F68

STATE OF ILLINOIS
DEPARTMENT OF TRANSPORTATION
DIVISION OF HIGHWAYS

SUBMITTED *March 23 20 12*

John D. Baranelli
DEPUTY DIRECTOR OF HIGHWAYS, REGION 5 ENGINEER

John D. Baranelli
acting ENGINEER OF DESIGN AND ENVIRONMENT

William R. Peja
acting DIRECTOR OF HIGHWAYS, CHIEF ENGINEER

**PRINTED BY THE AUTHORITY
OF THE STATE OF ILLINOIS**

SUMMARY OF QUANTITIES

SUMMARY OF QUANTITIES			URBAN TOTAL QUANTITIES	100 % STATE CONSTRUCTION TYPE CODE 0040	
CODE NO	ITEM	UNIT		ST.CLAIR COUNTY	MADISON COUNTY
67100100	MOBILIZATION	L SUM	1	.5	.5
X0327401	CLEAN SUMP, LOCATION NO.1	L SUM	1	1	
X0327402	CLEAN SUMP, LOCATION NO.2	L SUM	1	1	
X0327397	ROOF REPLACEMENT, LOCATION NO.1	L SUM	1	1	
X0327398	ROOF REPLACEMENT, LOCATION NO.3	L SUM	1	1	
X0327399	ROOF REPLACEMENT, LOCATION NO.4	L SUM	1		1
X0327400	ROOF REPLACEMENT, LOCATION NO.5	L SUM	1		1

GENERAL NOTES
NONE

LIST OF STANDARDS
 - 701001-02
 - 701006-03
 - 701011-02
 - 701101-02
 - 701106-02

* ST.CLAIR/MADISON

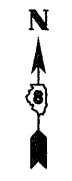
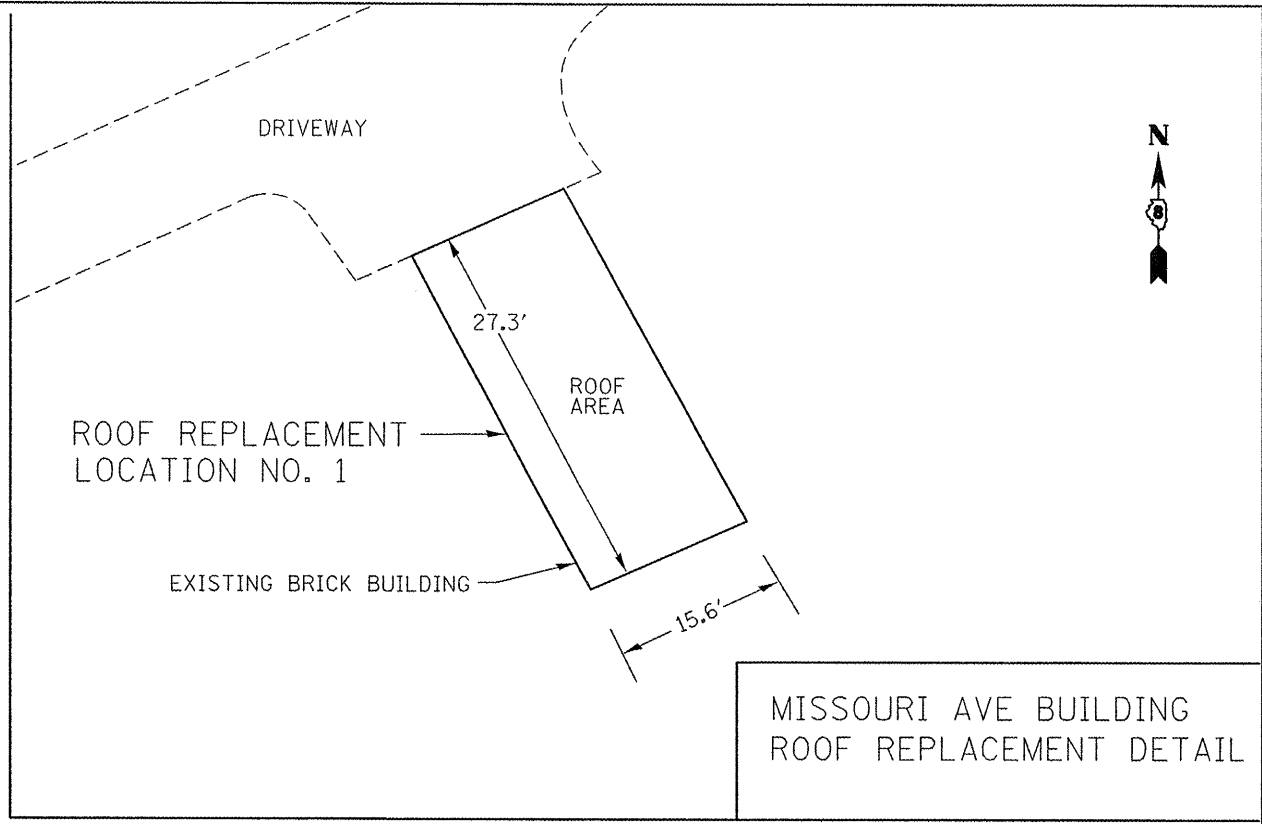
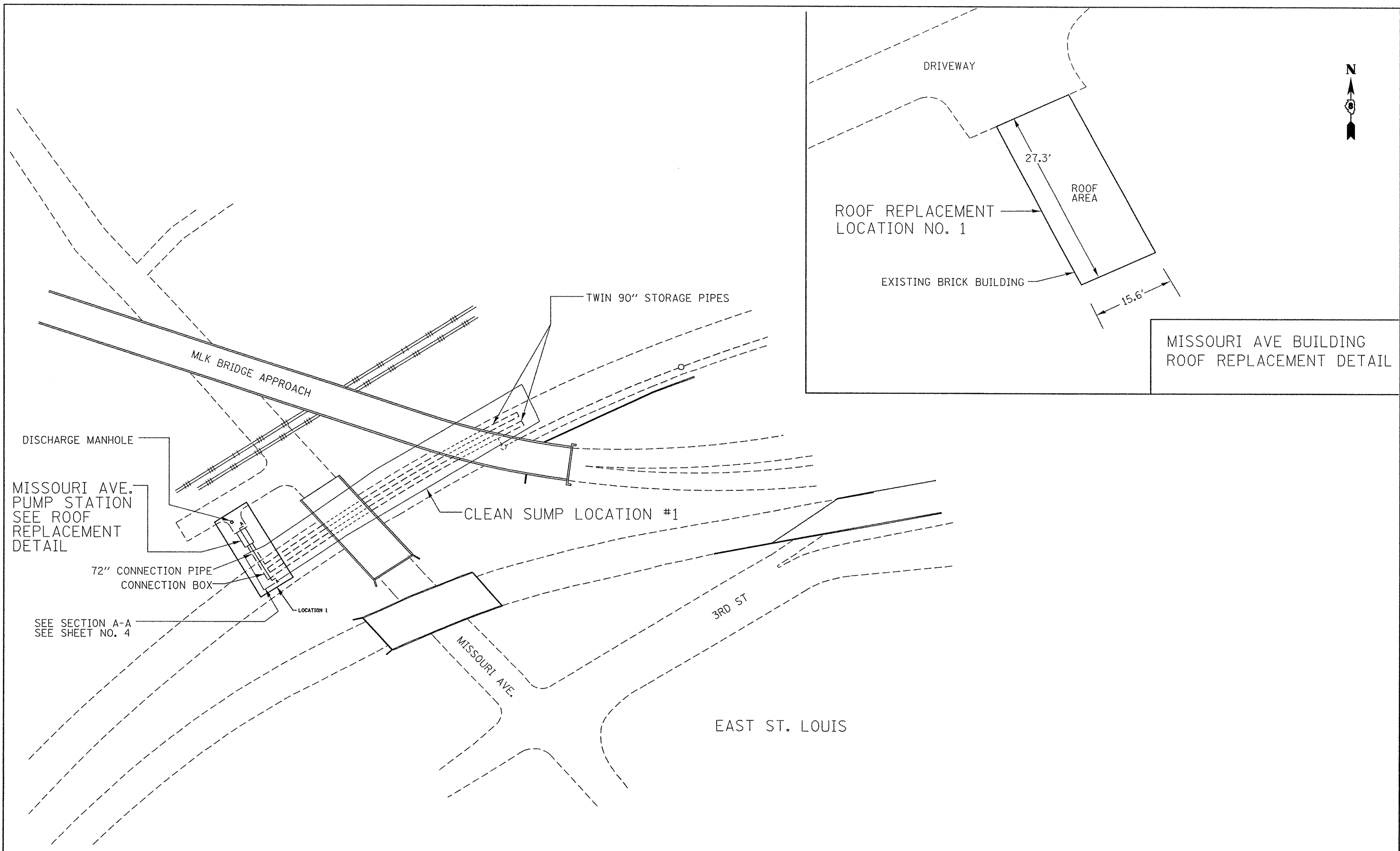
FILE NAME =	USER NAME = r.schardson	DESIGNED -	REVISED -
c:\pwwork\p\dos\rschardson\je\d8293424	d876f68-ah-t-plan.dgn	DRAWN -	REVISED -
	PLOT SCALE = 100.0000' / in.	CHECKED -	REVISED -
	PLOT DATE = 3/19/2012	DATE -	REVISED -

STATE OF ILLINOIS
DEPARTMENT OF TRANSPORTATION

SUMMARY OF QUANTITIES

SCALE: SHEET NO. 2 OF 9 SHEETS STA. TO STA.

F.A. RTE.	SECTION	COUNTY	TOTAL SHEETS	SHEET NO.
VAR	DISTRICT 8 2013-1	*	9	2
FED. ROAD DIST. NO.			CONTRACT NO. 76F68	
ILLINOIS FED. AID PROJECT				



MISSOURI AVE BUILDING
ROOF REPLACEMENT DETAIL

* ST. CLAIR/MADISON

FILE NAME =	USER NAME = richardsonje	DESIGNED -	REVISED -
ca:\pw_work\pwidot\richardsonje\d0293424	d076f68-shr-plan.dgn	DRAWN -	REVISED -
	PLOT SCALE = 100.0000' / in.	CHECKED -	REVISED -
	PLOT DATE = 3/19/2012	DATE -	REVISED -

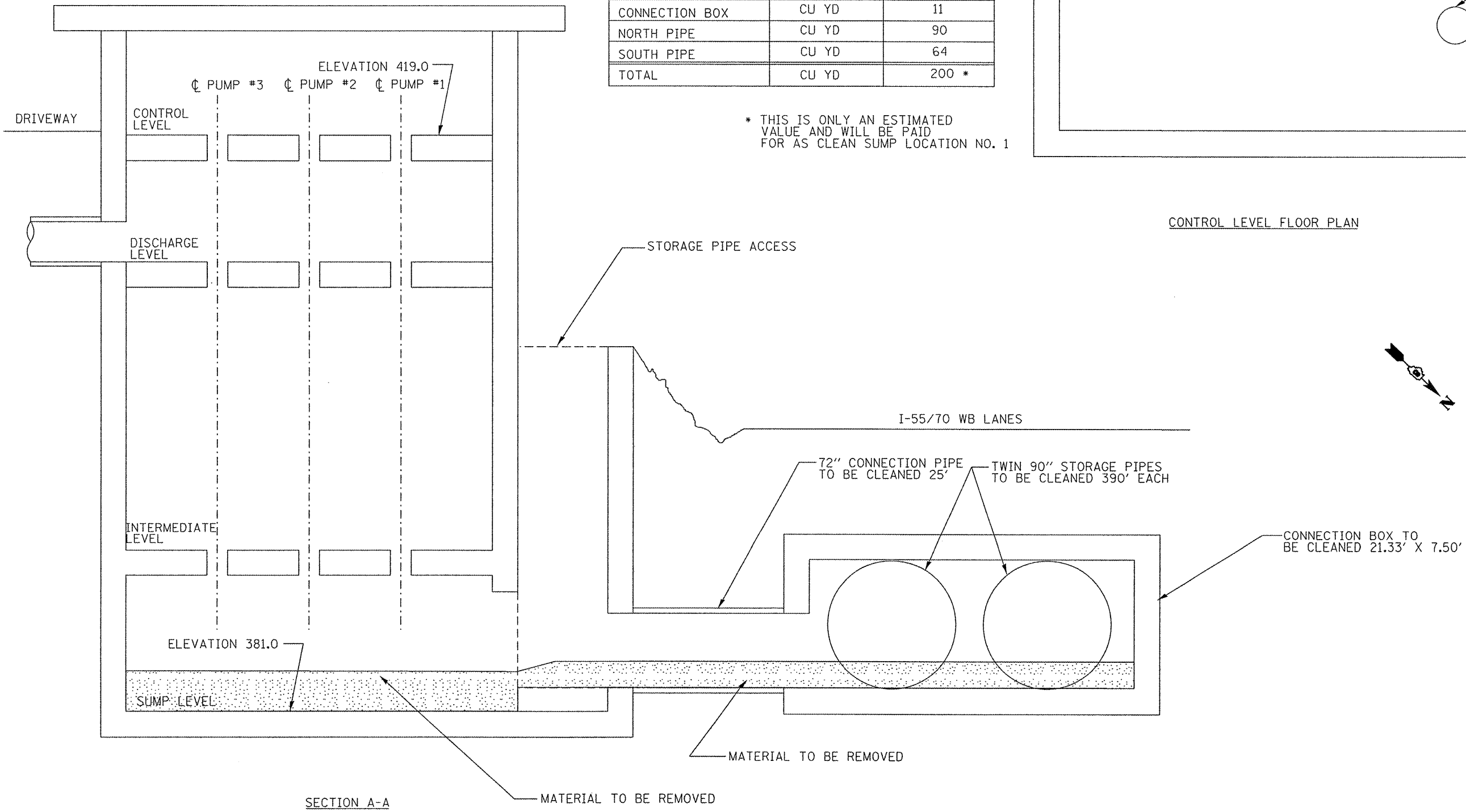
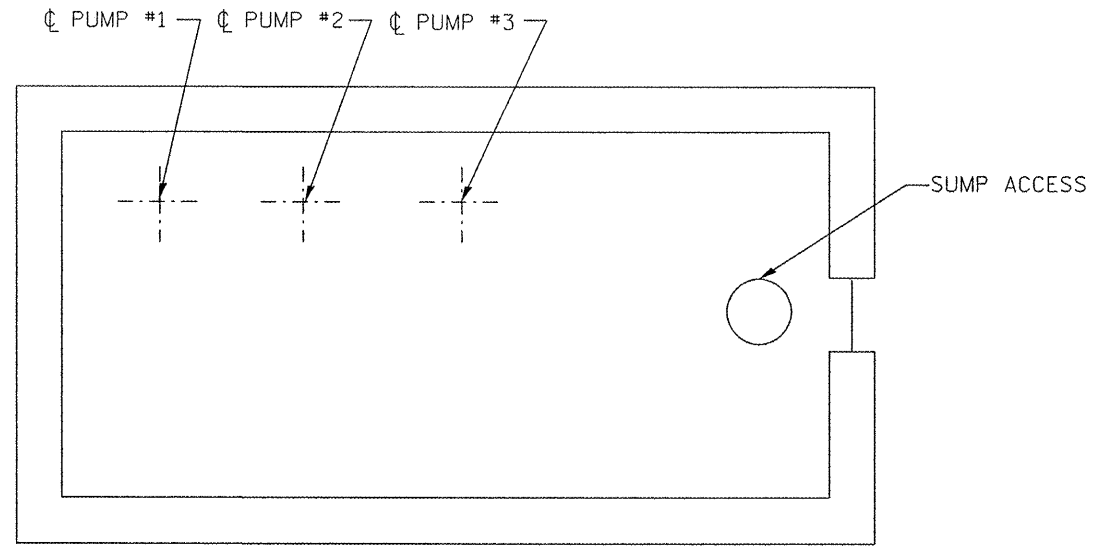
**STATE OF ILLINOIS
DEPARTMENT OF TRANSPORTATION**

LOCATION #1			
IDOT MISSOURI AVE PUMP STATION			
#200 MISSOURI AVE, EAST ST. LOUIS, IL			
SCALE:	SHEET NO.	OF SHEETS	STA. TO STA.

F.A. RTE.	SECTION	COUNTY	TOTAL SHEETS	SHEET NO.
VAR	DISTRICT 8 2013-1	*	9	3
FED. ROAD DIST. NO.			ILLINOIS FED. AID PROJECT	
			CONTRACT NO. 76F68	

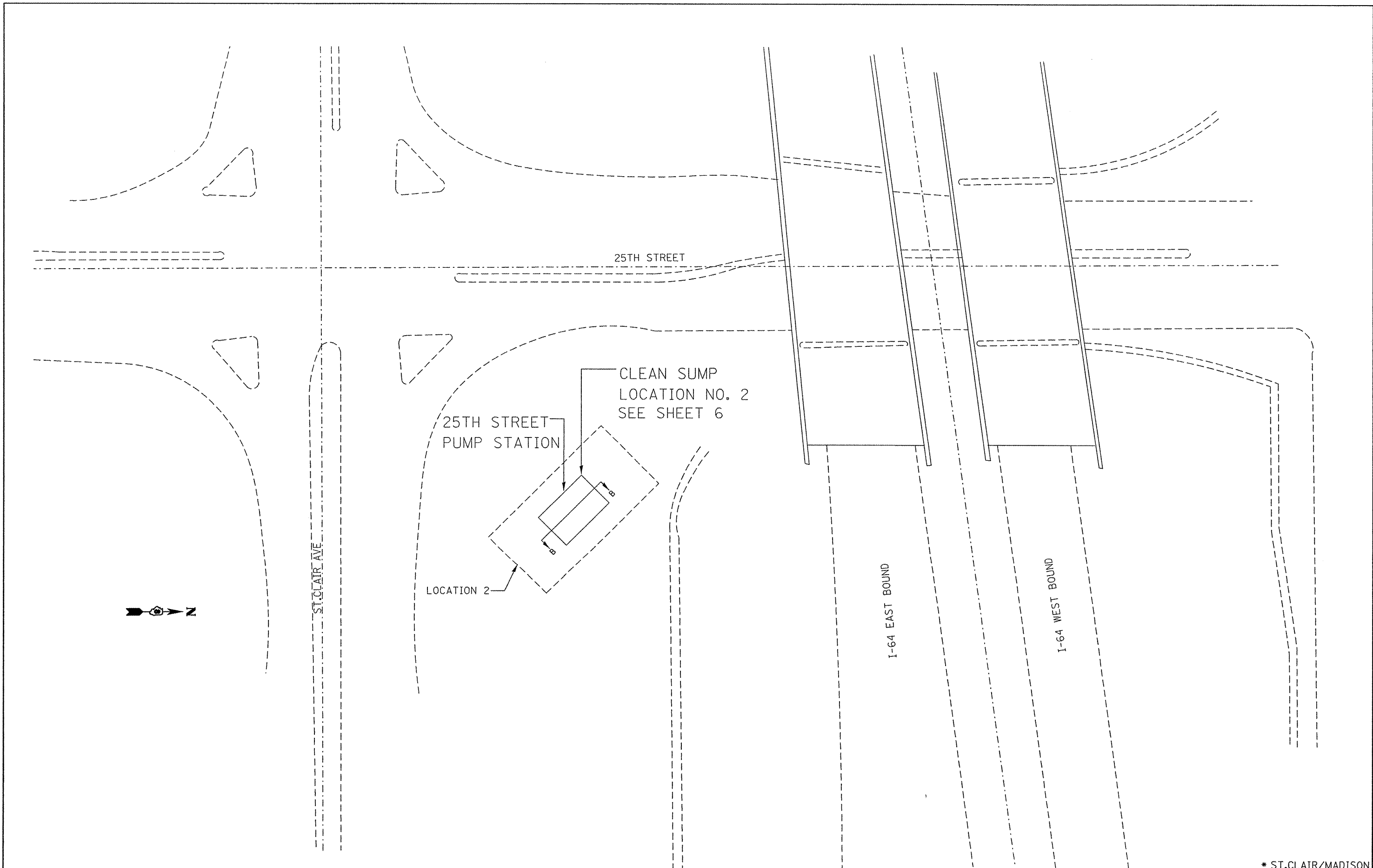
ESTIMATED VOLUME TO BE REMOVED		
LOCATION	UNIT	QUANTITY
SUMP AREA	CU YD	23
TRASH PIT	CU YD	6
CONNECTION PIPE	CU YD	6
CONNECTION BOX	CU YD	11
NORTH PIPE	CU YD	90
SOUTH PIPE	CU YD	64
TOTAL	CU YD	200 *

* THIS IS ONLY AN ESTIMATED VALUE AND WILL BE PAID FOR AS CLEAN SUMP LOCATION NO. 1



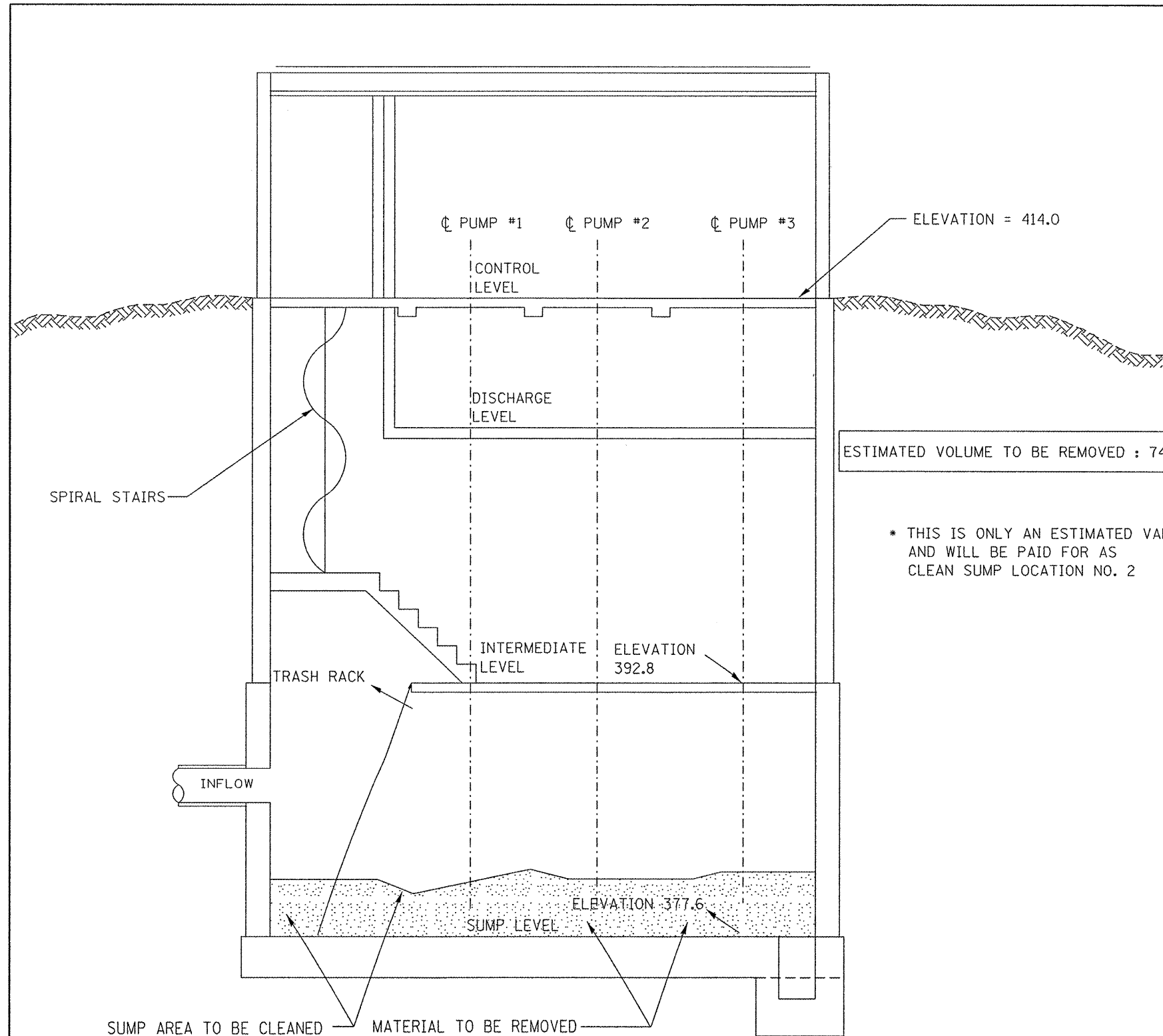
* ST. CLAIR/MADISON

FILE NAME =	USER NAME = r1schardsonje	DESIGNED -	REVISED -	STATE OF ILLINOIS DEPARTMENT OF TRANSPORTATION	F.A. RTE.	SECTION	COUNTY	TOTAL SHEETS	SHEET NO.
en:\pwork\puidot\rschardsonje\d8293424	d8293424	DRAWN -	REVISED -		VAR	DISTRICT 8 2013-1	*	9	4
	PLOT SCALE = 1/8" = 1'-0"	CHECKED -	REVISED -		SCALE:	CONTRACT NO. 76F68			
	PLOT DATE = 3/19/2012	DATE -	REVISED -		SHEET NO. OF SHEETS STA. TO STA.	ILLINOIS FED. AID PROJECT			



* ST. CLAIR/MADISON

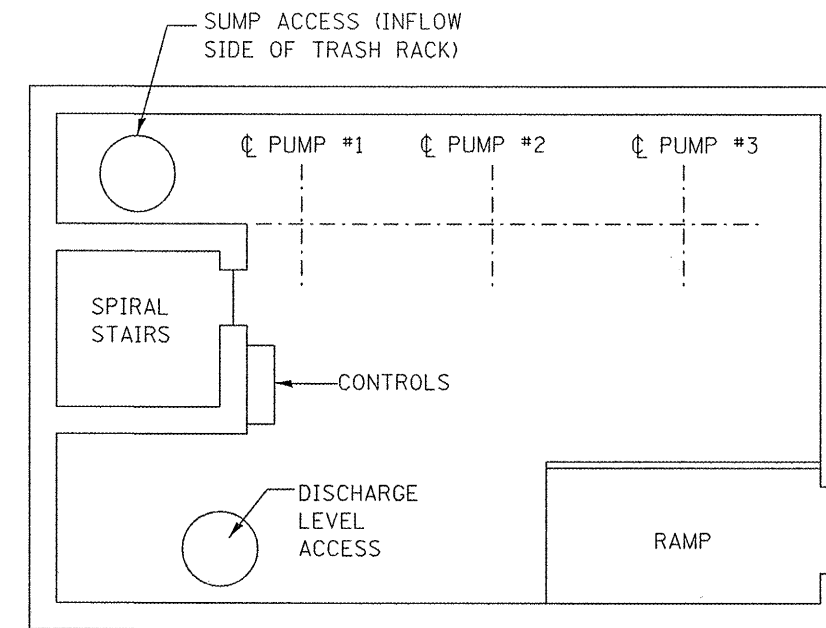
FILE NAME =	USER NAME = rrichardsonje	DESIGNED -	REVISED -	STATE OF ILLINOIS DEPARTMENT OF TRANSPORTATION	LOCATION #2 IDOT 25th STREET PUMP STATION EAST, ST. LOUIS, IL			F.A. RTE.	SECTION	COUNTY	TOTAL SHEETS	SHEET NO.			
ct:\pw\work\puidot\rrichardsonje\d0293424	d876f68-sht-plan.dgn	DRAWN -	REVISED -		SCALE:	SHEET NO.	OF	SHEETS	STA.	TO STA.	VAR	DISTRICT 8 2013-1	*	9	5
	PLOT SCALE = 100.0000' / 1"	CHECKED -	REVISED -		CONTRACT NO. 76F68										
	PLOT DATE = 3/19/2012	DATE -	REVISED -		FED. ROAD DIST. NO. ILLINOIS FED. AID PROJECT										



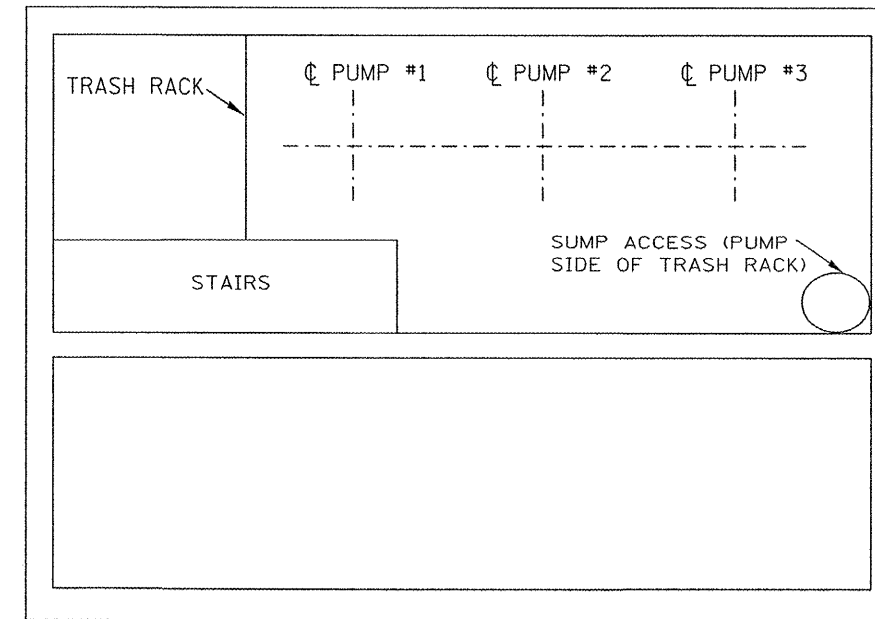
SECTION B-B

ESTIMATED VOLUME TO BE REMOVED : 74 CU. YARDS *

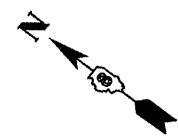
* THIS IS ONLY AN ESTIMATED VALUE AND WILL BE PAID FOR AS CLEAN SUMP LOCATION NO. 2



CONTROL LEVEL FLOOR PLAN



INTERMEDIATE LEVEL FLOOR PLAN



* ST. CLAIR/MADISON

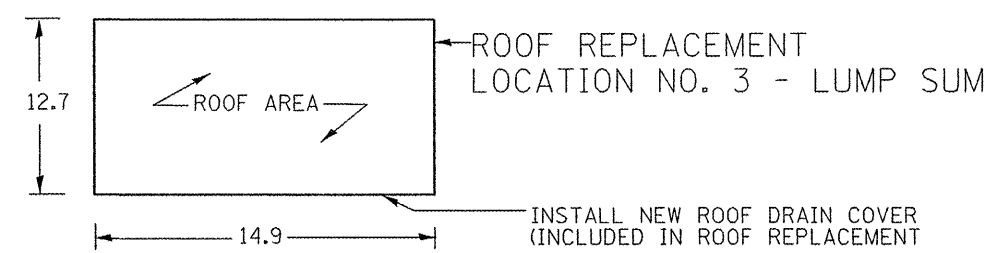
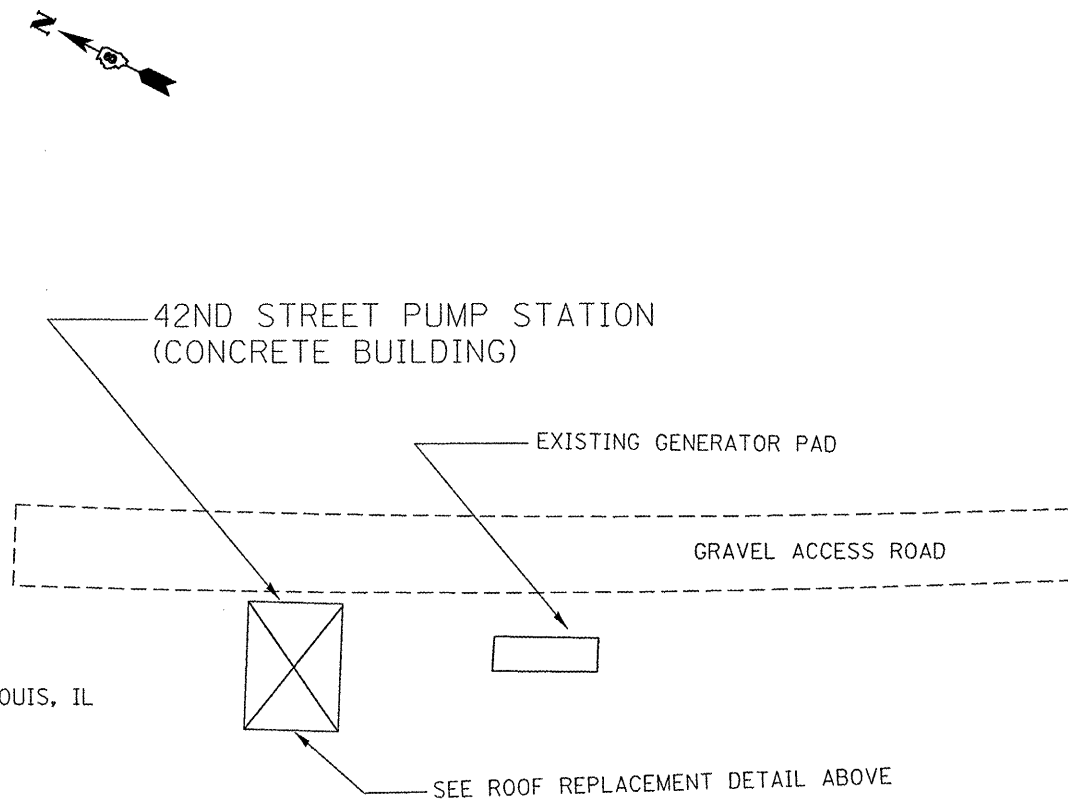
FILE NAME =	USER NAME = rshardsonje	DESIGNED -	REVISED -
o:\p\work\p\sdot\rs\shardsonje\d0293424	d0276f68-shr-plan.dgn	DRAWN -	REVISED -
	PLOT SCALE = 1/8" = 1'-0"	CHECKED -	REVISED -
	PLOT DATE = 3/19/2012	DATE -	REVISED -

STATE OF ILLINOIS
DEPARTMENT OF TRANSPORTATION

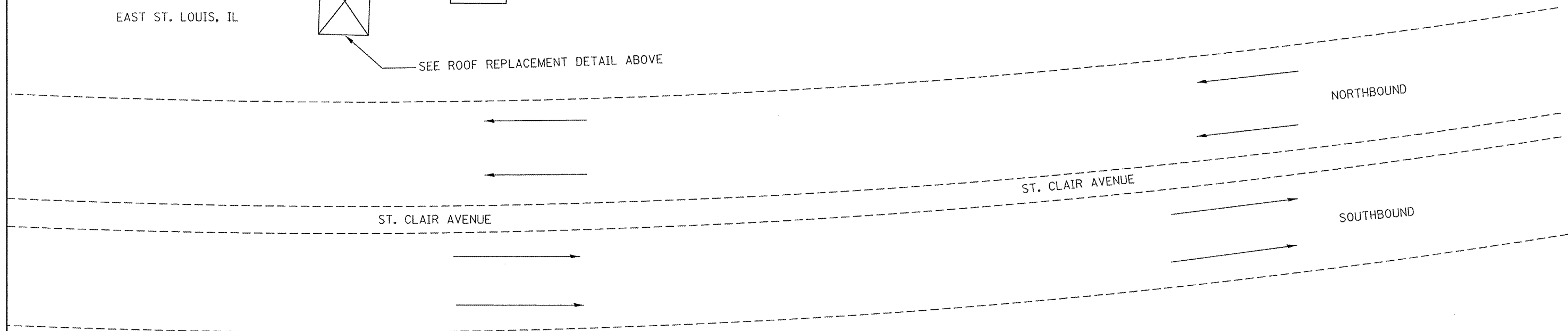
LOCATION #2 DETAILS
IDOT 25th STREET PUMP STATION
EAST ST. LOUIS, IL

SCALE: SHEET NO. OF SHEETS STA. TO STA.

F.A. RTE.	SECTION	COUNTY	TOTAL SHEETS	SHEET NO.
VAR	DISTRICT 8 2013-1	*	9	6
FED. ROAD DIST. NO. ILLINOIS FED. AID PROJECT			CONTRACT NO. 76F68	



ROOF REPLACEMENT DETAIL
42ND STREET PUMP STATION



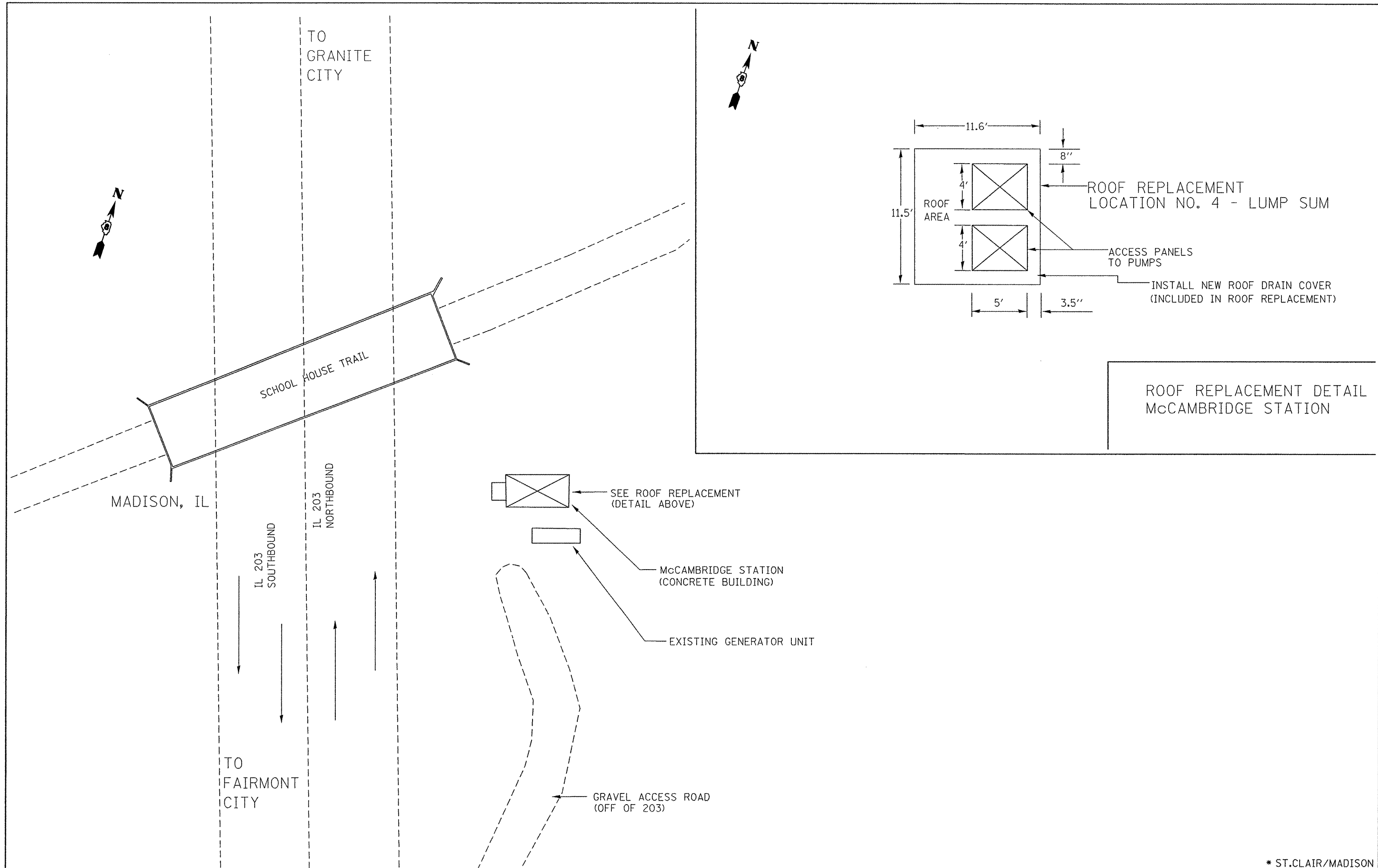
* ST. CLAIR/MADISON

FILE NAME =	USER NAME = richardsonje	DESIGNED -	REVISED -
c:\pwork\pwork\richardsonje\0293424	d876f68-aht-plan.dgn	DRAWN -	REVISED -
PLOT SCALE = 100.0000' / 1in.	CHECKED -	REVISED -	REVISED -
PLOT DATE = 3/19/2012	DATE -	REVISED -	REVISED -

**STATE OF ILLINOIS
DEPARTMENT OF TRANSPORTATION**

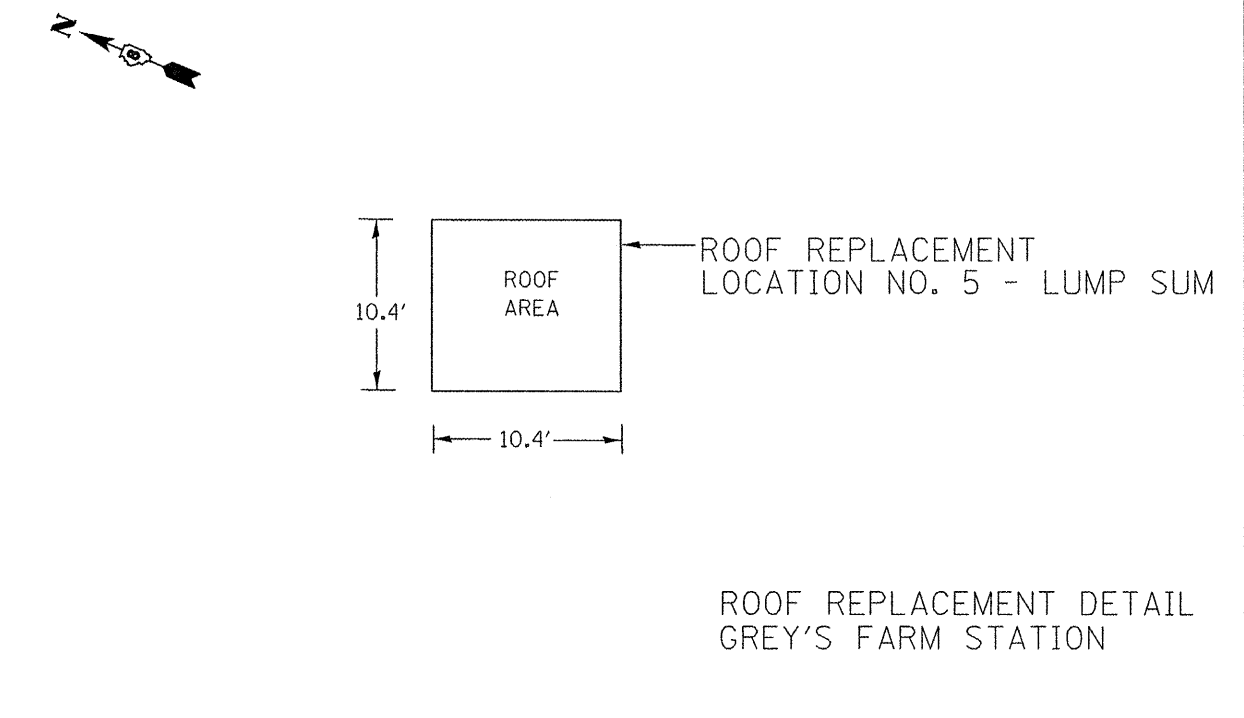
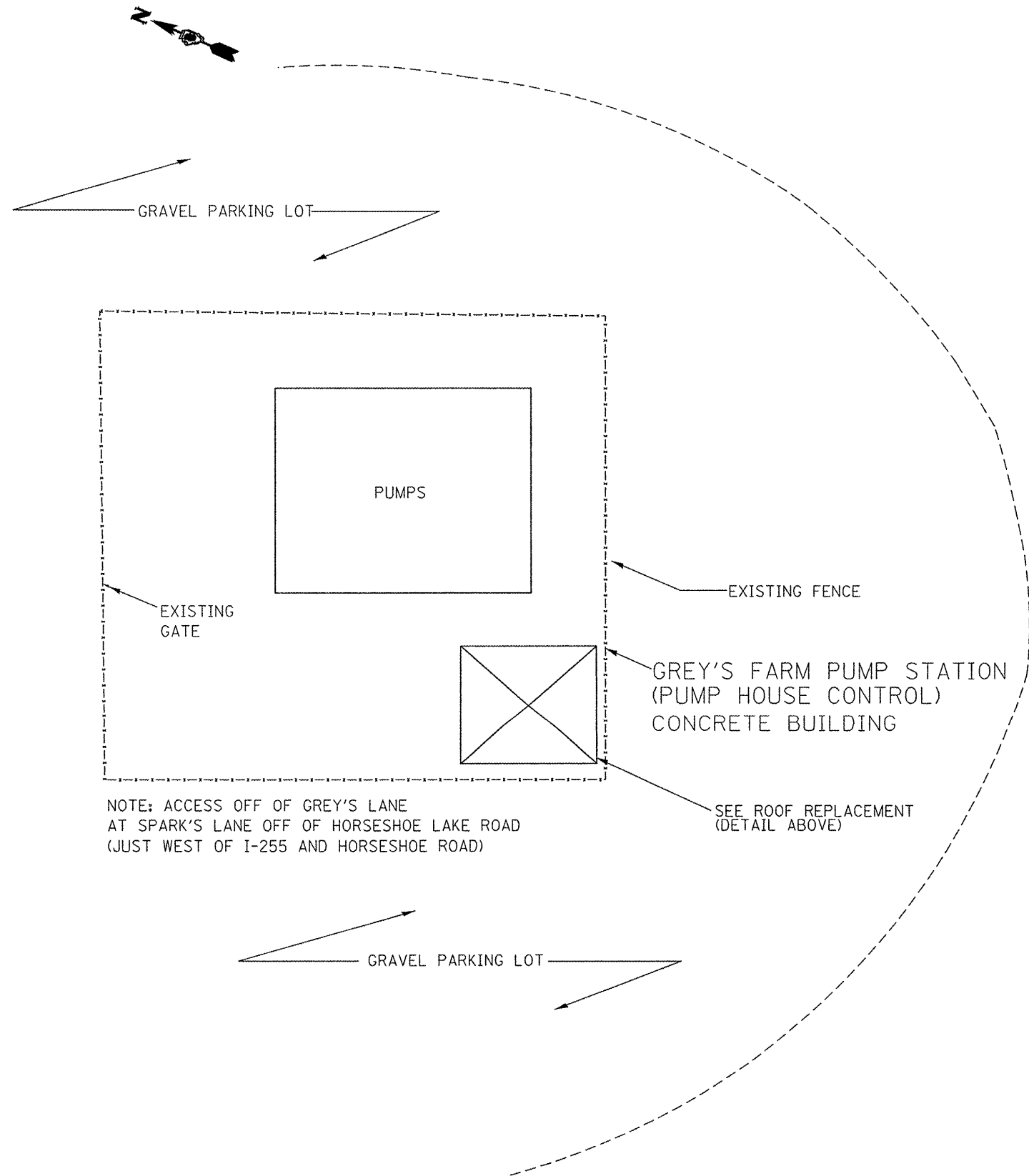
LOCATION #3			
IDOT 42nd STREET 4301 PUMP STATION			
EAST ST. LOUIS, IL			
SCALE:	SHEET NO.	OF SHEETS	STA. TO STA.

F.A. RTE.	SECTION	COUNTY	TOTAL SHEETS	SHEET NO.
VAR	DISTRICT 8 2013-1	*	9	7
FED. ROAD DIST. NO.			ILLINOIS FED. AID PROJECT	
			CONTRACT NO. 76F68	



FILE NAME =	USER NAME = rrichardsonje	DESIGNED -	REVISED -	STATE OF ILLINOIS DEPARTMENT OF TRANSPORTATION	LOCATION #4 IDOT 300 IL. ROUTE 203 PUMP STATION MADISON, IL			F.A. RTE.	SECTION	COUNTY	TOTAL SHEETS	SHEET NO.
es:\pwork\psidot\rrichardsonje\d8293424	db76f68-ahf-plan.dgn	DRAWN -	REVISED -		VAR	DISTRICT 8 2013-1	*	9	8			
	PLOT SCALE = 100,0000' / in.	CHECKED -	REVISED -		SCALE: SHEET NO. OF SHEETS STA. TO STA.			CONTRACT NO. 76F68				
	PLOT DATE = 3/19/2012	DATE -	REVISED -		FED. ROAD DIST. NO. ILLINOIS FED. AID PROJECT							

* ST. CLAIR/MADISON



* ST.CLAIR/MADISON

FILE NAME =	USER NAME = r1charlsonje	DESIGNED -	REVISED -
o:\pw\work\p1dot\1charlsonje\10293424	d876f68-shr-plan.dgn	DRAWN -	REVISED -
	PLOT SCALE = 100.0000' / 1"	CHECKED -	REVISED -
	PLOT DATE = 3/19/2012	DATE -	REVISED -

**STATE OF ILLINOIS
DEPARTMENT OF TRANSPORTATION**

**LOCATION #5
IDOT GREY'S FARM PUMP STATION, COLLINSVILLE, IL
(GREY'S LANE AT SPARKS LANE OFF HORSESHOE LAKE)**

SCALE: SHEET NO. OF SHEETS STA. TO STA.

F.A. RTE.	SECTION	COUNTY	TOTAL SHEETS	SHEET NO.
VAR	DISTRICT 8 2013-1	*	9	9
FED. ROAD DIST. NO. ILLINOIS FED. AID PROJECT			CONTRACT NO. 76F68	