

STATE OF ILLINOIS
DEPARTMENT OF TRANSPORTATION
DIVISION OF HIGHWAYS

**PROPOSED
HIGHWAY PLANS**

IL ROUTE 142 (FAP 776)
SECTION 125R-1

TYPE of IMPROVEMENT: PAVEMENT REPLACEMENT
SALINE COUNTY

C-99-019-12

F.A.P. RTE.	SECTION	COUNTY	TOTAL SHEETS	SHEET NO.
776	125R-1	SALINE	16	1
		ILLINOIS	CONTRACT NO. 78291	

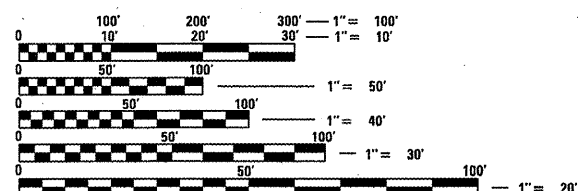
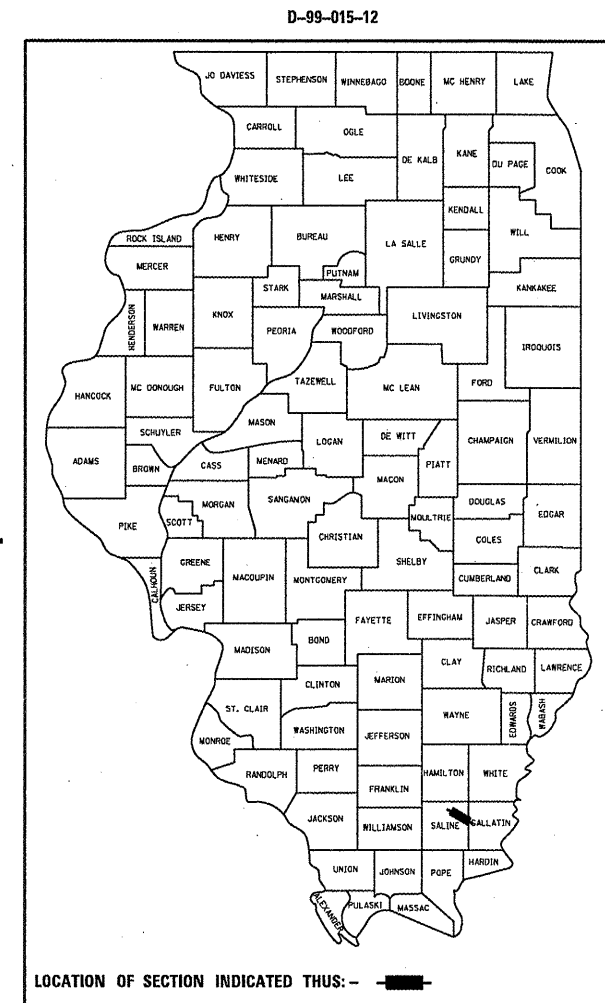
FOR INDEX OF SHEETS, SEE SHEET NO. 3

OMISSIONS:
STA 211+47 TO STA 211+96

ADT (2012)
PV= 2366
MU= 1428
SU= 184
TRUCKS= 35.9%

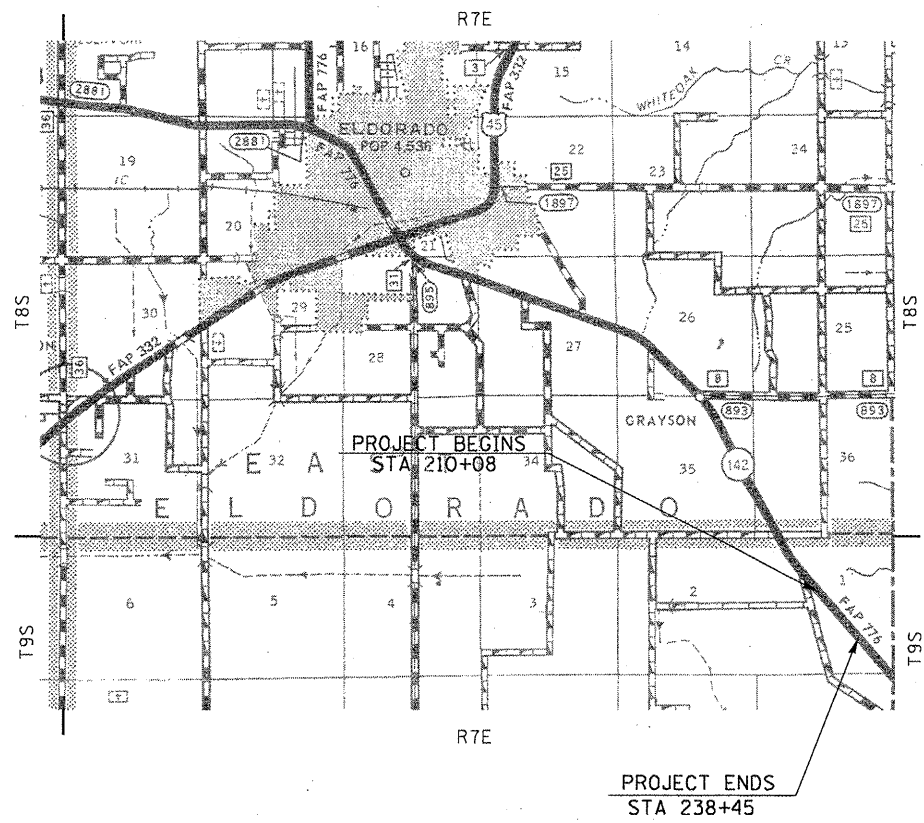
STATION EQUATIONS: NONE

TFpcc= 7.37
TFhmc= 10.17



FULL SIZE PLANS HAVE BEEN PREPARED USING STANDARD ENGINEERING SCALES. REDUCED SIZED PLANS WILL NOT CONFORM TO STANDARD SCALES. IN MAKING MEASUREMENTS ON REDUCED PLANS, THE ABOVE SCALES MAY BE USED.

J.U.L.I.E.
JOINT UTILITY LOCATION INFORMATION FOR EXCAVATION
1-800-892-0123
OR 811



GROSS LENGTH = 2,837 FT. = 0.537 MILE
NET LENGTH = 2,788 FT. = 0.528 MILE
OMISSION LENGTH = 49 FT = 0.009 MILE

PROJECT ENGINEER: JULIO AYBAR
PROJECT MANAGER: CHARLES STEIN

CONTRACT NO. 78291

STATE OF ILLINOIS
DEPARTMENT OF TRANSPORTATION
DIVISION OF HIGHWAYS

SUBMITTED April 3 2012
Conor Johnson
DEPUTY DIRECTOR OF HIGHWAYS, REGION ENGINEER

May 11 2012
John D. Baranzelli, P.E.
ENGINEER OF DESIGN AND ENVIRONMENT

May 11 2012
William R. Freuler
DIRECTOR OF HIGHWAYS, CHIEF ENGINEER

PRINTED BY THE AUTHORITY
OF THE STATE OF ILLINOIS