

STATE OF ILLINOIS
DEPARTMENT OF TRANSPORTATION
DIVISION OF HIGHWAYS

PROPOSED HIGHWAY PLANS

FAP ROUTE 322 (US 51)
SECTION D9 CM BIT RES AND PATCH 2013-2

PATCHING AND RESURFACING JACKSON COUNTY

| | | | | |
|--------------------|--------------|-------------------|--------------------|----------------|
| F.A.P. RTE. 322 | SECTION * | COUNTY JACKSON | TOTAL SHEETS 16 | SHEET NO. 1 |
| | | ILLINOIS | CONTRACT NO. 78302 | |

D9 CM Bit Res and Patch 2013-2

D-99-026-12



FOR INDEX OF SHEETS, SEE SHEET NO. 3

LOCATION #1
US 51 (FAP 322)
TRAFFIC DATA
NEAR TOM'S PLACE DESOTO

| | (2011) | (2032) |
|-------|--------|--------|
| PC = | 5,900 | 8,065 |
| SU = | 225 | 310 |
| MU = | 275 | 375 |
| ADT = | 6,400 | 8,750 |

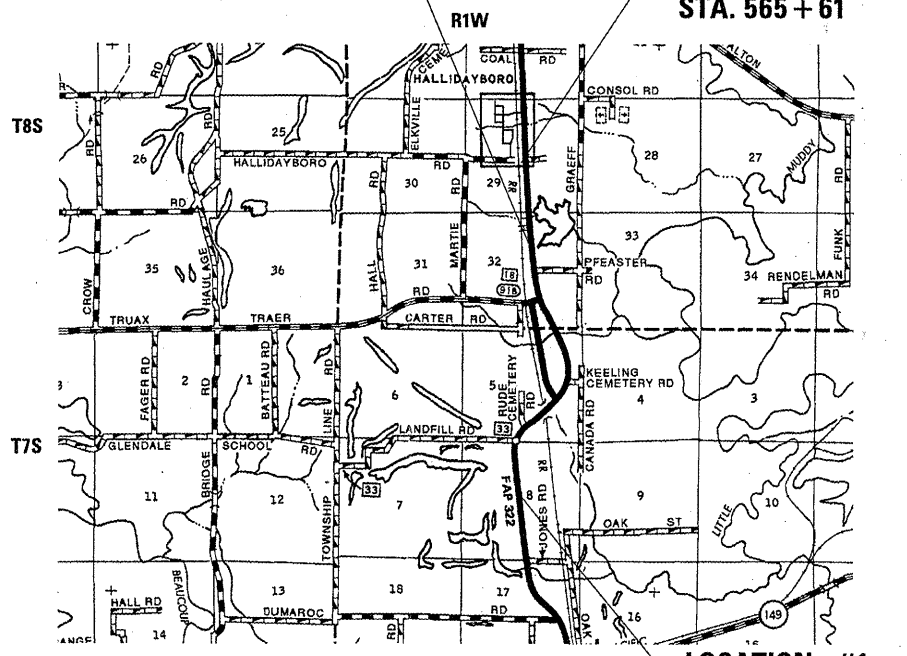
LOCATION #2
US 51 (FAP 322)
TRAFFIC DATA
TRUAX TRAEER RD. TO HALLIDAYBORO RD.

| | (2011) | (2032) |
|-------|--------|--------|
| PC = | 4,980 | 6,810 |
| SU = | 130 | 180 |
| MU = | 190 | 260 |
| ADT = | 5,300 | 7,250 |

C-99-030-12

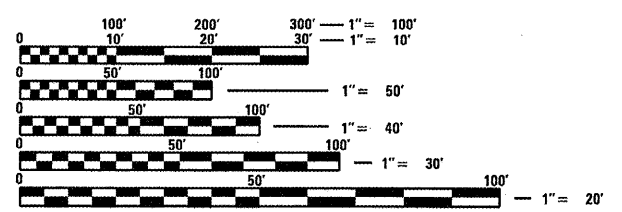
**BEGIN PROJECT
LOCATION #2
US 51 TRUAX TRAEER RD
TO HALLIDAYBORO RD
STA. 511 + 50**

**END PROJECT
LOCATION #2
US 51 TRUAX TRAEER RD
TO HALLIDAYBORO RD
STA. 565 + 61**



**LOCATION #1
US 51 (NEAR TOM'S PLACE)
STA. 1+00 TO STA. 9+50**

TOWNSHIPS: DESOTO, ELK, MILLER



FULL SIZE PLANS HAVE BEEN PREPARED USING STANDARD ENGINEERING SCALES. REDUCED SIZED PLANS WILL NOT CONFORM TO STANDARD SCALES. IN MAKING MEASUREMENTS ON REDUCED PLANS, THE ABOVE SCALES MAY BE USED.

J.U.L.I.E.
JOINT UTILITY LOCATION INFORMATION FOR EXCAVATION
1-800-892-0123
OR 811

PROJECT ENGINEER: CHARLES STEIN
DESIGNER: MELISSA COLE

CONTRACT NO. 78302

STATE OF ILLINOIS
DEPARTMENT OF TRANSPORTATION
DIVISION OF HIGHWAYS

SUBMITTED March 23 2012

Anna Asanovic
DEPUTY DIRECTOR OF HIGHWAYS, REGION ENGINEER

May 11 2012
John D. Baranzelli P.E./B2
ENGINEER OF DESIGN AND ENVIRONMENT

May 11 2012
William R. Frey Jr.
DIRECTOR OF HIGHWAYS, CHIEF ENGINEER

**PRINTED BY THE AUTHORITY
OF THE STATE OF ILLINOIS**