
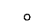


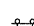


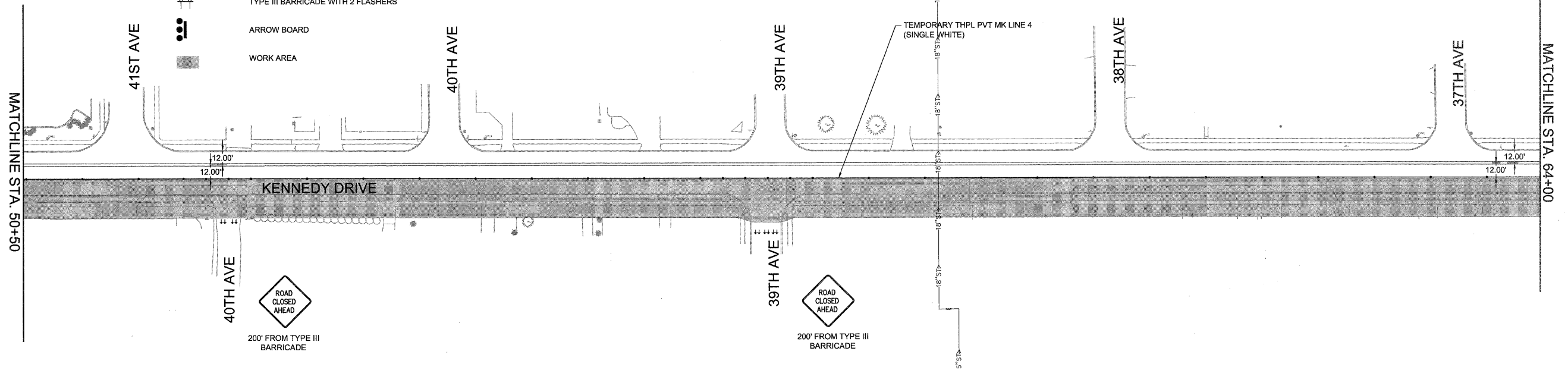



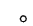





LEGEND

-  TYPE 1/TYPE 2 BARRICADE WITH FLASHER
-  DRUM WITH FLASHER
-  FLAGGER
-  TEMPORARY THPL PVT MK LINE 4 (DOUBLE YELLOW)
-  TYPE III BARRICADE WITH 2 FLASHERS
-  ARROW BOARD
-  WORK AREA

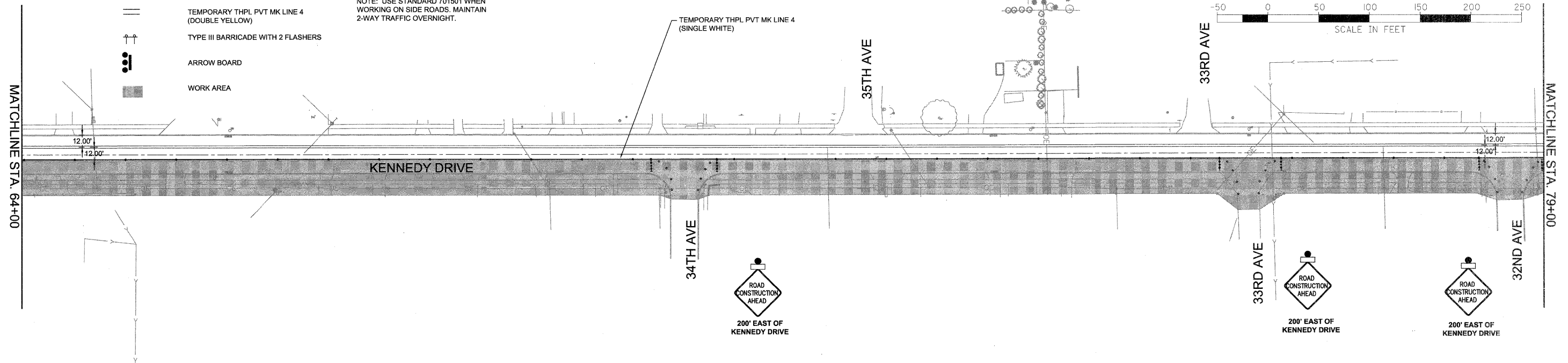
NOTE: USE STANDARD 701501 WHEN WORKING ON SIDE ROADS. MAINTAIN 2-WAY TRAFFIC OVERNIGHT.



LEGEND

-  TYPE 1/TYPE 2 BARRICADE WITH FLASHER
-  DRUM WITH FLASHER
-  FLAGGER
-  TEMPORARY THPL PVT MK LINE 4 (DOUBLE YELLOW)
-  TYPE III BARRICADE WITH 2 FLASHERS
-  ARROW BOARD
-  WORK AREA

NOTE: USE STANDARD 701501 WHEN WORKING ON SIDE ROADS. MAINTAIN 2-WAY TRAFFIC OVERNIGHT.



FILE NAME = P:\Projects\MO\3113710\Deg	USER NAME = LJJ	DESIGNED -- PRL	REVISED --	STATE OF ILLINOIS DEPARTMENT OF TRANSPORTATION	TRAFFIC CONTROL STAGE 3			F.A.U. RTE. 5849	SECTION 11-00151-00-RS	COUNTY ROCK ISLAND	TOTAL SHEETS 75	SHEET NO. 42	
	PLOT SCALE = 50:1.0000' / IN.	DRAWN -- PRL	REVISED --		SCALE:	SHEET 12	OF 23 SHEETS	STA.	TO STA.	CONTRACT NO. 85558			
	PLOT DATE = 3/19/2012	CHECKED -- PRL	REVISED --		ILLINOIS FED. AID PROJECT								
		DATE -- 17APR2012	REVISED --										