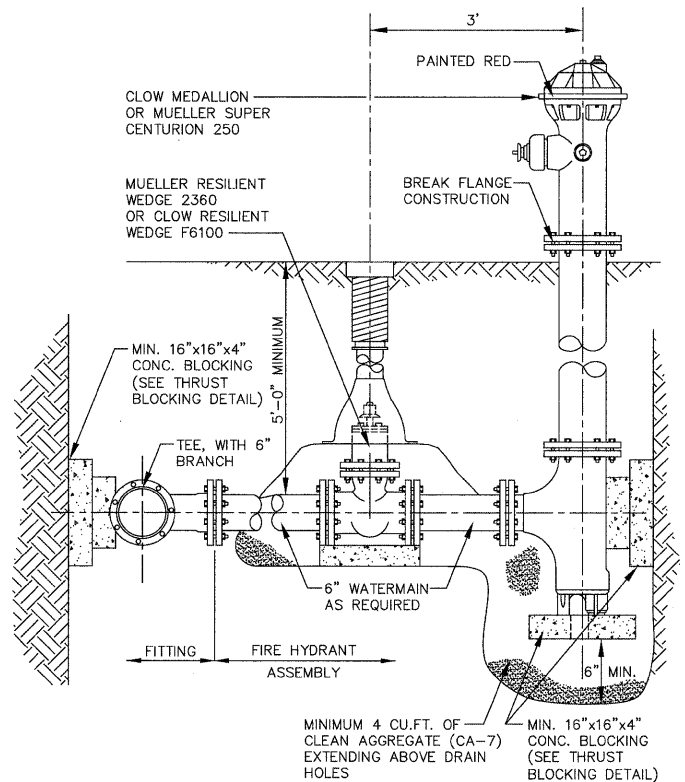
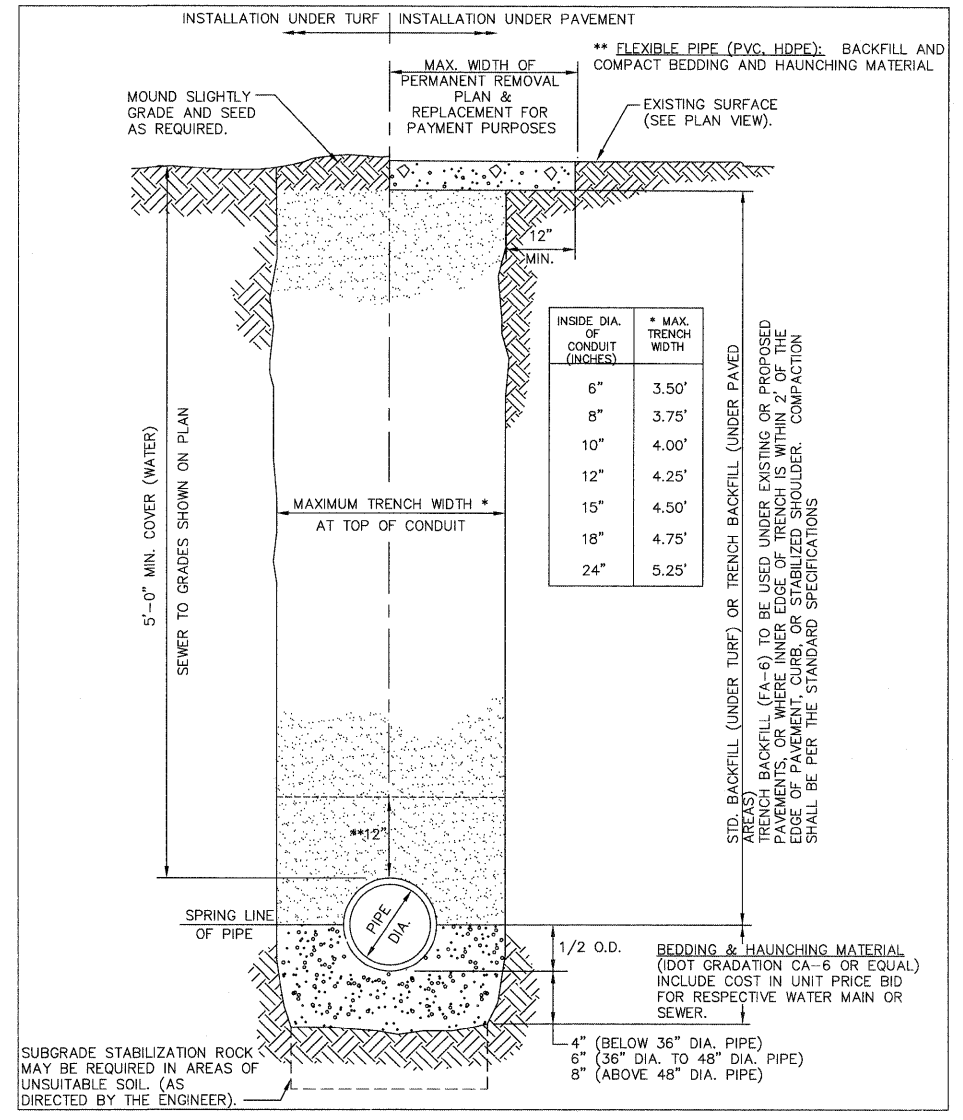


- NOTES:**
- 1.) ALL BLOCKS BEAR AGAINST UNDISTURBED EARTH.
 - 2.) ALL BLOCKS TO BE 3500 P.S.I. CONCRETE.
 - 3.) ALL FITTINGS SHOWN IN PLAN EXCEPT VERTICAL BEND.
 - 4.) IN ADDITION TO THE REQUIRED THRUST BLOCKING, ALL FITTINGS SHALL BE ANSI/AWWA C153/A21.53 DUCTILE IRON WITH MECHANICAL JOINTS USING MJ FIELD-LOK GASKET RETAINER GLANDS OR APPROVED EQUAL.

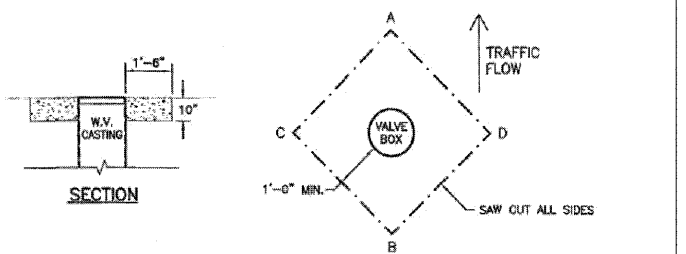
7 THRUST BLOCKING
NTS



8 FIRE HYDRANT ASSEMBLY
NTS



9 TRENCH BACKFILL
NTS

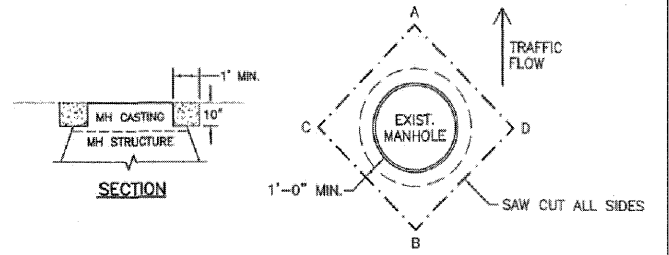


1. WATER VALVE BOX SHALL BE ADJUSTED AFTER PAVING IS COMPLETED.
2. SAW CUT SQUARE OPENING SET AT DIAGONAL, WITH POINTS OF DIAGONAL ABOUT 1.5" MINIMUM FROM EDGE OF OPENING HAS VERTICAL WALLS.
3. REMOVE PAVEMENT MATERIAL AND ADJUST WATER VALVE BOX TO WITHIN 1/4" TO 3/8" OF TOP OF NEW PAVEMENT IF STRING IS PULLED FROM POINT A TO B. CHECK C TO D WITH STRING FOR POTENTIAL CONFLICT AND ADJUST AS NEEDED.
4. PRIOR TO PLACEMENT OF CONCRETE MAKE SURE THE BASE IS COMPACTED SUFFICIENTLY & OUTSIDE EDGE OF OPENING HAS VERTICAL WALLS.
5. FILL VOID WITH MINIMUM OF 10" OF CONCRETE, THIS WORK SHALL MEET THE REQUIREMENTS OF ARTICLE 442.02 NOTE #1 AND ARTICLE 701.17(a)(2)&(3).
6. TROWEL OFF CONCRETE FLUSH WITH NEW PAVEMENT AND BROOM FINISH. WATER VALVE BOX FRAME SHALL BE RECESSED FROM CONCRETE NO MORE THAN 3/8".
7. WATER VALVE BOX ADJUSTMENT MAY BE ACCOMPLISHED BY RAISING TOP SECTION OR BY PLACEMENT OF RISER RING. THIS WORK SHALL CONFORM TO SECTION 602 OF THE "STANDARD SPECIFICATIONS FOR ROAD AND BRIDGE CONSTRUCTION IN ILLINOIS", LATEST EDITION. THE WORK SHALL BE PAID FOR AT THE CONTRACT UNIT PRICE PER EACH FOR WATER VALVES TO BE ADJUSTED.
8. THE CONTRACTOR SHALL ALSO MARK THE LOCATION OF EACH VALVE PRIOR TO PAVING ALONG THE EDGE OF THE PAVEMENT OR CURB WITH A LATH AND OR PAINT MARKS SO THAT IT CAN BE READILY FOUND. THE ABOVE WORK SHALL BE INCIDENTAL TO THE WATER VALVE ADJUSTMENT.

NOTE: IF AN ADJUSTING RING IS USED DURING THE PAVING OPERATION, AND ADJUSTED WATER VALVE BOX MATCHES THE NEW PAVEMENT WITHOUT FURTHER ADJUSTMENT, THEN SAW CUTTING, REMOVAL OF MATERIAL, AND CONCRETE PLACEMENT WILL NOT BE REQUIRED. THIS WORK SHALL BE CONSIDERED INCIDENTAL TO WATER VALVE TO BE ADJUSTED.

WATER VALVES
IF CASTING IS REMOVED PRIOR TO PAVEMENT GRINDING OR PAVEMENT RE-SURFACING, A GED TECHNICAL FABRIC SHALL BE PLACED OVER OPENING OF THE WATER VALVE THAT WAS HAMMERED OUT. A PLYWOOD COOKIE AND THE WATER VALVE LID SHALL BE PLACED OVER THE FABRIC AND BACKFILLED WITH GRAVEL. IT SHALL BE THE RESPONSIBILITY OF THE CONTRACTOR TO CLEAN OUT ANY DEBRIS FROM THE VALVE BOX PRIOR TO AND DURING THE ADJUSTMENT OF THE CASTING.

10 WATER VALVE ADJUSTMENT DETAIL
NTS

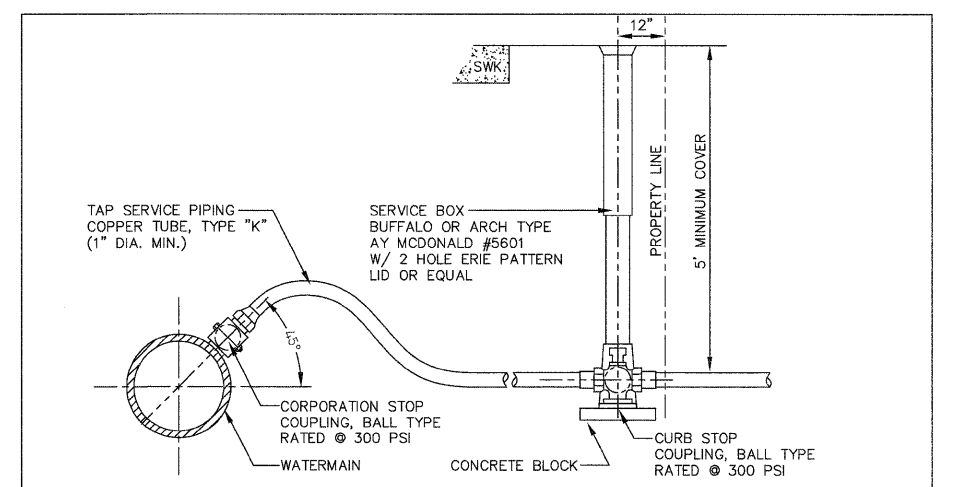


1. ADJUST MANHOLE AFTER PAVING IS COMPLETED.
2. SAW CUT SQUARE OPENING SET AT DIAGONAL, WITH POINTS OF DIAGONAL ABOUT 1.5" FROM EDGE OF MANHOLE.
3. REMOVE PAVEMENT MATERIAL AND ADJUST MANHOLE TO WITHIN 1/4" TO 3/8" OF TOP OF NEW PAVEMENT IF STRING IS PULLED FROM POINT A TO B. CHECK C TO D WITH STRING FOR POTENTIAL CONFLICT AND ADJUST AS NEEDED.
4. PRIOR TO PLACEMENT OF CONCRETE, MAKE SURE BASE IS COMPACTED SUFFICIENTLY & OUTSIDE EDGE OF OPENING HAS VERTICAL WALLS.
5. FILL VOID WITH MINIMUM OF 10" OF CONCRETE, THIS WORK SHALL MEET THE REQUIREMENTS OF ARTICLE 442.02 NOTE #1 AND ARTICLE 701.17(a)(2)&(3).
6. TROWEL OFF CONCRETE FLUSH WITH NEW PAVEMENT AND BROOM FINISH. MANHOLE FRAME SHALL BE RECESSED FROM CONCRETE NO MORE THAN 3/8".
7. IF MANHOLE FRAME AND LID IS WITHIN 2" OF FINAL ADJUSTMENT, AN ADJUSTING RING MAY BE USED INSTEAD OF COMPLETE REMOVAL OF CASTING AND ADJUSTMENT. THIS WORK SHALL CONFORM TO SECTION 602 OF THE "STANDARD SPECIFICATIONS FOR ROAD AND BRIDGE CONSTRUCTION IN ILLINOIS", LATEST EDITION. THE WORK SHALL BE PAID FOR AT THE CONTRACT UNIT PRICE PER EACH FOR MANHOLES TO BE ADJUSTED, WHICH SHALL INCLUDE SAW CUTTING, REMOVAL OF MATERIAL, RISER RING, AND PLACEMENT OF CONCRETE.
8. IF MANHOLE FRAME AND LID REQUIRES AN ADJUSTMENT OF GREATER THAN 2", THEN REMOVAL OF CASTING AND LID SHALL BE REQUIRED WITH NEEDED ADJUSTMENT AS PER SECTION 602 OF THE "STANDARD SPECIFICATIONS FOR ROAD AND BRIDGE CONSTRUCTION IN ILLINOIS", LATEST EDITION. THE WORK SHALL BE PAID FOR AT THE CONTRACT UNIT PRICE PER EACH FOR MANHOLES TO BE ADJUSTED, WHICH SHALL INCLUDE SAW CUTTING, REMOVAL OF MATERIAL, ADJUSTMENT OF MANHOLE FRAME AND LID AND CONCRETE PLACEMENT.
9. THE CONTRACTOR SHALL ALSO MARK THE LOCATION OF EACH MANHOLE PRIOR TO PAVING ALONG THE EDGE OF THE PAVEMENT OR CURB WITH A LATH AND OR PAINT MARKS SO THAT IT CAN BE READILY FOUND. THE ABOVE WORK SHALL BE INCIDENTAL TO THE MANHOLE ADJUSTMENT.

NOTE: IF DURING THE PAVING OPERATION AN ADJUSTING RING IS USED AND ADJUSTED MANHOLE MATCHES THE NEW PAVEMENT, THEN SAW CUTTING, REMOVAL OF MATERIAL AND CONCRETE PLACEMENT WILL NOT BE REQUIRED. THIS WORK SHALL BE INCIDENTAL AND SHALL BE CONSIDERED A PART OF THE MANHOLE TO BE ADJUSTED. THIS WORK SHALL CONFORM TO SECTION 602 OF THE "STANDARD SPECIFICATIONS FOR ROAD AND BRIDGE CONSTRUCTION IN ILLINOIS", LATEST EDITION. IF ABOVE WORK DOES NOT MEET GUIDELINES OF ITEM 3 AND 5 AFTER ROLLING OF PAVEMENT, THEN SAW CUTTING AND ADJUSTMENT WILL BE REQUIRED AS PER INSTRUCTIONS ABOVE.

MANHOLES
IF CASTING IS REMOVED PRIOR TO PAVEMENT GRINDING OR PAVEMENT RE-SURFACING, A GED TECHNICAL FABRIC SHALL BE PLACED OVER OPENING OF THE MANHOLE THAT WAS HAMMERED OUT. A PLYWOOD COOKIE AND THE MANHOLE LID SHALL BE PLACED OVER THE FABRIC AND BACKFILLED WITH GRAVEL. IT SHALL BE THE RESPONSIBILITY OF THE CONTRACTOR TO CLEAN OUT ANY DEBRIS FROM WITHIN THE MANHOLE PRIOR TO AND DURING THE ADJUSTMENT OF THE CASTING.

11 MANHOLE ADJUSTMENT DETAIL
NTS



- NOTES:**
- 1.) ALL CONNECTIONS ARE FLARE TYPE CONFORMING TO AWWA/ANSI C800
 - 2.) EACH WATER SERVICE PIPE SHALL BE CONNECTED TO THE WATERMAIN THROUGH A BRASS CORPORATION STOP. THE MAIN SHALL BE TAPPED AT AN ANGLE OF 45 DEGREES WITH THE VERTICAL. THE STOP MUST BE TURNED SO THAT THE T-HANDLE WILL BE ON TOP.
 - 3.) A STAINLESS STEEL TAPPING SADDLE SHALL BE USED FOR SERVICE CONNECTIONS TO PVC WATERMANS.

12 WATER SERVICE CONNECTION
NTS