

FAS ROUTE NO.	SEC	COUNTY	TOTAL SHEETS	SHEET NO.
178	*	LEE	14	7
ILLINOIS PROJECT BRS-0178(105)				
* 11-00317-00-BR				
CONTRACT NO. 85560				

SCALE: 1" = 1'-0"

REVISION	DATE

DESIGNED BY:	RLR
DRAWN BY:	RLR, BEH
CHECKED BY:	RLR, BEH
SUPERVISOR:	RLR
DATE:	

wendler
 GROUND-BREAKING SOLUTIONS
 engineers - surveyors - scientists
 www.wendlergs.com ph: 815.288.2281
 Illinois Professional Design Firm No. 194-000848

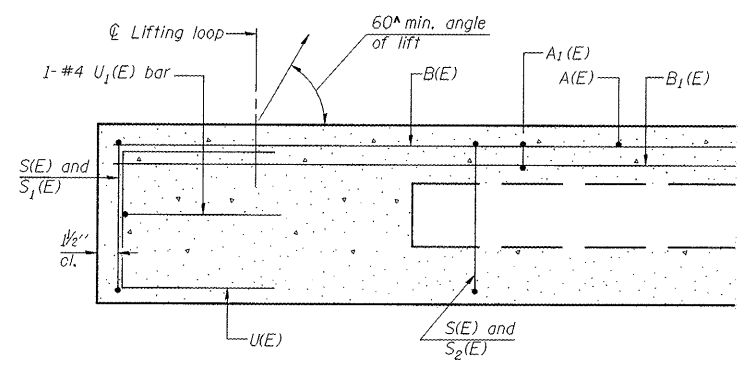
BEAM DETAILS OF PAW PAW ROAD BRIDGE FOR LEE COUNTY HIGHWAY DEPARTMENT

SHEET TITLE
DETAILS

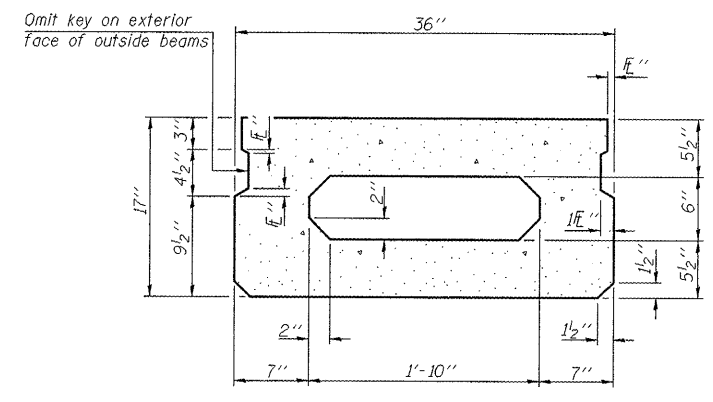
JOB NUMBER
 2110221

DATE
 03/23/2012

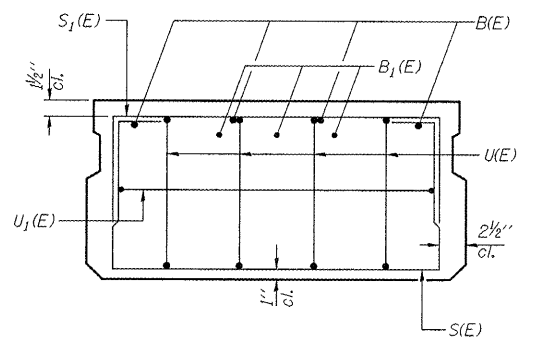
SHEET NO.
7 of 14



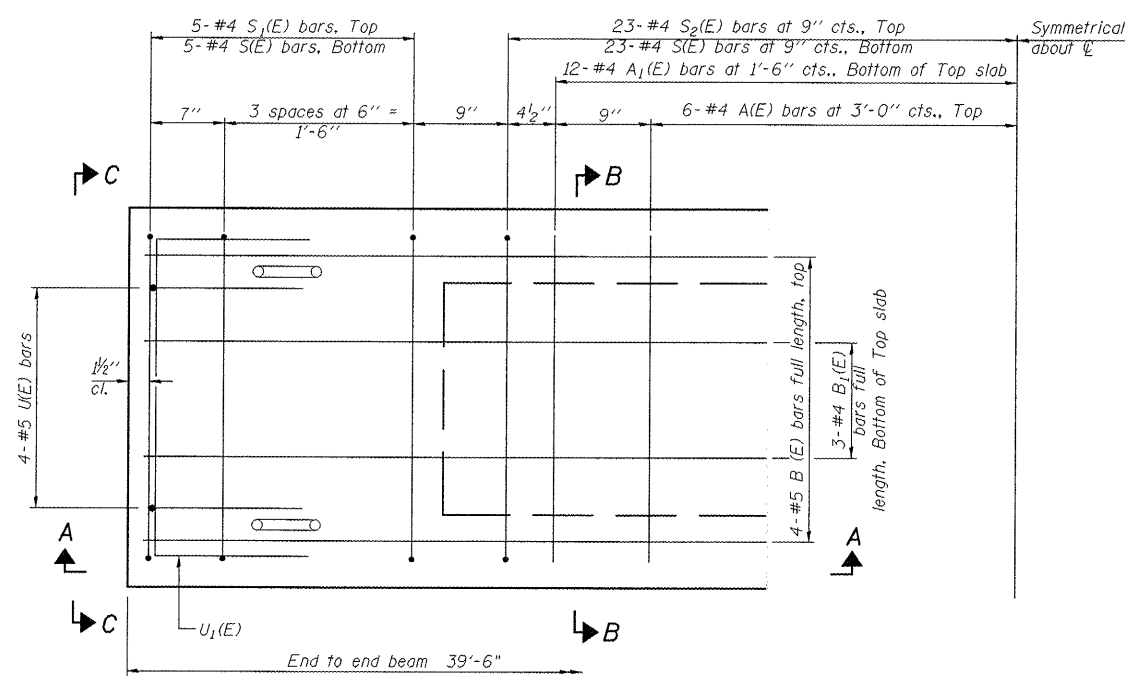
SECTION A-A



SECTION B-B
 (Showing dimensions)

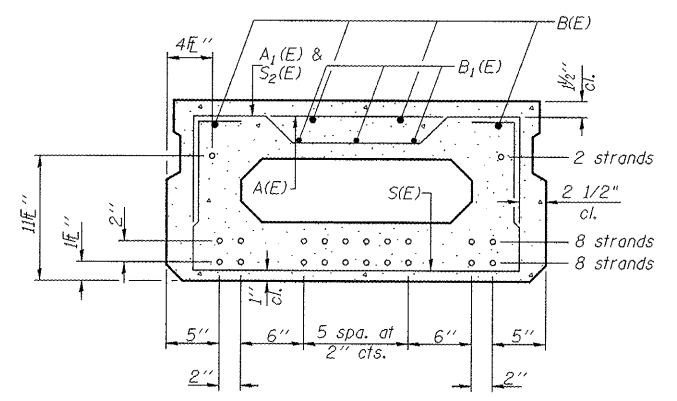


VIEW C-C



PLAN VIEW

Note: Spacing of S(E) and S2(E) bars may be adjusted up to 4" in the immediate area of the transverse tie diaphragms to miss the block outs for the transverse ties.



SECTION B-B
 (Showing reinforcement and permissible strand locations)

Note: Place the number of strands specified in each row symmetrically about the centerline of beam in the permissible strand locations shown.

MINIMUM BAR LAP
 #4 bar = 2'-0"
 #5 bar = 2'-6"

BAR LIST
ONE BEAM ONLY
 (For information only)

Bar	No.	Size	Length	Shape
A(E)	12	#4	2'-7"	—
A1(E)	24	#4	2'-10"	—
B(E)	4	#5	39'-3"	—
B1(E)	3	#4	39'-3"	—
S(E)	56	#4	5'-9"	U
S1(E)	10	#4	4'-3"	U
S2(E)	46	#4	4'-6"	U
U(E)	8	#5	3'-8"	U
U1(E)	2	#4	5'-0"	U

Note: See sheet 8 of 14 for additional details and Bill of Material.

D(E)	28	#4	2'-9"	U
------	----	----	-------	---

See sheets 9 & 10 of 14 for additional details.

PD-1736-0 7-1-10

S.N. 052-3513
 17" X 36" PPC DECK BEAM
 PPC DECK BEAM DETAILS
 SECTION 11-00317-00-BR
 LEE COUNTY