

F.A.U. RTE.	SECTION	COUNTY	TOTAL SHEET NO.
5033	11-00581-00-BR	WINNEBAGO	11
FED. ROAD DIST. NO. 2	ILLINOIS	CONTRACT NO.	

INDEX OF SHEETS

SHEET NO.	DESCRIPTION
1	COVER SHEET
2	GENERAL NOTES & ROAD CLOSURE DETAIL
3	SUMMARY OF QUANTITIES
4	TYPICAL SECTIONS
5	REMOVAL PLAN
6	PLAN AND PROFILE
7	EROSION CONTROL, PAVEMENT MARKING & RESTORATION PLAN
8-15	BRIDGE PLANS
16-17	CROSS SECTIONS

STATE STANDARDS

000001-06	STANDARD SYMBOLS, ABBREVIATIONS AND PATTERNS
280001-06	TEMPORARY EROSION CONTROL SYSTEM
424001-06	CURB RAMPS FOR SIDEWALKS
515001-03	NAME PLATE FOR BRIDGES
602301-03	INLET TYPE A
602401-03	MANHOLE TYPE A
604006-04	FRAME AND GRATE TYPE 3
606001-04	CONCRETE CURB TYPE B AND COMBINATION CONCRETE CURB AND GUTTER
701006-03	OFF-RD MOVING OPERATIONS, 2L, 2W, 15' TO 24" FROM PAVEMENT EDGE
701011-02	OFF-RD MOVING OPERATIONS, 2L, 2W, DAY ONLY
701301-04	LANE CLOSURE, 2L, 2W, SHORT TIME OPERATION
701501-06	URBAN LANE CLOSURE, 2L 2W, UNDIVIDED
701801-05	LANE CLOSURE MULTILANE 1W OR 2W CROSSWALK OR SIDEWALK CLOSURE
701901-02	TRAFFIC CONTROL DEVICES
728001-01	TELESCOPING STEEL SIGN SUPPORT
729001-01	APPLICATIONS OF TYPES A & B METAL POSTS (FOR SIGNS & MARKERS)
780001-03	TYPICAL PAVEMENT MARKINGS
BLR 21-9	TYPICAL APPLICATION OF TRAFFIC CONTROL DEVICES FOR CONSTRUCTION ON RURAL LOCAL HIGHWAYS
BLR 22-7	TYPICAL APPLICATION OF TRAFFIC CONTROL DEVICES FOR CONSTRUCTION ON RURAL LOCAL HIGHWAYS

720011-01 METAL POSTS FOR SIGNS, MARKERS & DELINEATORS

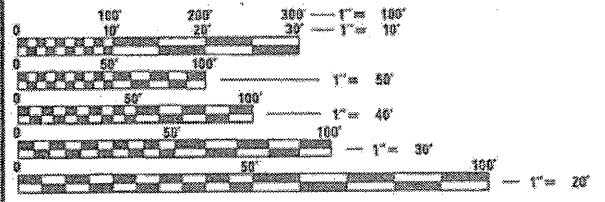
CITY OF ROCKFORD

PLANS FOR PROPOSED FEDERAL AID HIGHWAY

**FAU ROUTE 5033
PIERCE AVENUE
OVER THE NORTHWEST DRAINAGEWAY
SECTION 11-00581-00-BR
BRIDGE SUPERSTRUCTURE REPLACEMENT
PROJECT NO. BHM-5099 (108)
EXIST. S.N. 101-6006
WINNEBAGO COUNTY
C-92-108-12**

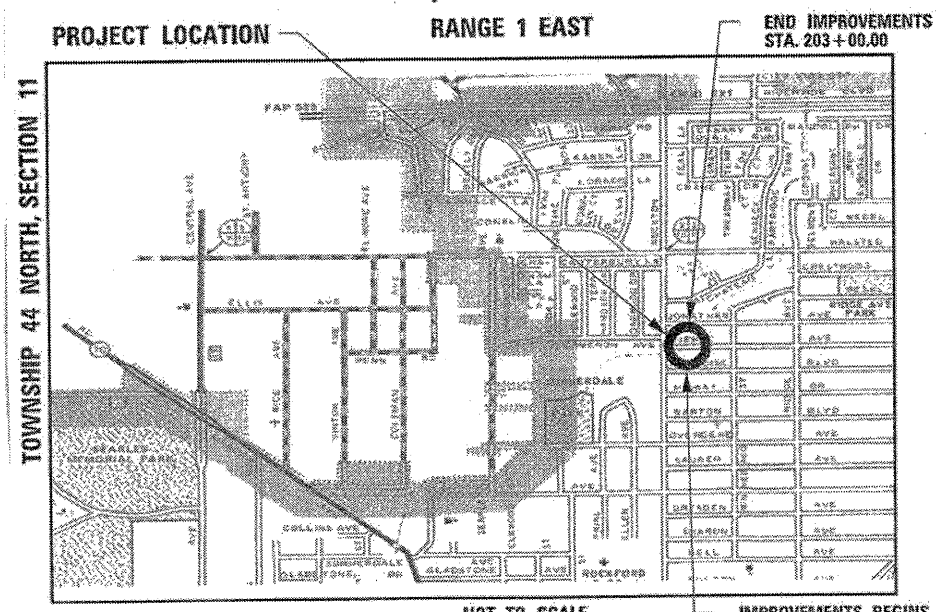


STRUCTURE INFORMATION:
EXISTING SN: 101-6006
THE EXISTING STRUCTURE BUILT IN 1962 CONSISTS OF A SINGLE SPAN PRECAST, PRESTRESSED CONCRETE DECK BEAM BRIDGE WITH AN OUT-TO-OUT WIDTH OF 42'-4" AND A TOTAL LENGTH OF 32'-5" BK TO BK. ABUTMENTS, THE STRUCTURE HAS A 44° 55' 21" SKEW. SUPERSTRUCTURE TO BE REMOVED AS SHOWN.
PROPOSED WORK INCLUDES PLACING A NEW REINFORCED CONCRETE SLAB SUPERSTRUCTURE AS SHOWN.



FULL SIZE PLANS HAVE BEEN PREPARED USING STANDARD ENGINEERING SCALES. REDUCED SIZED PLANS WILL NOT CONFORM TO STANDARD SCALES. IN MAKING MEASUREMENTS ON REDUCED PLANS, THE ABOVE SCALES MAY BE USED.

J.U.L.I.E.
JOINT UTILITY LOCATION INFORMATION FOR EXCAVATION
1-800-892-0123



NOT TO SCALE
IMPROVEMENTS BEGINS STA. 201+38.42
END IMPROVEMENTS STA. 203+00.00
GROSS LENGTH OF IMPROVEMENT = 161.58 FT. = 0.031 MILES
NET LENGTH OF IMPROVEMENT = 161.58 FT. = 0.031 MILES

FUNCTIONAL CLASSIFICATION
COLLECTOR (URBAN)

DESIGN SPEED
PIERCE AVENUE: 30 MPH

SPEED LIMIT
PIERCE AVENUE: 25 MPH

TRAFFIC DATA:
PIERCE AVENUE:
ADT = 700 (2012)
ADT = 900 (2032)
2% TRUCKS

PRINTED BY THE AUTHORITY OF THE STATE OF ILLINOIS

CITY OF ROCKFORD

APPROVED: *[Signature]* 3/26/2012 (DATE)
MITHEN VINEY, P.E.
CITY OF ROCKFORD, CITY ENGINEER

PASSED: *[Signature]* April 10, 2012 (DATE)
DISTRICT 2 ENGINEER OF LOCAL ROADS & STREETS

RELEASING FOR BID BASED ON LIMITED REVIEW: *[Signature]* April 10, 2012 (DATE)
DEPUTY DIRECTOR OF HIGHWAYS, REGION 2 ENGINEER

FEDERAL AID DESIGN ENGINEER: LAURA CONNOLLY (815) 264-2271



1330 E. STATE STREET, SUITE 4 | ROCKFORD, ILLINOIS 61104
Phone: 815.968.7986 | Toll Free: 800.728.7905 | Fax: 815.968.9256 | HRGreen.com
ILLINOIS PROFESSIONAL DESIGN FIRM #184-001322

PROJECT ENGINEER: KEVIN M. ARFT, P.E.
PROJECT MANAGER: ROBERT G. DAVIES, S.E., P.E.
CONTRACT NO. 85563

STRUCTURAL ENGINEER'S SIGN & SEAL

[Signature]
ROBERT G. DAVIES, S.E., P.E.
03/26/2012
DATE
11/30/2012
EXPIRES

PROFESSIONAL ENGINEER'S SIGN & SEAL

[Signature]
KEVIN M. ARFT, P.E.
03/26/2012
DATE
11/30/2013
EXPIRES