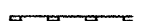





EROSION CONTROL NOTES

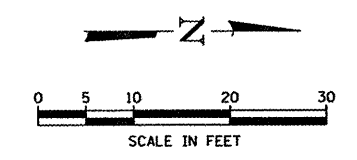
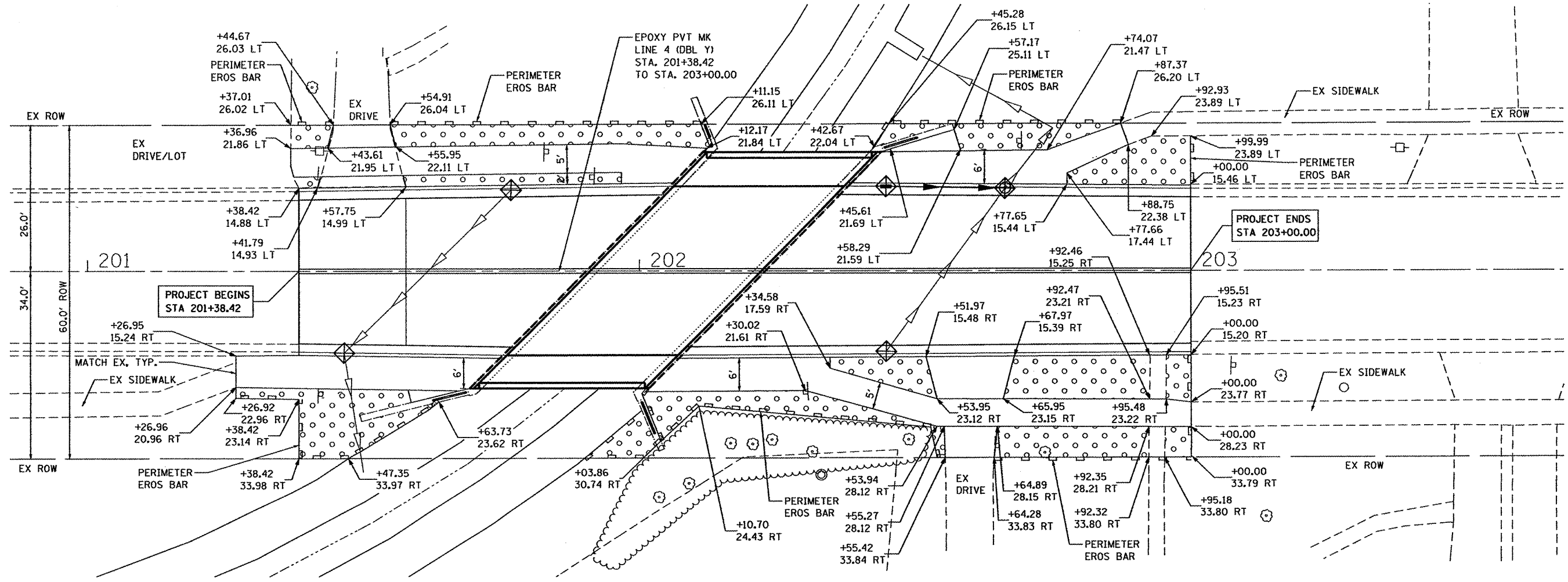
1. THE CONTRACTOR WILL BE REQUIRED TO IMPLEMENT AND MAINTAIN EROSION CONTROL MEASURES IMMEDIATELY AFTER STRIPPING OF EXISTING VEGETATION.
2. STOCKPILES OF SOIL AND OTHER BUILDING MATERIALS TO REMAIN IN PLACE MORE THAN THREE (3) DAYS SHALL BE FURNISHED WITH EROSION AND SEDIMENT CONTROL MEASURES (I.E. PERIMETER SILT FENCE), STOCKPILES TO REMAIN IN PLACE FOR 14 DAYS OR MORE SHALL RECEIVE TEMPORARY SEEDING.
3. THE CONTRACTOR SHALL TAKE ALL PRECAUTIONS TO PREVENT POLLUTION OF STORM WATER AND SHALL FOLLOW IEPA REGULATIONS & IDOT CONSTRUCTION MEMORANDUM NO. 06-60.
4. STABILIZATION MEASURES SHALL BE INITIATED WITHIN 7 DAYS OF CONSTRUCTION ACTIVITY TEMPORARILY OR PERMANENTLY CEASING IN AREAS WHERE IT WILL NOT OCCUR FOR A PERIOD OF 14 OR MORE CALENDAR DAYS.
5. THE SOIL EROSION AND SEDIMENT CONTROL PRACTICES WILL BE INSPECTED WEEKLY AND AFTER 1/2 INCH OF RAIN OR MORE BY THE INDIVIDUAL ON SITE IN CHARGE OF SOIL EROSION AND SEDIMENT CONTROL DURING THE CONSTRUCTION OF THE PROJECT.
6. SILT FENCE SHALL BE INSTALLED FOLLOWING THE COMPLETION AND STABILIZATION OF THE STORMWATER FACILITIES AND WILL REMAIN IN PLACE UNTIL THE CONTRIBUTING AREA IS STABILIZED.
7. ALL ADJACENT STREETS MUST BE KEPT CLEAR OF DEBRIS, INSPECTED DAILY AND CLEANED WHEN NECESSARY OR AS DIRECTED BY THE ENGINEER.
8. ALL SOIL EROSION AND SEDIMENT CONTROL PRACTICES ARE REFERENCED FROM THE ILLINOIS URBAN MANUAL.
9. THE CONTRACTOR WILL BE REQUIRED TO HAVE A DESIGNATED WASHOUT AREA FOR ALL CONCRETE POURS.

LEGEND

-  PERIMETER EROSION BARRIER
-  EXISTING R.O.W.
-  FINAL RESTORATION OF DISTURBED AREAS
- TOPSOIL FURNISH AND PLACE, 4"
- SEEDING CLASS 2A
- EROSION CONTROL BLANKET
-  INLET AND PIPE PROTECTION

TEMPORARY EROSION CONTROL SEQUENCE OF CONSTRUCTION

1. ESTABLISH TEMPORARY EROSION CONTROL MEASURES AND ERECT PERIMETER EROSION BARRIER ALONG SITE BOUNDARIES PRIOR TO EARTHWORK.
2. INSTALL TEMPORARY EROSION CONTROL SEEDING.



HRGREEN
 COMPANY NAME: Kevin M. Art
 PROJECT CONTACT: 815-998-1800
 CLIENT: 11-00581-00-BR
 FILE NAME: 86110877-Erodgn
 PLOT DRIVER: pdfplot
 PEN TABLE: standard-trans.tbl


HRGreen.com
 Wholesale Professional Design Firm
 # 184-001322

USER NAME = whood	DESIGNED - KMA	REVISED -
FILE NAME = 86110877-Erodgn	DRAWN - WJH	REVISED -
PLOT SCALE =	CHECKED - RGD	REVISED -
PLOT DATE = 3/23/2012	DATE - 3/26/12	REVISED -

CITY OF ROCKFORD

PIERCE AVENUE OVER NORTHWEST DRAINAGWAY
EROSION CONTROL, PAVEMENT MARKING & RESTORATION PLAN

F.A.U. RTE. 5033	SECTION 11-00581-00-BR	COUNTY WINNEBAGO	TOTAL SHEETS 17	SHEET NO. 7
FED. ROAD DIST. NO. 2 ILLINOIS FED. AID PROJECT			CONTRACT NO. 17	