

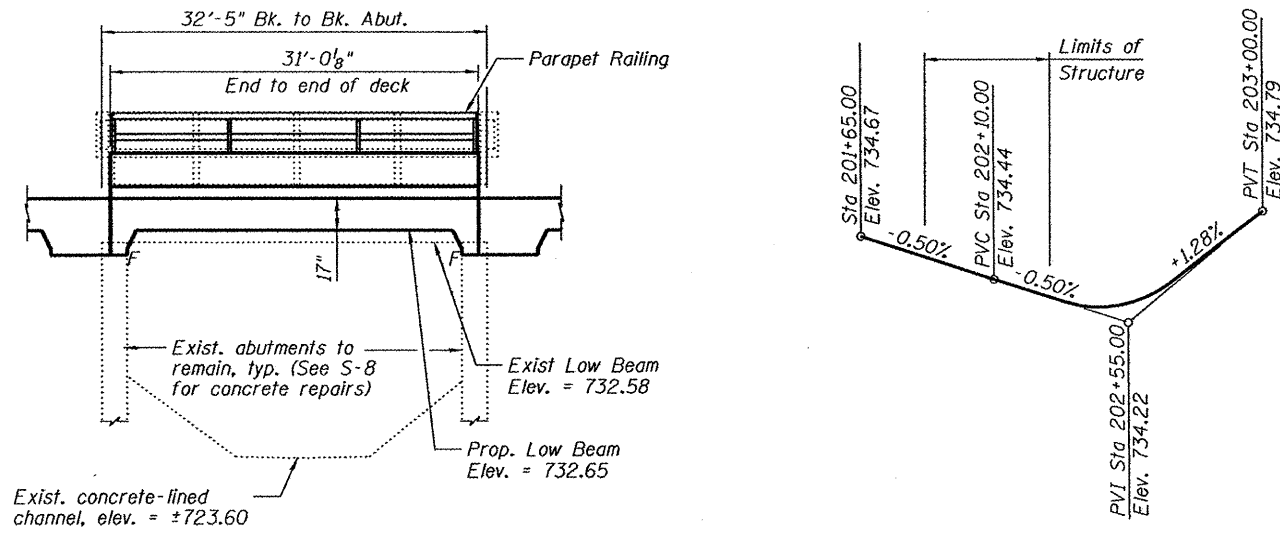
Benchmark:
 Railroad spike in south face of the first power pole east of the Northwest Drainageway and on the north side of Pierce Ave.
 Elevation=736.96 NAVD88

Existing Structure: S.N. 101-6006 The existing structure was built in 1962 by the City of Rockford as a single-span precast, prestressed concrete deck beam bridge supported on closed abutments. The bridge is 32'-5" Bk. to Bk. abutments with an out-to-out width of 42'-4". The design loading used was HS 20 according to the bridge inventory. The scope of improvements includes removal of the existing precast, prestressed concrete deck beam superstructure and placement of a reinforced concrete slab superstructure. The existing abutments and wingwalls are to remain. The project will be constructed under a temporary closure of Pierce Avenue.

Salvage: Abutments and wingwalls to remain.

NORTHWEST DRAINAGEWAY
 RE-BUILT 20... BY
 CITY OF ROCKFORD
 SEC 11-00581-00-BR
 F.A.R.T. 5033 STA. 202+06.59
 STRUCTURE NO. 101-6006
 LOADING HS20-44

NAME PLATE
 See Std. 515001



LOADING HS20-44
 No future wearing surface allowed

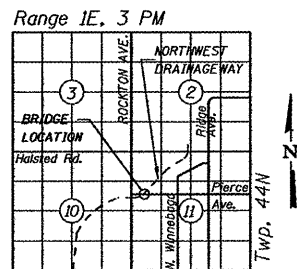
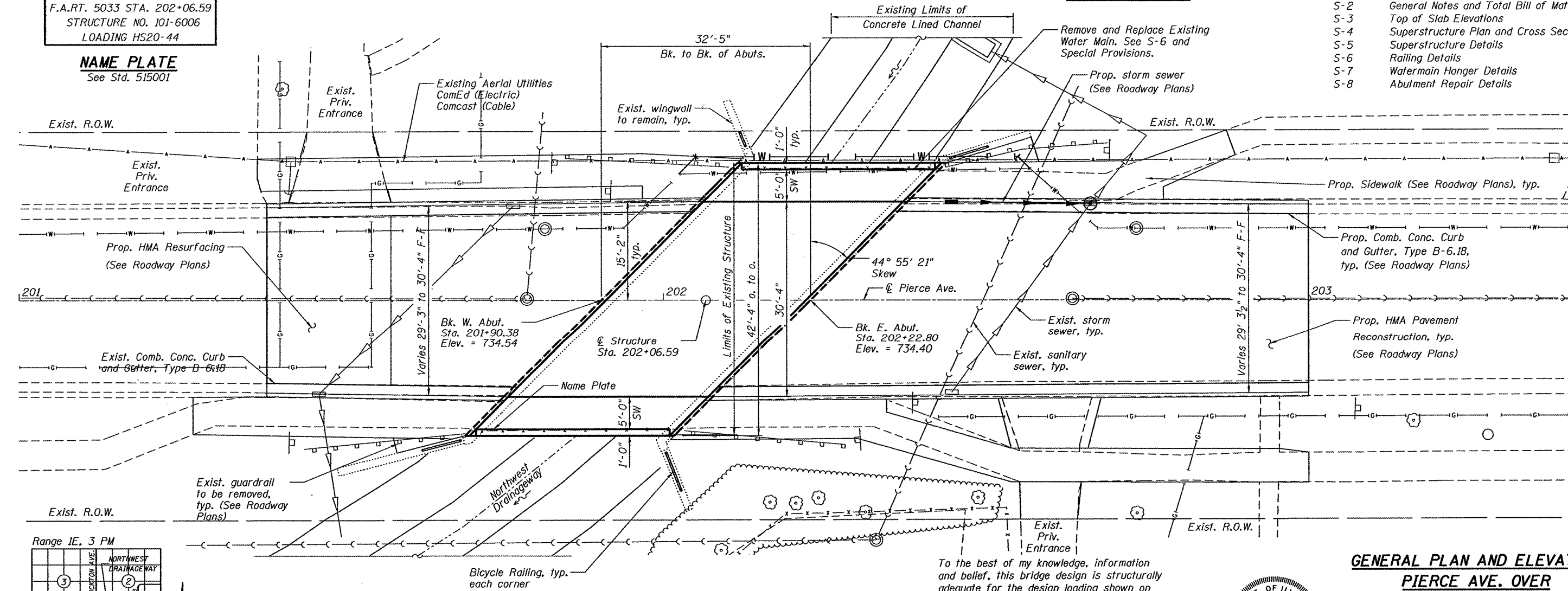
DESIGN SPECIFICATIONS
 2002 AASHTO Standard Specifications

DESIGN STRESSES
FIELD UNITS
 $f'_c = 3,500$ psi
 $f_y = 60,000$ psi (Reinforcement)
 $f_y = 50,000$ psi (M270 Grade 50)

SEISMIC DATA
 Seismic Performance Category (SPC) = A
 Bedrock Acceleration Coefficient (A) = 4%
 Site Coefficient (S) = 1.0

INDEX OF SHEETS

- S-1 General Plan and Elevation
- S-2 General Notes and Total Bill of Materials
- S-3 Top of Slab Elevations
- S-4 Superstructure Plan and Cross Section
- S-5 Superstructure Details
- S-6 Railing Details
- S-7 Watermain Hanger Details
- S-8 Abutment Repair Details



LOCATION SKETCH

To the best of my knowledge, information and belief, this bridge design is structurally adequate for the design loading shown on the plans. The design is an economical one for the style of structure and complies with requirements of the current "AASHTO Standard Specifications for Highway Bridges".

Robert J. Green
 Structural Engineer Expires: 11/30/2012
 HR Green



GENERAL PLAN AND ELEVATION
PIERCE AVE. OVER
NORTHWEST DRAINAGE WAY
SEC. 11-00581-00-BR
WINNEBAGO COUNTY
STA. 202+06.59
S.N. 101-6006

COMPANY NAME: HRGreen
 PROJECT CONTACT: Kevin M. Arff
 CLIENT: City of Rockford
 DATE PLOTTED: 3/23/2012 10:58:29 AM
 FILE NAME: 8610077.dwg
 PLOT DRIVER: pdwpltr
 PEN TABLE: standard-trans.tbl



USER NAME = whood	DESIGNED - JPC	REVISED -
	CHECKED - WJH	REVISED -
PLOT SCALE =	DRAWN - RGD	REVISED -
PLOT DATE = 3/23/2012	CHECKED - 3/26/12	REVISED -

CITY OF ROCKFORD

SHEET NO. S-1 OF S-8 SHEETS

F.A. RTE.	SECTION	COUNTY	TOTAL SHEETS	SHEET NO.
5033	11-00581-00-BR	WINNEBAGO	17	8
				CONTRACT NO.
ILLINOIS FED. AID PROJECT				