

F.A.U. RTE.	SECTION	COUNTY	TOTAL SHEET NO.
5033	11-00581-00-BR	WINNEBAGO	11
FED. ROAD DIST. NO. 2	ILLINOIS	CONTRACT NO.	

06-15-12 LETTING ITEM 047

**INDEX OF SHEETS**

SHEET NO.	DESCRIPTION
1	COVER SHEET
2	GENERAL NOTES & ROAD CLOSURE DETAIL
3	SUMMARY OF QUANTITIES
4	TYPICAL SECTIONS
5	REMOVAL PLAN
6	PLAN AND PROFILE
7	EROSION CONTROL, PAVEMENT MARKING & RESTORATION PLAN
8-15	BRIDGE PLANS
16-17	CROSS SECTIONS

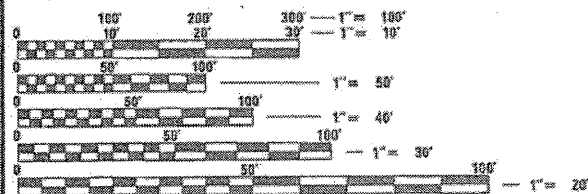
**STATE STANDARDS**

000001-06	STANDARD SYMBOLS, ABBREVIATIONS AND PATTERNS
280001-06	TEMPORARY EROSION CONTROL SYSTEM
424001-06	CURB RAMPS FOR SIDEWALKS
515001-03	NAME PLATE FOR BRIDGES
602301-03	INLET TYPE A
602401-03	MANHOLE TYPE A
604006-04	FRAME AND GRATE TYPE 3
606001-04	CONCRETE CURB TYPE B AND COMBINATION CONCRETE CURB AND GUTTER
701006-03	OFF-RD MOVING OPERATIONS, 2L,2W, 15' TO 24" FROM PAVEMENT EDGE
701011-02	OFF-RD MOVING OPERATIONS, 2L,2W, DAY ONLY
701301-04	LANE CLOSURE, 2L, 2W, SHORT TIME OPERATION
701501-06	URBAN LANE CLOSURE, 2L 2W, UNDIVIDED
701801-05	LANE CLOSURE MULTILANE 1W OR 2W CROSSWALK OR SIDEWALK CLOSURE
701901-02	TRAFFIC CONTROL DEVICES
728001-01	TELESCOPING STEEL SIGN SUPPORT
729001-01	APPLICATIONS OF TYPES A & B METAL POSTS (FOR SIGNS & MARKERS)
780001-03	TYPICAL PAVEMENT MARKINGS
BLR 21-9	TYPICAL APPLICATION OF TRAFFIC CONTROL DEVICES FOR CONSTRUCTION ON RURAL LOCAL HIGHWAYS
BLR 22-7	TYPICAL APPLICATION OF TRAFFIC CONTROL DEVICES FOR CONSTRUCTION ON RURAL LOCAL HIGHWAYS

720011-01 METAL POSTS FOR SIGNS, MARKERS & DELINEATORS

**STRUCTURE INFORMATION:**

EXISTING SN: 101-6006:  
THE EXISTING STRUCTURE BUILT IN 1962 CONSISTS OF A SINGLE SPAN PRECAST, PRESTRESSED CONCRETE DECK BEAM BRIDGE WITH AN OUT-TO-OUT WIDTH OF 42'-4" AND A TOTAL LENGTH OF 32'-5" BK TO BK. ABUTMENTS, THE STRUCTURE HAS A 44° 55' 21" SKEW. SUPERSTRUCTURE TO BE REMOVED AS SHOWN.  
PROPOSED WORK INCLUDES PLACING A NEW REINFORCED CONCRETE SLAB SUPERSTRUCTURE AS SHOWN.



FULL SIZE PLANS HAVE BEEN PREPARED USING STANDARD ENGINEERING SCALES. REDUCED SIZED PLANS WILL NOT CONFORM TO STANDARD SCALES. IN MAKING MEASUREMENTS ON REDUCED PLANS, THE ABOVE SCALES MAY BE USED.

J.U.L.I.E.  
JOINT UTILITY LOCATION INFORMATION FOR EXCAVATION  
1-800-892-0123

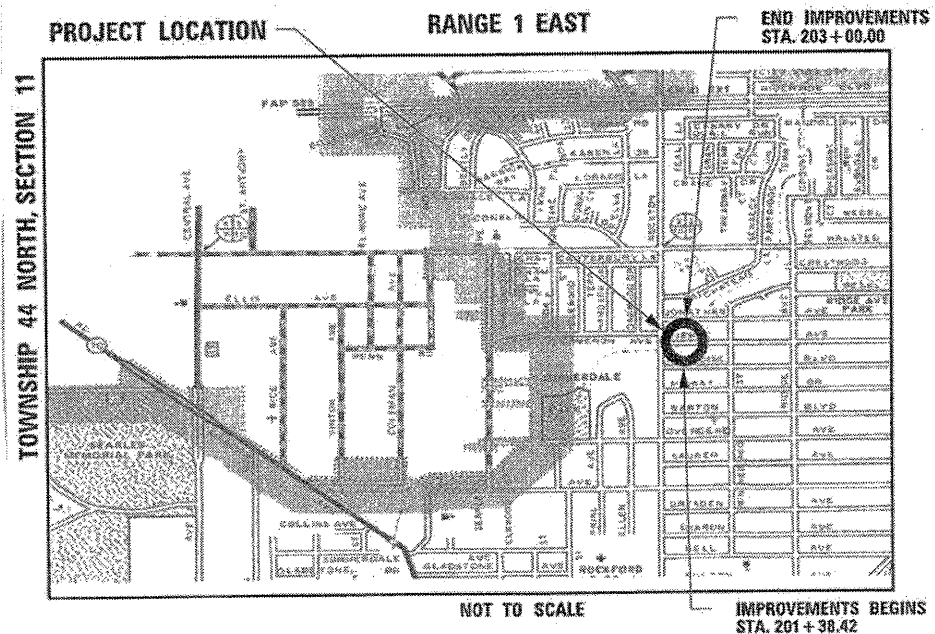


1330 E. STATE STREET, SUITE 4 | ROCKFORD, ILLINOIS 61104  
Phone: 815.968.7986 | Toll Free: 800.728.7905 | Fax: 815.968.9256 | HRGreen.com  
ILLINOIS PROFESSIONAL DESIGN FIRM #184-001322

**PROJECT ENGINEER: KEVIN M. ARFT, P.E.**  
**PROJECT MANAGER: ROBERT G. DAVIES, S.E., P.E.**  
**CONTRACT NO. 85563**

# CITY OF ROCKFORD PLANS FOR PROPOSED FEDERAL AID HIGHWAY

**FAU ROUTE 5033  
PIERCE AVENUE  
OVER THE NORTHWEST DRAINAGEWAY  
SECTION 11-00581-00-BR  
BRIDGE SUPERSTRUCTURE REPLACEMENT  
PROJECT NO. BHM-5099 (108)  
EXIST. S.N. 101-6006  
WINNEBAGO COUNTY  
C-92-108-12**



NOT TO SCALE  
IMPROVEMENTS BEGINS STA. 201+38.42  
GROSS LENGTH OF IMPROVEMENT = 161.58 FT. = 0.031 MILES  
NET LENGTH OF IMPROVEMENT = 161.58 FT. = 0.031 MILES

**FUNCTIONAL CLASSIFICATION**  
COLLECTOR (URBAN)

**DESIGN SPEED**  
PIERCE AVENUE: 30 MPH

**SPEED LIMIT**  
PIERCE AVENUE: 25 MPH

**TRAFFIC DATA:**  
PIERCE AVENUE:  
ADT = 700 (2012)  
ADT = 900 (2032)  
2% TRUCKS



LOCATION OF SECTION INDICATED THIS: -

**PRINTED BY THE AUTHORITY  
OF THE STATE OF ILLINOIS**

CITY OF ROCKFORD

APPROVED: *[Signature]* 3/26/2012 (DATE)  
MITHEN VINEY, P.E.  
CITY OF ROCKFORD, CITY ENGINEER

PASSED: *[Signature]* April 10, 2012 (DATE)  
DISTRICT 2 ENGINEER OF LOCAL ROADS & STREETS

RELEASING FOR BID  
BASED ON LIMITED  
REVIEW: *[Signature]* April 10, 2012 (DATE)  
DEPUTY DIRECTOR OF HIGHWAYS, REGION 2 ENGINEER

STRUCTURAL ENGINEER'S SIGN & SEAL

ROBERT G. DAVIES, S.E., P.E.

03/26/2012

DATE

11/30/2012

EXPIRES

PROFESSIONAL ENGINEER'S SIGN & SEAL

KEVIN M. ARFT, P.E.

03/26/2012

DATE

11/30/2013

EXPIRES

**GENERAL NOTES**

- REMOVAL AND DISPOSAL OF UNSUITABLE MATERIAL, AND POROUS GRANULAR EMBANKMENT SUBGRADE HAS BEEN ADDED FOR USE IF UNSUITABLE MATERIAL IS ENCOUNTERED IN THE FIELD, AS DETERMINED BY THE ENGINEER. IF UNSUITABLE AND/OR UNSTABLE MATERIAL IS NOT ENCOUNTERED, THEN THE QUANTITY SHALL BE DEDUCTED AND NO COMPENSATION WILL BE DUE THE CONTRACTOR.
- FORTY EIGHT HOURS BEFORE STARTING EXCAVATION THE CONTRACTOR WILL CALL J.U.L.I.E. (1-800-892-0123) TO HAVE THE LOCATION OF EXISTING UTILITIES STAKED.
- THE CONTRACTOR SHALL CONTACT THE CITY OF ROCKFORD AT LEAST 72 HOURS IN ADVANCE OF BEGINNING ANY WORK ON PIERCE AVENUE.
- THE CONTRACTOR WILL NOT BE ALLOWED TO SET UP A YARD OR FIELD OFFICE ON CITY PROPERTY WITHOUT WRITTEN PERMISSION FROM THE CITY OF ROCKFORD.
- PRIOR TO COMMENCEMENT OF CONSTRUCTION, THE CONTRACTOR SHALL VERIFY ALL DIMENSIONS AND CONDITIONS AFFECTING THEIR WORK WITH THE ACTUAL CONDITIONS AT THE JOB SITE. IN ADDITION, THE CONTRACTOR MUST VERIFY THE ENGINEER'S LINE AND GRADE STAKES. IF THERE ARE ANY DISCREPANCIES FROM WHAT IS SHOWN ON THE CONSTRUCTION PLANS, HE MUST IMMEDIATELY REPORT SAME TO THE ENGINEER BEFORE DOING ANY WORK, OTHERWISE THE CONTRACTOR ASSUMES FULL RESPONSIBILITY. IN THE EVENT OF DISAGREEMENT BETWEEN THE CONSTRUCTION PLANS, STANDARD SPECIFICATIONS AND/OR SPECIAL DETAILS, THE CONTRACTOR SHALL SECURE WRITTEN INSTRUCTIONS FROM THE ENGINEER PRIOR TO PROCEEDING WITH ANY PART OF THE WORK AFFECTED BY OMISSIONS OR DISCREPANCIES. FAILING TO SECURE SUCH INSTRUCTIONS, THE CONTRACTOR WILL BE CONSIDERED TO HAVE PROCEEDED AT HIS OWN RISK AND EXPENSE. IN THE EVENT OF ANY DOUBT OR QUESTION ARISING WITH RESPECT TO THE TRUE MEANING OF THE CONSTRUCTION PLANS OR SPECIFICATIONS, THE DECISION OF THE ENGINEER SHALL BE FINAL AND CONCLUSIVE.
- THE CONTRACTOR SHALL PROVIDE ACCESS TO ALL ABUTTING PROPERTY AT ALL TIMES DURING THE CONSTRUCTION OF THIS PROJECT, EXCEPT FOR PERIODS OF SHORT DURATION AS DETERMINED BY THE ENGINEER.
- EXCEPT AS NOTED ON THE PLANS, PAVEMENT GRADES SHOWN ARE AT THE TOP OF PAVEMENT SURFACES.
- OFFSET LOCATIONS GIVEN IN THE PLANS FOR STRUCTURES, EDGE OF PAVEMENT, ETC. ARE FROM THE ROADWAY CENTERLINE UNLESS NOTED OTHERWISE.
- ALL ELEVATIONS REFERRING TO U.S.G.S. MEAN SEA LEVEL DATUM.

10. THE LOCATION OF EXISTING DRAINAGE STRUCTURES, STORM SEWERS, WATER MAINS, SANITARY SEWERS, AND ANY OTHER PUBLIC OR PRIVATE UTILITIES AS SHOWN ON THE PLANS IS APPROXIMATE AND THEIR EXACT LOCATION IS TO BE DETERMINED IN THE FIELD BY THE CONTRACTOR. THIS WORK SHALL BE CONSIDERED AS INCLUDED IN THE UNIT BID PRICES OF THE CONTRACT, AND NO ADDITIONAL COMPENSATION WILL BE ALLOWED.

11. THE CONTRACTOR SHALL BE RESPONSIBLE FOR THE PROTECTION OF ALL UNDERGROUND AND SURFACE UTILITIES EVEN THOUGH THEY MIGHT NOT BE SHOWN ON THE PLANS. ANY UTILITY PROPERTY DAMAGED DURING CONSTRUCTION SHALL BE REPAIRED OR REPLACED TO THE SATISFACTION OF THE OWNER AT THE CONTRACTOR'S EXPENSE.

12. ANY LOOSE MATERIAL DEPOSITED IN THE FLOWLINES OF DRAINAGE STRUCTURES WHICH OBSTRUCT THE NATURAL FLOW OF WATER SHALL BE REMOVED AT THE CLOSE OF EACH WORKING DAY. PRIOR TO ACCEPTANCE OF THE IMPROVEMENT, ALL DRAINAGE STRUCTURES SHALL BE FREE OF DIRT AND DEBRIS. THIS WORK SHALL NOT BE PAID FOR SEPARATELY BUT SHALL BE CONSIDERED AS INCLUDED IN THE UNIT BID PRICES OF THE CONTRACT.

13. WHERE NEW WORK MEETS EXISTING FEATURES TO REMAIN, THE CONTRACTOR SHALL FIELD CHECK ALL DIMENSIONS AND ELEVATIONS PRIOR TO PROCEEDING WITH CONSTRUCTION AND NOTIFY THE ENGINEER IMMEDIATELY OF ANY DISCREPANCIES.

14. SEEDING WILL NOT BE PERMITTED AT ANY TIME WHEN THE GROUND IS FROZEN, WET, OR IN AN UNTILLABLE CONDITION. LOCATIONS TO BE SEEDED WILL BE DETERMINED BY THE ENGINEER. SEE ARTICLE 250.06 OF THE STANDARD SPECIFICATIONS.

15. SAW CUTTING WILL BE REQUIRED FOR ALL REMOVAL ITEMS LISTED IN SECTION 440 OF THE STANDARD SPECIFICATIONS, SHOWN IN THE PLANS, AND AS DIRECTED BY THE ENGINEER. THE COST OF SAW CUTTING WILL BE INCLUDED IN CONTRACT UNIT BID PRICES FOR THE ITEMS BEING REMOVED.

16. THE ENGINEER WILL BE THE SOLE JUDGE CONCERNING CURING TIME FOR THE VARIOUS HMA LIFTS.

17. INCIDENTAL GRADING, EARTHWORK AND SHAPING WORK FOR PROPOSED SIDEWALK AND RESTORATION SHALL BE INCLUDED IN THE COST OF THE ASSOCIATED PAY ITEMS.

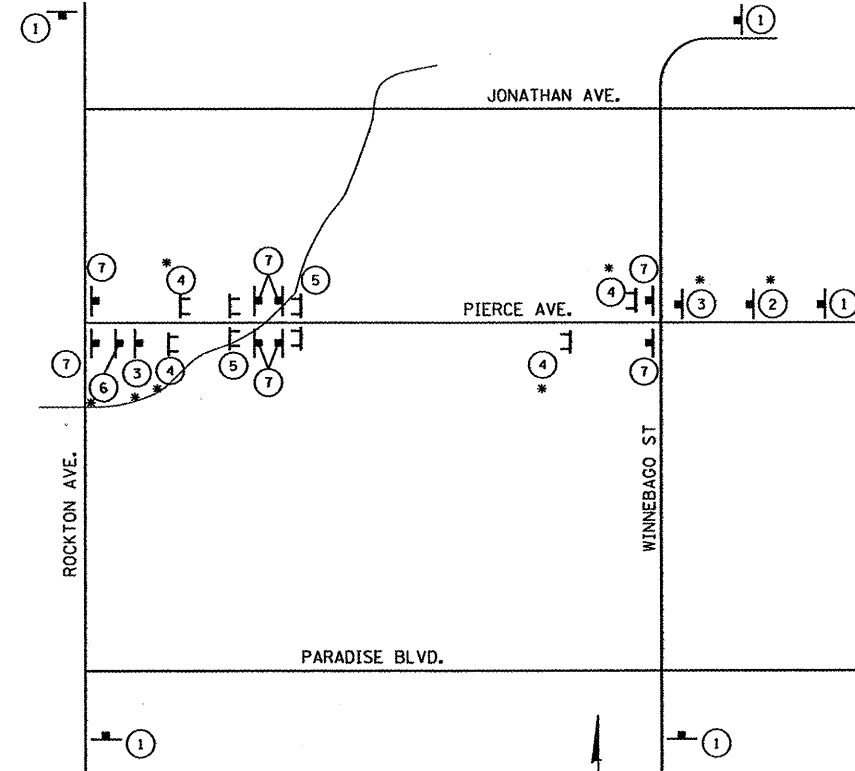
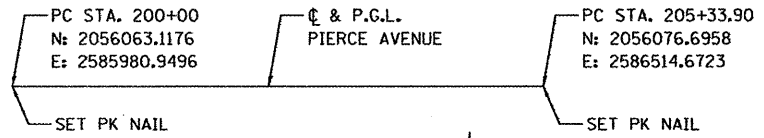
18. SHORT TERM PAVEMENT MARKING HAS BEEN ADDED FOR USE IF NEEDED TO MAINTAIN TRAFFIC CONTROL, AS DETERMINED BY THE ENGINEER. IF THIS ITEM IS NOT NEEDED TO MAINTAIN TRAFFIC CONTROL, THEN THE QUANTITY SHALL BE DEDUCTED AND NO COMPENSATION WILL BE DUE THE CONTRACTOR.

**SYMBOL LEGEND**

	EXISTING	PROPOSED
SANITARY MANHOLE	⊙	⊙
STORM MANHOLE	⊙	⊙
STORM CATCH BASIN	○	●
INLET	□	■
FLARED END SECTION	▽	▽
VALVE VAULT	⊙	⊙
FIRE HYDRANT	▽	▽
LIGHT POLE	*	*
STREET SIGN	+	+
REGULATORY SIGN	+	+
UTILITY POLE	⊙	⊙
UTILITY BOX	⊙	⊙
MAILBOX	⊙	⊙
WELL	⊙	⊙
SANITARY SEWER	—	—
STORM SEWER	—	—
CULVERT	—	—
WATER MAIN	—	—
WATER MAIN ENCASEMENT	—	—
STORM UNDERDRAIN	—	—
ELECTRIC LINE	—	—
TELEPHONE LINE	—	—
GAS LINE	—	—
CABLE TV LINE	—	—
TREELINE	⊙	⊙
TREE	⊙	⊙
FENCE	—	—
EROSION CONTROL FENCE	—	—
DITCH CHECK	—	—
DRAINAGE ARROW	→	→
100 YEAR OVERFLOW	—	—

**STANDARD ABBREVIATIONS**

- B-B - BACK TO BACK OF CURB
- B.C. - BACK OF CURB
- B.O.C. - BACK OF CURB
- B.S.L. - BUILDING SETBACK LINE
- C.B. - STORM CATCH BASIN
- C.E. - COMMONWEALTH EDISON CO.
- D.E. - DRAINAGE EASEMENT
- E-E - EDGE TO EDGE OF PAVEMENT
- E.O.P. - EDGE OF PAVEMENT
- E.O.S. - EDGE OF SHOULDER
- E.P. - EDGE OF PAVEMENT
- E.S. - EDGE OF SHOULDER
- F.E.S. - FLARED END SECTION
- I.B.T. - ILLINOIS BELL TELEPHONE CO.
- L.E. - LANDSCAPE EASEMENT
- M.H. - MANHOLE (TYPE SPECIFIED ON PLANS)
- R.O.W. - RIGHT OF WAY
- T.B.F. - TRENCH BACKFILL
- T.C. - TOP OF CURB
- T.C.E. - TEMPORARY CONSTRUCTION EASEMENT
- T.O.B. - TOP OF BERM
- T.O.C. - TOP OF CURB
- U.E. - UTILITY EASEMENT



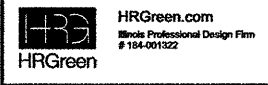
- 1. PIERCE AVENUE CLOSED AT BRIDGE (DATE) USE ALTERNATE ROUTE INFO (60"x30") BLACK MUTCD SERIES B 2000 LETTERING ON ORANGE SIGN PANEL
- 2. ROAD CLOSED 1/2 MILE W20-3 (48"x48") WITH FLASHING AMBER LIGHT
- 3. ROAD CLOSED 500FT W20-3 (48"x48") WITH FLASHING AMBER LIGHT
- 4. ROAD CLOSED TO THRU TRAFFIC PROVIDE SIGN ON RIGHT BARRICADE ONLY R11-4 (48"x30") WITH 2 FLASHING AMBER LIGHTS
- 5. ROAD CLOSED PROVIDE SIGN ON RIGHT BARRICADE ONLY R11-2 (48"x30") WITH 2 FLASHING AMBER LIGHTS
- 6. ROAD CLOSED AHEAD W20-3 (48"x48") WITH FLASHING AMBER LIGHT
- 7. SIDEWALK CLOSED R11-1101 (24"x18") MOUNTED ON BARRICADE

• FURNISH AND PLACE IN ACCORDANCE WITH HIGHWAY STANDARD B.L.R. 22-7

**UTILITY CONTACTS**

CITY OF ROCKFORD WATER DIVISION	GREG CASSARO	(815) 987-3084
ROCK RIVER WATER RECLAMATION DISTRICT	DANA L. CARROL	(815) 387-7663
COMCAST	DONNA ZIES	(815) 395-8977
COMED	MIKE LENOX	(815) 490-2869
AT&T	DAVID SAINT GERMAIN	(815) 394-7297
NICOR	SCOTT PUFFER	(815) 873-4914
KENTUCKY DATA LINK	JIM KOSTUCH	(262) 792-7938

HRGREEN  
 1414  
 Rockford  
 IL 61102  
 815/398-1100  
 815/398-1101  
 815/398-1102  
 815/398-1103  
 815/398-1104  
 815/398-1105  
 815/398-1106  
 815/398-1107  
 815/398-1108  
 815/398-1109  
 815/398-1110  
 815/398-1111  
 815/398-1112  
 815/398-1113  
 815/398-1114  
 815/398-1115  
 815/398-1116  
 815/398-1117  
 815/398-1118  
 815/398-1119  
 815/398-1120



USER NAME = whood	DESIGNED - KMA	REVISED -
FILE NAME = 86110077-GEN.dgn	DRAWN - WJH	REVISED -
PLOT SCALE =	CHECKED - RGD	REVISED -
PLOT DATE = 3/23/2012	DATE - 3/26/12	REVISED -

**CITY OF ROCKFORD**

**PIERCE AVENUE OVER NORTHWEST DRAINAGEWAY  
GENERAL NOTES & LIST OF STATE STANDARDS**

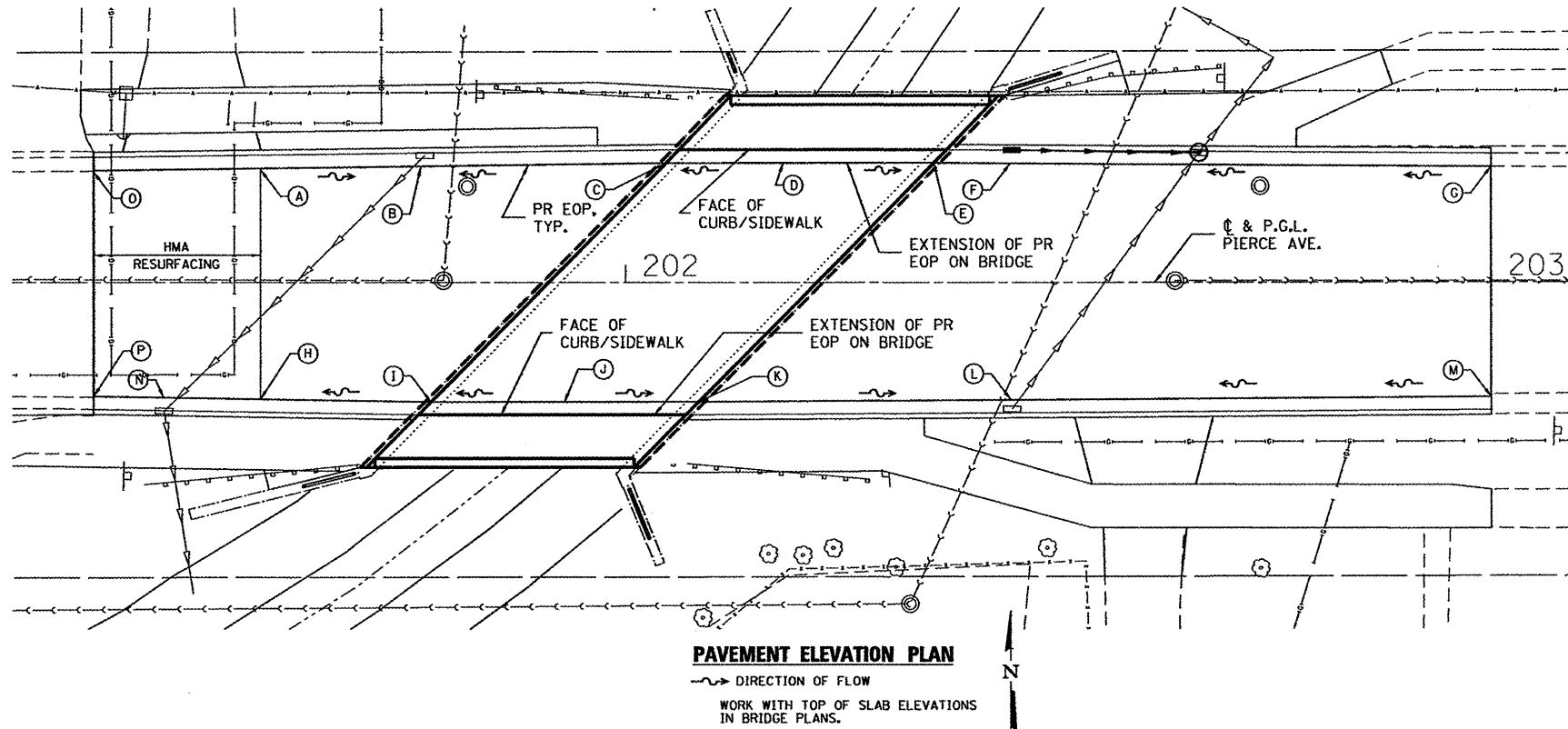
SCALE:	SHEET NO.	OF	SHEETS	STA.	TO STA.

F.A.U. RTE.	SECTION	COUNTY	TOTAL SHEETS	SHEET NO.
5033	11-00581-00-BR	WINNEBAGO	17	2
CONTRACT NO.				
FED. ROAD DIST. NO. 2   ILLINOIS   FED. AID PROJECT				

SUMMARY OF QUANTITIES				URBAN	CONSTRUCTION TYPE CODE
PAY ITEM NUMBER	PAY ITEMS	UNITS	TOTAL QUANTITY	0014	
20201200	REMOVAL AND DISPOSAL OF UNSUITABLE MATERIAL	CU YD	135.0	135.0	
20800150	TRENCH BACKFILL	CU YD	14.0	14.0	
21101615	TOPSOIL FURNISH AND PLACE, 4"	SQ YD	185	185	
25000210	SEEDING, CLASS 2A	ACRE	0.1	0.1	
25000400	NITROGEN FERTILIZER NUTRIENT	POUND	4	4	
25000500	PHOSPHORUS FERTILIZER NUTRIENT	POUND	4	4	
25000600	POTASSIUM FERTILIZER NUTRIENT	POUND	4	4	
25100630	EROSION CONTROL BLANKET	SQ YD	370	370	
28000250	TEMPORARY EROSION CONTROL SEEDING	POUND	5	5	
28000400	PERIMETER EROSION BARRIER	FOOT	306	306	
28000500	INLET AND PIPE PROTECTION	EACH	5	5	
31101200	SUB-BASE GRANULAR MATERIAL, TYPE B 4"	SQ YD	405	405	
35100700	AGGREGATE BASE COURSE, TYPE A, 8"	SQ YD	335	335	
40600100	BITUMINOUS MATERIALS (PRIME COAT)	GALLON	80	80	
40600982	HOT-MIX ASPHALT SURFACE REMOVAL - BUTT JOINT	SQ YD	60	60	
40603000	HOT-MIX ASPHALT BINDER COURSE, 1L-12.5, N50	TON	50	50	
40603310	HOT-MIX ASPHALT SURFACE COURSE, MIX "C", N50	TON	35	35	
42300200	PORTLAND CEMENT CONCRETE DRIVEWAY PAVEMENT, 6 INCH	SQ YD	25	25	
42400200	PORTLAND CEMENT CONCRETE SIDEWALK 5 INCH	SQ FT	1,475	1,475	
44000100	PAVEMENT REMOVAL	SQ YD	330	330	
44000200	DRIVEWAY PAVEMENT REMOVAL	SQ YD	35	35.0	
44000500	COMBINATION CURB AND GUTTER REMOVAL	FOOT	262	262	
44000600	SIDEWALK REMOVAL	SQ FT	846	846	
50101500	REMOVAL OF EXISTING SUPERSTRUCTURES	EACH	1	1	
50200100	STRUCTURE EXCAVATION	CU YD	66.0	66.0	
50300255	CONCRETE SUPERSTRUCTURE	CU YD	83.7	83.7	
50300260	BRIDGE DECK GROOVING	SQ YD	98	98	
50300300	PROTECTIVE COAT	SQ YD	162	162	
50800205	REINFORCEMENT BARS, EPOXY COATED	POUND	19,460	19,460	
50901720	BICYCLE RAILING	FOOT	24	24	
50901750	PARAPET RAILING	FOOT	58	58	
51500100	NAME PLATES	EACH	1	1	
56103000	DUCTILE IRON WATER MAIN 6"	FOOT	58	58	
59000200	EPOXY CRACK INJECTION	FOOT	24	24	
60221200	MANHOLES, TYPE A, 5'-DIAMETER, TYPE 3 FRAME AND GRATE	EACH	1	1	
60235700	INLETS, TYPE A, TYPE 3 FRAME AND GRATE	EACH	1	1	
60300105	FRAMES AND GRATES TO BE ADJUSTED	EACH	3	3	
60300305	FRAMES AND LIDS TO BE ADJUSTED	EACH	4	4	
60500060	REMOVING INLETS	EACH	1	1	
60604400	COMBINATION CONCRETE CURB AND GUTTER, TYPE B - 6.18	FOOT	260	260	
63200310	GUARDRAIL REMOVAL	FOOT	100	100	
67000400	ENGINEER'S FIELD OFFICE, TYPE A	CAL MO	3	3	
67100100	MOBILIZATION	L SUM	1	1	
70300100	SHORT TERM PAVEMENT MARKING	FOOT	325	325	
78005110	EPOXY PAVEMENT MARKING - LINE 4"	FOOT	325	325	
X2070304	POROUS GRANULAR EMBANKMENT, SPECIAL	CU YD	15.8	15.8	
X4021000	TEMPORARY ACCESS (PRIVATE ENTRANCE)	EACH	2	2	

SUMMARY OF QUANTITIES				URBAN	CONSTRUCTION TYPE CODE
PAY ITEM NUMBER	PAY ITEMS	UNITS	TOTAL QUANTITY	0014	
X7010216	TRAFFIC CONTROL AND PROTECTION, SPECIAL	L SUM	1	1	
Z0001900	ASBESTOS BEARING PAD REMOVAL	EACH	26	26	
Z0004522	HOT-MIX ASPHALT DRIVEWAY PAVEMENT, 6"	SQ YD	10	10	
Z0012754	STRUCTURAL REPAIR OF CONCRETE (DEPTH EQUAL TO OR LESS THAN 5 INCHES)	SQ FT	40	40	
Z0012755	STRUCTURAL REPAIR OF CONCRETE (DEPTH GREATER THAN 5 INCHES)	SQ FT	75	75	
Z0013798	CONSTRUCTION LAYOUT	L SUM	1	1	
Z0042002	POROUS GRANULAR EMBANKMENT, SUBGRADE	CU YD	135	135	
Z0056648	STORM SEWERS, TYPE 1, WATER MAIN QUALITY PIPE, 12 INCH	FOOT	20	20	

\* SPECIALTY ITEM  
 ▲ SPECIAL PROVISION PROVIDED



**PAVEMENT ELEVATION PLAN**

~> DIRECTION OF FLOW  
 WORK WITH TOP OF SLAB ELEVATIONS IN BRIDGE PLANS.

**STORM SEWER TAGS**

(SEE PLAN AND PROFILE)

- INLET TA T3 F&G  
 STA. = 202+44.74, 13.61' LT  
 RIM = 734.02  
 INV. = 731.35 E
- 20 LIN FT SS 1 WAT MN 12" @ 0.75%
- MH TA 5' DIA T3 F&G  
 INSTALL IN EXISTING 12" TO 18" RCP STORM SEWER RUN  
 STA. = 202+66.38, 13.44' LT  
 RIM = 734.13  
 INV. = 731.20 W  
 INV. = 730.87 NE EX 18" RCP  
 INV. = 731.07 SW EX 12" RCP  
 COST TO REMOVE PORTIONS OF EXISTING 12" AND 18" RCP STORM SEWER AND RE-INSTALL PIPE SECTIONS AS MANHOLE INVERTS ARE INCLUDED IN THE COST OF THE MANHOLE.

**WATER MAIN TAGS**

(SEE PLAN AND PROFILE)

- 58 LIN FT DIP WATER MAIN 6"
- DUCTILE IRON WATER MAIN FITTINGS, 6", 45.0 DEGREE BEND (COST INCLUDED IN COST OF WATER MAIN)
- EXISTING WATER VALVE IN VAULT

POINT	STATION	OFFSET (FT)	ELEVATION
A	201+57.75	12.91 LT	734.13
B	201+76.76	13.21 LT	734.00
C	202+06.21	13.67 LT	734.12
*D	202+22.10	13.67 LT	734.19
E	202+35.74	13.67 LT	734.09
F	202+44.74	13.61 LT	734.02
G	203+00.00	13.18 LT	734.31
H	201+57.75	13.34 RT	734.17
I	201+77.43	13.67 RT	734.23
*J	201+91.83	13.67 RT	734.28
K	202+08.48	13.66 RT	734.22
L	202+44.74	13.44 RT	734.10
M	203+00.00	13.12 RT	734.44
N	201+46.58	13.18 RT	734.14
O	201+38.42	12.80 LT	734.31
P	201+38.42	13.06 RT	734.27

**PAVEMENT ELEVATION TABLE**

OFFSETS ARE BASED ON C & ROADWAY  
 • COORDINATE WITH BRIDGE PLANS

COMPANY NAME: HRGreen  
 PROJECT CONTACT: Kevin M. Ar Ft  
 CLIENT: City of Rockford  
 FILE NAME: 8610077-Soq.dgn  
 PLOT DRIVER: pefish  
 PEN TABLE: standard-17mm.tbl



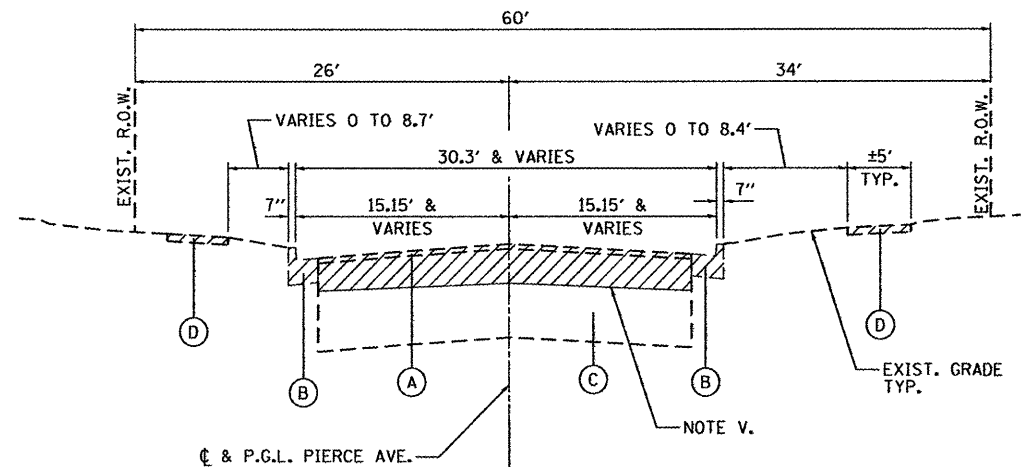
USER NAME = whood	DESIGNED - KMA	REVISED -
FILE NAME = 8610077-Soq.dgn	DRAWN - WJH	REVISED -
PLOT SCALE =	CHECKED - RGD	REVISED -
PLOT DATE = 3/23/2012	DATE - 3/26/12	REVISED -

CITY OF ROCKFORD

**PIERCE AVENUE OVER NORTHWEST DRAINAGEWAY  
 SUMMARY OF QUANTITIES**

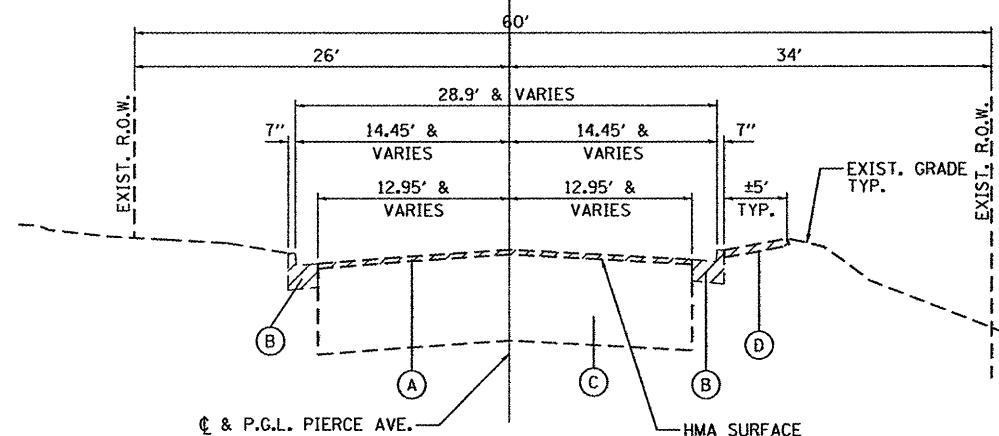
SCALE: SHEET NO. OF SHEETS STA. TO STA.

F.A.J. RTE. 5033	SECTION 11-00581-00-BR	COUNTY WINNEBAGO	TOTAL SHEETS 17	SHEET NO. 3
FED. ROAD DIST. NO. 2 ILLINOIS FED. AID PROJECT			CONTRACT NO.	



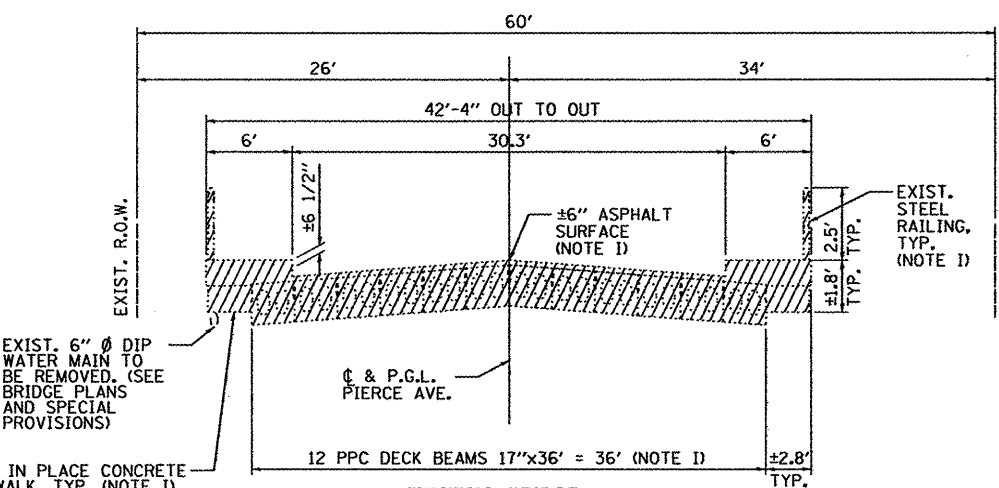
**EXISTING APPROACH ROADWAY  
TYPICAL SECTION**

STA. 201+57.75 TO STA. 201+89.67  
STA. 202+23.51 TO STA. 203+00

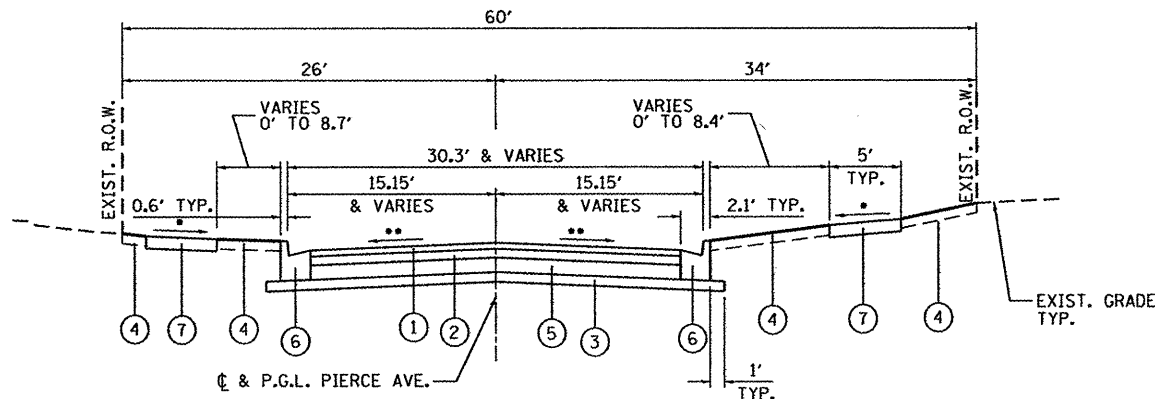


**EXISTING APPROACH ROADWAY  
TYPICAL SECTION**

STA. 201+38.42 TO STA. 201+57.75



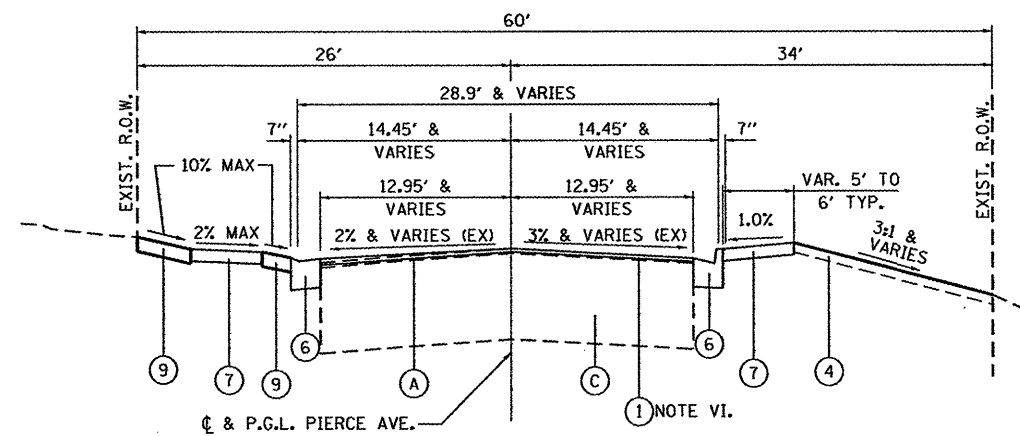
**EXISTING BRIDGE  
TYPICAL SECTION**



**PROPOSED APPROACH ROADWAY  
TYPICAL SECTION**

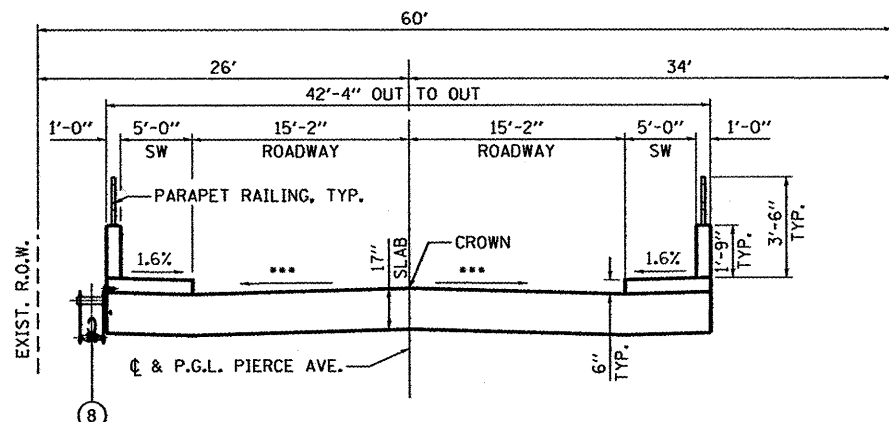
STA. 201+57.75 TO STA. 201+90.38  
STA. 202+22.80 TO STA. 203+00

- 1.5% & VARIES (NOTE IV) 2% MAX.
- 1.5% & VARIES (NOTE ID)



**PROPOSED APPROACH ROADWAY  
TYPICAL SECTION**

STA. 201+38.42 TO STA. 201+57.75



**PROPOSED BRIDGE  
TYPICAL SECTION**

STA. 201+90.38 TO STA. 202+22.80  
••• 3/16"/' & VARIES (NOTE ID)

**NOTES**

- I. COST FOR REMOVAL INCLUDED IN THE ITEM "REMOVAL OF EXISTING SUPERSTRUCTURES"
- II. SEE PAVEMENT ELEVATION DETAIL ON SHEET 3 AND THE CROSS SECTIONS.
- III. SEE STRIPING, EROSION CONTROL & RESTORATION PLAN FOR LIMITS
- IV. SEE CROSS SECTIONS
- V. COORDINATE PAVEMENT REMOVAL DEPTH WITH PROPOSED PAVEMENT SECTION
- VI. THICKNESS VARIES 1 1/2" TO 3".

**EXISTING LEGEND**

- (A) EXIST. HMA SURFACE (THICKNESS ±6")
- (B) EXIST. COMB. CC&G TB6.18
- (C) EXIST. AGGREGATE BASE (THICKNESS ± 36")
- (D) EXIST. PCC SIDEWALK

**PROPOSED LEGEND**

- (1) HOT-MIX ASPHALT SURFACE COURSE MIX "C" N50 @ 1 1/2"
- (2) HOT-MIX ASPHALT BINDER COURSE IL - 12.5, N50 @ 2 1/2"
- (3) SUBBASE GRANULAR MATERIAL, TYPE B 4"
- (4) TOPSOIL FURNISH & PLACE 4" WITH SEEDING CLASS 2A (NOTE III)
- (5) AGGREGATE BASE COURSE, TYPE A 8"
- (6) COMBINATION CONCRETE CURB AND GUTTER, TYPE B-6.18
- (7) PORTLAND CEMENT CONCRETE SIDEWALK, 5"
- (8) DIP WATER MAIN, 6" WITH NEW HANGERS (SEE BRIDGE PLANS AND SPECIAL PROVISIONS)

INDICATES ITEMS TO BE REMOVED

HOT-MIX ASPHALT MIXTURE REQUIREMENTS		
MIXTURE USE	SURFACE	BINDER
PG:	PG 64-22	PG 64-22
DESIGN AIR VOIDS	3.0 @ N50	3.0 @ N50
MIXTURE COMPOSITION (GRADIATION MIXTURE)	IL 9.5 OR 12.5	IL 9.5 OR 12.5
FRICITION AGGREGATE	C	N/A
20 YEAR ESAL	0.0	0.0
MIX UNIT WEIGHT	112 LBS/SY/IN	

COMPANY NAME: HRGreen  
 PROJECT CONTACT: HRGreen  
 CLIENT: City of Rockford  
 DATE PLOTTED: 3/23/2012 10:05 AM  
 FILE NAME: 0610077-1.dgn  
 PLOT DRIVER: pdlcht  
 PEN TABLE: srtender-trans.tbl



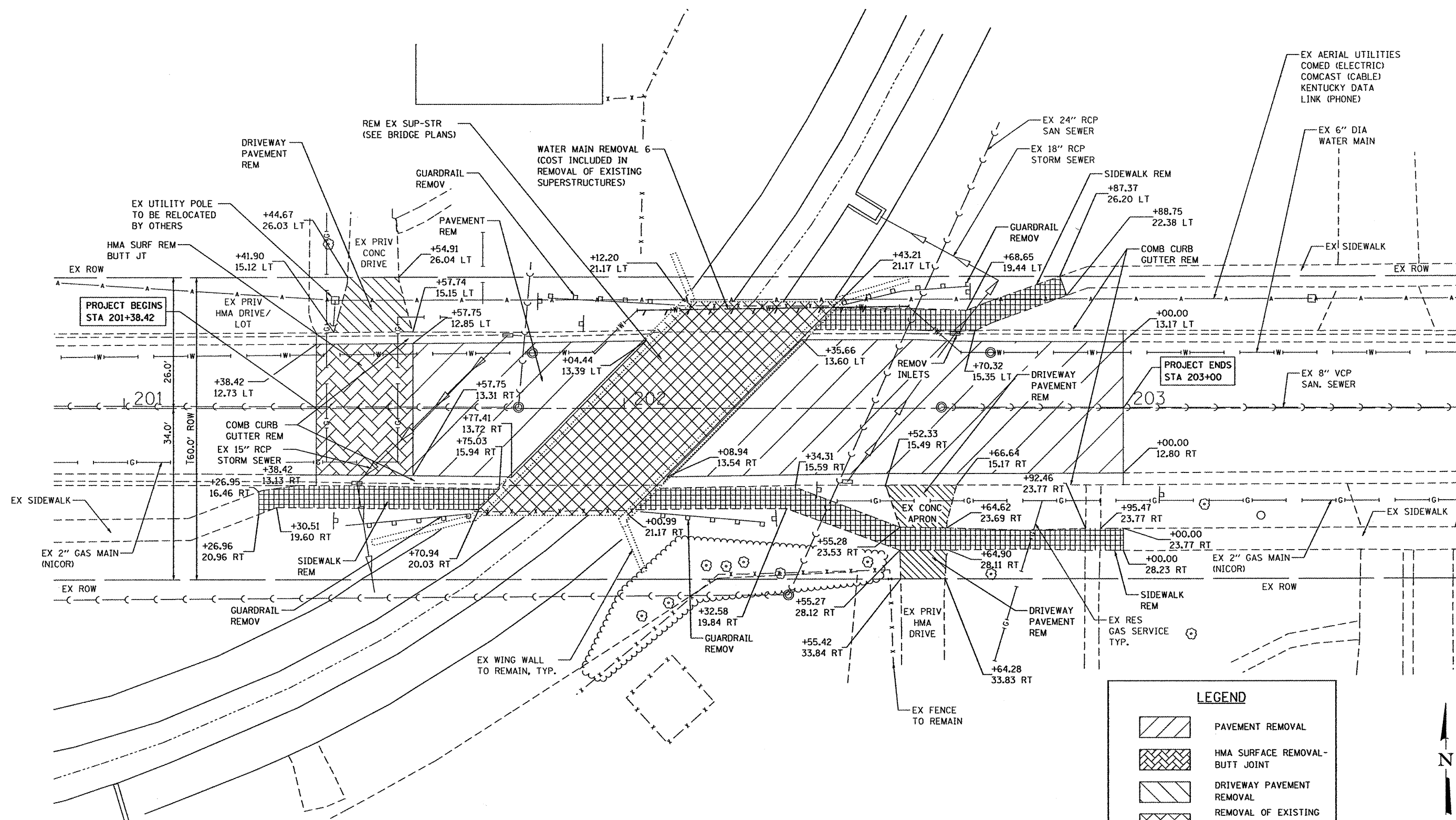
USER NAME = whoad	DESIGNED - KMA	REVISED -
FILE NAME = 06110077-1.dgn	DRAWN - WJH	REVISED -
PLOT SCALE =	CHECKED - RGD	REVISED -
PLOT DATE = 3/23/2012	DATE - 3/26/12	REVISED -

**CITY OF ROCKFORD**

**PIERCE AVENUE OVER NORTHWEST DRAINAGEWAY  
TYPICAL SECTIONS**

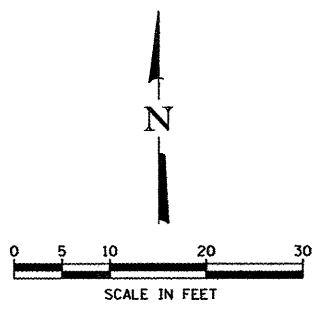
SCALE: SHEET NO. OF SHEETS STA. TO STA.

F.A.U. RTE. 5033	SECTION 11-00581-00-BR	COUNTY WINNEBAGO	TOTAL SHEETS 17	SHEET NO. 4
CONTRACT NO.				
FED. ROAD DIST. NO. 2 ILLINOIS FED. AID PROJECT				



**LEGEND**

- PAVEMENT REMOVAL
- HMA SURFACE REMOVAL - BUTT JOINT
- DRIVEWAY PAVEMENT REMOVAL
- REMOVAL OF EXISTING SUPERSTRUCTURES (SEE BRIDGE PLANS)
- SIDEWALK REMOVAL



COMPANY NAME: HRGreen  
 PROJECT CONTACT: KMA  
 CLIENT: City of Rockford  
 DATE PLOTTED: 3/23/2012 11:51:11 AM  
 FILE NAME: 0610077-Rem.dgn  
 PLOT DRIVER: pdf.plt  
 PEN TABLE: standard-trans.tbl

**HRGreen**  
 HRGreen.com  
 Works Professional Design Firm  
 #104-001322

USER NAME = whood	DESIGNED - KMA	REVISED -
FILE NAME = 06110077-Rem.dgn	DRAWN - WJH	REVISED -
PLOT SCALE =	CHECKED - RGD	REVISED -
PLOT DATE = 3/23/2012	DATE - 3/26/12	REVISED -

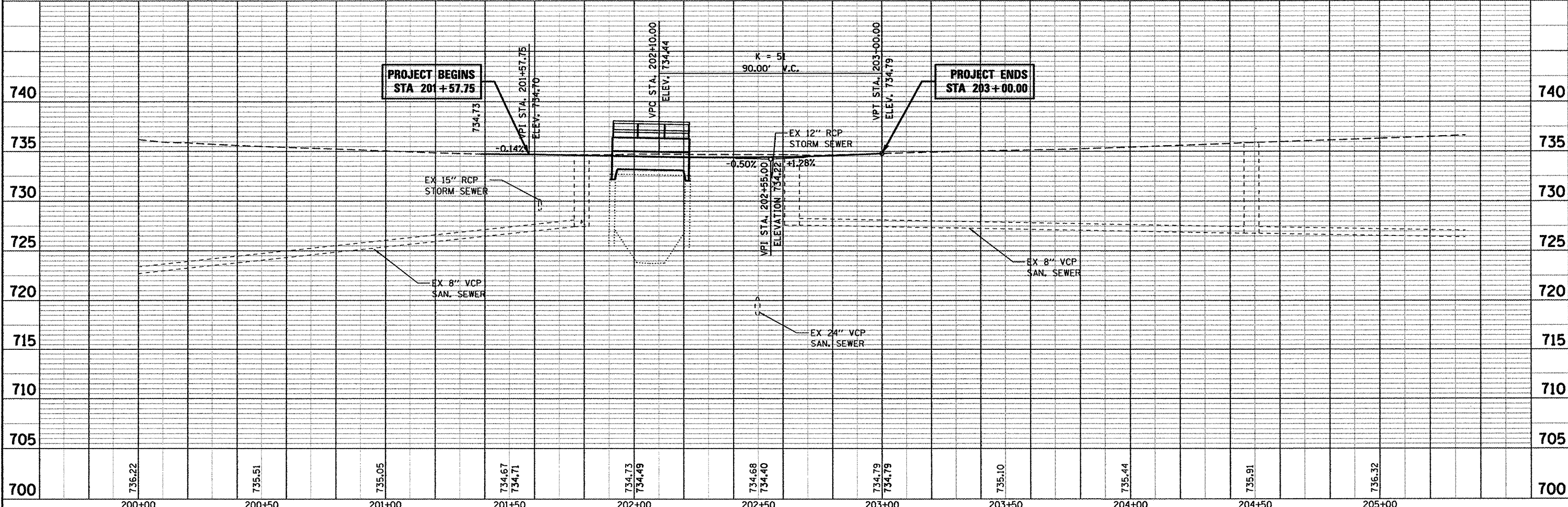
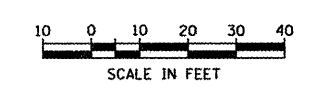
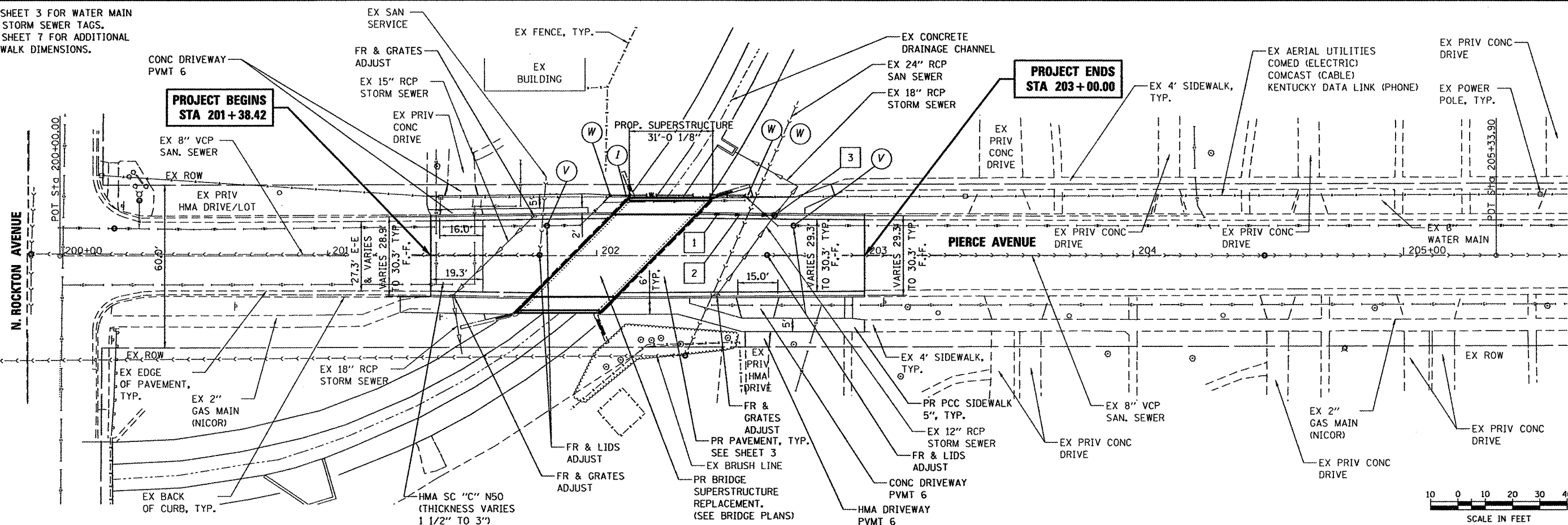
**CITY OF ROCKFORD**

**PIERCE AVENUE OVER NORTHWEST DRAINAGEWAY  
REMOVAL PLAN**

SCALE: SHEET NO. OF SHEETS STA. TO STA.

F.A.I. RTE.	SECTION	COUNTY	TOTAL SHEETS	SHEET NO.
5033	11-00581-00-BR	WINNEBAGO	17	5
CONTRACT NO.				
FED. ROAD DIST. NO. 2 [ILLINOIS] FED. AID PROJECT				

NOTE 1. SEE SHEET 3 FOR WATER MAIN AND STORM SEWER TAGS.  
 2. SEE SHEET 7 FOR ADDITIONAL SIDEWALK DIMENSIONS.



COMPANY NAME: HRGreen  
 PROJECT CONTACT: Kevin M. J...  
 CLIENT: City of Rockford  
 DRAWN BY: J...  
 FILE NAME: 8610077-prp.dgn  
 PLOT DRIVER: pldrvr  
 PEN TABLE: standard-trans.tbl

HRGreen.com  
 1144 Professional Design Firm  
 # 114-001522

USER NAME = whood	DESIGNED - KMA	REVISED -
FILE NAME = 86110077-prp.dgn	DRAWN - WJH	REVISED -
PLOT SCALE =	CHECKED - RGD	REVISED -
PLOT DATE = 3/23/2012	DATE - 3/23/2012	REVISED -

CITY OF ROCKFORD

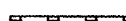



PIERCE AVENUE OVER NORTHWEST DRAINAGEWAY  
 PLAN & PROFILE

F.A.U. RTE. 5033	SECTION 11-00581-00-BR	COUNTY WINNEBAGO	TOTAL SHEETS 17	SHEET NO. 6
CONTRACT NO.				
FED. ROAD DIST. NO. 2 ILLINOIS FED. AID PROJECT				

**EROSION CONTROL NOTES**

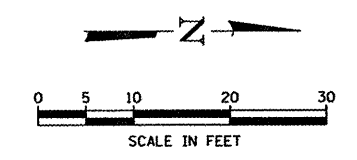
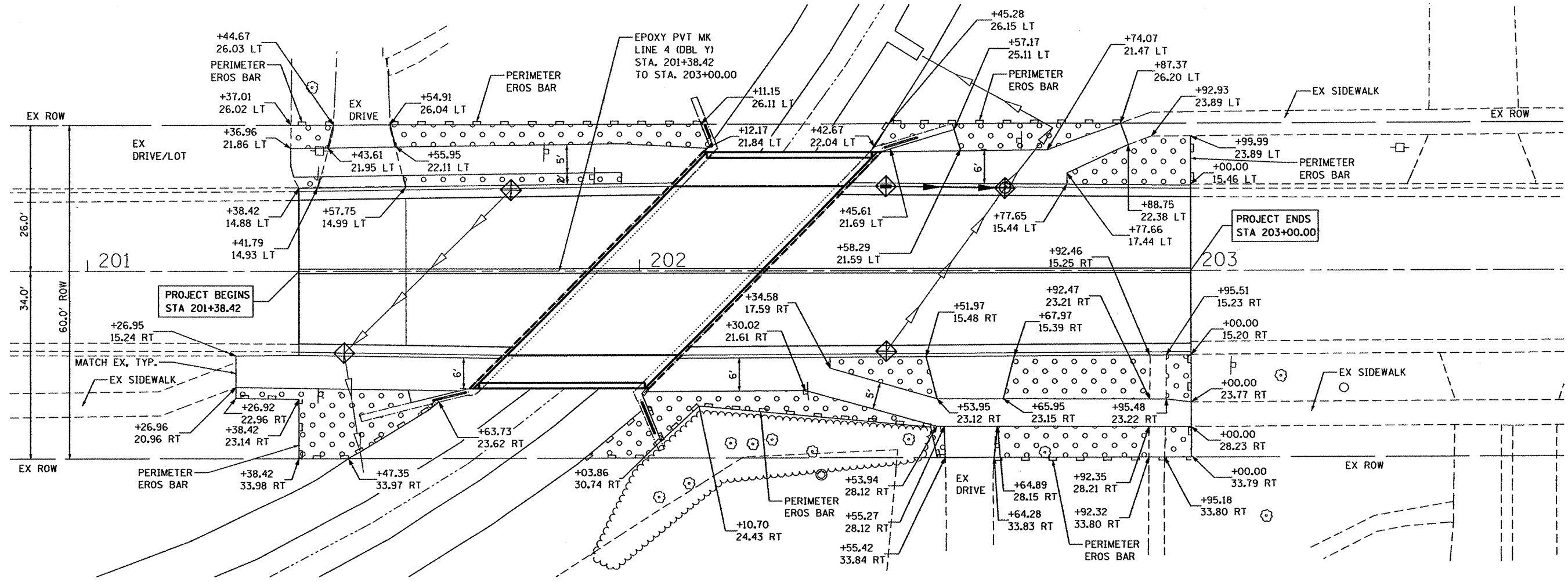
1. THE CONTRACTOR WILL BE REQUIRED TO IMPLEMENT AND MAINTAIN EROSION CONTROL MEASURES IMMEDIATELY AFTER STRIPPING OF EXISTING VEGETATION.
2. STOCKPILES OF SOIL AND OTHER BUILDING MATERIALS TO REMAIN IN PLACE MORE THAN THREE (3) DAYS SHALL BE FURNISHED WITH EROSION AND SEDIMENT CONTROL MEASURES (I.E. PERIMETER SILT FENCE), STOCKPILES TO REMAIN IN PLACE FOR 14 DAYS OR MORE SHALL RECEIVE TEMPORARY SEEDING.
3. THE CONTRACTOR SHALL TAKE ALL PRECAUTIONS TO PREVENT POLLUTION OF STORM WATER AND SHALL FOLLOW IEPA REGULATIONS & IDOT CONSTRUCTION MEMORANDUM NO. 06-60.
4. STABILIZATION MEASURES SHALL BE INITIATED WITHIN 7 DAYS OF CONSTRUCTION ACTIVITY TEMPORARILY OR PERMANENTLY CEASING IN AREAS WHERE IT WILL NOT OCCUR FOR A PERIOD OF 14 OR MORE CALENDAR DAYS.
5. THE SOIL EROSION AND SEDIMENT CONTROL PRACTICES WILL BE INSPECTED WEEKLY AND AFTER 1/2 INCH OF RAIN OR MORE BY THE INDIVIDUAL ON SITE IN CHARGE OF SOIL EROSION AND SEDIMENT CONTROL DURING THE CONSTRUCTION OF THE PROJECT.
6. SILT FENCE SHALL BE INSTALLED FOLLOWING THE COMPLETION AND STABILIZATION OF THE STORMWATER FACILITIES AND WILL REMAIN IN PLACE UNTIL THE CONTRIBUTING AREA IS STABILIZED.
7. ALL ADJACENT STREETS MUST BE KEPT CLEAR OF DEBRIS, INSPECTED DAILY AND CLEANED WHEN NECESSARY OR AS DIRECTED BY THE ENGINEER.
8. ALL SOIL EROSION AND SEDIMENT CONTROL PRACTICES ARE REFERENCED FROM THE ILLINOIS URBAN MANUAL.
9. THE CONTRACTOR WILL BE REQUIRED TO HAVE A DESIGNATED WASHOUT AREA FOR ALL CONCRETE POURS.

**LEGEND**

	PERIMETER EROSION BARRIER		FINAL RESTORATION OF DISTURBED AREAS - TOPSOIL FURNISH AND PLACE, 4" - SEEDING CLASS 2A - EROSION CONTROL BLANKET
	EXISTING R.O.W.		INLET AND PIPE PROTECTION

**TEMPORARY EROSION CONTROL SEQUENCE OF CONSTRUCTION**

1. ESTABLISH TEMPORARY EROSION CONTROL MEASURES AND ERECT PERIMETER EROSION BARRIER ALONG SITE BOUNDARIES PRIOR TO EARTHWORK.
2. INSTALL TEMPORARY EROSION CONTROL SEEDING.



HRGREEN  
 COMPANY NAME: Kevin M. Art  
 PROJECT CONTACT: 312.221.1984  
 CLIENT: 312.221.1984  
 FILE NAME: 8610077-Erodgn  
 PLOT DRIVER: pdfplot  
 PEN TABLE: standard-trans.tbl


**HRGreen.com**  
 Whole Professional Design Firm  
 # 184-001322

USER NAME = whood	DESIGNED - KMA	REVISED -
FILE NAME = 8610077-Erodgn	DRAWN - WJH	REVISED -
PLOT SCALE =	CHECKED - RGD	REVISED -
PLOT DATE = 3/23/2012	DATE - 3/26/12	REVISED -

**CITY OF ROCKFORD**

**PIERCE AVENUE OVER NORTHWEST DRAINAGWAY**  
**EROSION CONTROL, PAVEMENT MARKING & RESTORATION PLAN**

F.A.U. RTE. 5033	SECTION 11-00581-00-BR	COUNTY WINNEBAGO	TOTAL SHEETS 17	SHEET NO. 7
FED. ROAD DIST. NO. 2 ILLINOIS FED. AID PROJECT			CONTRACT NO. 17	

SCALE: SHEET NO. OF SHEETS STA. TO STA.

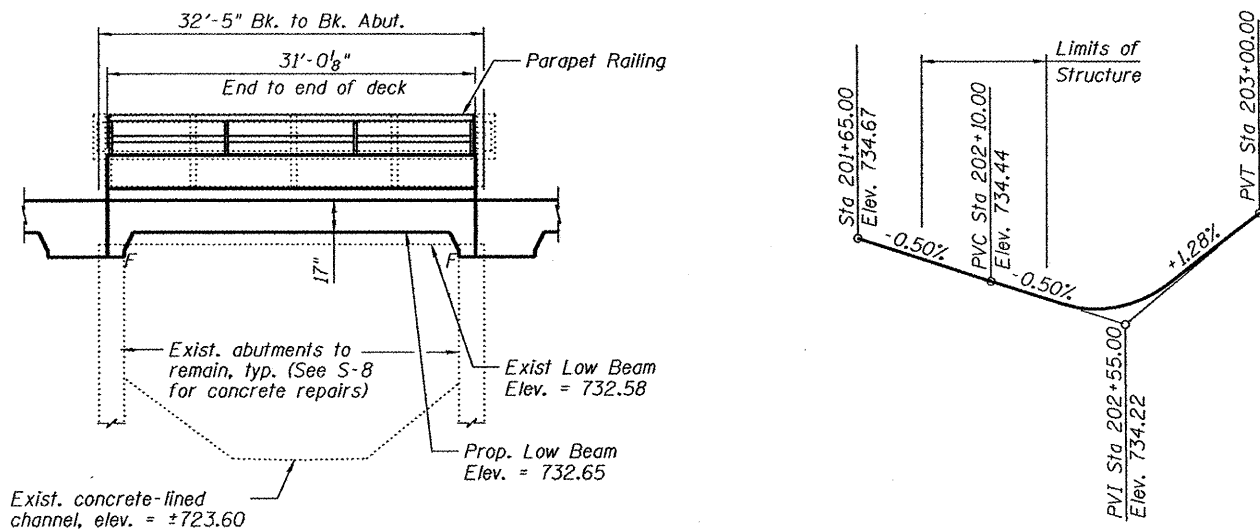
**Benchmark:**  
 Railroad spike in south face of the first power pole east of the Northwest Drainageway and on the north side of Pierce Ave.  
 Elevation=736.96 NAVD88

**Existing Structure:** S.N. 101-6006 The existing structure was built in 1962 by the City of Rockford as a single-span precast, prestressed concrete deck beam bridge supported on closed abutments. The bridge is 32'-5" Bk. to Bk. abutments with an out-to-out width of 42'-4". The design loading used was HS 20 according to the bridge inventory. The scope of improvements includes removal of the existing precast, prestressed concrete deck beam superstructure and placement of a reinforced concrete slab superstructure. The existing abutments and wingwalls are to remain. The project will be constructed under a temporary closure of Pierce Avenue.

**Salvage:** Abutments and wingwalls to remain.

**NORTHWEST DRAINAGEWAY**  
 RE-BUILT 20... BY  
 CITY OF ROCKFORD  
 SEC 11-00581-00-BR  
 F.A.R.T. 5033 STA. 202+06.59  
 STRUCTURE NO. 101-6006  
 LOADING HS20-44

**NAME PLATE**  
 See Std. 515001



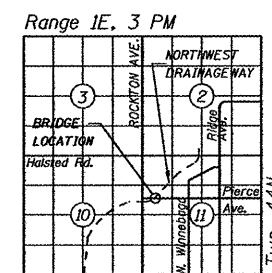
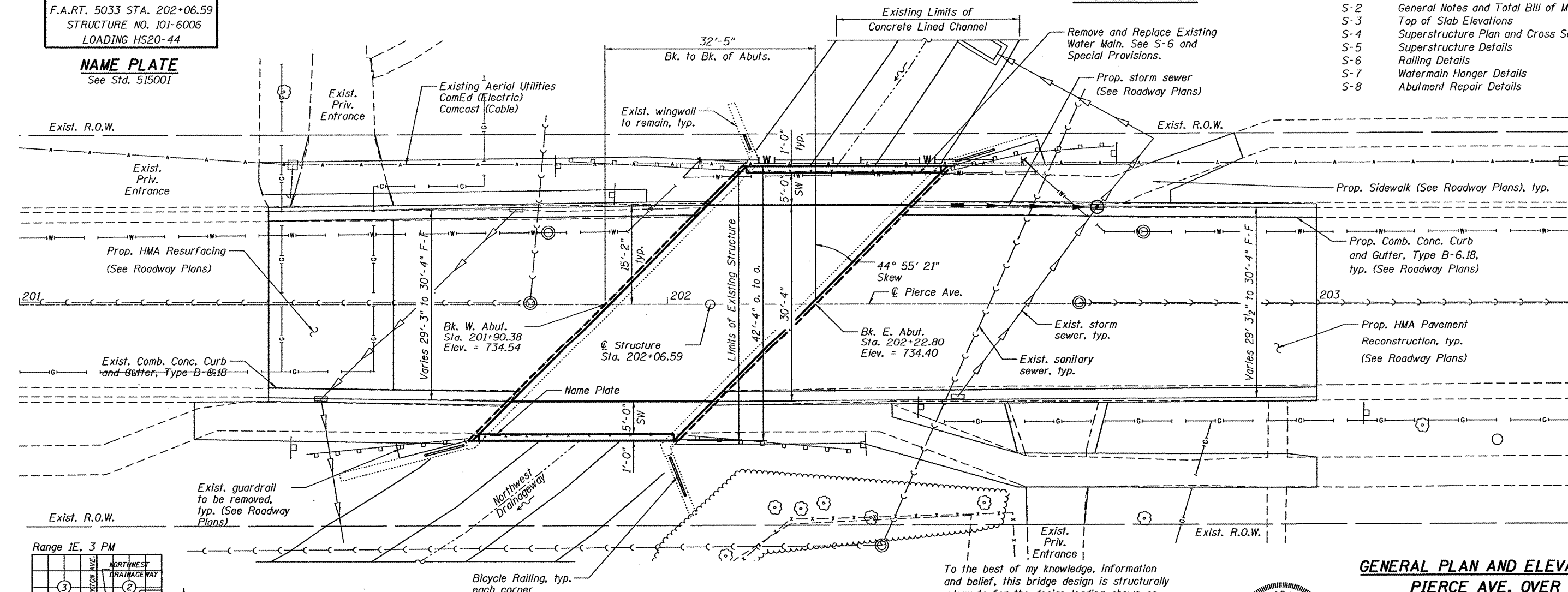
**LOADING HS20-44**  
 No future wearing surface allowed  
**DESIGN SPECIFICATIONS**  
 2002 AASHTO Standard Specifications

**DESIGN STRESSES**  
**FIELD UNITS**  
 $f'_c = 3,500$  psi  
 $f_y = 60,000$  psi (Reinforcement)  
 $f_y = 50,000$  psi (M270 Grade 50)

**SEISMIC DATA**  
 Seismic Performance Category (SPC) = A  
 Bedrock Acceleration Coefficient (A) = 4%  
 Site Coefficient (S) = 1.0

**INDEX OF SHEETS**

- S-1 General Plan and Elevation
- S-2 General Notes and Total Bill of Materials
- S-3 Top of Slab Elevations
- S-4 Superstructure Plan and Cross Section
- S-5 Superstructure Details
- S-6 Railing Details
- S-7 Watermain Hanger Details
- S-8 Abutment Repair Details



**LOCATION SKETCH**

To the best of my knowledge, information and belief, this bridge design is structurally adequate for the design loading shown on the plans. The design is an economical one for the style of structure and complies with requirements of the current "AASHTO Standard Specifications for Highway Bridges".

*Robert J. Green*  
 Structural Engineer Expires: 11/30/2012  
 HR Green



**GENERAL PLAN AND ELEVATION**  
**PIERCE AVE. OVER**  
**NORTHWEST DRAINAGE WAY**  
**SEC. 11-00581-00-BR**  
**WINNEBAGO COUNTY**  
**STA. 202+06.59**  
**S.N. 101-6006**

COMPANY NAME: HRGreen  
 PROJECT CONTACT: Kevin M. Arff  
 CLIENT: City of Rockford  
 DATE PLOTTED: 3/23/2012 10:58:29 AM  
 FILE NAME: 8610077-00a.dgn  
 PLOT DRIVER: pdt.plt  
 PEN TABLE: standard-trans.tbl



USER NAME = whood	DESIGNED - JPG	REVISED -
	CHECKED - WJH	REVISED -
PLOT SCALE =	DRAWN - RGD	REVISED -
PLOT DATE = 3/23/2012	CHECKED - 3/26/12	REVISED -

**CITY OF ROCKFORD**

SHEET NO. S-1 OF S-8 SHEETS

F.A. RTE.	SECTION	COUNTY	TOTAL SHEETS	SHEET NO.
5033	11-00581-00-BR	WINNEBAGO	17	8
CONTRACT NO.				
ILLINOIS FED. AID PROJECT				



**GENERAL NOTES:**

Reinforcement bars shall conform to the requirements of ASTM A 706 Gr 60. See Special Provisions.

Reinforcement bars designated (E) shall be epoxy coated.

Plan dimensions and details relative to existing structure are subject to nominal construction variations. The Contractor shall field verify existing dimensions and details affecting new construction and make necessary approved adjustments prior to construction or ordering of materials. Such variations shall not be cause for additional compensation for a change in scope of the work, however, the Contractor will be paid for the quantity actually furnished at the unit price bid for the work.

The Contractor shall make allowance for the deflection of forms, shrinkage and settlement of falsework, in addition to allowance for dead load deflection.

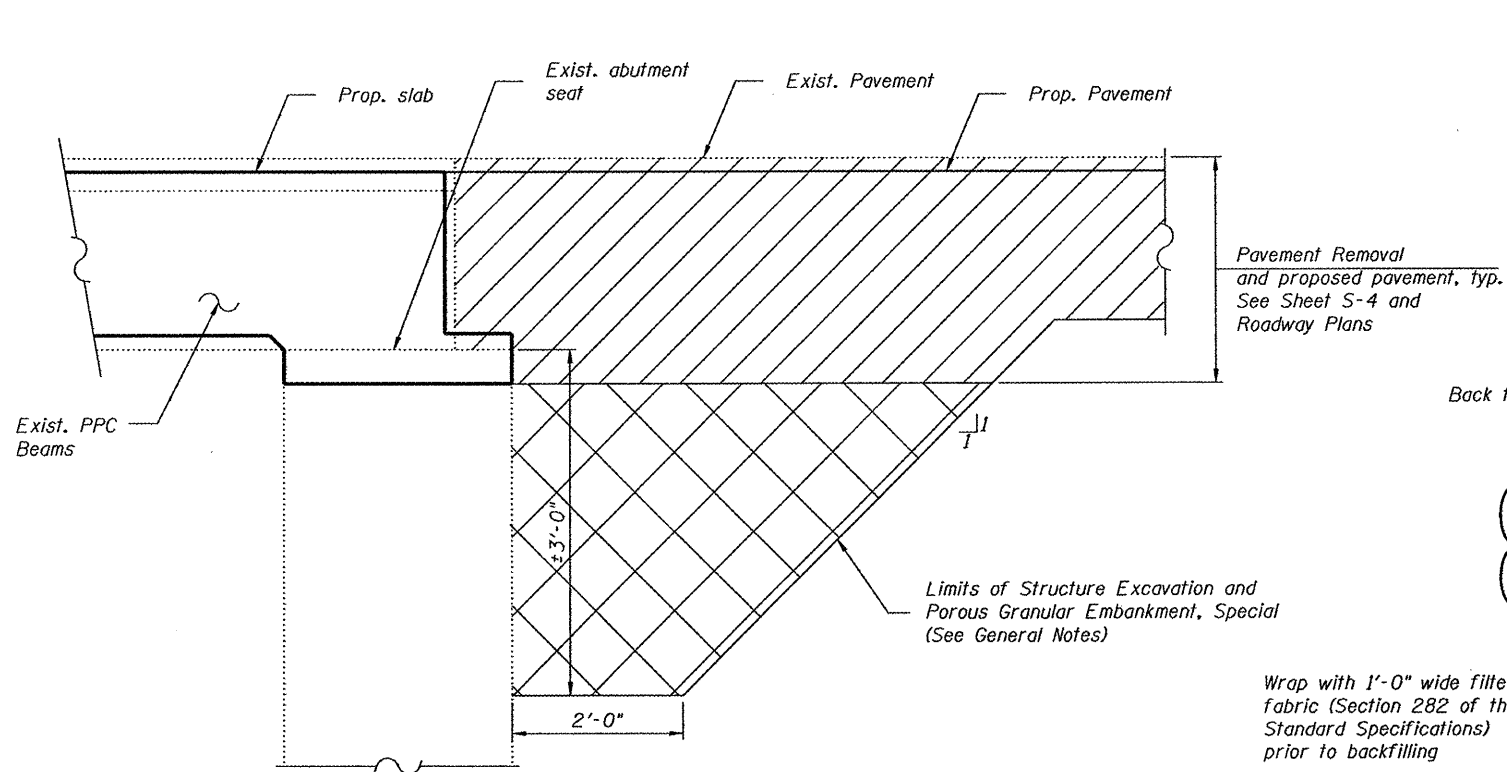
The concrete for bridge decks finished according to Article 503.16(a) of the Standard Specifications shall be placed and compacted parallel to the skew in uniform increments along centerline of bridge. The machine used for finishing shall be set parallel to the skew for striking off and screeding the concrete.

Excavation behind existing abutment walls shall be performed as shown to balance front and back soil pressure before removing the existing superstructure.

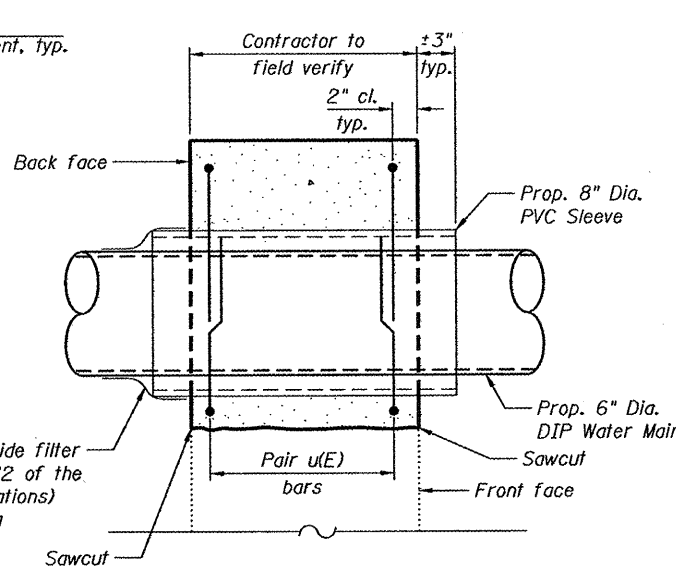
Plans for the existing structure are not available.

**TOTAL BILL OF MATERIAL**

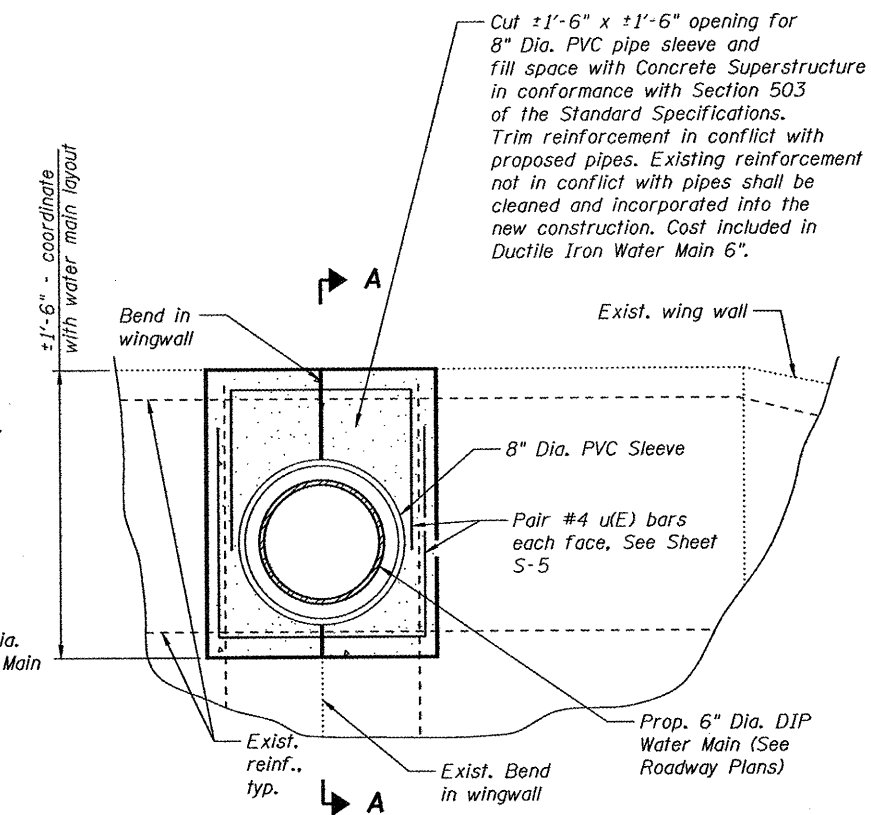
ITEM	UNIT	SUPER	SUB	TOTAL
Removal of Existing Superstructures	Each	1	-	1
Structure Excavation	Cu. Yd.	66.0	-	66.0
Concrete Superstructure	Cu. Yd.	83.7	-	83.7
Bridge Deck Grooving	Sq. Yd.	98	-	98
Protective Coat	Sq. Yd.	162	-	162
Reinforcement Bars, Epoxy Coated	Pound	19,460	-	19,460
Parapet Railing	Foot	58	-	58
Name Plates	Each	1	-	1
Epoxy Crack Injection	Foot	24	-	24
Porous Granular Embankment, Special	Cu. Yd.	15.8	-	15.8
Asbestos Bearing Pad Removal	Each	26	-	26
Structural Repair of Concrete (Depth Less than or Equal to 5")	Sq. Ft.	40	-	40
Structural Repair of Concrete (Depth Greater than 5")	Sq. Ft.	75	-	75



**SECTION THRU ABUTMENT**  
(Horiz. dim. @ Rt. L's)



**SECTION A-A**



**ELEVATION**  
Looking at front face

**WATER MAIN SLEEVE DETAIL**

Work with Abutment Details Sheet S-8. The cost for this work shall be included in the unit price bid for Ductile Iron Water Main 6", unless noted otherwise.

u(E) bars will be paid for as Reinforcement Bars, Epoxy Coated (See Sheet S-5).

PVC sleeve shall conform to Article 1040.03(a) of the Standard Specifications.

COMPANY NAME: HRGreen  
 PROJECT CONTACT: arff  
 CLIENT: City of Rockford  
 DATE PLOTTED: 3/23/2012 11:53:33 AM  
 FILE NAME: 0610077-0pen.dgn  
 PLOT DRIVER: pdf.plt  
 PEN TABLE: standard-trans.tbl

HRGreen.com  
 Illinois Professional Design Firm  
 # 184-001322

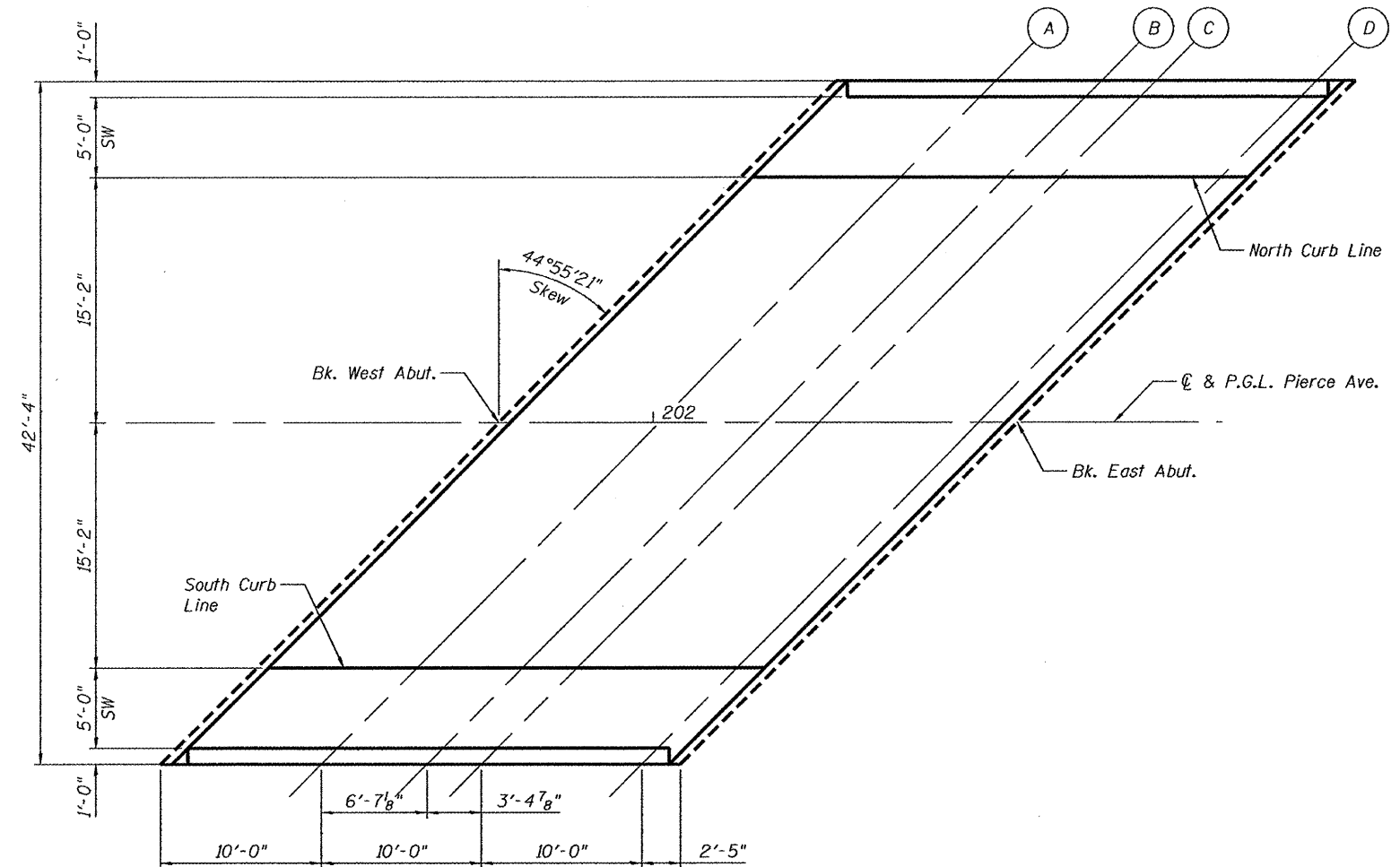
USER NAME = wwood	DESIGNED - KMA	REVISED -
	CHECKED - WJH	REVISED -
PLOT SCALE =	DRAWN - RGD	REVISED -
PLOT DATE = 3/23/2012	CHECKED - 3/26/12	REVISED -

**CITY OF ROCKFORD**

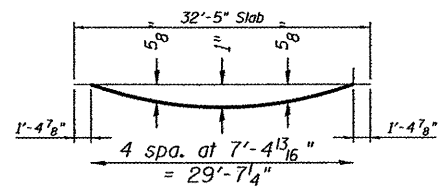
**PIERCE AVENUE OVER NORTHWEST DRAINAGEWAY  
GENERAL NOTES AND TOTAL BILL OF MATERIALS**

SHEET NO. S-2 OF S-8 SHEETS

F.A. RTE.	SECTION	COUNTY	TOTAL SHEETS	SHEET NO.
5033	11-00581-00-BR	WINNEBAGO	17	9
CONTRACT NO.				
ILLINOIS FED. AID PROJECT				



PLAN



**DEAD LOAD DEFLECTION DIAGRAM**

(Includes weight of concrete slab, sidewalk and parapets)

Deflection values include instantaneous deflection as well as estimated deflection at 3 months after the concrete is poured.

**NORTH CURB LINE**

Location	Station	Offset	Theoretical Grade Elevations	Theoretical Grade Elevations Adjusted For Dead Load Deflections
Bk. West Abutment	202+05.51	-15.17	734.12	734.12
A	202+15.51	-15.17	734.16	734.22
B	202+22.10	-15.17	734.19	734.27
C	202+25.51	-15.17	734.16	734.23
D	202+35.51	-15.17	734.09	734.10
Bk. East Abutment	202+37.93	-15.17	734.07	734.07

**CL AND P.G.L.**

Location	Station	Offset	Theoretical Grade Elevations	Theoretical Grade Elevations Adjusted For Dead Load Deflections
Bk. West Abutment	201+90.38	0.00	734.54	734.54
A	202+00.38	0.00	734.49	734.55
B	202+06.97	0.00	734.46	734.54
C	202+10.38	0.00	734.44	734.51
D	202+20.38	0.00	734.40	734.42
Bk. East Abutment	202+22.80	0.00	734.40	734.40

**SOUTH CURB LINE**

Location	Station	Offset	Theoretical Grade Elevations	Theoretical Grade Elevations Adjusted For Dead Load Deflections
Bk. West Abutment	201+75.25	15.17	734.20	734.20
A	201+85.25	15.17	734.23	734.29
B	201+91.83	15.17	734.25	734.33
C	201+95.25	15.17	734.24	734.31
D	202+05.25	15.17	734.20	734.22
Bk. East Abutment	202+07.68	15.17	734.20	734.20

COMPANY NAME: HRGreen  
 PROJECT CONTACT: Art  
 CLIENT: City of Rockford  
 DATE PLOTTED: 3/23/2012 10:53:37 AM  
 FILE NAME: 8610071-1as.dgn  
 PLOT DRIVER: pdfPlot  
 PLOT TABLE: standard-trans.tbl



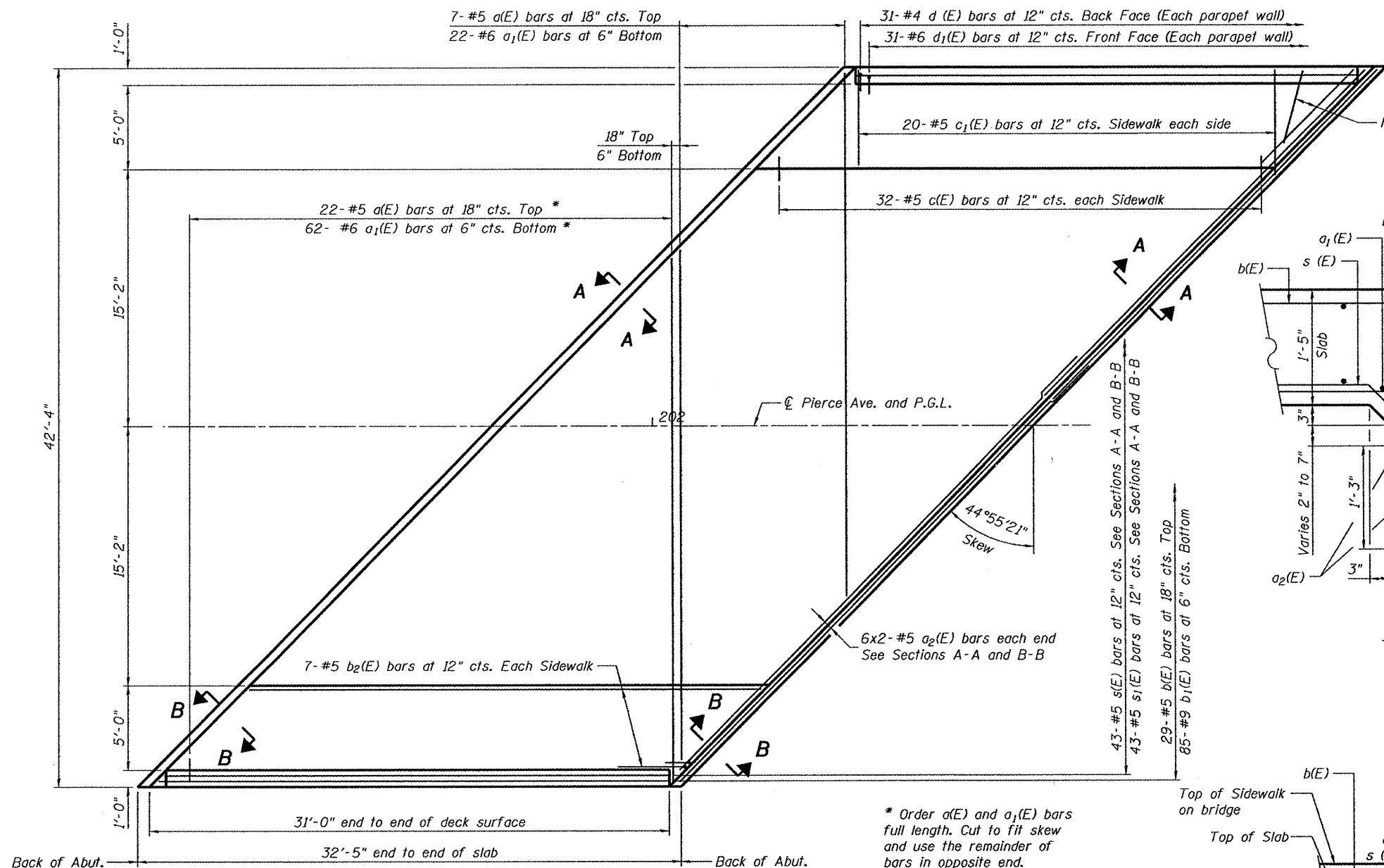
USER NAME = whood	DESIGNED - KMA	REVISED -
PLOT SCALE =	CHECKED - WJH	REVISED -
PLOT DATE = 3/23/2012	DRAWN - RGD	REVISED -
	CHECKED - 3/26/12	REVISED -

CITY OF ROCKFORD

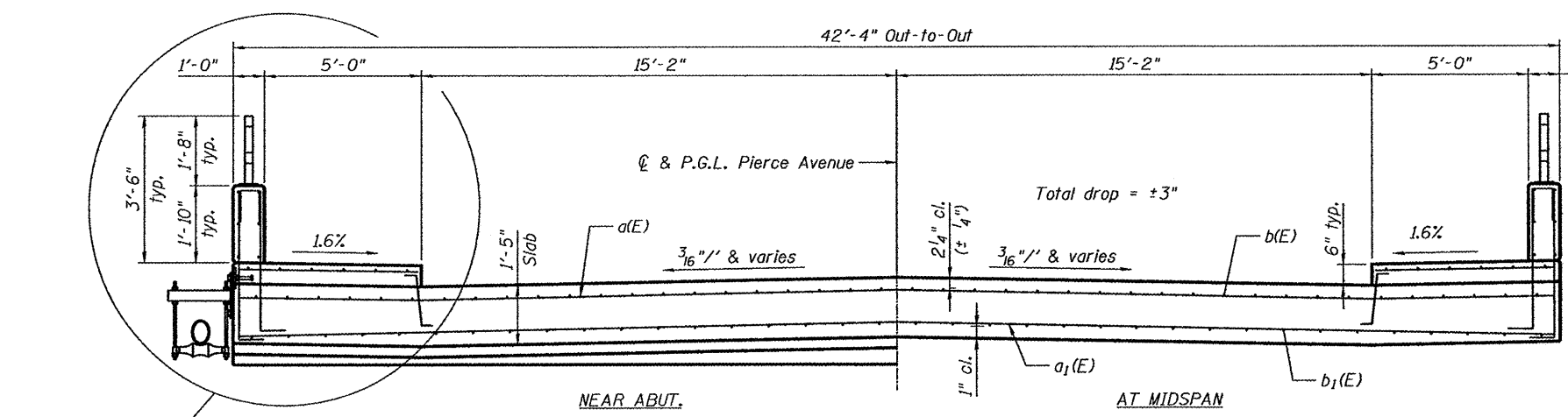
PIERCE AVENUE OVER NORTHWEST DRAINAGEWAY  
 TOP OF SLAB ELEVATIONS

SHEET NO. 5-3 OF 5-8 SHEETS

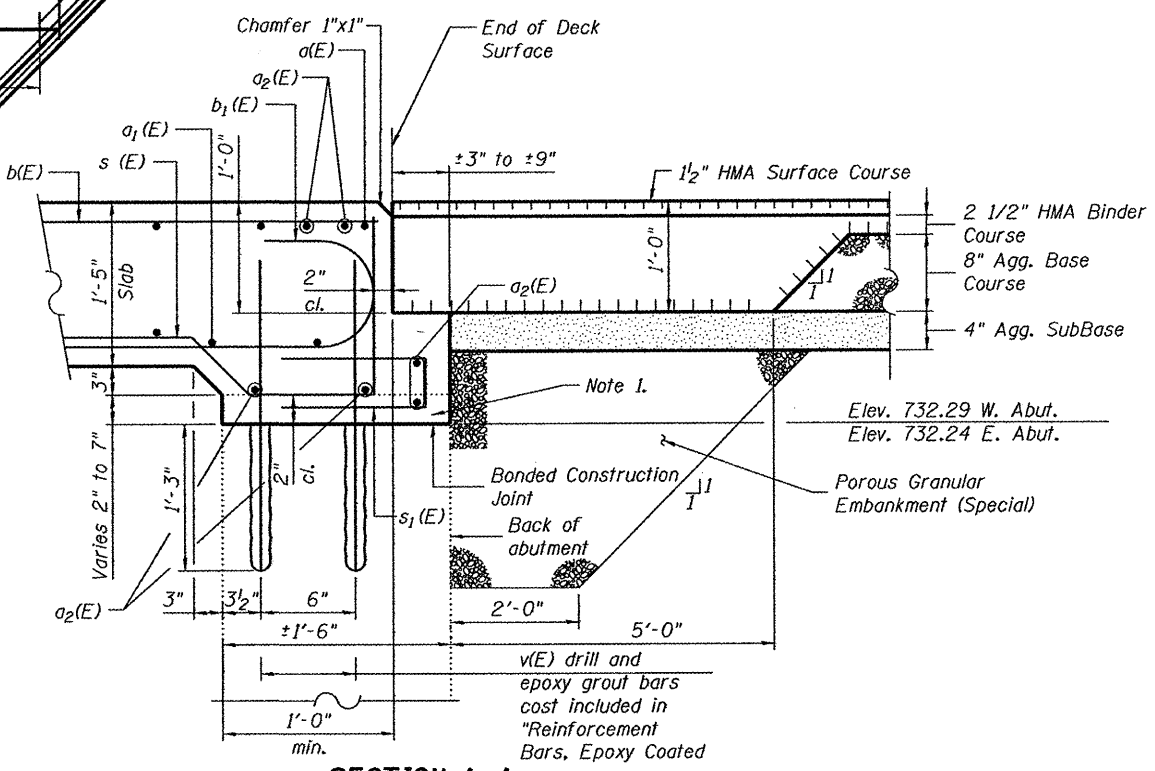
F.A. RTE. 5033	SECTION 11-00581-00-BR	COUNTY WINNEBAGO	TOTAL SHEETS 17	SHEET NO. 10
CONTRACT NO.				
ILLINOIS FED. AID PROJECT				



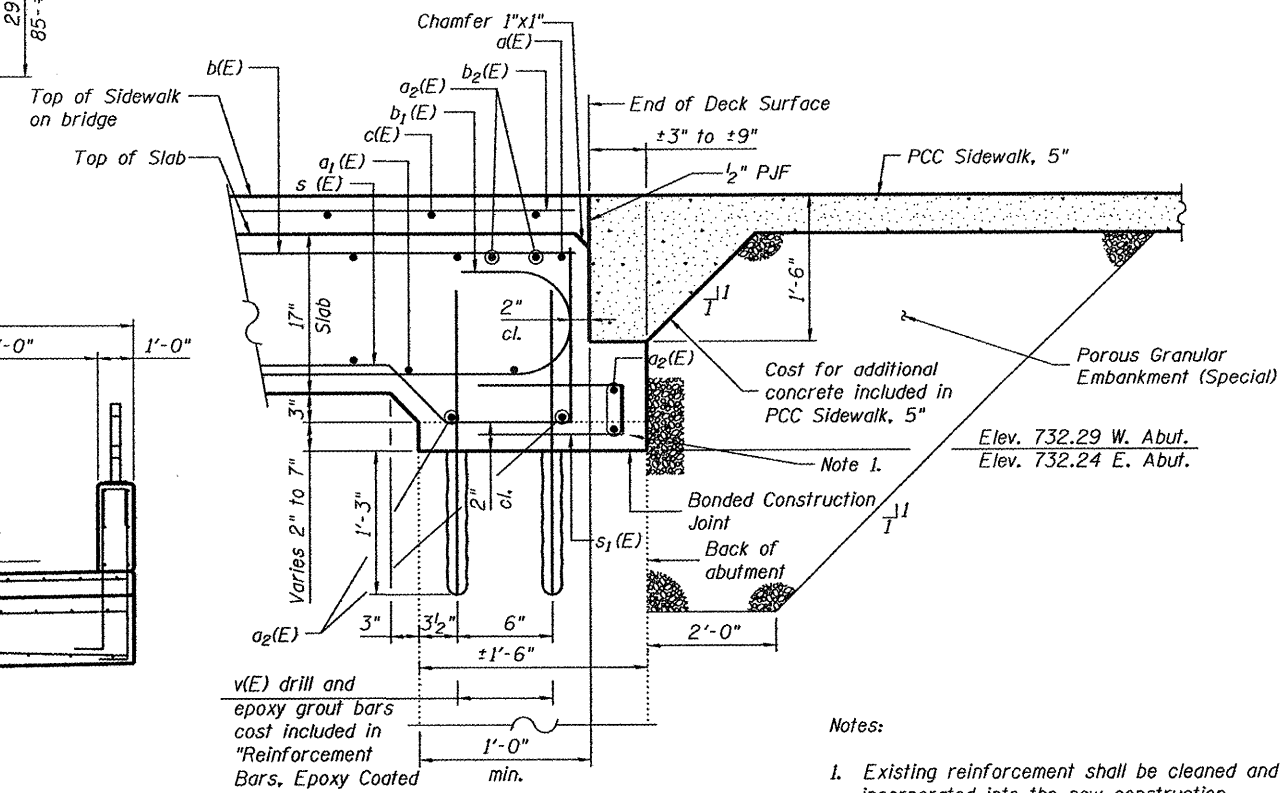
**PLAN** → Z →



**CROSS SECTION**  
(Looking East)



**SECTION A-A**  
Horizontal dimensions at Rt. L's



**SECTION B-B**  
Horizontal dimensions at Rt. L's

Notes:  
1. Existing reinforcement shall be cleaned and incorporated into the new construction. Cost included with Removal of Existing Superstructure.

COMPANY NAME: HRGreen  
PROJECT CONTACT: Kevin M. Arft  
CLIENT: City of Rockford  
DATE PLOTTED: 3/23/2012 11:09:43 AM  
FILE NAME: 86110071-ssp.dgn  
PLOT DRIVER: pdfplot  
PEN TABLE: standard.ctb



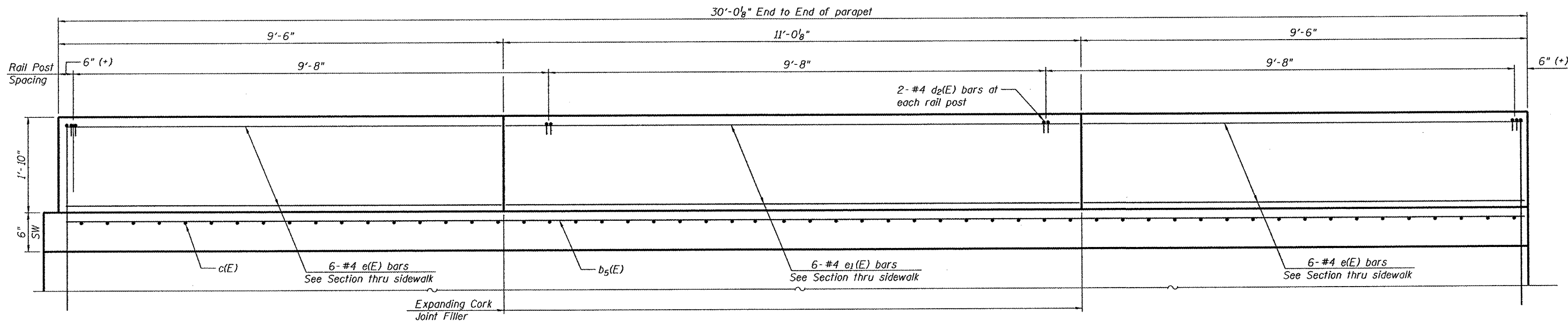
USER NAME = whood	DESIGNED - KMA	REVISED -
PLOT SCALE =	CHECKED - WJH	REVISED -
PLOT DATE = 3/23/2012	DRAWN - RGD	REVISED -
	CHECKED - 3/26/12	REVISED -

CITY OF ROCKFORD

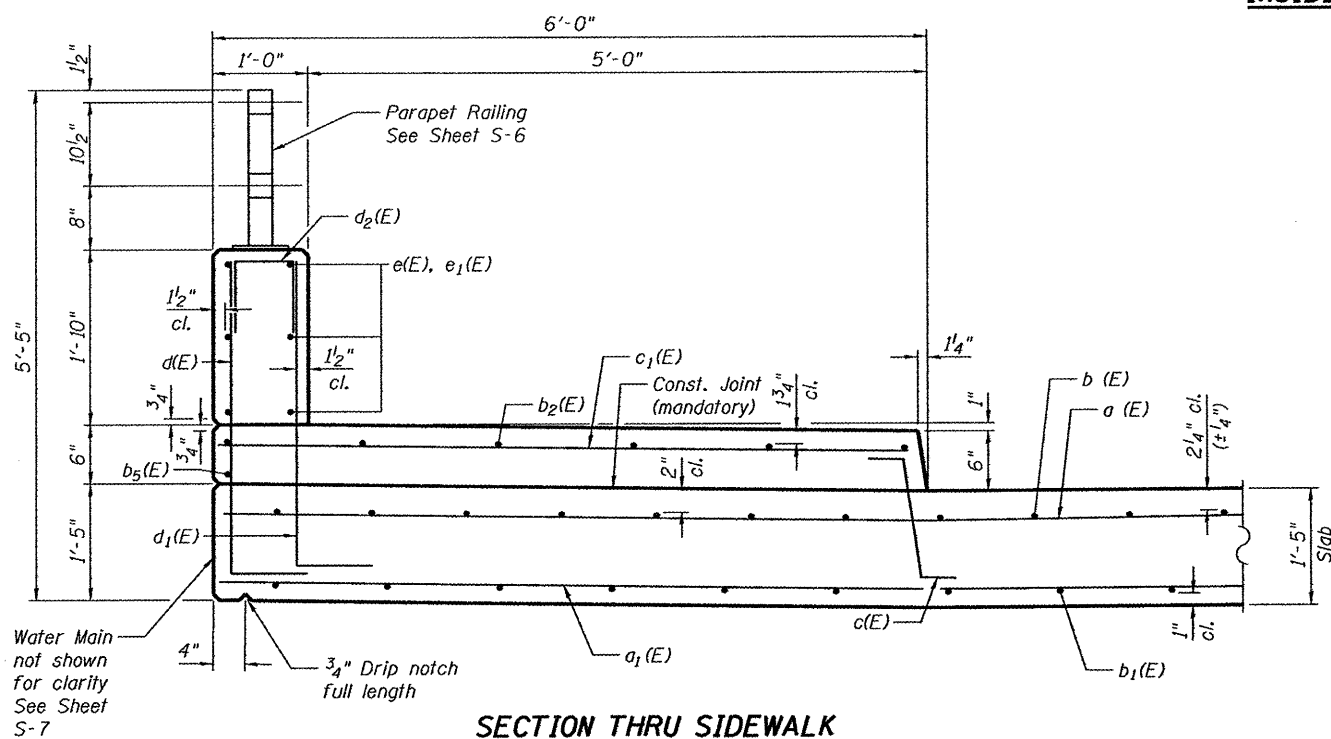
PIERCE AVENUE OVER NORTHWEST DRAINAGEWAY  
SUPERSTRUCTURE PLAN AND CROSS SECTION

F.A. RTE. 5033	SECTION 11-00581-00-BR	COUNTY WINNEBAGO	TOTAL SHEETS 17	SHEET NO. 11
CONTRACT NO.				
ILLINOIS FED. AID PROJECT				

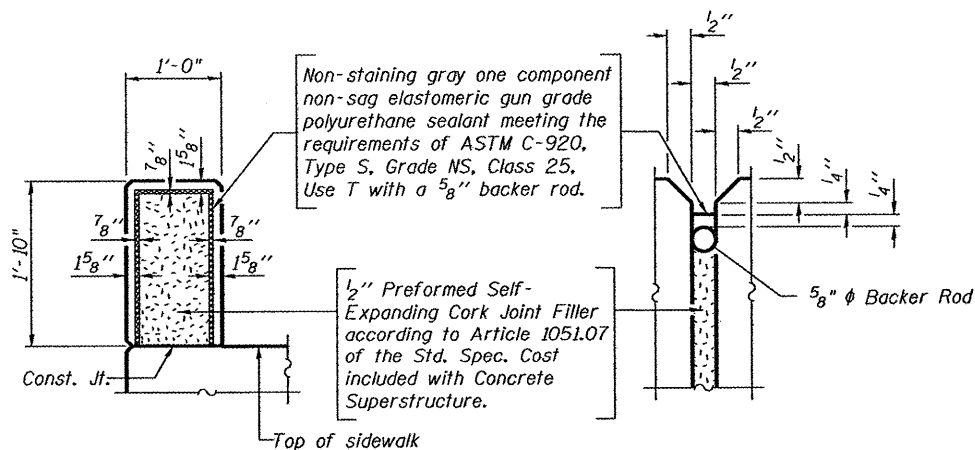
SHEET NO. S-4 OF S-8 SHEETS



**INSIDE PARAPET ELEVATION**



**SECTION THRU SIDEWALK**



**PARAPET JOINT DETAILS**

**MINIMUM BAR LAP**

#5 bars = 2'-10"

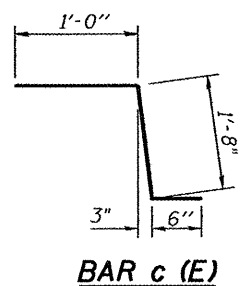
**SUPERSTRUCTURE  
BILL OF MATERIAL**

Bar	No.	Size	Length	Shape
a (E)	29	#5	30'- 8"	—
da(E)	84	#6	30'- 8"	—
de(E)	24	#5	31'- 1"	—
b (E)	29	#5	30'- 6"	—
db(E)	85	#9	33'- 0"	—
de(E)	14	#5	30'- 6"	—
c (E)	64	#5	3'- 2"	—
ca(E)	64	#5	5'- 8"	—
d (E)	62	#4	4'- 2"	—
da(E)	62	#6	4'- 6"	—
de(E)	16	#4	2'- 2"	—
e (E)	24	#4	9'- 2"	—
ea(E)	12	#4	10'- 8"	—
s(E)	86	#5	5'- 8"	—
sa(E)	86	#5	3'- 6"	—
u(E)	8	#4	3'- 2"	—
v(E)	244	#5	2'- 9"	—
Concrete Superstructure		Cu. Yd.		83.7
Reinforcement Bars, Epoxy Coated		Pound		19,460
Bridge Deck Grooving		Sq. Yd.		98
Protective Coat		Sq. Yd.		162

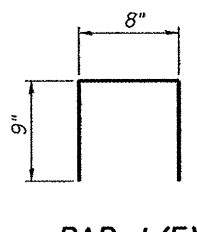
Bars indicated thus 1 x 3-#5 etc. indicates 1 line of bars with 3 lengths per line.

See Sheet S-2 for u(E) bars

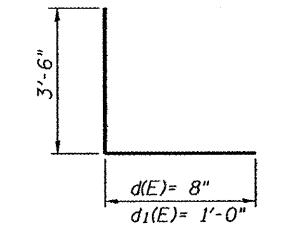
See Sheet S-4 and S-8 for v(E) bars



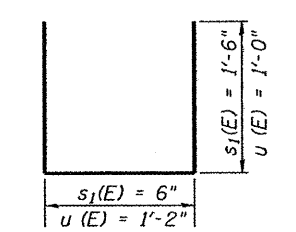
**BAR c (E)**



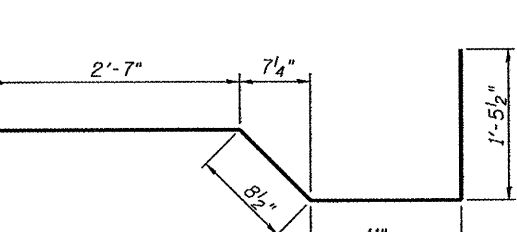
**BAR d2(E)**



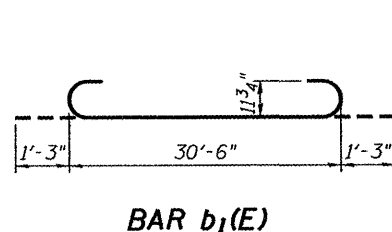
**BARS d(E) and d1(E)**



**BAR s1(E) & u(E)**



**BAR s(E)**



**BAR b1(E)**

HRGreen  
PROJECT CONTACT: Kevin M. Arff  
DATE PLOTTED: 3/23/2012 10:57 AM  
FILE NAME: 11-00581-00-BR  
PLOT DRIVER: pefsoft  
PEN TABLE: standard-trans.tbl



USER NAME = whood	DESIGNED - KMA	REVISED -
PLOT SCALE =	CHECKED - WJH	REVISED -
PLOT DATE = 3/23/2012	DRAWN - RGD	REVISED -
	CHECKED - 3/26/12	REVISED -

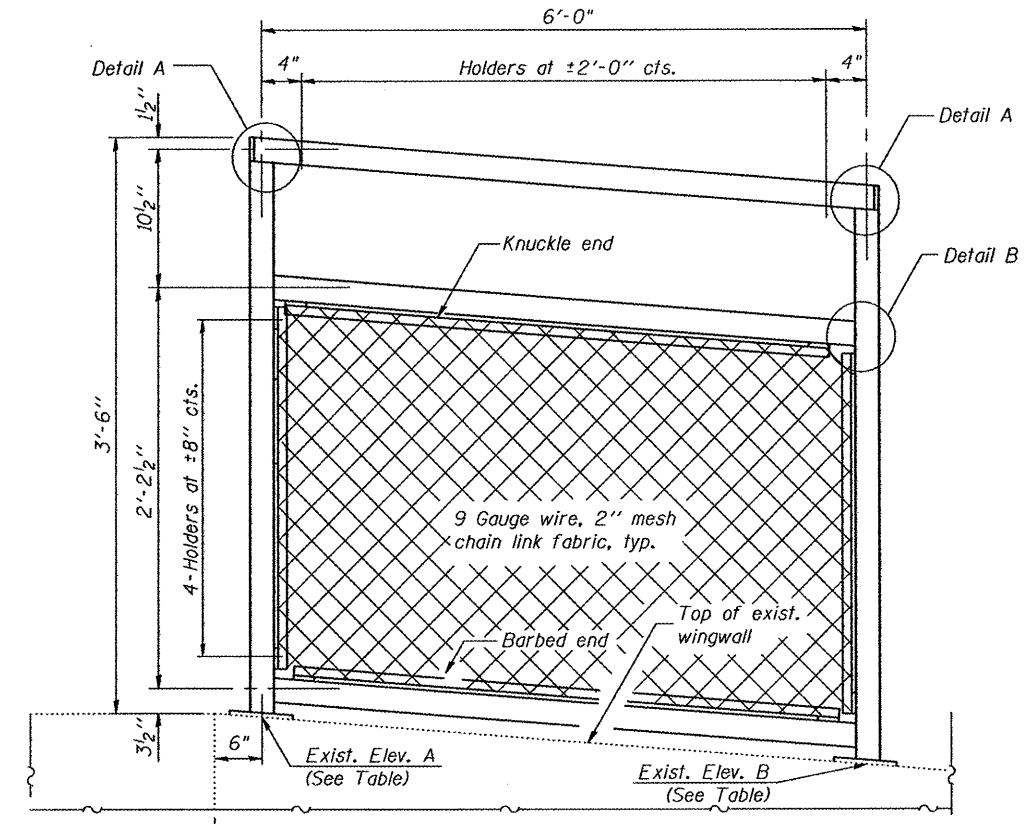
CITY OF ROCKFORD

PIERCE AVENUE OVER NORTHWEST DRAINAGEWAY  
SUPERSTRUCTURE DETAILS

SHEET NO. S-5 OF S-8 SHEETS

F.A. RTE.	SECTION	COUNTY	TOTAL SHEETS	SHEET NO.
5033	11-00581-00-BR	WINNEBAGO	17	12
CONTRACT NO.				
ILLINOIS FED. AID PROJECT				

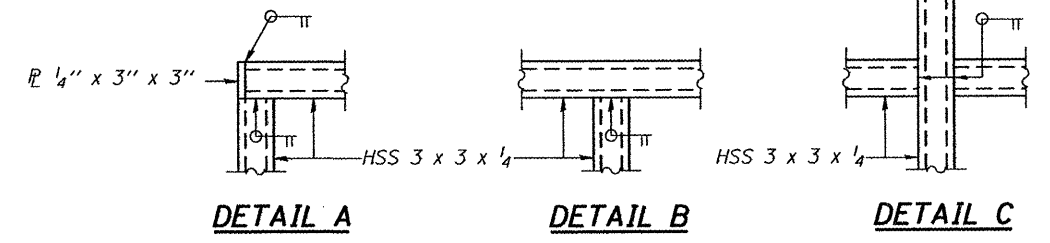
All steel rail elements shall be galvanized according to Article 509.05 of the Standard Specifications.



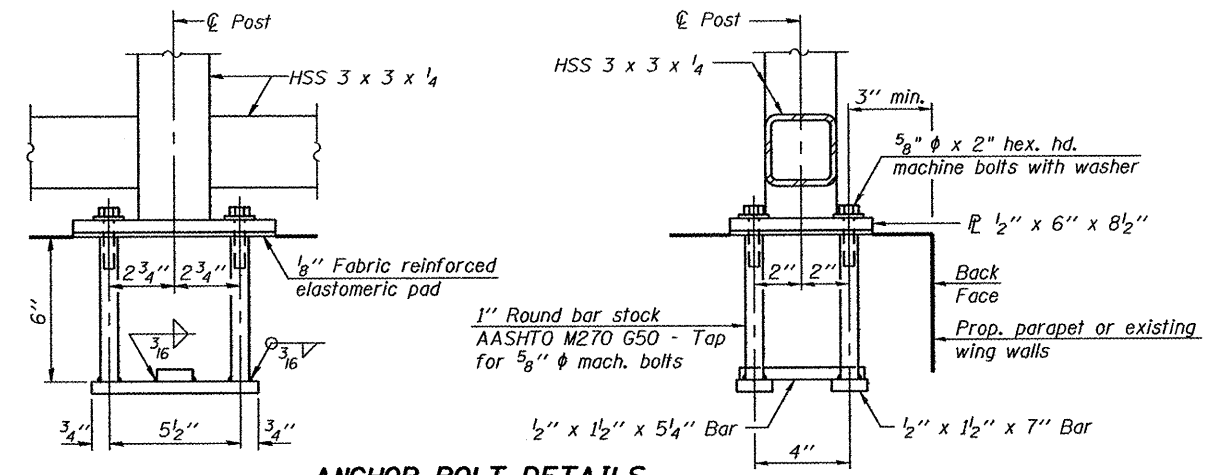
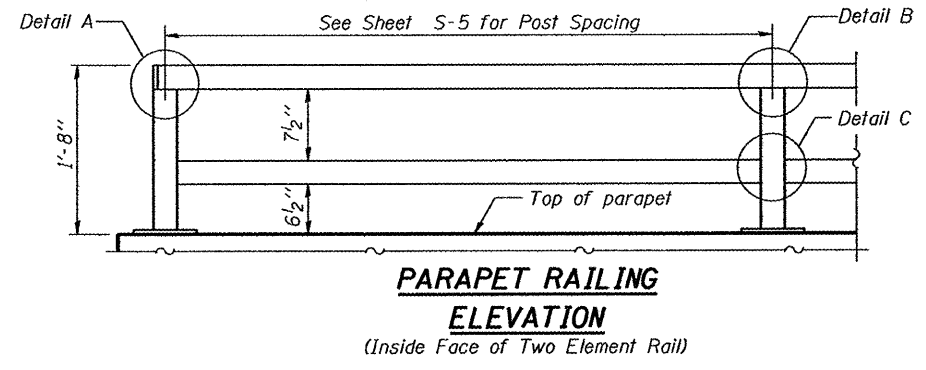
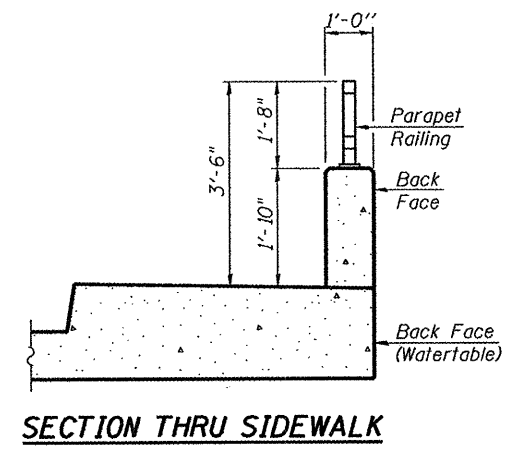
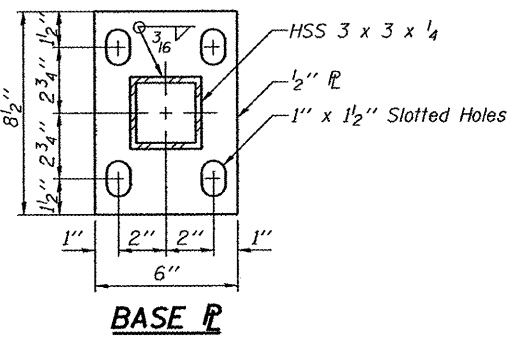
**WINGWALL ELEVATION TABLE**

Wingwall Location	Elevation	
	A	B
NE Corner	733.80	733.40
SE Corner	733.57	732.87
NW Corner	733.75	732.91
SW Corner	733.74	733.37

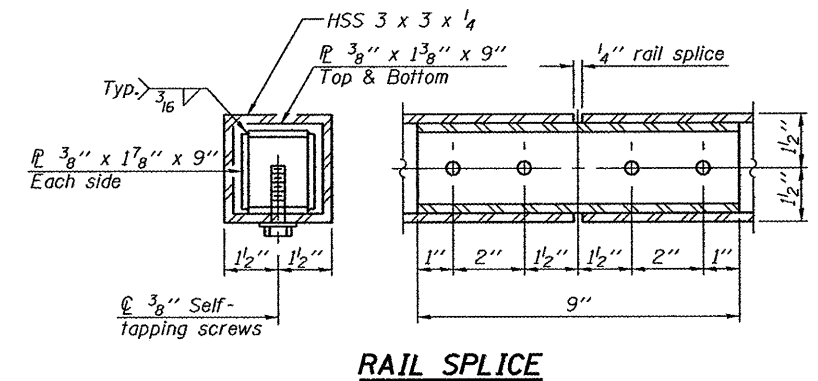
Contractor to field verify elevations



**BICYCLE RAILING**  
Looking at channel side of exist. wingwall



In lieu of the cast-in-place anchor device shown, the Contractor has the option of drilling and setting 5/8" φ anchor rods according to Article 509.06 of the Standard Specifications. Embedment shall be according to the manufacturer's specifications. Anchor rods shall be used for the Bicycle Railing installed on the existing wing walls.



**BILL OF MATERIAL**

Item	Unit	Quantity
Bicycle Railing	Foot	24
Parapet Railing	Foot	58

COMPANY NAME: HRGreen  
PROJECT CONTACT: Kevin M. Artt  
CLIENT: City of Rockford  
DATE PLOTTED: 3/23/2012 10:55:15 AM  
FILE NAME: 8610077-Rail.dgn  
PLOT DRIVER: pdfPlot  
PEN TABLE: standard-trans.tbl



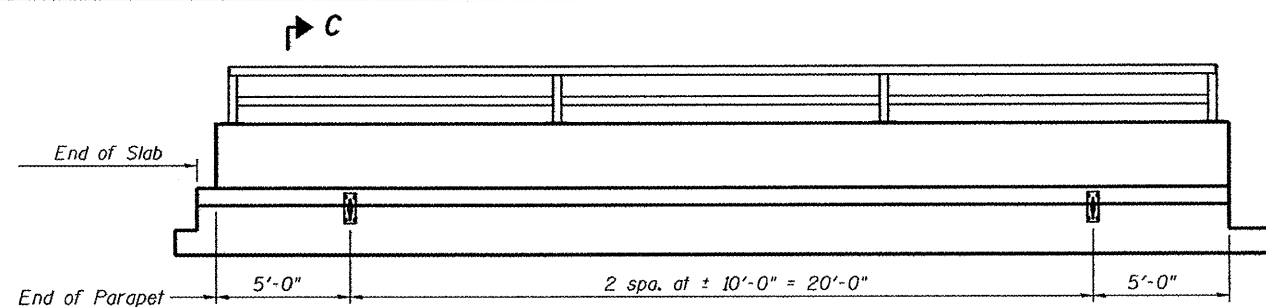
USER NAME = whood	DESIGNED - KMA	REVISED -
	CHECKED - WJH	REVISED -
PLOT SCALE =	DRAWN - RGD	REVISED -
PLOT DATE = 3/23/2012	CHECKED - 3/26/12	REVISED -

CITY OF ROCKFORD

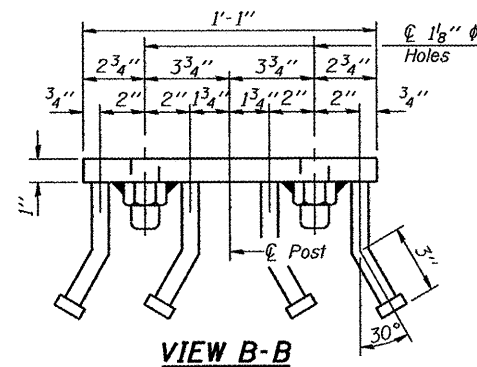
PIERCE AVENUE OVER NORTHWEST DRAINAGEWAY  
RAILING DETAILS

SHEET NO. S-6 OF S-8 SHEETS

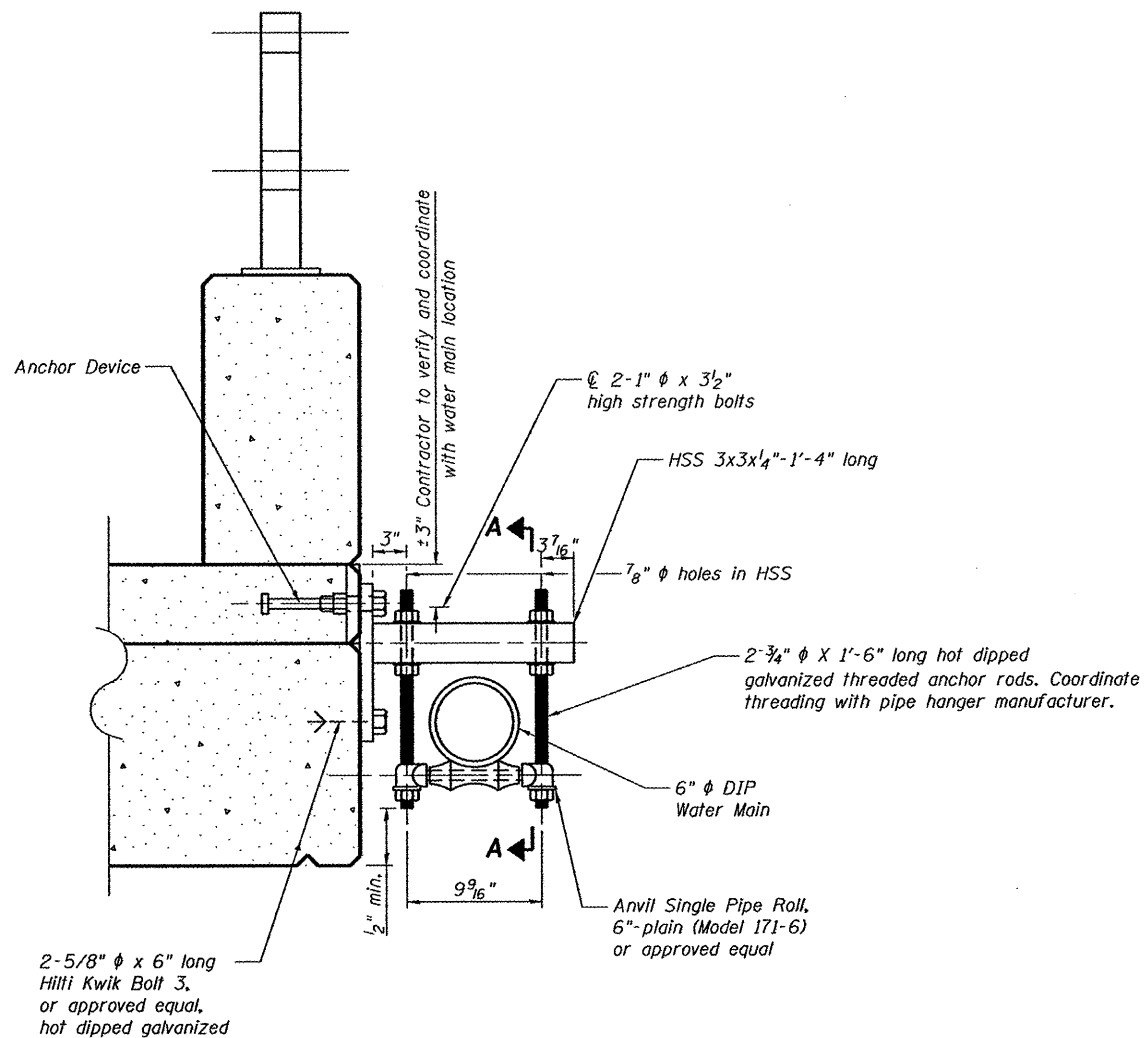
F.A. RTE. 5033	SECTION 11-00581-00-BR	COUNTY WINNEBAGO	TOTAL SHEETS 17	SHEET NO. 13
CONTRACT NO.				
ILLINOIS FED. AID PROJECT				



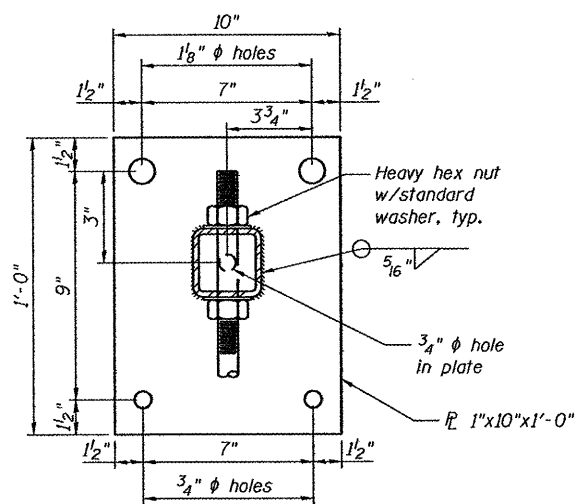
**WATER MAIN HANGER LAYOUT - OUTSIDE ELEVATION OF NORTH FACE**



**VIEW B-B**

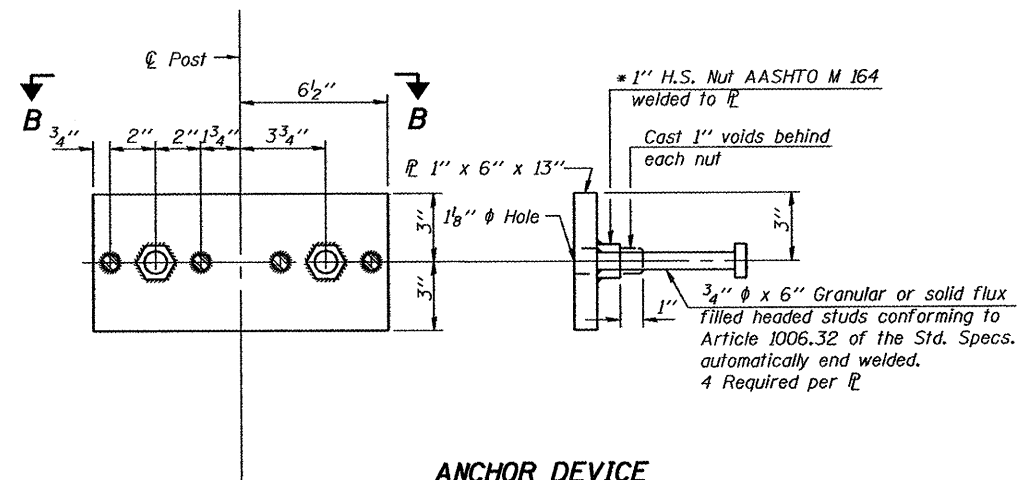


**SECTION C-C  
WATER MAIN HANGER DETAIL**  
(3 Assemblies req'd)  
Looking West



**VIEW A-A**

Water Main not shown for clarity



**ANCHOR DEVICE**

\* Threaded areas shall be plugged or blocked off during casting of sidewalk/slab.

**NOTES**

1. Hollow structural steel tubing shall conform to the requirements of ASTM designation A500 Grade B. Structural Steel Tubing shall meet the longitudinal CVN requirements of 15 ft.-lbs. at 0° F.
2. All other steel shapes and plates shall conform to the requirements of AASHTO M 270 Grade 36.
3. Bolts and nuts shall conform to the requirements of ASTM designation A307 except for high strength bolts, nuts and washers noted which shall conform to AASHTO M 164.
4. All bolts, nuts, washers and lock washers shall be galvanized according to AASHTO M 232.
5. All anchor devices, plates and HSS shall be galvanized after shop fabrication according to AASHTO M-111 and ASTM A 385.
6. The 1" high strength bolts connecting the plate to the concrete shall be tightened to a snug fit and given an additional 1/8 turn.
7. The cost of the water main hanger assemblies shall be included in the unit price bid for Ductile Iron Pipe Water Main 6".

HRGreen  
PROJECT CONTACT: Kevin M. Arty  
DATE PLOTTED: 5/24/2012 10:58:54 AM  
FILE NAME: 061007-182.dwg  
PLOT DRIVER: pdfplot  
PEN TABLE: standard-11.ctb.tbl



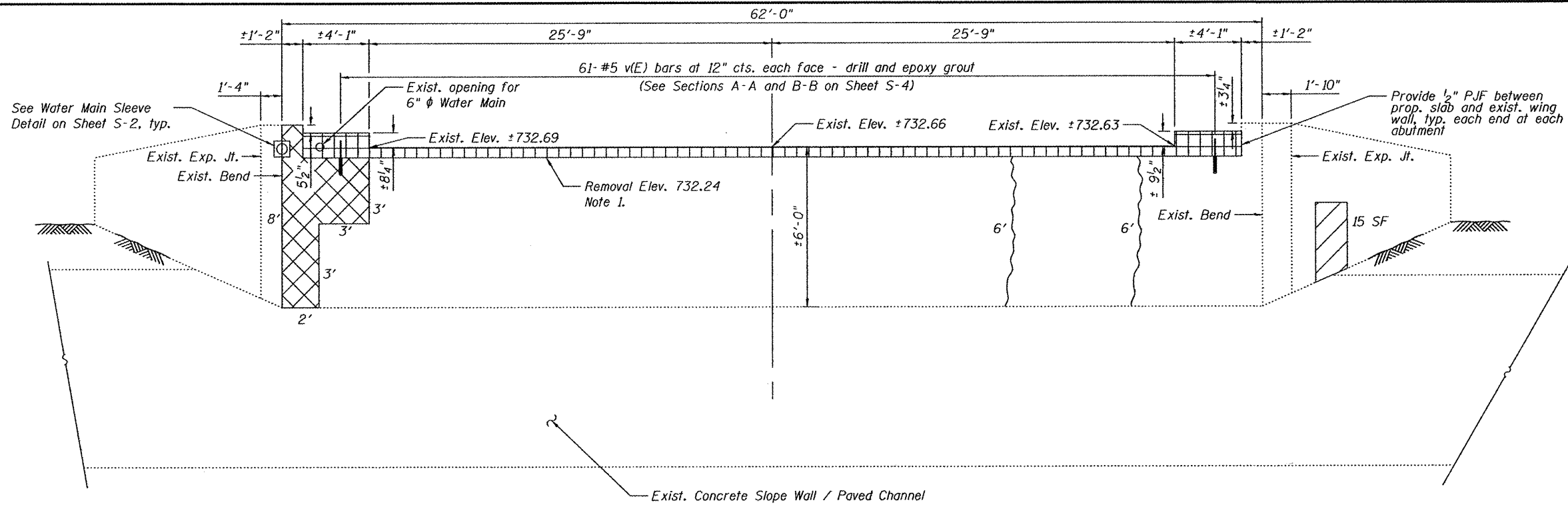
USER NAME = whood	DESIGNED - KMA	REVISED -
CHECKED - WJH	CHECKED - WJH	REVISED -
PLOT SCALE =	DRAWN - RGD	REVISED -
PLOT DATE = 3/23/2012	CHECKED - 3/26/12	REVISED -

**CITY OF ROCKFORD**

**PIERCE AVENUE OVER NORTHWEST DRAINAGEWAY  
WATERMAIN HANGER DETAILS**

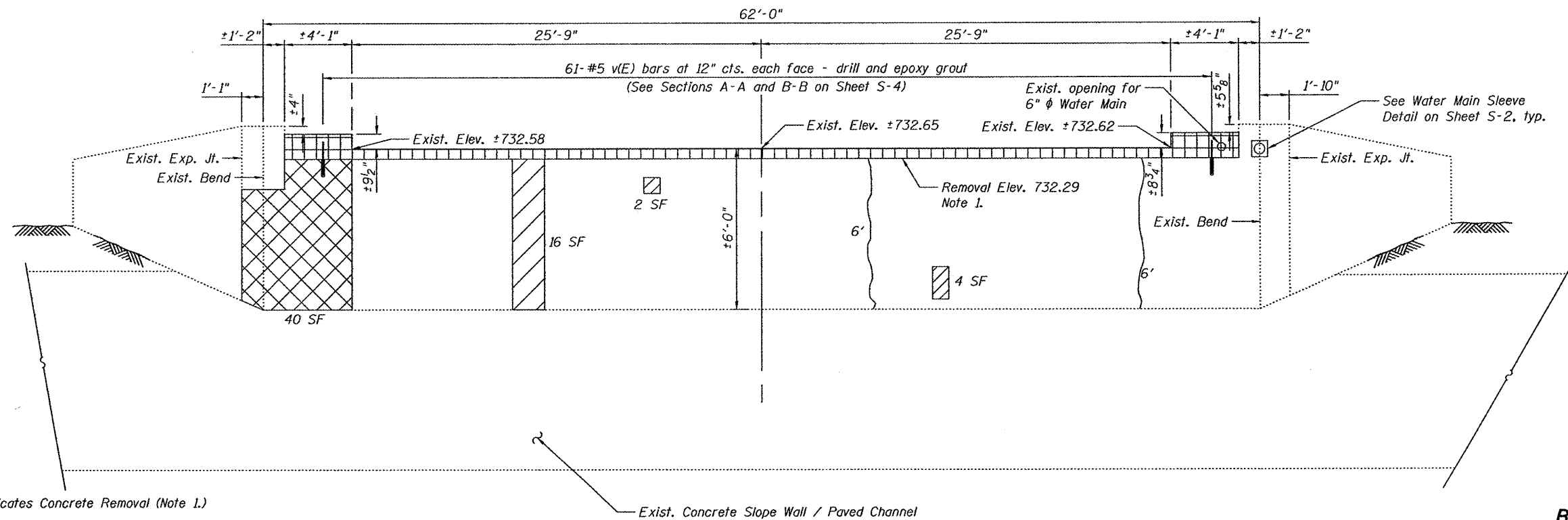
SHEET NO. 5-7 OF 5-8 SHEETS

F.A. RTE. 5033	SECTION 11-00581-00-BR	COUNTY WINNEBAGO	TOTAL SHEETS 17	SHEET NO. 14
CONTRACT NO.				ILLINOIS FED. AID PROJECT



**EAST ABUTMENT ELEVATION**

Looking East



**WEST ABUTMENT ELEVATION**

Looking West

Indicates Concrete Removal (Note 1.)

Indicates Structural Repair of Concrete (Depth Greater than 5")

Indicates Structural Repair of Concrete (Depth Less than or equal to 5")

Indicates Epoxy Crack Injection

**BILL OF MATERIAL**

Item	Unit	Quantity
Epoxy Crack Injection	Foot	24
Structural Repair of Concrete (Depth Less than or equal to 5")	Sq. Ft.	40
Structural Repair of Concrete (Depth Greater than 5")	Sq. Ft.	75

Notes:

- Concrete removal shall conform to the applicable portions of Section 501 of the Standard Specifications. Cost included with Removal of Existing Superstructures.

COMPANY NAME: HRGreen  
 PROJECT CONTACT: K. Wood  
 CITY: Rockford  
 DATE PLOTTED: 3/23/2012 11:00:00 AM  
 FILE NAME: 86110071-abut.dgn  
 PLOT DRIVER: pdfplot  
 PEN TABLE: standard-trans.tbl



USER NAME = wood	DESIGNED - KMA	REVISED -
	CHECKED - WJH	REVISED -
PLOT SCALE =	DRAWN - RGD	REVISED -
PLOT DATE = 3/23/2012	CHECKED - 3/26/12	REVISED -

**CITY OF ROCKFORD**

**PIERCE AVENUE OVER NORTHWEST DRAINAGEWAY  
ABUTMENT REPAIR DETAILS**

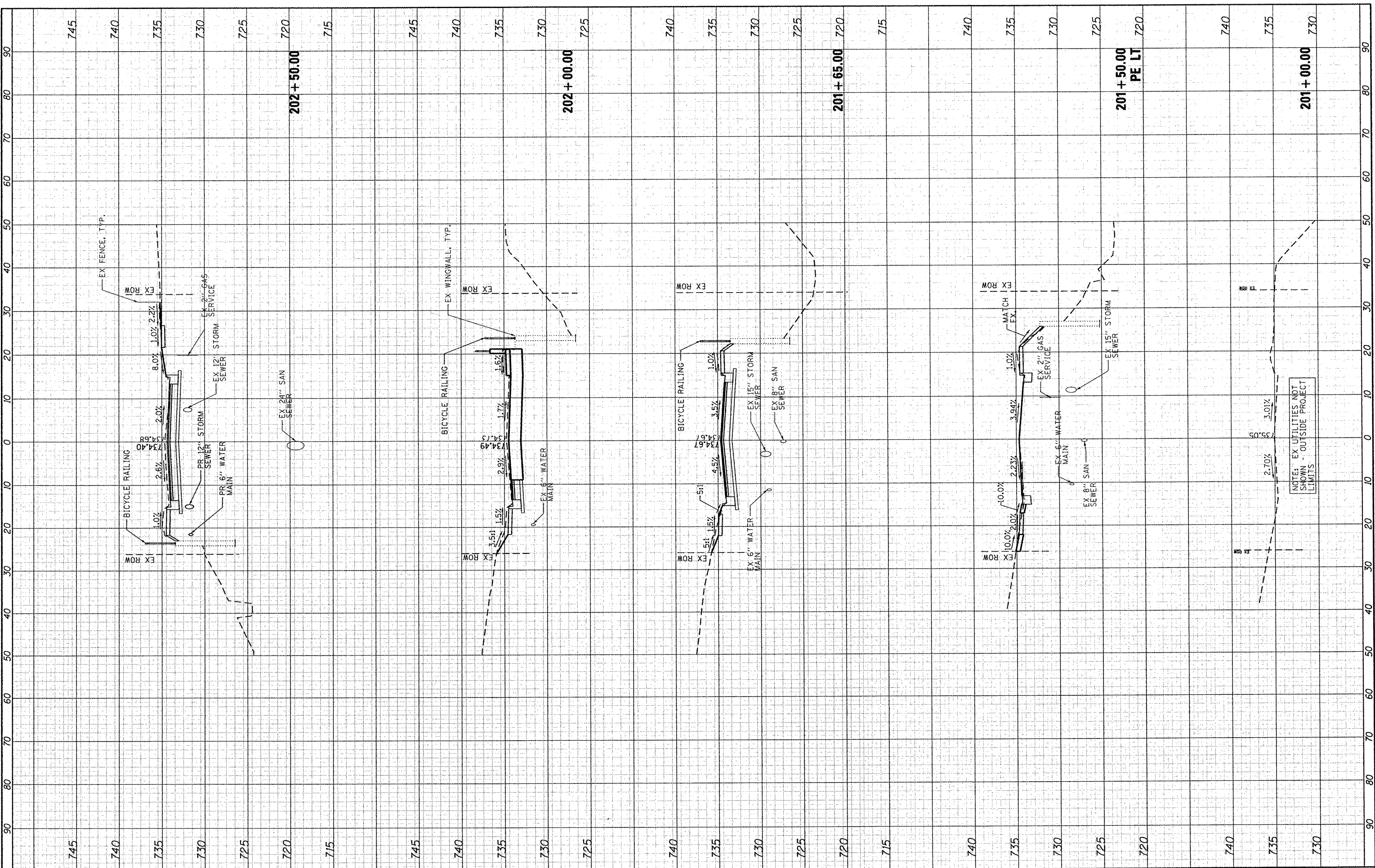
SHEET NO. 5-8 OF 5-8 SHEETS

F.A. RTE.	SECTION	COUNTY	TOTAL SHEETS	SHEET NO.
5033	11-00581-00-BR	WINNEBAGO	17	15
CONTRACT NO.				
ILLINOIS FED. AID PROJECT				

FINAL SURVEY	SURVISED	BY	DATE
NO.	NO.		
NOTE BOOK	PLOTTED		
AREAS CHECKED	TEMPLATE		

ORIGINAL SURVEY	SURVISED	BY	DATE
NO.	NO.		
NOTE BOOK	PLOTTED		
AREAS CHECKED	TEMPLATE		

PROJECT: PIERCE AVENUE OVER NORTHWEST DRAINAGEWAY  
 CLIENT: CITY OF ROCKFORD  
 DATE PLOTTED: 3/23/2012 11:20:07 AM  
 FILE NAME: 86110071-sec.dwg  
 PLOT DRIVER: pafshf  
 STANDARD TRANS: IBI



NOTES: EX UTILITIES NOT SHOWN - OUTSIDE PROJECT LIMITS

**HRGreen.com**  
 Illinois Professional Design Firm  
 #184-001322

USER NAME = ahood	DESIGNED -	REVISED -
PLOT SCALE =	DRAWN -	REVISED -
PLOT DATE = 3/23/2012	CHECKED -	REVISED -
	DATE -	REVISED -

**CITY OF ROCKFORD**

**PIERCE AVENUE OVER NORTHWEST DRAINAGEWAY  
 CROSS SECTIONS**

SCALE: 10H:5V SHEET NO. 1 OF 2 SHEETS STA. 201+00.00 TO STA. 202+50.00

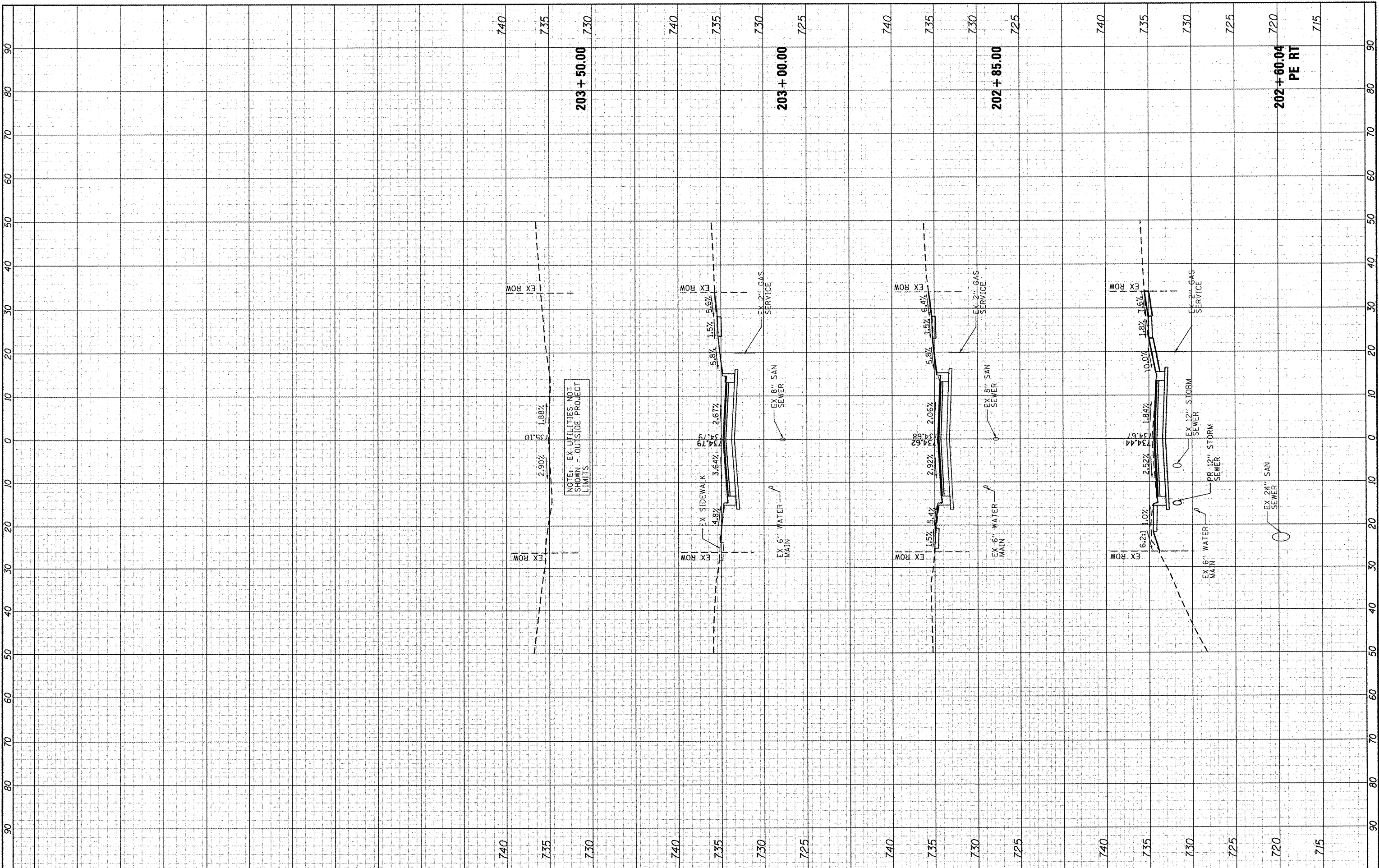
F.A.U. RTE. 5033	SECTION 11-00581-00-BR	COUNTY WINNEBAGO	TOTAL SHEETS 17	SHEET NO. 16
ILLINOIS FED. AID PROJECT			CONTRACT NO.	



FINAL SURVEY NO.	SURVEYED PLOTTED	BY	DATE
NOTE BOOK NO.	TEMPLATE AREAS CHECKED		

ORIGINAL SURVEY NO.	SURVEYED PLOTTED	BY	DATE
NOTE BOOK NO.	TEMPLATE AREAS CHECKED		

PROJECT CONTACT: **HRGreen**  
 DATE PLOTTED: 3/23/2012 10:20:10 AM  
 FILE NAME: 061007T-xsec.dgn  
 PLOT DRIVER: pdt.plt  
 PEN TABLE: standard-frans.tbl



HRGreen.com Illinois Professional Design Firm #184-001322	USER NAME = whood	DESIGNED -	REVISED -	<b>CITY OF ROCKFORD</b>	<b>PIERCE AVENUE OVER NORTHWEST DRAINAGEWAY          CROSS SECTIONS</b>	F.A.U. RTE. 5033	SECTION 11-00581-00-BR	COUNTY WINNEBAGO	TOTAL SHEETS 17	SHEET NO. 17
	PLOT SCALE =	CHECKED -	REVISED -			SCALE: 10H:5V	SHEET NO. 2 OF 2 SHEETS	STA. 202+60.04 TO STA. 203+50.00	CONTRACT NO. ILLINOIS FED. AID PROJECT	
	PLOT DATE = 3/23/2012	DATE -	REVISED -							