

INDEX OF SHEETS

SHEET NO.	DESCRIPTION
1.	COVER SHEET
2.	SUMMARY OF QUANTITIES AND GENERAL NOTES
3.	SCHEDULE OF QUANTITIES
4.	TYPICAL SECTIONS
5.-6.	PLAN AND PROFILE
7.	GUARDRAIL AND GRADING LAYOUT
8.-17.	STATION CROSS SECTIONS
18.-28.	BRIDGE PLANS
29.	BORINGS

HIGHWAY STANDARDS:

000001-06	STANDARD SYMBOLS, ABBREVIATIONS, AND PATTERNS
420401-08	BRIDGE APPROACH PAVEMENT CONNECTOR
515001-03	NAME PLATE FOR BRIDGES
601101-01	CONCRETE HEADWAL FOR PIPE DRAIN
630001-10	STEEL PLATE BEAM GUARDRAIL
630201-06	PCC / HMA STABILIZATION AT STEEL PLATE BEAM GUARDRAIL
630301-05	SHOULDER WIDENING FOR TYPE 1 (SPECIAL) GUARDRAIL TERMINALS
631032-07	TRAFFIC BARRIER TERMINAL, TYPE 6A
635006-03	REFLECTOR AND TERMINAL MARKER PLACEMENT
635011-02	REFLECTOR MARKER AND MOUNTING DETAILS
701901-02	TRAFFIC CONTROL DEVICES
780001-03	TYPICAL PAVEMENT MARKINGS
BLR 21-9	TYPICAL APPLICATION OF TRAFFIC CONTROL DEVICES FOR CONSTRUCTION OF RURAL LOCAL HIGHWAYS
BLR 23-4	TRAFFIC BARRIER TERMINAL TYPE 1

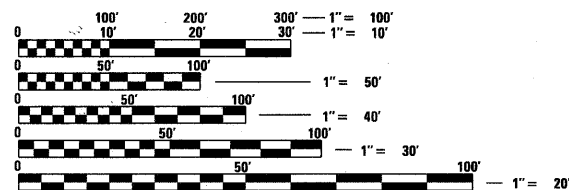
UTILITIES

AMEREN ILLINOIS
1205 EAST PELL'S STREET
PAXTON, IL 60957
ATTN: BRUCE KALLAL
217-379-5441

NICOR GAS
1844 FERRY ROAD
NAPERVILLE, IL 60563
ATTN: CONNIE LANE
630-388-3830

CITY OF FAIRBURY
PO BOX 228
FAIRBURY, IL 61739
ATTN: LEROY MCPHERSON
815-692-2743

FRONTIER COMMUNICATIONS
104 MULBERRY STREET
NORMAL, ILLINOIS 61761



FULL SIZE PLANS HAVE BEEN PREPARED USING STANDARD ENGINEERING SCALES. REDUCED SIZED PLANS WILL NOT CONFORM TO STANDARD SCALES. IN MAKING MEASUREMENTS ON REDUCED PLANS, THE ABOVE SCALES MAY BE USED.

CONTRACT NO. 87494

STATE OF ILLINOIS

DEPARTMENT OF TRANSPORTATION

DIVISION OF HIGHWAYS

**PLANS FOR PROPOSED
HIGHWAY BRIDGE PROGRAM**

PROJECT BRS-0351(108)

SECTION 08-00145-05-BR

LIVINGSTON COUNTY

C.H. 6 / 7th STREET OVER INDIAN CREEK

PROPOSED STRUCTURE NO. 053-3457

C-93-133-11

ROUTE NO.	SECTION	COUNTY	TOTAL SHEETS	SHEET NO.
F.A.S. 351	08-00145-05-BR	LIVINGSTON	29	1
FED. ROAD DIST. NO.	ILLINOIS	CONTRACT NO. 87494		



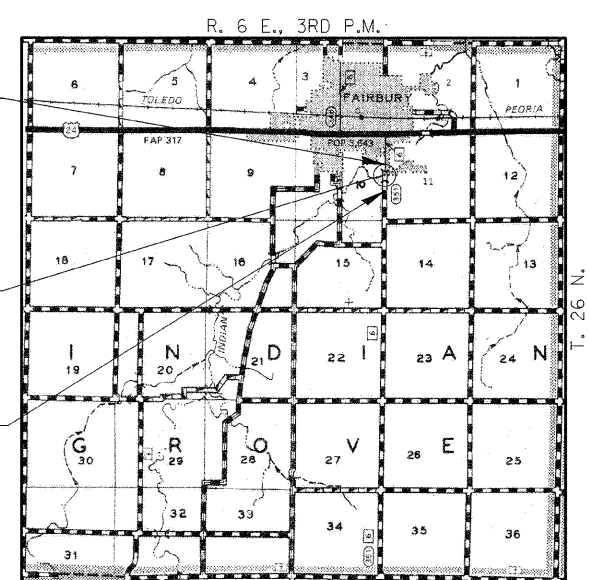
FUNCTIONAL CLASSIFICATION: MAJOR COLLECTOR (NON-URBAN)
DESIGN SPEED: 40 MPH
DESIGN TRAFFIC: 2600 ADT

ILLINOIS DEPARTMENT OF TRANSPORTATION

APPROVED: 02-17-2012
[Signature]
COUNTY ENGINEER

PASSED: 2-28-2012
[Signature]
DISTRICT THREE
IMPLEMENTATION ENGINEER

Releasing For Bid Based on Limited Review: 2-28-2012
[Signature]
DEPUTY DIRECTOR OF HIGHWAYS
REGION TWO ENGINEER
STATE OF ILLINOIS
DEPARTMENT OF TRANSPORTATION



LOCATION MAP

APPROXIMATE SCALE: 0 1 MILE
NET LENGTH OF SECTION = 534 FEET = 0.101 MILES

DATE: 2/13/2012
[Professional Engineer Seal]
JOSEPH W. FRAZEE
062-54470
EXPIRES: 11/30/2013

HAMPTON, LENZINI AND RENWICK, INC.
CIVIL ENGINEERS - STRUCTURAL ENGINEERS - LAND SURVEYORS
HLR
3085 STEVENSON DRIVE, SUITE 201
SPRINGFIELD, ILLINOIS 62703
217.546.3400 www.hlrengineering.com
184.000959
ILLINOIS PROFESSIONAL DESIGN FIRM LS / PE / SE CORPORATION
PROJECT NUMBER: 10.0191.130
DATE: 02/13/12