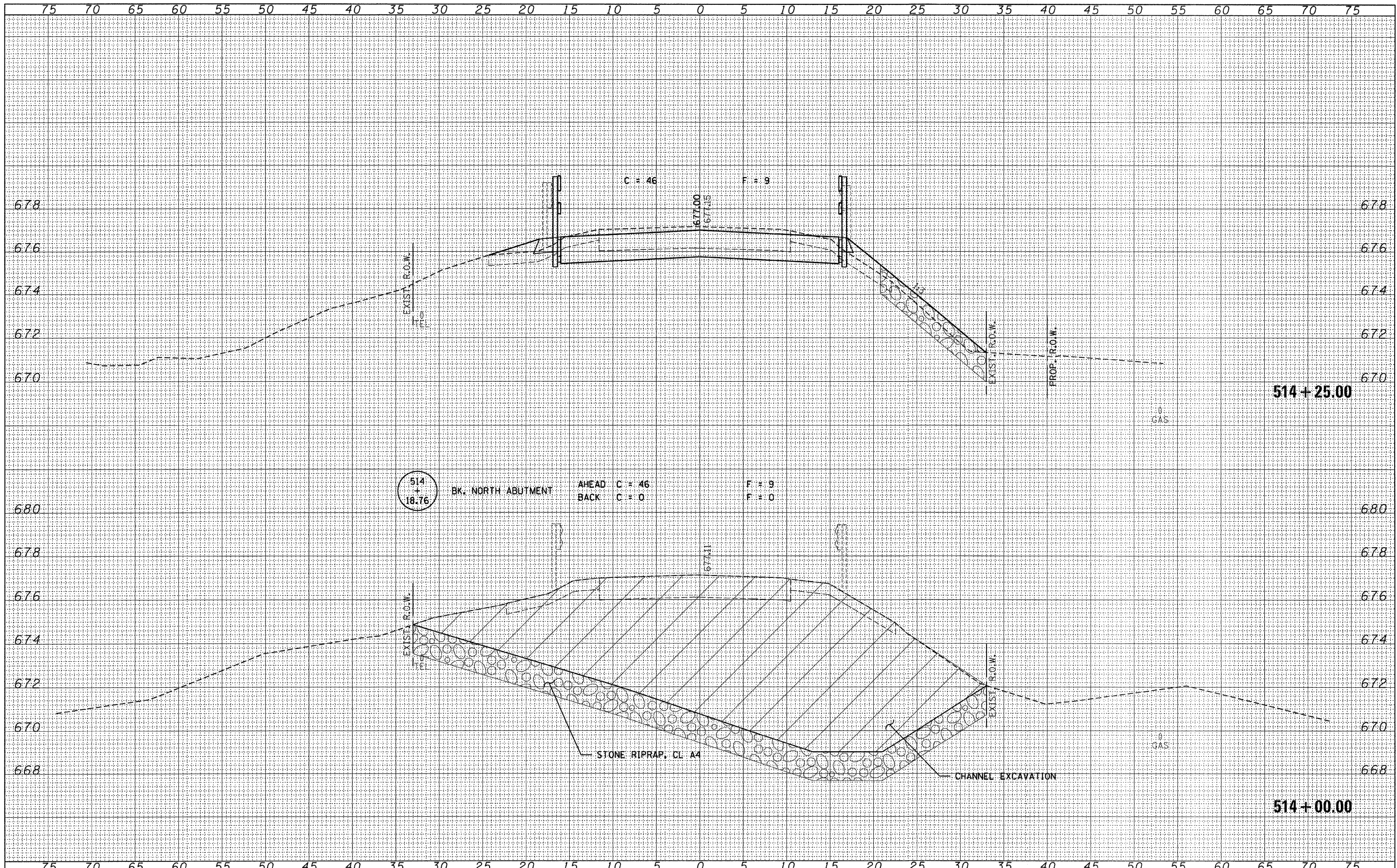


FINAL SURVEY	BY	DATE
SURVEYED		
PLOTTED		
TEMPLATE		
NOTE BOOK		
NO.		
AREAS CHECKED		

ORIGINAL SURVEY	BY	DATE
SURVEYED		
PLOTTED		
TEMPLATE		
NOTE BOOK		
NO.		
AREAS CHECKED		



FILE NAME = 100191-sh1-ax-dgn
 HAMILTON, LENZINI AND RENWICK, INC.
 3580 STEVENSON DRIVE, SUITE 201
 SPRINGFIELD, ILLINOIS 62703
 ILLINOIS PROFESSIONAL DESIGN FIRM
 LS / PE / SE CORP. 184.000859

USER NAME =
 PLOT SCALE =
 PLOT DATE = 2/14/2012

DESIGNED - J.W.F.
 DRAWN - T.W.K.
 CHECKED - S.W.M.
 DATE - 02/13/12

REVISED -
 REVISED -
 REVISED -
 REVISED -

STATE OF ILLINOIS
 LIVINGSTON COUNTY HIGHWAY DEPARTMENT

SCALE: H5:V2
 SHEET NO. OF SHEETS
 STA. 514+00.00 TO STA. 514+25.00

STATION CROSS SECTIONS
 C.H. 6 / S. 7TH STREET

F.A.S.	SECTION	COUNTY	TOTAL SHEETS	SHEET NO.
351	08-00145-05-BR	LIVINGSTON	29	15
SOUTH 7TH STREET			CONTRACT NO. 87494	
ILLINOIS FED. AID PROJECT				