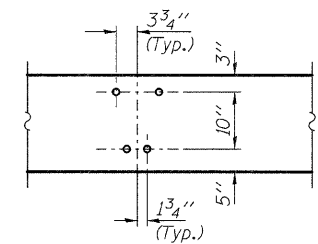
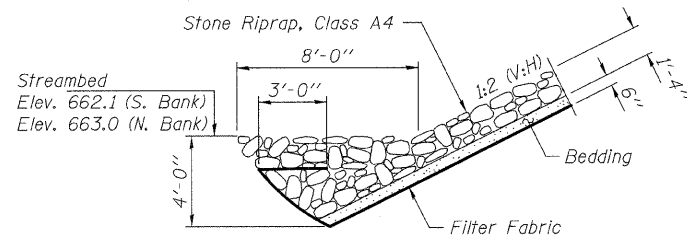


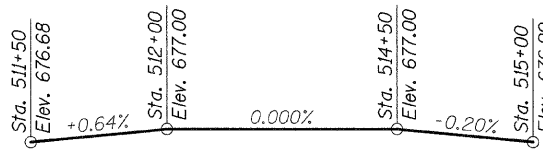
**ELEVATION**  
Showing Rail Post Spaces  
See sheet 9 of 12 for Railing Details.



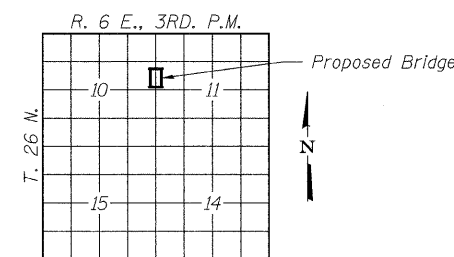
**DETAIL A**



**SECTION A-A**



**PROFILE GRADE**



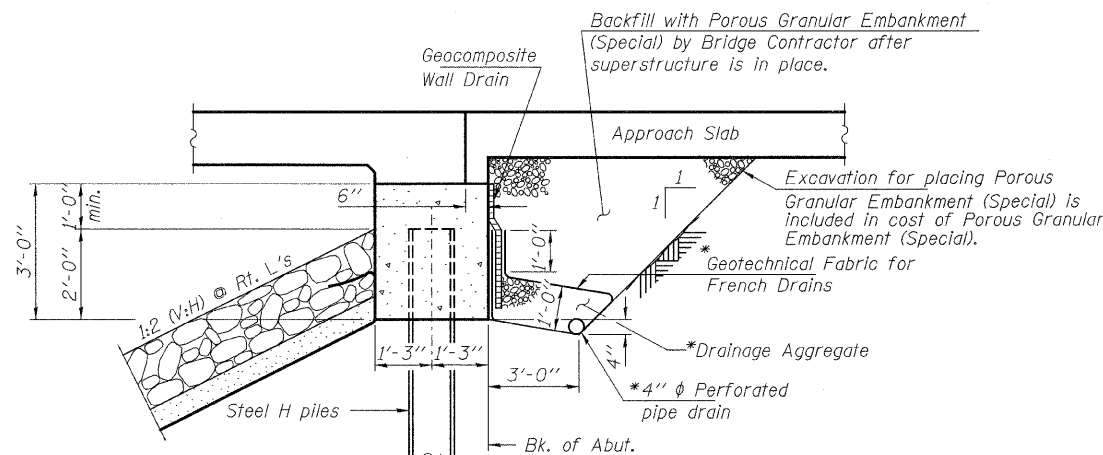
**LOCATION SKETCH**

INDIAN CREEK  
BUILT 201. BY  
LIVINGSTON COUNTY  
SEC. 08-00145-05-BR  
C.H. 6 / S. 7th. STREET  
STR. NO. 053-3457  
LOADING HL-93

**NAME PLATE**  
See Std. 515001

**GENERAL NOTES**

Layout of the slope protection system may be varied to suit ground conditions in the field as directed by the Engineer.  
The Contractor shall drive test piles to 110% of the nominal required bearing specified in production locations at North Abutment or approved by the Engineer before ordering the remainder of piles.  
Reinforcement bars shall conform to the requirements of ASTM A 706 Gr 60. See Special Provisions.  
Removal of the existing slope wall shall be included in the cost of Removal of Existing Structures.  
Excavation required to construct the Abutments and Piers shall be included in the cost of Concrete Structures. No additional compensation will be allowed for Structure Excavation.  
All proposed construction activities shall be in accordance with Nationwide Permit number 14 of the Department of the Army authorized under Section 404 of the Clean Water Act.  
The IEPA has issued Section 401 Water Quality Certification for this activity. See Special Provisions for conditions.  
The Contractor shall make allowance for the deflection of forms, shrinkage, and settlement of falsework, in addition to allowance for dead low deflection.  
Protective Coat shall be applied to the top surface and the sides of the concrete deck and approach slab.  
Bridge Deck Grooving shall be completed on the bridge deck and Bridge Approach Slab.  
Pavement rollers shall not be allowed on bridge deck grooving.  
All construction joints shall be bonded.



**SECTION THRU ABUTMENT**  
(Horiz. dim. @ Rt. L's)

\* Included in the cost of Pipe Underdrains for Structures.  
Note: All drainage system components shall extend to 2'-0" from the end of each wingwall except an outlet pipe shall extend until intersecting with the side slopes. The pipes shall drain into concrete headwalls. (See Article 601.05 of the Standard Specifications and Highway Standard 601101).

**TOTAL BILL OF MATERIAL**

ITEM	UNIT	SUPER	SUB	TOTAL
Channel Excavation	Cu. Yd.			880
Stone Riprap, Class A4	Sq. Yd.			975
Filter Fabric	Sq. Yd.			975
Removal of Existing Structures	Each			1
Concrete Structures	Cu. Yd.		75.2	75.2
Concrete Superstructure	Cu. Yd.	401.5		401.5
Bridge Deck Grooving	Sq. Yd.	822		822
Concrete Encasement	Cu. Yd.		36.2	36.2
Protective Coat	Sq. Yd.	939		939
Reinforcement Bars, Epoxy Coated	Pound	112,280	12,030	124,310
Bar Splicers	Each			64
Steel Railing, Type SM	Foot	432		432
Furnishing Steel Piles HP12x53	Foot		825	825
Driving Piles	Foot		225	225
Test Pile Steel HP12x53	Each			1
Name Plates	Each			1
Geocomposite Wall Drain	Sq. Yd.			27
Pipe Underdrains for Structures, 4"	Foot			106
Setting Piles in Rock	Each		20	20
Porous Granular Embankment (Special)	Ton		113	113