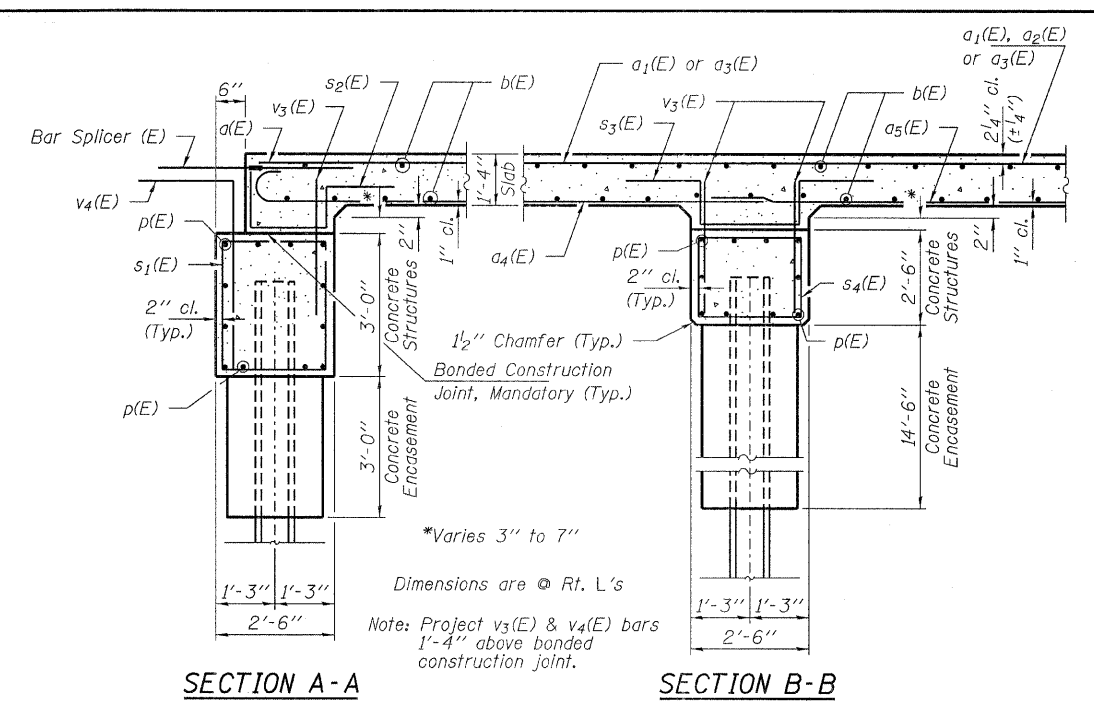
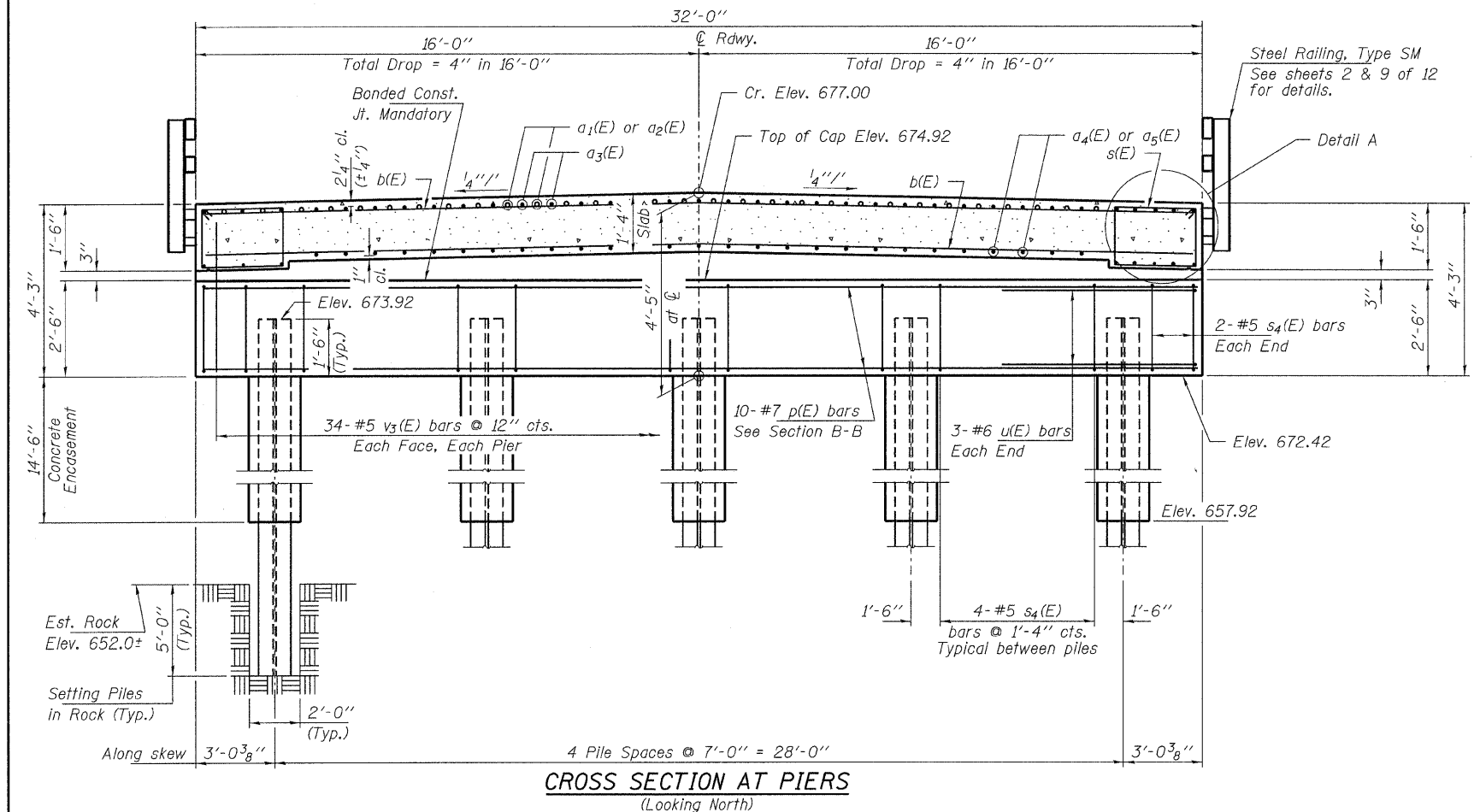


**CROSS SECTION NEAR ABUTMENTS**  
(Looking North)

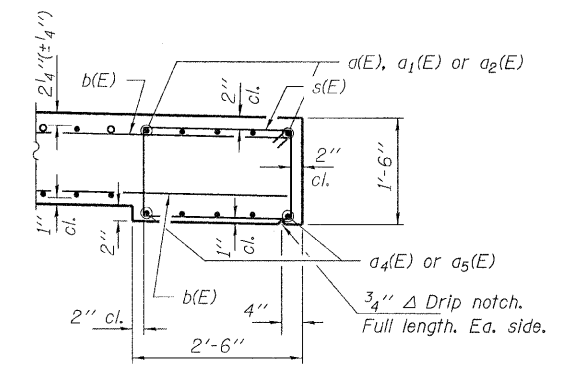


**SECTION A-A**

**SECTION B-B**



**CROSS SECTION AT PIERS**  
(Looking North)



**DETAIL A**

**PILE DATA**

Type and Size	Steel Piles HP12x53
No. Req'd.	*30
Factored Resistance Available (Rf)	230 Kips/Pile
Nominal Required Bearing (Rn)	419 Kips/Pile (Abuts.)
	Set in Rock (Piers)
Est. Lengths	25 Ft/Pile (Abuts.)
	30 Ft/Pile (Piers)

Notes: \*Includes one test pile to be driven in a permanent location at the North Abutment.  
The test piles shall be driven to 110 percent of the Nominal Required Bearing Indicated in the pile data information.