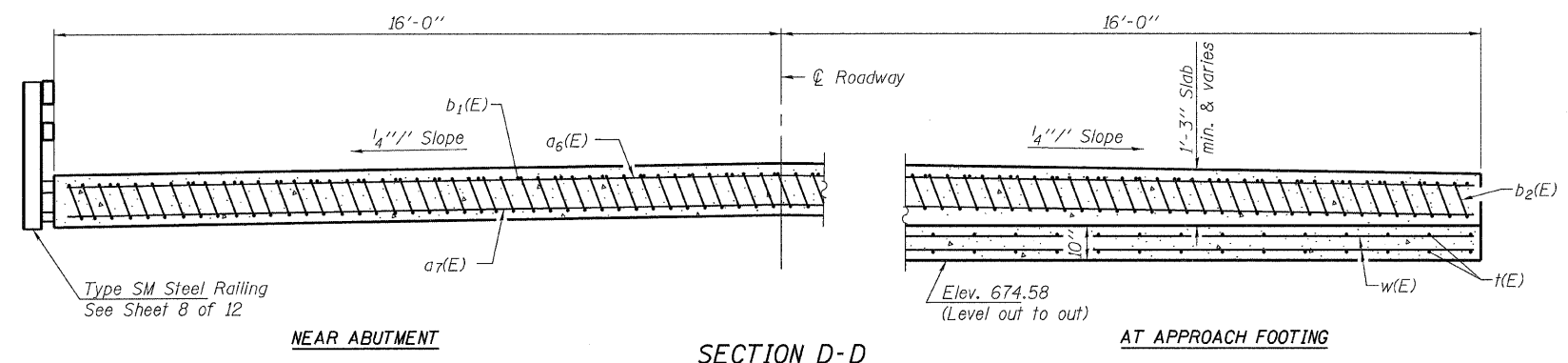
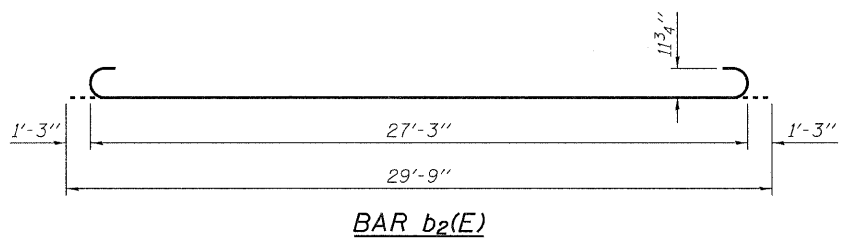


Notes:
 See sheet 7 of 12 for Detail A.
 Approach slab and parapet concrete shall be paid for as Concrete Superstructure.
 Approach footing concrete shall be paid for as Concrete Structures.
 Reinforcement shall be paid for as Reinforcement Bars, Epoxy Coated.
 For v4(E) bar details, see sheet 5 of 12.
 The approach footing maximum applied service bearing pressure (Qmax) = 2.0 ksf.
 For bar splicer details, see sheet 10 of 12.
 Cost of excavation for approach footing included with Concrete Structures.
 For Porous Granular Embankment (Special) and drainage treatment details, see sheet 2 of 12.
 Cost of Sawcut included with Concrete Structures.



* Tilt #9 b2(E) bars as required to maintain clearance.
 *** Cost included with Concrete Superstructure.



**TWO APPROACHES
 BILL OF MATERIAL**

Bar	No.	Size	Length	Shape
a6(E)	50	#4	33'-9"	—
a7(E)	92	#5	33'-9"	—
b1(E)	52	#4	29'-8"	—
b2(E)	152	#9	29'-9"	⌋
t(E)	128	#4	10'-3"	—
w(E)	80	#5	33'-9"	—
Concrete Structures			Cu. Yd.	21.0
Concrete Superstructure			Cu. Yd.	93.3
Bridge Deck Grooving			Sq. Yd.	200
Protective Coat			Sq. Yd.	213
Reinforcement Bars, Epoxy Coated			Pound	24,460

(Sheet 2 of 2)