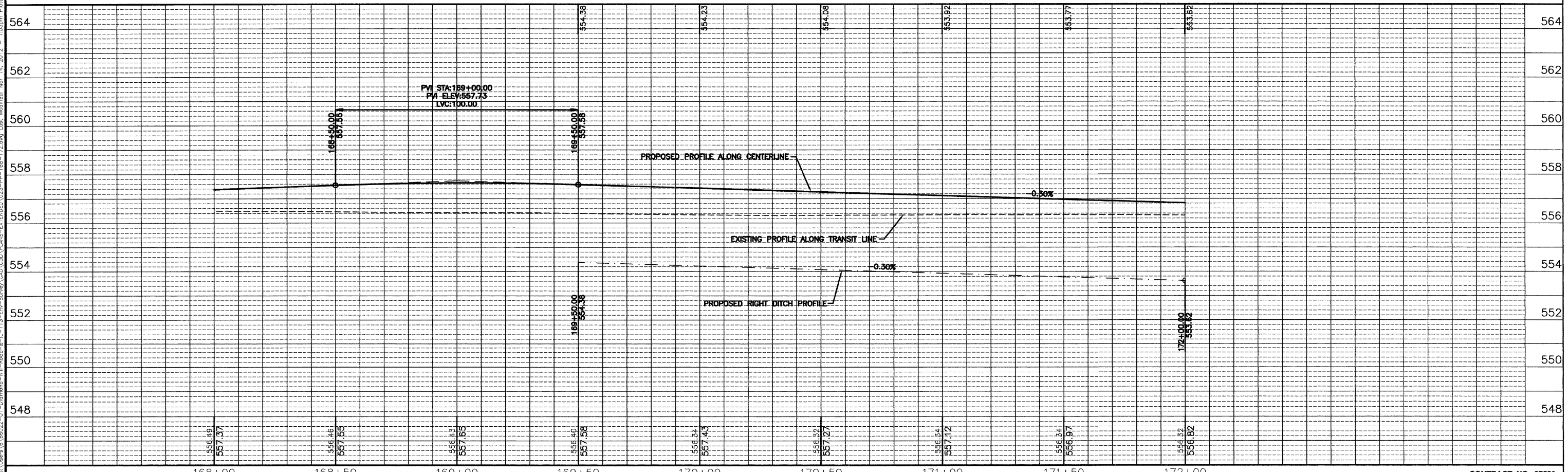


SEE SHEETS 10 & 11
FOR DRAINAGE
SCHEDULES

BENCHMARKS:
CHISELED "X" IN LIGHT POLE BASE
AT NORTHWEST CORNER OF IL 113
AND CURTIS
ELEV. = 560.20
SOUTHWEST BOLT ON FIRE HYDRANT
250' ± EAST OF WILL ROAD ON NORTH
SIDE OF IL 113
ELEV. = 556.76



CHAMLIN & ASSOCIATES, INC. © 2011
Drawing: 66022.01Y-113-Env-Survey\CAD\CADD PLANS-EXTENDED\023-PP-168-172.dwg Last Modified: Mar 14, 2012 - 1:55:30pm Plotted on: Mar 27, 2012 - 2:49pm by nancq

DRAWN BY: NV	REVISIONS			
CHECKED BY: JKC	LEVEL	BY	DATE	DESCRIPTION
DATE: 02/12				



FAS 301 / FAU 383
SECTION 11-00007-00-WR
VILLAGE OF DIAMOND
GRUNDY AND WILL COUNTIES

PLAN AND PROFILE - IL 113
STA. 168+00 TO STA. 172+00

CONSTRUCTION PLANS	CURRENT AS OF: 02/12	
	SCALE: AS NOTED	SHEET 23
	FILE NO.: 66022.01Y-	OF 96

CONTRACT NO. 87520