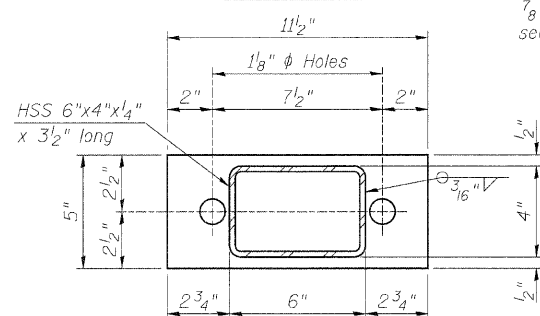
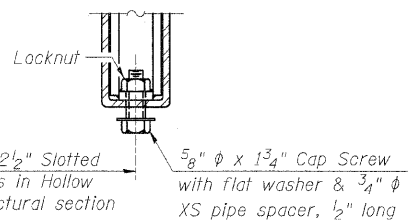


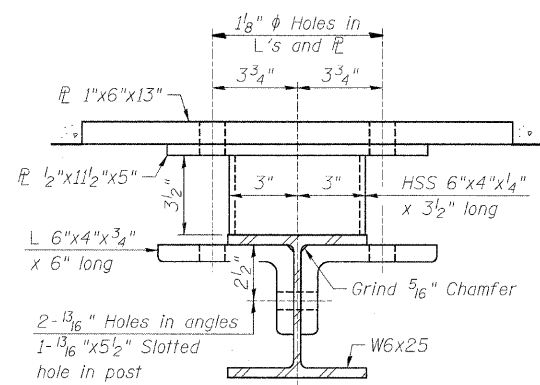
R 1/2"x7"x6"



R 1/2"x11 1/2"x5"



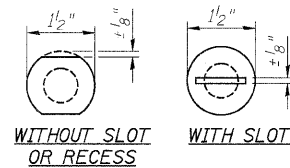
RAIL SPLICE CONNECTION AT EXPANSION JT.



SECTION C-C

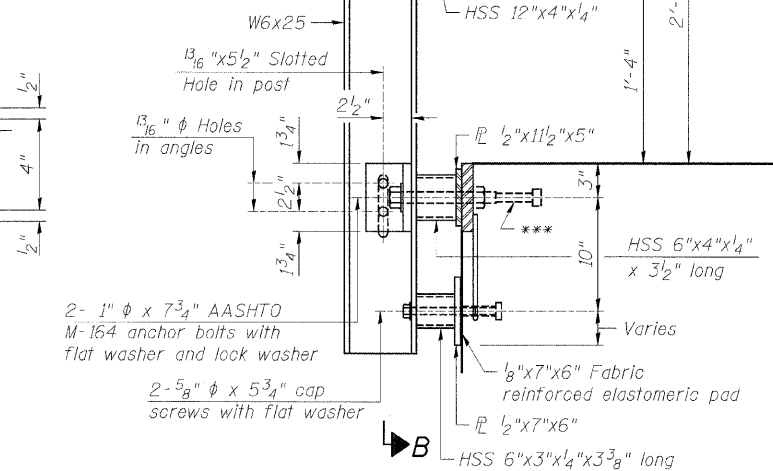
ELEVATION VIEW

DETAIL OF 3/4" φ ROUND HEAD BOLT



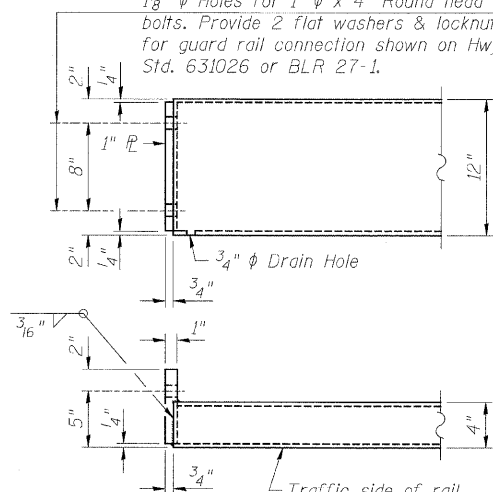
VIEW A-A

2- 3/4" φ x 6" Round Head Bolts (With slot or approved recess in head) with locknut & flat washer. 7/8" φ Holes in Hollow structural section may be drilled in the field.

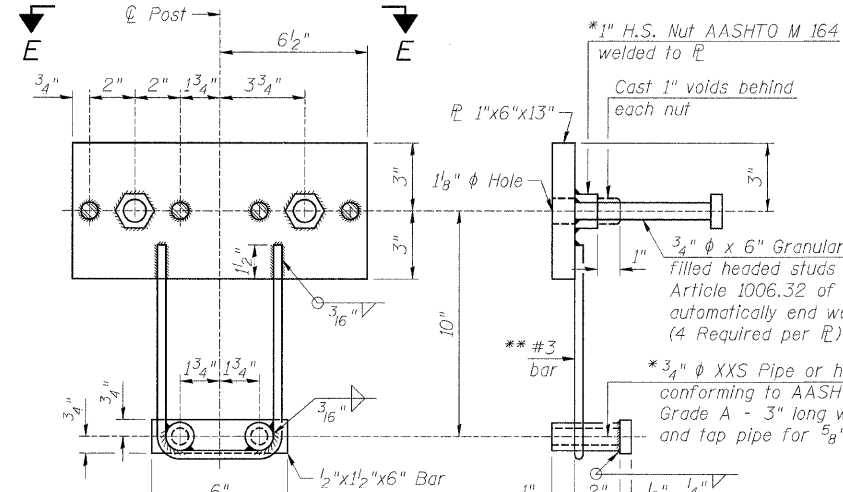


SECTION AT RAILING POST

2- 1" φ x 7 3/4" AASHTO M-164 anchor bolts with flat washer and lock washer
2- 5/8" φ x 5 3/4" cap screws with flat washer
1/8"x7"x6" Fabric reinforced elastomeric pad
R 1/2"x7"x6"

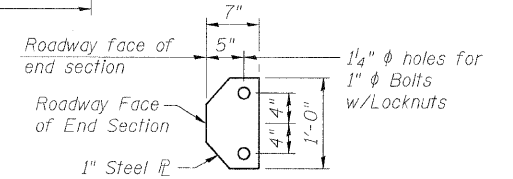
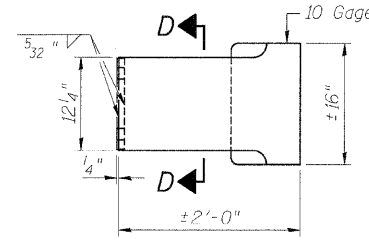


END OF RAIL DETAILS

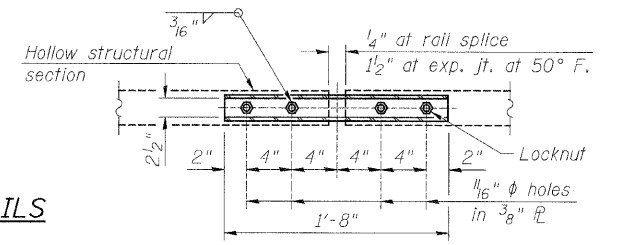


ANCHOR DEVICE

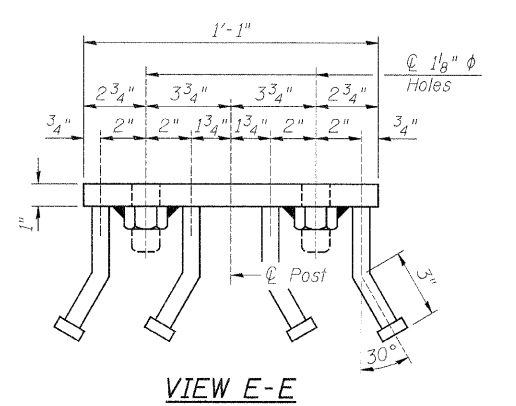
CURLED END SECTION DETAILS
****(4 required)



SECTION D-D



PLAN-BOTT. SPLICE R TYPICAL



VIEW E-E

BILL OF MATERIAL

Item	Unit	Quantity
Steel Railing, Type S-1	Foot	121

SECTIONS AT RAIL SPLICE

NOTES:

- All field drilled holes shall be coated with an approved zinc rich paint before erection.
- For multi-span bridges, sufficient 1/4"x6"x1'-2" galvanized steel shims shall be provided to align rail between adjacent spans. Cast included with Steel Railing, Type S-1.
- All steel rail elements shall be galvanized according to Article 509.05 of the Standard Specifications.
- * Threaded areas shall be plugged or blocked off during casting of beam. Galvanized after fabrication.
- ** Whenever the lower insert assemblies interfere with strand locations, the #3 bars shall be cut and adjusted in order to allow raising or lowering of the lower inserts. Maximum adjustment not to exceed 1/2".
- *** The studs of the anchor devices shall be placed below the top reinforcement bars and the outermost longitudinal reinforcement bar shall be placed directly above the studs of the rail post anchor device.
- **** Cost of Curled End Sections to be included with Steel Railing, Type S-1.



DESIGNED - MICHAEL WAGNER	REVISED -
CHECKED - BRIAN CONVERSE	REVISED -
DRAWN - RON ALLEN	REVISED -
CHECKED - MEGAN CACKLEY	REVISED -

BUREAU COUNTY
T.R. 106 (850 E. ST.) OVER HICKORY CREEK
STATION 20+00

STEEL RAILING, TYPE S-1 DETAILS
STRUCTURE NO. 006-4218

STRUCTURAL SHEET NO. 7 OF 9 SHEETS

TWP. R.T.E.	SECTION	COUNTY	TOTAL SHEETS	SHEET NO.
106	08-15119-00-BR	BUREAU	18	13
WHA# 1287D10		CONTRACT NO. 87523		
[ILLINOIS] FED. AID PROJECT BR05-0011(086)				