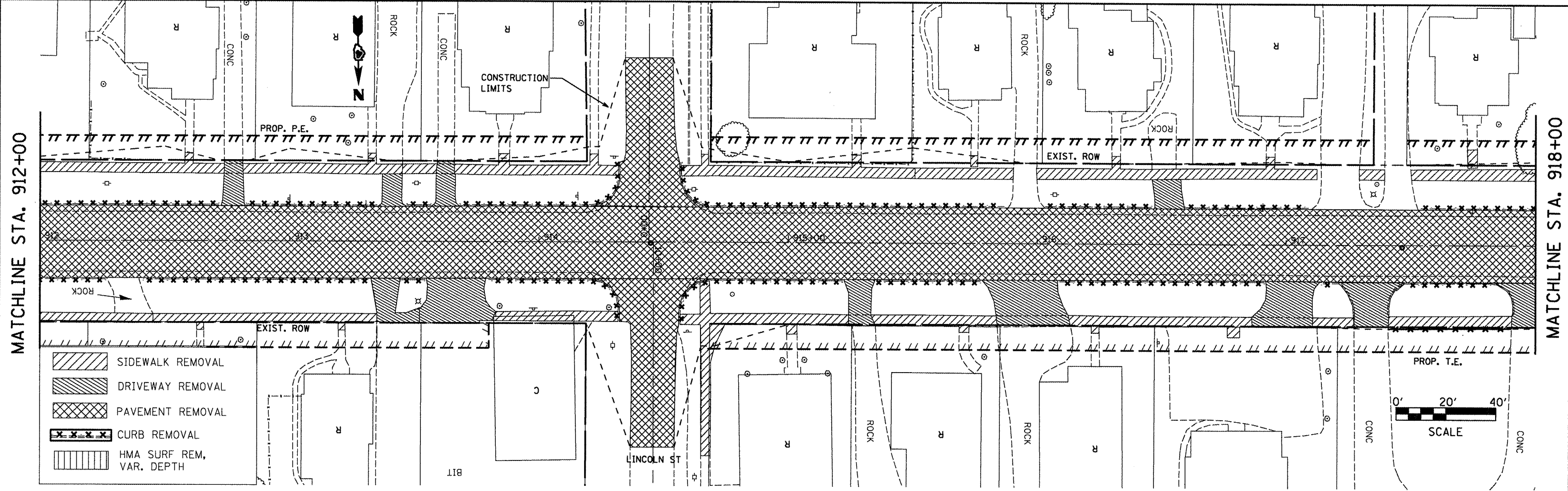


MATCHLINE STA. 906+00

MATCHLINE STA. 912+00

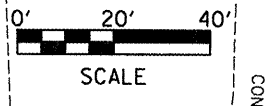
	SIDEWALK REMOVAL
	DRIVEWAY REMOVAL
	PAVEMENT REMOVAL
	CURB REMOVAL
	HMA SURF REM, VAR. DEPTH



MATCHLINE STA. 912+00

MATCHLINE STA. 918+00

	SIDEWALK REMOVAL
	DRIVEWAY REMOVAL
	PAVEMENT REMOVAL
	CURB REMOVAL
	HMA SURF REM, VAR. DEPTH



FILE NAME = plan01.dgn	USER NAME = horstkj	DESIGNED -	REVISED -	<b>STATE OF ILLINOIS DEPARTMENT OF TRANSPORTATION</b>	<b>EXISTING AND REMOVAL SHEETS</b>		F.A.P. RTE. 317	SECTION 16W-1, RS-3	COUNTY FULTON	TOTAL SHEETS 347	SHEET NO. 49
	PLOT SCALE = 48,0000 1/16"	DRAWN -	REVISED -		SCALE:	SHEET NO. OF SHEETS	STA. TO STA.	<b>CONTRACT NO. 88795</b>		ILLINOIS FED. AID PROJECT	
	PLOT DATE = 2/24/2012	CHECKED -	REVISED -								
		DATE -	REVISED -								