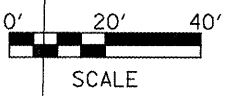
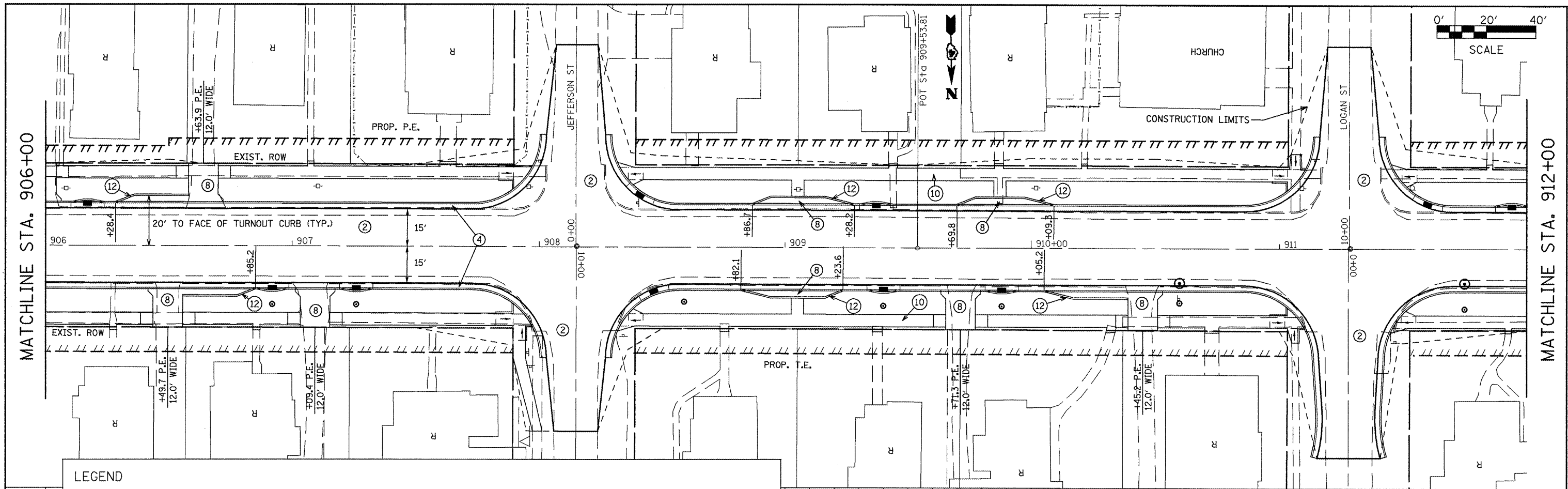


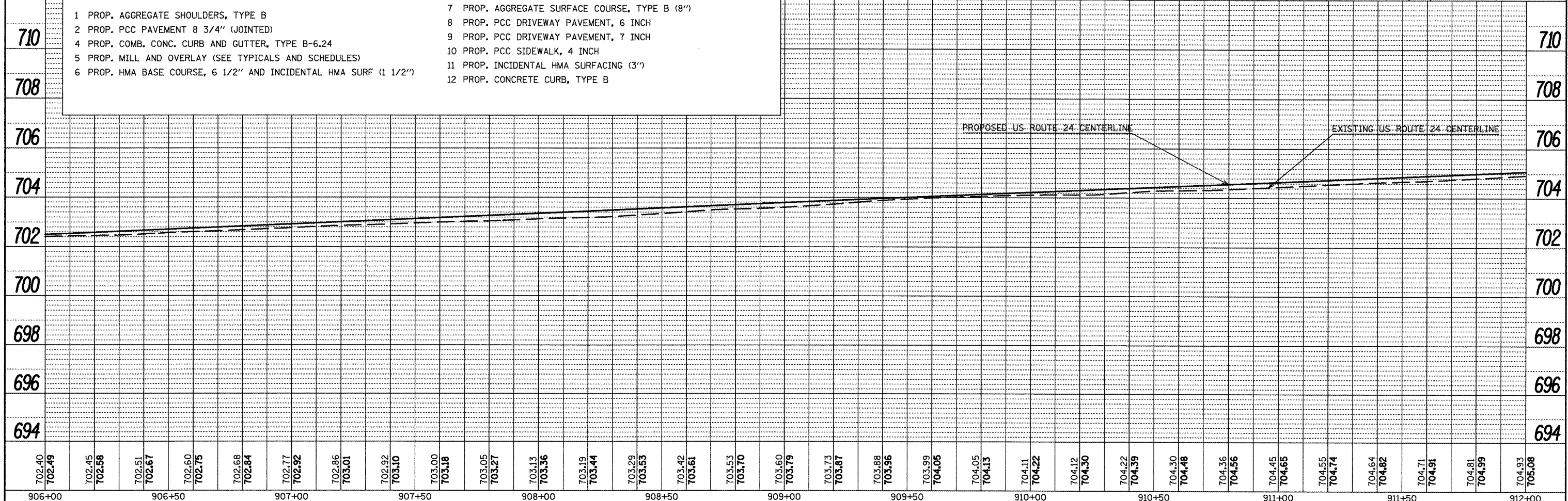
PLAN	DESIGNED	BY	DATE
	NOTED		
	CHECKED		
	ALIGNED		
	FILED		
	NO. _____		
	FILE NAME		

PROFILE	DESIGNED	BY	DATE
	NOTED		
	CHECKED		
	GRADES		
	STRUCTURE		
	NOTATION		
	ORIG		
	NO. _____		



LEGEND

- | | |
|--|---|
| 1 PROP. AGGREGATE SHOULDERS, TYPE B | 7 PROP. AGGREGATE SURFACE COURSE, TYPE B (8") |
| 2 PROP. PCC PAVEMENT 8 3/4" (JOINTED) | 8 PROP. PCC DRIVEWAY PAVEMENT, 6 INCH |
| 4 PROP. COMB. CONC. CURB AND GUTTER, TYPE B-6.24 | 9 PROP. PCC DRIVEWAY PAVEMENT, 7 INCH |
| 5 PROP. MILL AND OVERLAY (SEE TYPICALS AND SCHEDULES) | 10 PROP. PCC SIDEWALK, 4 INCH |
| 6 PROP. HMA BASE COURSE, 6 1/2" AND INCIDENTAL HMA SURF (1 1/2") | 11 PROP. INCIDENTAL HMA SURFACING (3") |
| | 12 PROP. CONCRETE CURB, TYPE B |



FILE NAME = p1a01.dgn	USER NAME = horstkj	DESIGNED -	REVISED -	STATE OF ILLINOIS DEPARTMENT OF TRANSPORTATION	PLAN AND PROFILE SHEETS				F.A.P. RTE. 317	SECTION 16W-1, RS-3	COUNTY FULTON	TOTAL SHEETS 347	SHEET NO. 60
	PLOT SCALE = 40.1826' / in.	DRAWN -	REVISED -		SCALE:	SHEET NO.	OF	SHEETS	STA.	TO STA.	CONTRACT NO. 88795		
	PLOT DATE = 3/28/2012	CHECKED -	REVISED -		ILLINOIS FED. AID PROJECT								
		DATE -	REVISED -										