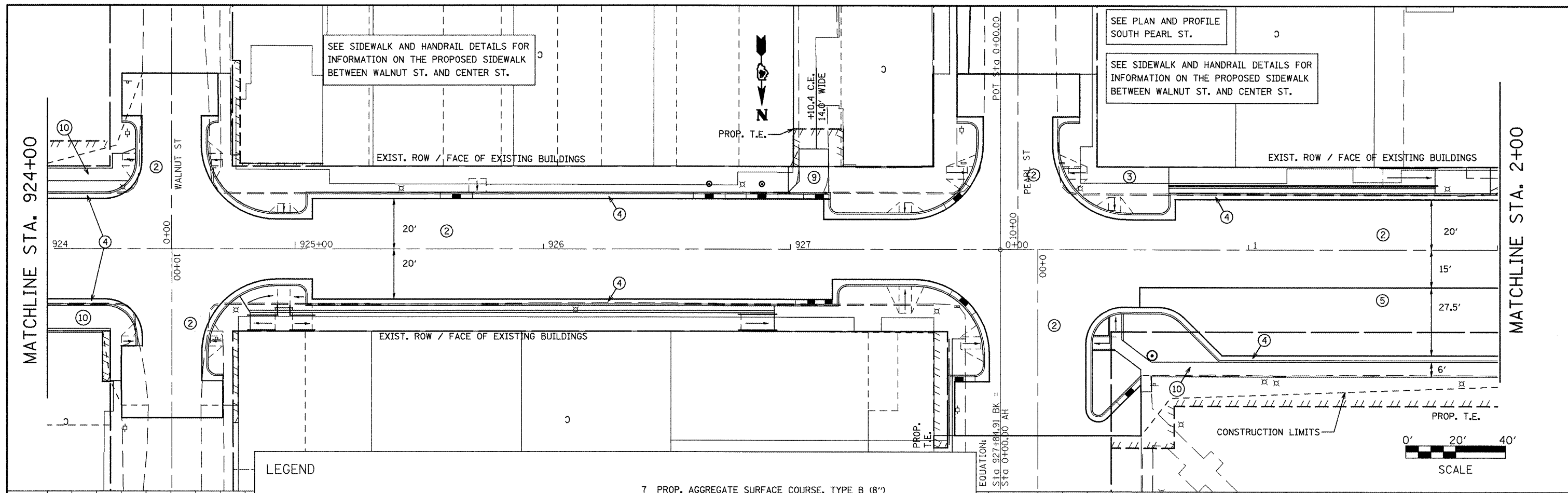


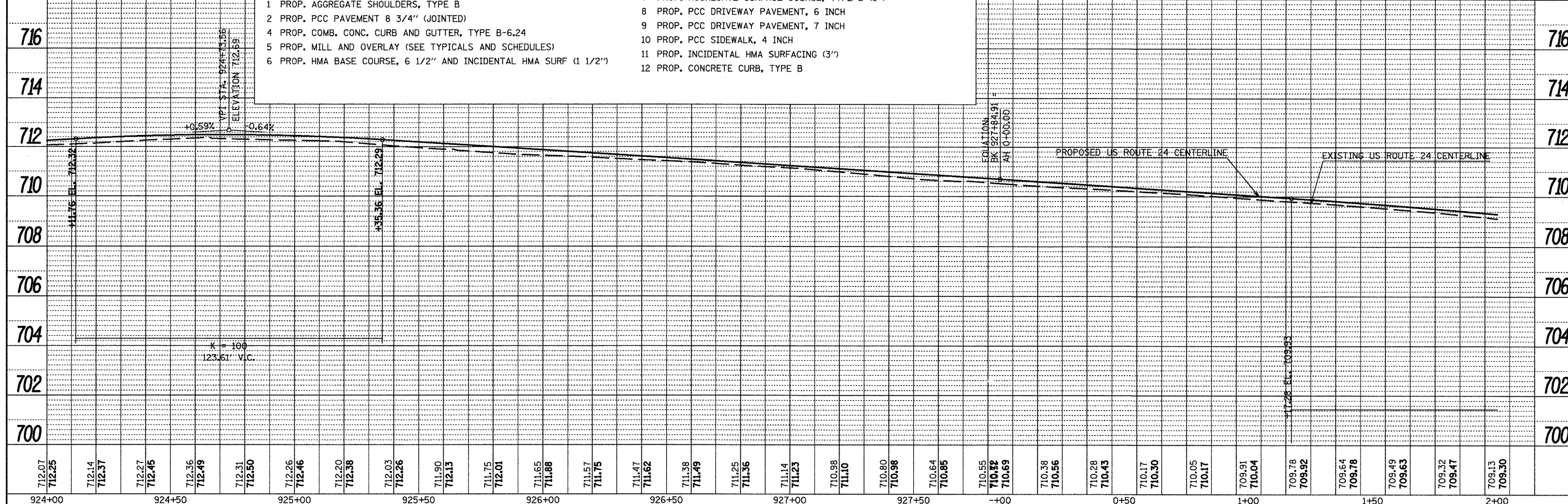
DATE	
BY	
REVIEWED	
PLANNED	
NOTED	
NO.	
NO.	
NO.	
NO.	
NO.	

DATE	
BY	
REVIEWED	
PLANNED	
NOTED	
NO.	
NO.	
NO.	
NO.	
NO.	



**LEGEND**

- |  |   |
|--|---|
| 1 PROP. AGGREGATE SHOULDERS, TYPE B                              | 7 PROP. AGGREGATE SURFACE COURSE, TYPE B (8") |
| 2 PROP. PCC PAVEMENT 8 3/4" (JOINTED)                            | 8 PROP. PCC DRIVEWAY PAVEMENT, 6 INCH         |
| 4 PROP. COMB. CONC. CURB AND GUTTER, TYPE B-6.24                 | 9 PROP. PCC DRIVEWAY PAVEMENT, 7 INCH         |
| 5 PROP. MILL AND OVERLAY (SEE TYPICALS AND SCHEDULES)            | 10 PROP. PCC SIDEWALK, 4 INCH                 |
| 6 PROP. HMA BASE COURSE, 6 1/2" AND INCIDENTAL HMA SURF (1 1/2") | 11 PROP. INCIDENTAL HMA SURFACING (3")        |
|  | 12 PROP. CONCRETE CURB, TYPE B                |



FILE NAME = plan01.dgn	USER NAME = horstjk	DESIGNED -	REVISED -	<b>STATE OF ILLINOIS DEPARTMENT OF TRANSPORTATION</b>	<b>PLAN AND PROFILE SHEETS</b>				F.A.P. RTE. 317	SECTION 16W-1, RS-3	COUNTY FULTON	TOTAL SHEETS 347	SHEET NO. 63
PLOT SCALE = 40/1826" / in.	PLOT DATE = 3/29/2012	DRAWN -	REVISED -		SCALE:	SHEET NO.	OF SHEETS	STA.	TO STA.	CONTRACT NO. 88795			
		CHECKED -	REVISED -		ILLINOIS FED. AID PROJECT								
		DATE -	REVISED -										