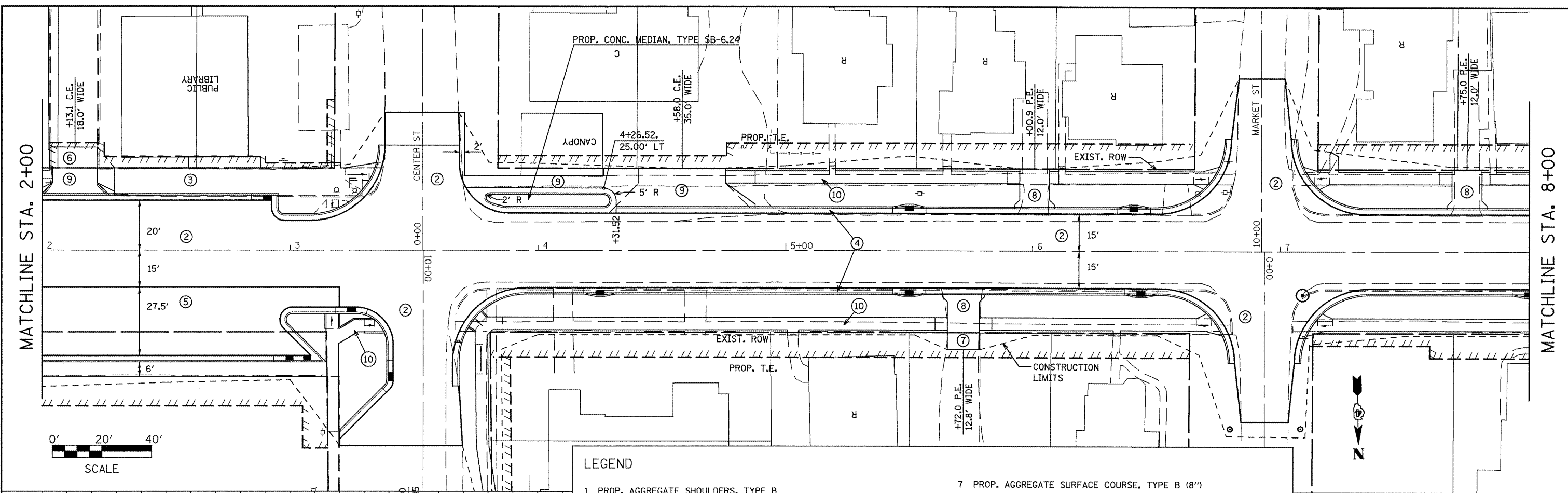


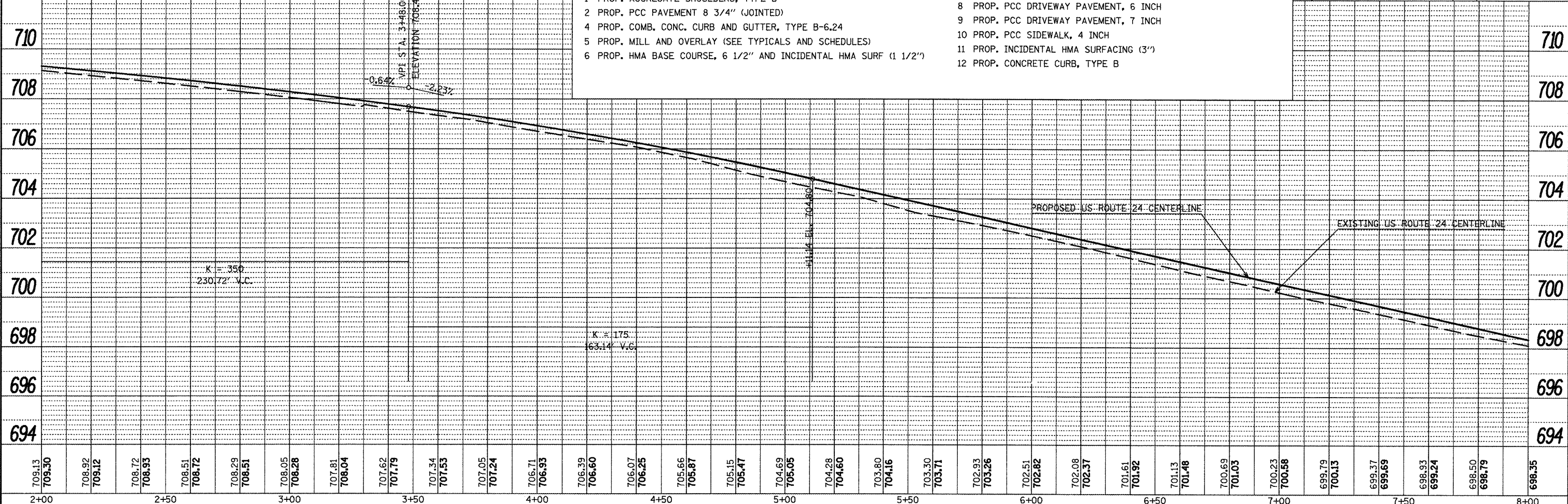
PLAN	SURVEYED	DATE
	PLOTTED	
	CHECKED	
	BY	
	NO. OF WAY CHECKED	
	NO.	
	FILE NAME	

PROFILE	SURVEYED	DATE
	PLOTTED	
	CHECKED	
	BY	
	NO. OF WAY CHECKED	
	NO.	
	FILE NAME	



**LEGEND**

1	PROP. AGGREGATE SHOULDERS, TYPE B	7	PROP. AGGREGATE SURFACE COURSE, TYPE B (8")
2	PROP. PCC PAVEMENT 8 3/4" (JOINTED)	8	PROP. PCC DRIVEWAY PAVEMENT, 6 INCH
4	PROP. COMB. CONC. CURB AND GUTTER, TYPE B-6.24	9	PROP. PCC DRIVEWAY PAVEMENT, 7 INCH
5	PROP. MILL AND OVERLAY (SEE TYPICALS AND SCHEDULES)	10	PROP. PCC SIDEWALK, 4 INCH
6	PROP. HMA BASE COURSE, 6 1/2" AND INCIDENTAL HMA SURF (1 1/2")	11	PROP. INCIDENTAL HMA SURFACING (3")
		12	PROP. CONCRETE CURB, TYPE B



FILE NAME = plan01.dgn	USER NAME = horstkj	DESIGNED -	REVISED -	<b>STATE OF ILLINOIS DEPARTMENT OF TRANSPORTATION</b>	<b>PLAN AND PROFILE SHEETS</b>			F.A.P. RTE. 317	SECTION 16W-1, RS-3	COUNTY FULTON	TOTAL SHEETS NO. 347	SHEET NO. 64
	PLOT SCALE = 48.1826' / in.	DRAWN -	REVISED -		SCALE:	SHEET NO. OF SHEETS STA.	TO STA.	CONTRACT NO. 88795				
	PLOT DATE = 3/28/2012	CHECKED -	REVISED -		ILLINOIS FED. AID PROJECT							
		DATE -	REVISED -									