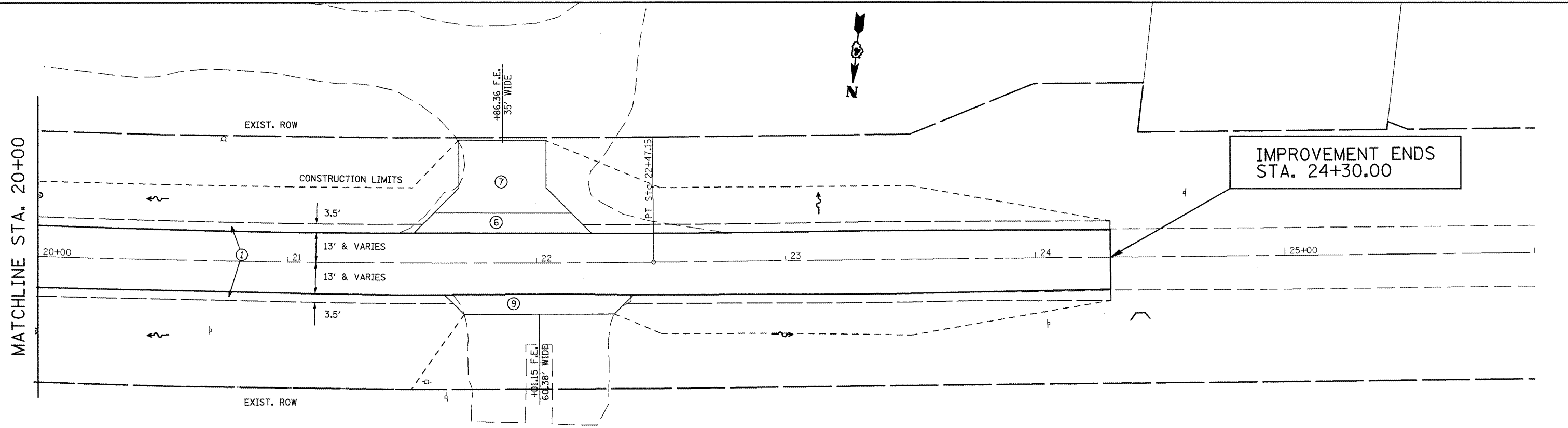
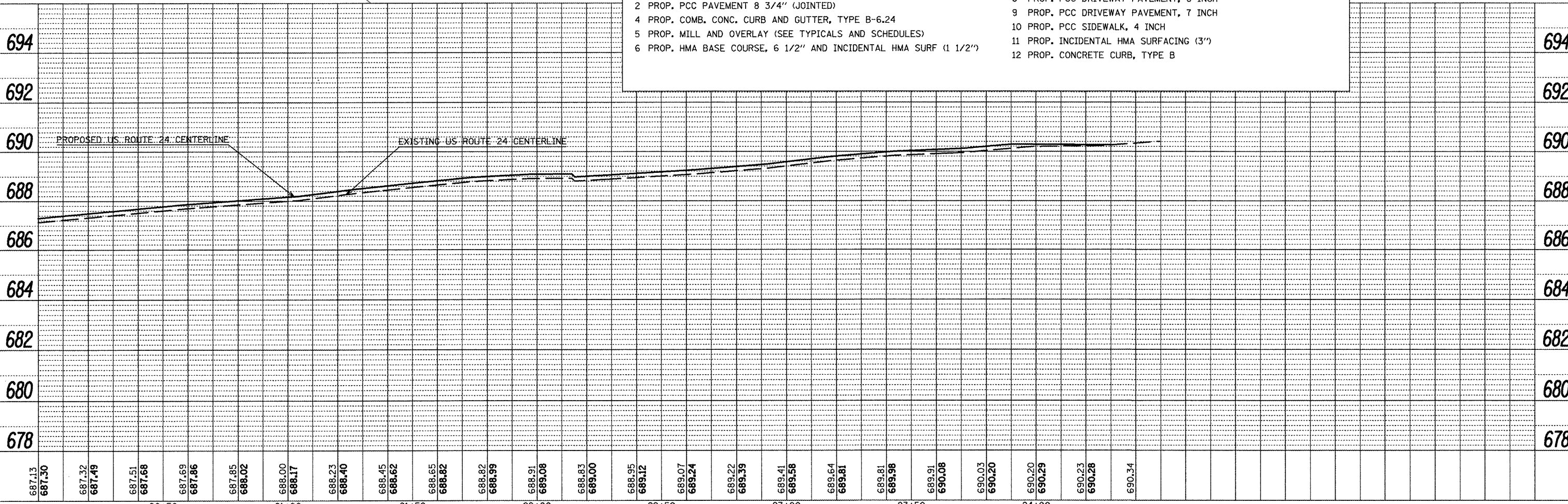
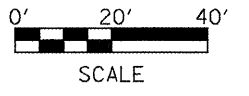


PLAN	BY	DATE
REVISIONS		
NO.	BY	DATE
1		
2		
3		
4		
5		
6		
7		
8		
9		
10		
11		
12		
13		
14		
15		
16		
17		
18		
19		
20		
21		
22		
23		
24		
25		
26		
27		
28		
29		
30		

PROFILE	BY	DATE
REVISIONS		
NO.	BY	DATE
1		
2		
3		
4		
5		
6		
7		
8		
9		
10		
11		
12		
13		
14		
15		
16		
17		
18		
19		
20		
21		
22		
23		
24		
25		
26		
27		
28		
29		
30		



- LEGEND**
- 1 PROP. AGGREGATE SHOULDERS, TYPE B
 - 2 PROP. PCC PAVEMENT 8 3/4" (JOINTED)
 - 4 PROP. COMB. CONC. CURB AND GUTTER, TYPE B-6.24
 - 5 PROP. MILL AND OVERLAY (SEE TYPICALS AND SCHEDULES)
 - 6 PROP. HMA BASE COURSE, 6 1/2" AND INCIDENTAL HMA SURF (1 1/2")
 - 7 PROP. AGGREGATE SURFACE COURSE, TYPE B (8")
 - 8 PROP. PCC DRIVEWAY PAVEMENT, 6 INCH
 - 9 PROP. PCC DRIVEWAY PAVEMENT, 7 INCH
 - 10 PROP. PCC SIDEWALK, 4 INCH
 - 11 PROP. INCIDENTAL HMA SURFACING (3")
 - 12 PROP. CONCRETE CURB, TYPE B



FILE NAME = plan01.dgn	USER NAME = horstjk	DESIGNED -	REVISED -	STATE OF ILLINOIS DEPARTMENT OF TRANSPORTATION	PLAN AND PROFILE SHEETS					F.A.P. RTE. 317	SECTION 16W-1, RS-3	COUNTY FULTON	TOTAL SHEETS 347	SHEET NO. 67
	PLOT SCALE = 40.0000' / in.	DRAWN -	REVISED -		SCALE:	SHEET NO.	OF	SHEETS	STA.	TO STA.	CONTRACT NO. 88795			
	PLOT DATE = 3/28/2012	CHECKED -	REVISED -		ILLINOIS FED. AID PROJECT									
		DATE -	REVISED -											