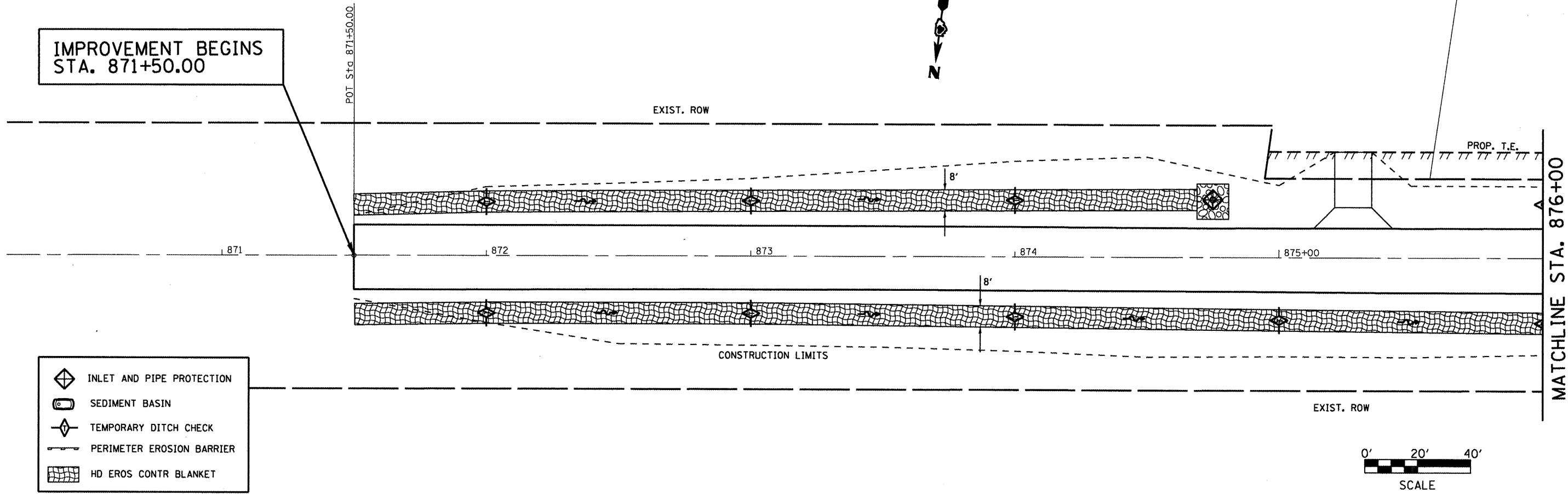
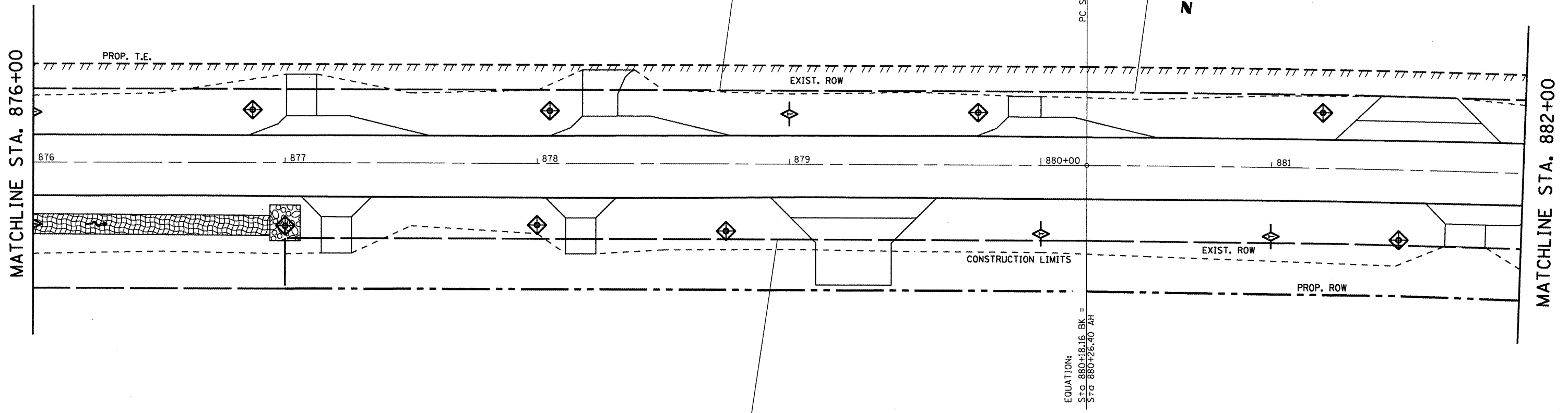
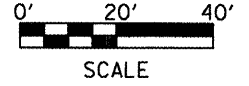


IMPROVEMENT BEGINS
STA. 871+50.00



- INLET AND PIPE PROTECTION
- SEDIMENT BASIN
- TEMPORARY DITCH CHECK
- PERIMETER EROSION BARRIER
- HD EROS CONTR BLANKET



EQUATION:
Sta. 880+18.16 BK =
Sta. 880+26.40 AH

FILE NAME = plan01.dgn	USER NAME = horatkj	DESIGNED -	REVISED -	STATE OF ILLINOIS DEPARTMENT OF TRANSPORTATION	EROSION AND SEDIMENT CONTROL	F.A.P. RTE. 317	SECTION 16W-1, RS-3	COUNTY FULTON	TOTAL SHEETS 347	SHEET NO. 93	
	PLOT SCALE = 48.0000' / 1"	DRAWN -	REVISED -			CONTRACT NO. 88795					
	PLOT DATE = 2/14/2012	CHECKED -	REVISED -			ILLINOIS FED. AID PROJECT					
		DATE -	REVISED -								