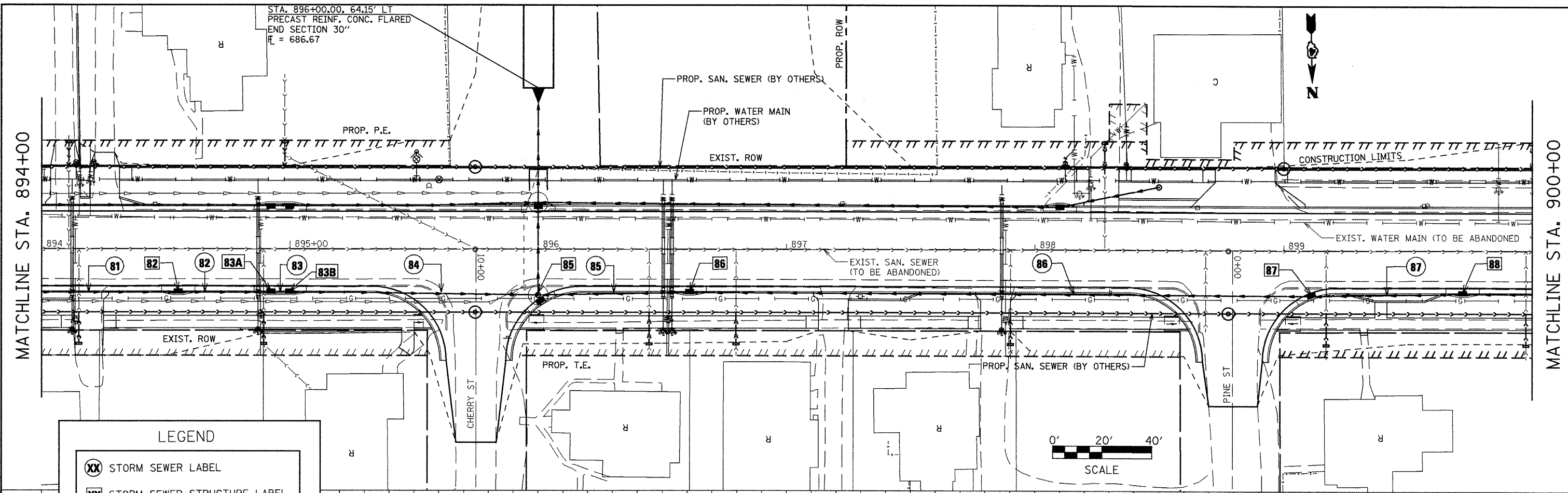


DATE: _____
 BY: _____
 SURVEYED _____
 PLOTTED _____
 ALIGNED _____
 CHECKED _____
 RT. OF WAY _____
 NOTE BOOK _____
 NO. _____
 CHECKED _____
 RT. OF WAY _____
 NOTE BOOK _____
 NO. _____
 FILE NAME _____

DATE: _____
 BY: _____
 SURVEYED _____
 PLOTTED _____
 ALIGNED _____
 CHECKED _____
 RT. OF WAY _____
 NOTE BOOK _____
 NO. _____
 CHECKED _____
 RT. OF WAY _____
 NOTE BOOK _____
 NO. _____
 FILE NAME _____



LEGEND

XX STORM SEWER LABEL

XX STORM SEWER STRUCTURE LABEL

NOTE: SEE SCHEDULES OF QUANTITIES FOR INFORMATION ON STORM SEWERS AND STRUCTURES

704			STRUCTURE #87 899+10.7, 17.0' RT INLET-MANHOLES, TYPE G-1, 5' DIAMETER GRATE ELEV. 699.16 INVERT ELEV. EAST 694.31 INVERT ELEV. WEST 694.41	STRUCTURE #88 899+72, 15.0' RT INLET-MANHOLES, TYPE G-1, 5' DIAMETER (SPECIAL) GRATE ELEV. 699.48 INVERT ELEV. EAST 694.62 INVERT ELEV. WEST 694.72	704
702					702
700	STRUCTURE #82 894+55, 15.0' RT INLET-MANHOLES, TYPE G-1, 5' DIAMETER (SPECIAL) GRATE ELEV. 697.31 INVERT ELEV. EAST 689.13 INVERT ELEV. WEST 689.03	STRUCTURE #83A 894+92.58, 15.0' RT INLET-MANHOLES, TYPE G-1, 5' DIAMETER DOUBLE (SPECIAL) GRATE ELEV. 697.25 INVERT ELEV. EAST 688.92 INVERT ELEV. WEST 688.82	STRUCTURE #85 896+00.4, 20.0' RT INLET-MANHOLES, TYPE G-1, 8' DIAMETER GRATE ELEV. 697.54 INVERT ELEV. SOUTH 687.89 INVERT ELEV. EAST 688.29 INVERT ELEV. WEST 693.16	STRUCTURE #86 896+61, 15.0' RT INLET-MANHOLES, TYPE G-1, 5' DIAMETER (SPECIAL) GRATE ELEV. 697.91 INVERT ELEV. EAST 693.34 INVERT ELEV. WEST 693.44	700
698					698
696			STRUCTURE #83B 894+99.58, 15.0' RT INLET-MANHOLES, TYPE G-1, 5' DIAMETER DOUBLE (SPECIAL) GRATE ELEV. 697.25 INVERT ELEV. EAST 688.80 INVERT ELEV. WEST 688.70		
694					694
692					692
690					690
688					688