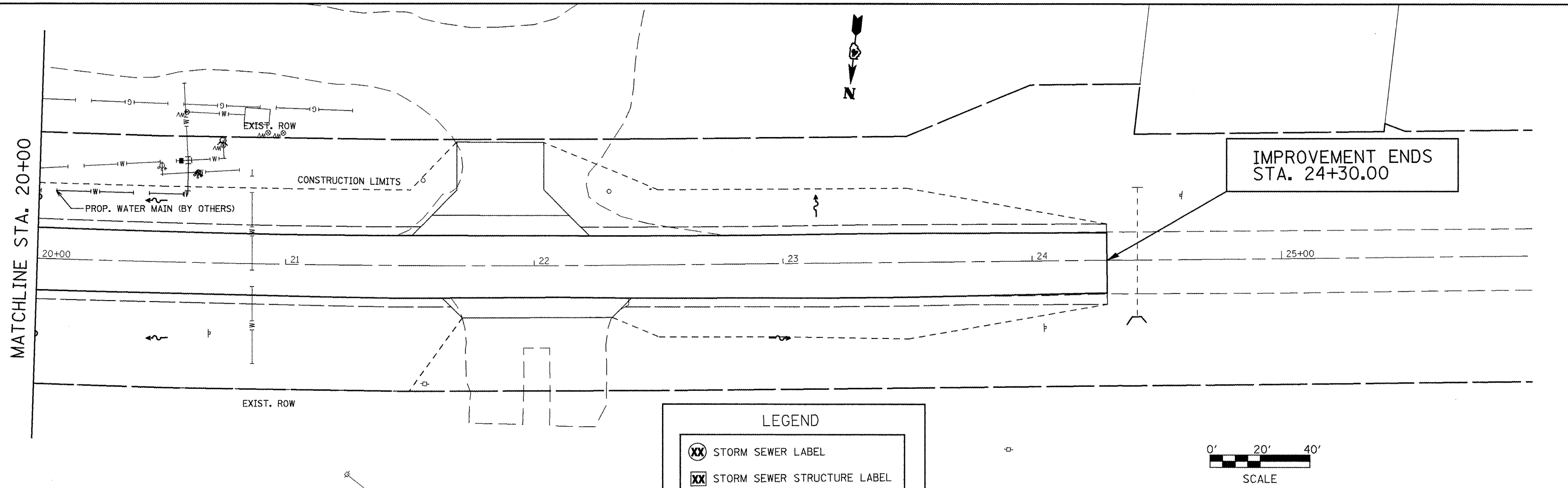


DATE
BY
REVISIONS
PLANNED
CHECKED
ALIGNMENT
NO.
NOTE BOOK
NO.
DRAWN
NO.
DATE
FILE NAME

DATE
BY
REVISIONS
PLANNED
CHECKED
GRADES
NO.
NOTE BOOK
NO.
DRAWN
NO.
DATE
FILE NAME

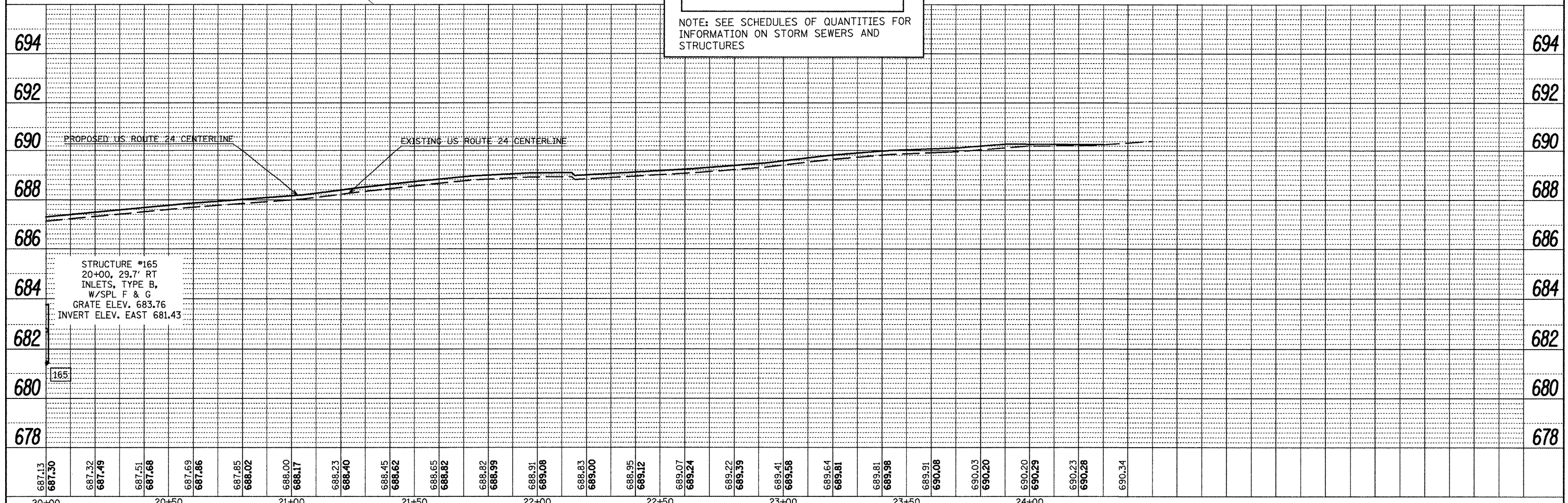
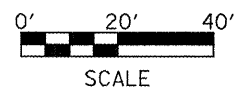


IMPROVEMENT ENDS
STA. 24+30.00

LEGEND

- ⊗ STORM SEWER LABEL
- ⊗ STORM SEWER STRUCTURE LABEL

NOTE: SEE SCHEDULES OF QUANTITIES FOR INFORMATION ON STORM SEWERS AND STRUCTURES



FILE NAME = plan01.dgn	USER NAME = horatkj	DESIGNED -	REVISED -	STATE OF ILLINOIS DEPARTMENT OF TRANSPORTATION	DRAINAGE AND UTILITIES SHEETS - NORTH SIDE				F.A.P. RTE. 317	SECTION 16W-1, RS-3	COUNTY FULTON	TOTAL SHEETS 347	SHEET NO. 173
	PLOT SCALE = 48.0000' / in.	DRAWN -	REVISED -		SCALE:	SHEET NO.	OF	SHEETS	STA.	TO STA.	CONTRACT NO. 88795		
	PLOT DATE = 3/20/2012	CHECKED -	REVISED -		ILLINOIS FED. AID PROJECT								
		DATE -	REVISED -										