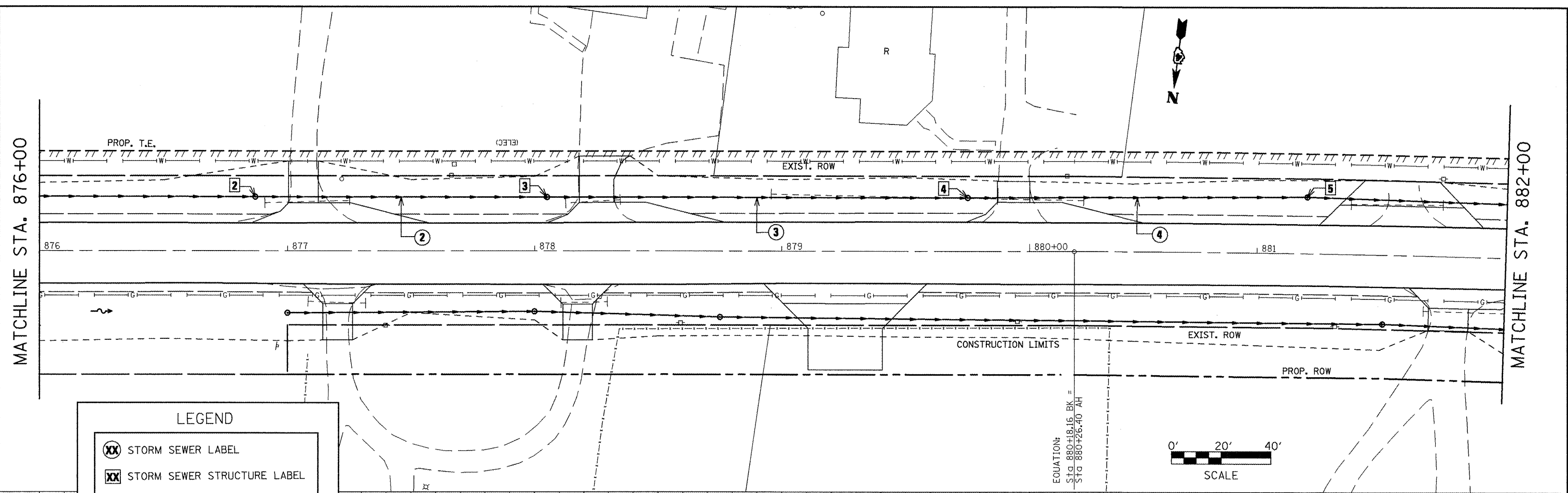


DATE	
BY	
PLAN	
NO.	
DATE	
BY	
PROFILE	
NO.	
DATE	
BY	
PLAN	
NO.	
DATE	
BY	

DATE	
BY	
PROFILE	
NO.	
DATE	
BY	
PLAN	
NO.	
DATE	
BY	

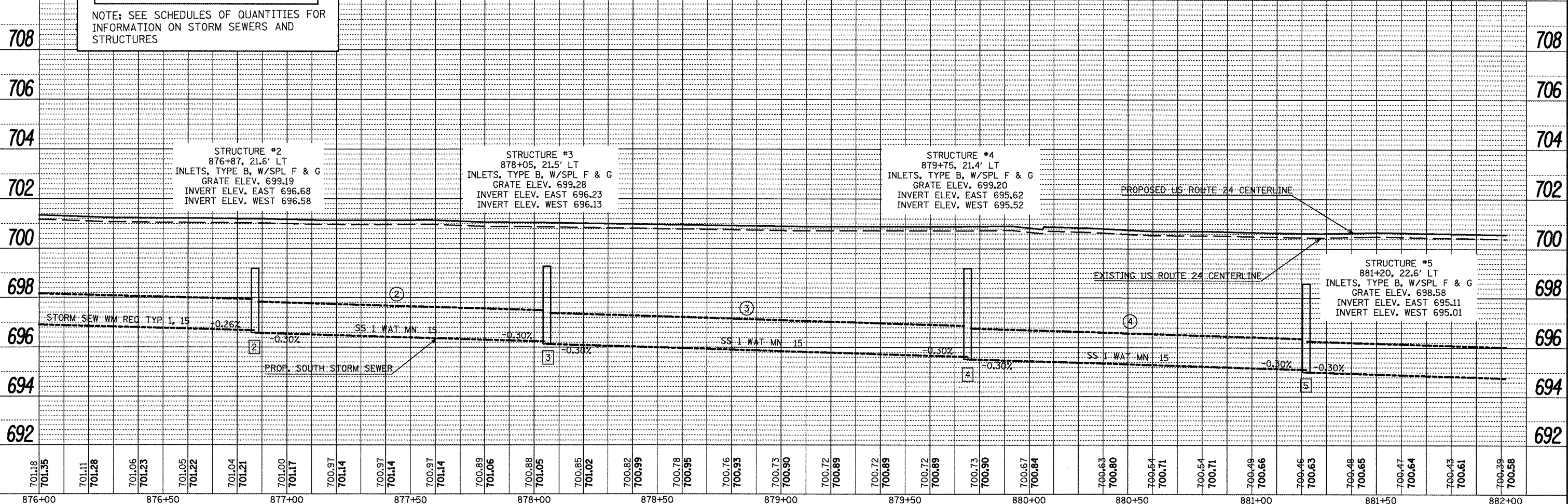
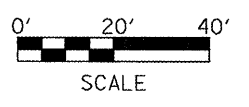


**LEGEND**

XX STORM SEWER LABEL

XX STORM SEWER STRUCTURE LABEL

NOTE: SEE SCHEDULES OF QUANTITIES FOR INFORMATION ON STORM SEWERS AND STRUCTURES



STRUCTURE #2  
876+87, 21.6' LT  
INLETS, TYPE B, W/SPL F & G  
GRATE ELEV. 699.19  
INVERT ELEV. EAST 696.68  
INVERT ELEV. WEST 696.58

STRUCTURE #3  
878+05, 21.5' LT  
INLETS, TYPE B, W/SPL F & G  
GRATE ELEV. 699.28  
INVERT ELEV. EAST 696.23  
INVERT ELEV. WEST 696.13

STRUCTURE #4  
879+75, 21.4' LT  
INLETS, TYPE B, W/SPL F & G  
GRATE ELEV. 699.20  
INVERT ELEV. EAST 695.62  
INVERT ELEV. WEST 695.52

STRUCTURE #5  
881+20, 22.6' LT  
INLETS, TYPE B, W/SPL F & G  
GRATE ELEV. 698.58  
INVERT ELEV. EAST 695.11  
INVERT ELEV. WEST 695.01

FILE NAME = plan01.dgn	USER NAME = horstkj	DESIGNED -	REVISED -	STATE OF ILLINOIS DEPARTMENT OF TRANSPORTATION	DRAINAGE AND UTILITIES SHEETS - SOUTH SIDE	F.A.P. RTE. 317	SECTION 16W-1, RS-3	COUNTY FULTON	TOTAL SHEETS 347	SHEET NO. 115			
PLOT SCALE = 48,1826' / 1" =	DRAWN -	REVISED -	SCALE:			SHEET NO.	OF SHEETS	STA.	TO STA.	CONTRACT NO. 88795			
PLOT DATE = 3/28/2012	CHECKED -	REVISED -	ILLINOIS FED. AID PROJECT										
DATE -	DATE -	REVISED -											