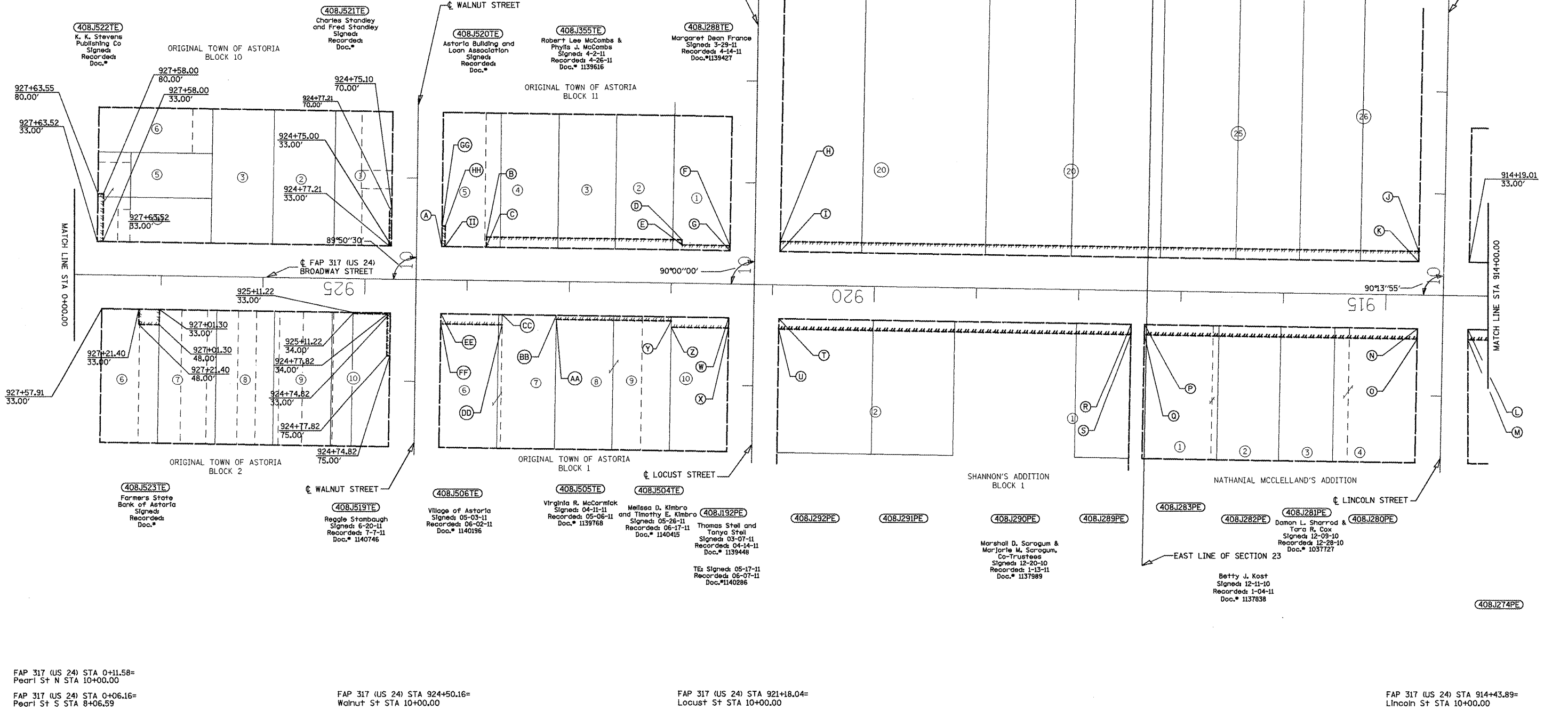


SECT. 23 T 3N R 1E 4TH PM

SECT. 24 T 3N R 1E 4TH PM



- (A) 924+25.50  
33.00'
- (B) 923+82.00  
43.00'
- (C) 923+82.00  
33.00'
- (D) 921+90.00  
43.00'
- (E) 921+90.00  
38.00'
- (F) 921+42.68  
38.00'
- (G) 921+42.69  
33.00'
- (H) 920+93.16  
43.00'
- (I) 920+93.19  
33.00'
- (J) 914+68.47  
43.00'
- (K) 914+68.51  
33.00'
- (L) 914+19.27  
33.00'
- (M) 914+19.13  
43.00'
- (N) 914+68.77  
33.00'
- (O) 914+68.81  
43.00'
- (P) 917+35.07  
33.00'
- (Q) 917+35.11  
43.00'
- (R) 917+48.32  
33.00'
- (S) 917+48.36  
43.00'
- (T) 920+93.29  
33.00'
- (U) 920+93.29  
43.00'
- (V) 921+42.69  
33.00'
- (W) 921+42.79  
33.00'
- (X) 921+42.79  
43.00'
- (Y) 921+99.30  
37.00'
- (Z) 921+99.30  
43.00'
- (AA) 923+12.32  
37.00'
- (BB) 923+12.32  
33.00'
- (CC) 923+65.33  
33.00'
- (DD) 923+65.33  
43.00'
- (EE) 924+25.32  
33.00'
- (FF) 924+25.32  
43.00'
- (GG) 924+25.56  
53.36'
- (HH) 924+22.40  
53.36'
- (II) 924+22.47  
33.00'



FAP 317 (US 24) STA 0+11.58=  
Pearl St + N STA 10+00.00

FAP 317 (US 24) STA 0+06.16=  
Pearl St + S STA 8+06.59

FAP 317 (US 24) STA 924+50.16=  
Walnut St STA 10+00.00

FAP 317 (US 24) STA 921+18.04=  
Locust St STA 10+00.00

FAP 317 (US 24) STA 914+43.89=  
Lincoln St STA 10+00.00

FOR OLD R.O.W. SEE  
FILE 10 SHEET 25 PLATFILE: 508

PROJECT: 24-88795 FILE: job795.gpk inp02795.plt R0W.dgn	USER NAME = bayermj	DESIGNED -	REVISED -	<b>STATE OF ILLINOIS</b> <b>DEPARTMENT OF TRANSPORTATION</b>	<b>RIGHT OF WAY PLANS</b>		F.A.P. RTE. = 317	SECTION = 16W-1, RS-3	COUNTY = FULTON	TOTAL SHEETS = 347	SHEET NO. = 133
	PLOT SCALE = 200.9132' / in.	CHECKED - PCF	REVISED -		PROJECT =	STA. 871+50.00 TO STA. 25+00.00	CATALOG NO. 033502-00D	CONTRACT NO. 88795			
	PLOT DATE = 2/17/2012	DATE = 12-10	REVISED -		SHEET NO. 3 OF 6 SHEETS	ILLINOIS FED. AID PROJECT					