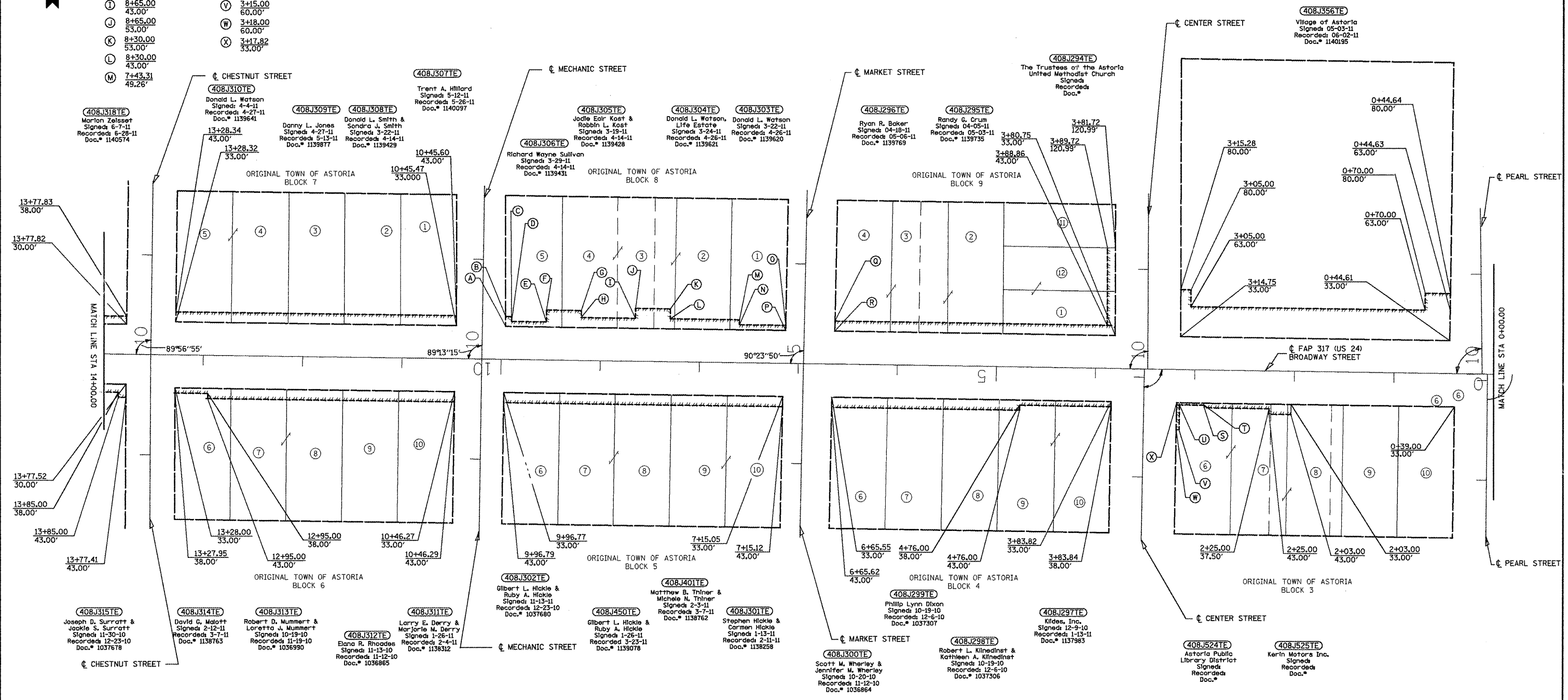


SECT. 23 T 3N R 1E 4TH PM



- (A) 9+95.96
33.00'
- (B) 9+96.10
43.00'
- (C) 9+90.00
43.00'
- (D) 9+90.00
38.00'
- (E) 9+55.00
38.00'
- (F) 9+55.00
50.00'
- (G) 9+20.00
50.00'
- (H) 9+20.00
43.00'
- (I) 8+65.00
43.00'
- (J) 8+65.00
53.00'
- (K) 8+30.00
53.00'
- (L) 8+30.00
43.00'
- (M) 7+43.31
49.26'
- (N) 7+60.00
38.00'
- (O) 7+13.07
38.00'
- (P) 7+13.10
33.00'
- (Q) 6+63.53
43.00'
- (R) 6+63.60
33.00'
- (S) 2+90.00
37.50'
- (T) 2+90.00
35.00'
- (U) 3+15.00
35.00'
- (V) 3+15.00
60.00'
- (W) 3+18.00
60.00'
- (X) 3+17.82
33.00'



FAP 317 (US 24) STA 13+53.03= Chestnut St STA 10+00.00

FAP 317 (US 24) STA 10+19.36= Mechanic St STA 10+00.00

FAP 317 (US 24) STA 6+94.69= Market St STA 5+00.00

FAP 317 (US 24) STA 3+50.73= Center St S STA 8+08.35

FAP 317 (US 24) STA 3+47.36= Center St N STA 10+00.00

FAP 317 (US 24) STA 0+11.58= Pearl St N STA 10+00.00

FAP 317 (US 24) STA 0+06.16= Pearl St S STA 8+06.59

FOR OLD R.O.W. SEE FILE 10 SHEET 25

PLATFILE: 508

PROJECT: 24.88795 FILE: Job795.gpk rmp02795.dwg ROW.dgn	USER NAME = boyer-mj	DESIGNED -	REVISED -	STATE OF ILLINOIS DEPARTMENT OF TRANSPORTATION	RIGHT OF WAY PLANS		F.A.P. RTE. 317	SECTION 16W-1, RS-3	COUNTY FULTON	TOTAL SHEETS 347	SHEET NO. 134
	PLOT SCALE = 200.9132' / in.	DRAWN - JES	REVISED -		PROJECT	STA. 871+50.00 TO STA. 25+00.00	CATALOG NO. 033502-00D	CONTRACT NO. 88795			
	DATE = 2/17/2012	CHECKED - PCF	REVISED -		SHEET NO. 2 OF 6 SHEETS		FED. ROAD DIST. NO. [ILLINOIS] FED. AID PROJECT				
		DATE = 12-10	REVISED -								