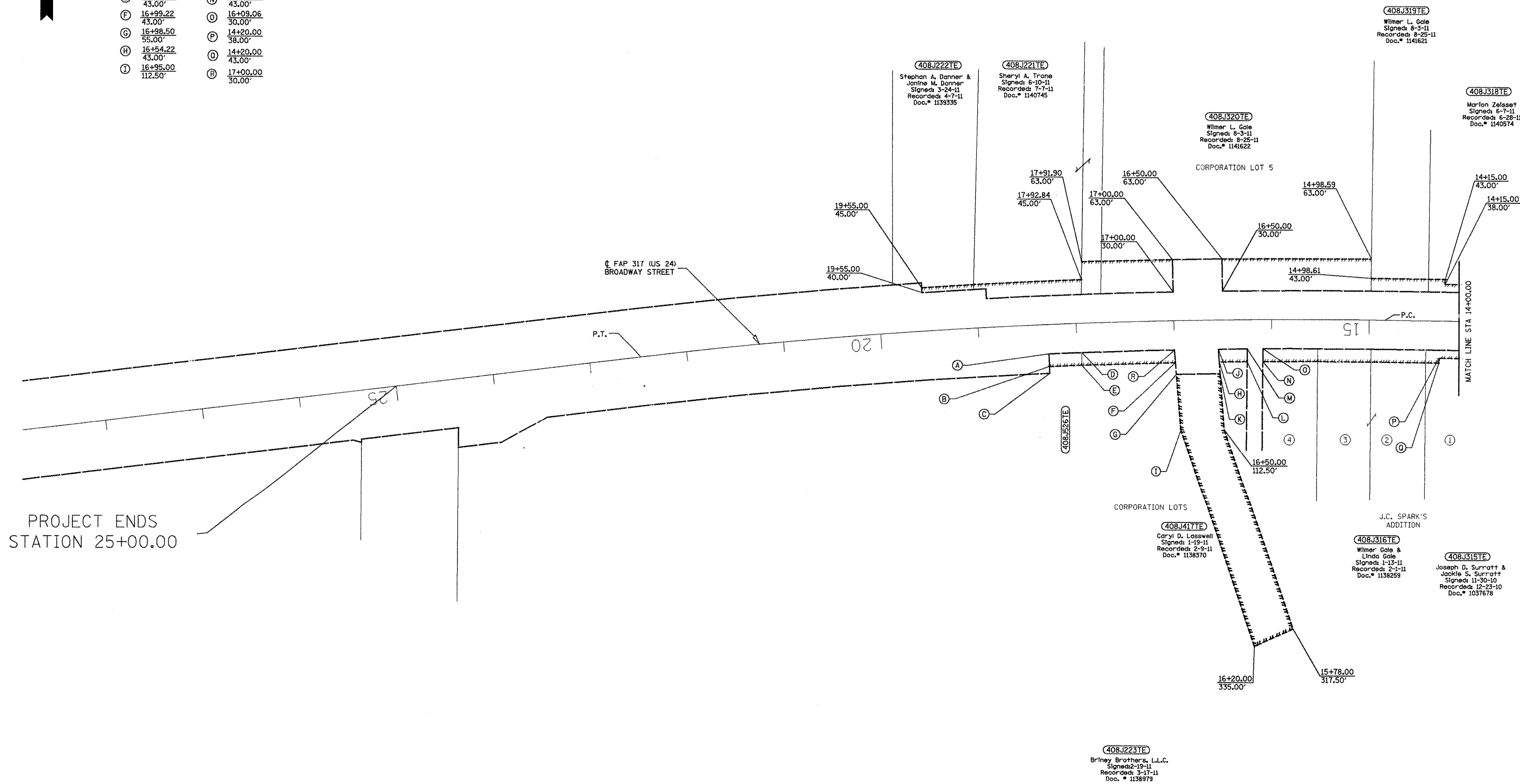


SECT. 23 T 3N R 1E 4TH PM



- (A) 18+29.00  
30.00'
- (B) 18+29.00  
43.00'
- (C) 18+29.00  
50.00'
- (D) 17+95.23  
30.00'
- (E) 17+95.84  
43.00'
- (F) 16+99.22  
43.00'
- (G) 16+98.50  
55.00'
- (H) 16+54.22  
43.00'
- (I) 16+95.00  
112.50'
- (J) 16+55.00  
30.00'
- (K) 16+53.50  
55.00'
- (L) 16+25.36  
43.00'
- (M) 16+25.14  
30.00'
- (N) 16+09.23  
43.00'
- (O) 16+09.06  
30.00'
- (P) 14+20.00  
58.00'
- (Q) 14+20.00  
43.00'
- (R) 17+00.00  
30.00'



PROJECT ENDS  
STATION 25+00.00

FOR OLD R.O.W. SEE  
FILE 10 SHEET 25

PLATFILE: 508

PROJECT: 24-88795  
FILE: job795.gpk  
rnp02795.apf  
R0W.dgn

USER NAME = boyer.m.j	DESIGNED -	REVISED -
PLOT SCALE = 200.0/32' / in.	DRAWN - JES	REVISED -
PLOT DATE = 2/17/2012	CHECKED - PCF	REVISED -
	DATE -	REVISED -

**STATE OF ILLINOIS  
DEPARTMENT OF TRANSPORTATION**

RIGHT OF WAY PLANS		
PROJECT	317	SECTION 16W-1, RS-3
SCALE: 1" = 50'	SHEET NO. 1 OF 6 SHEETS	STA. 871+50.00 TO STA. 25+00.00

F.A.P. RTE. 317	SECTION 16W-1, RS-3	COUNTY FULTON	TOTAL SHEETS 347	SHEET NO. 135
CATALOG NO. 033502-00D		CONTRACT NO. 88795		
FED. ROAD DIST. NO. ILLINOIS		FED. AID PROJECT		