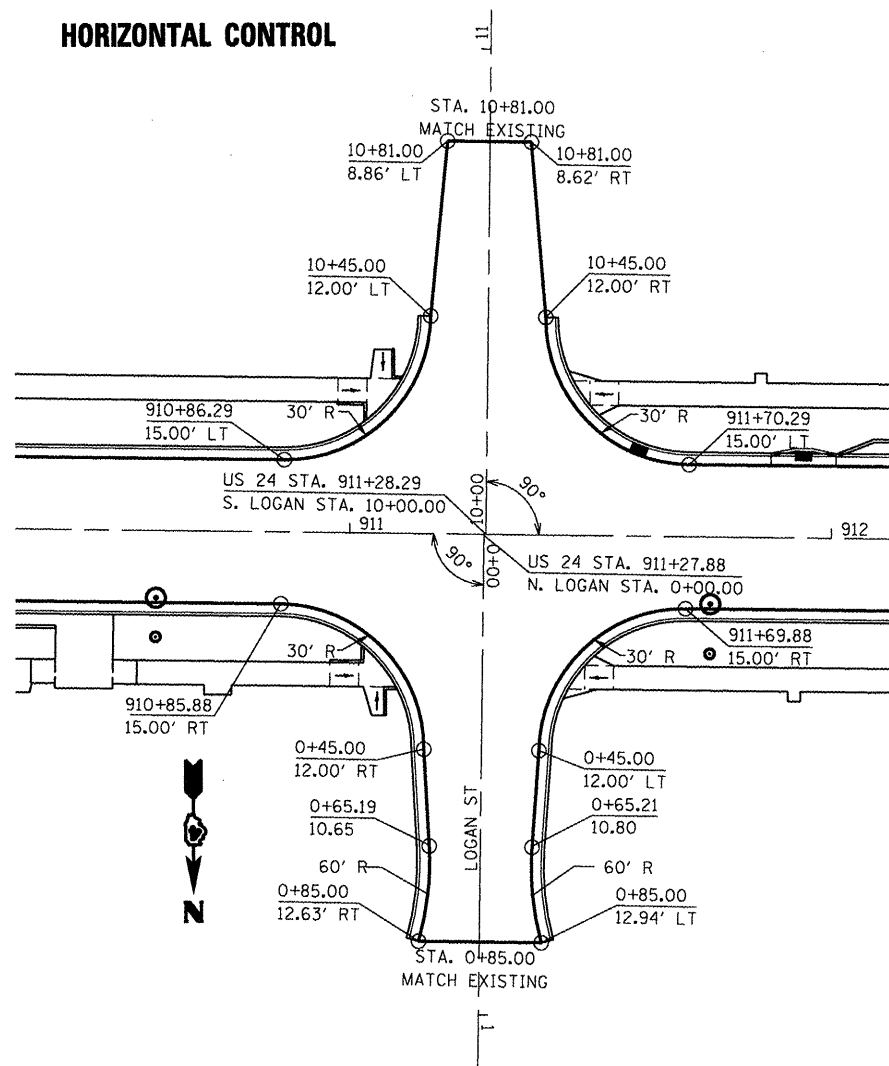


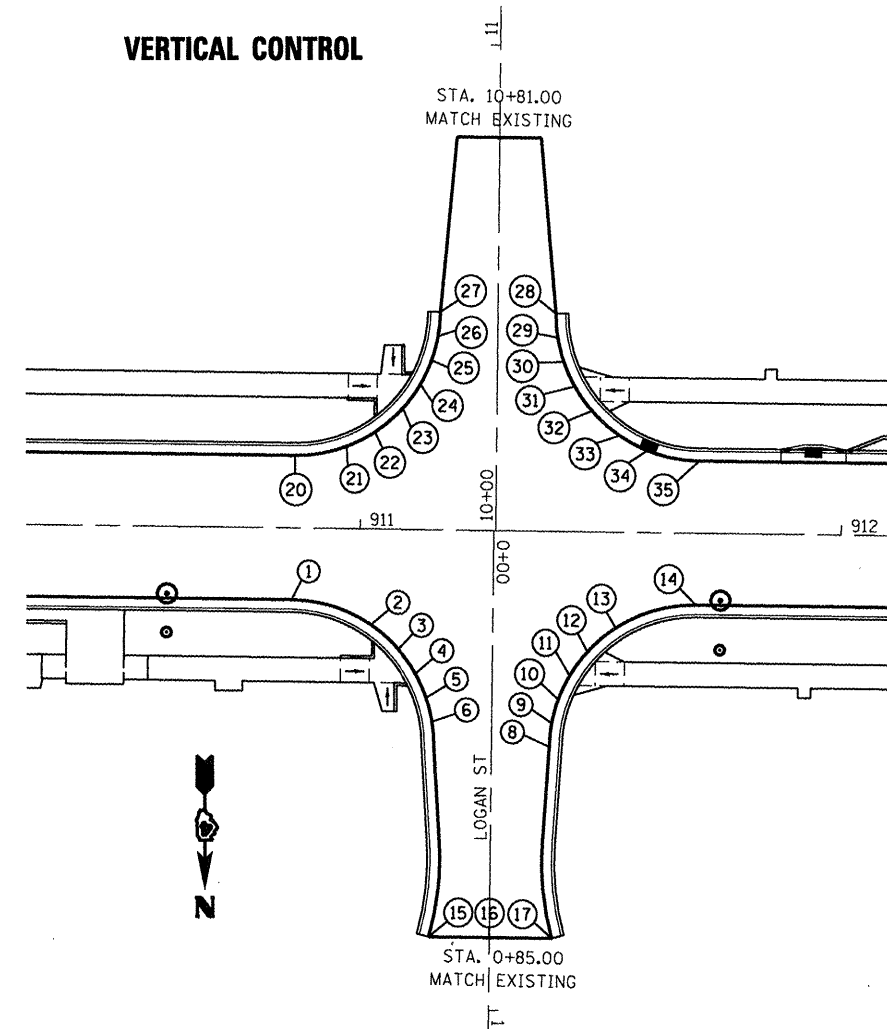
**HORIZONTAL CONTROL**



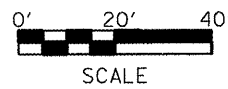
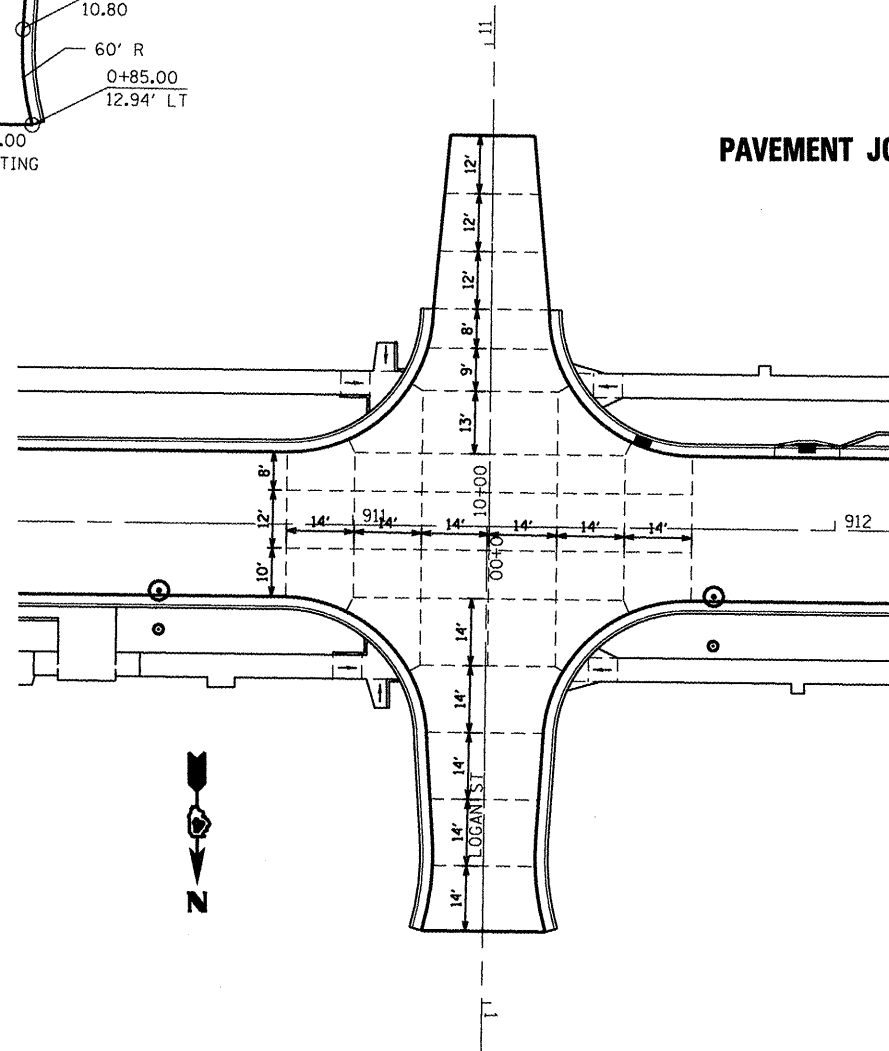
**NOTES:**

1. SEE SIDEROAD PROFILES.
2. TYPICAL TRANSVERSE JOINT SPACING ON US 24 BETWEEN INTERSECTIONS SHALL BE 14'.

**VERTICAL CONTROL**



**PAVEMENT JOINTS**



LOCATION	STATION	OFFSET	ELEVATION
N. LOGAN ST			
1	0+15.00	42.00	704.37
2	0+20.00	25.42	704.45
3	0+25.00	19.64	704.41
4	0+30.00	16.02	704.37
5	0+35.00	13.72	704.33
6	0+40.00	12.42	704.29
7	0+45.00	12.00	704.24
8	0+45.00	12.00	704.24
9	0+40.00	12.42	704.29
10	0+35.00	13.72	704.34
11	0+30.00	16.02	704.40
12	0+25.00	19.64	704.47
13	0+20.00	25.42	704.55
14	0+15.00	42.00	704.73
15	0+85.00	12.63	703.57
16	0+85.00	0.00	704.24
17	0+85.00	12.94	703.33

LOCATION	STATION	OFFSET	ELEVATION
S. LOGAN ST			
20	10+15.00	42.00	704.37
21	10+17.00	31.23	704.43
22	10+20.00	25.42	704.51
23	10+25.00	19.64	704.60
24	10+30.00	16.02	704.70
25	10+35.00	13.72	704.79
26	10+40.00	12.42	704.88
27	10+45.00	12.00	704.97
28	10+45.00	12.00	704.97
29	10+40.00	12.42	704.93
30	10+35.00	13.72	704.88
31	10+30.00	16.02	704.83
32	10+25.00	19.64	704.77
33	10+20.00	25.42	704.70
34	10+17.00	31.23	704.64
35	10+15.00	42.00	704.73