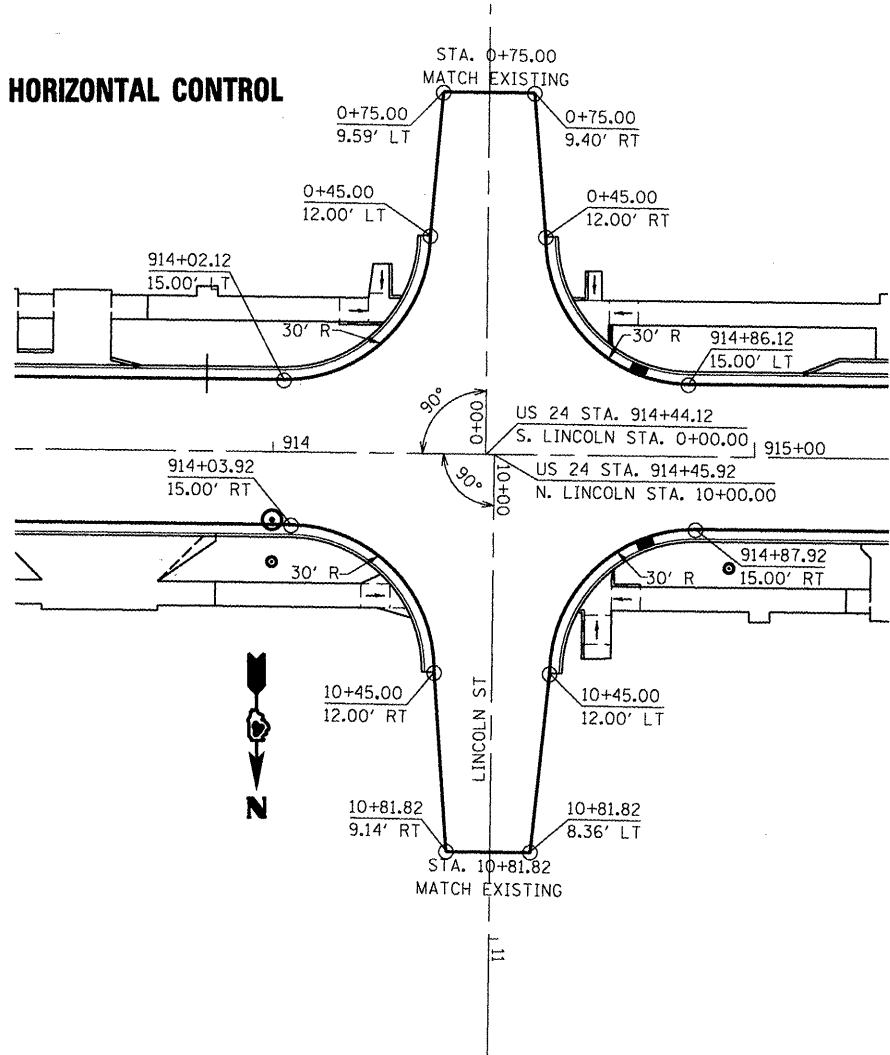


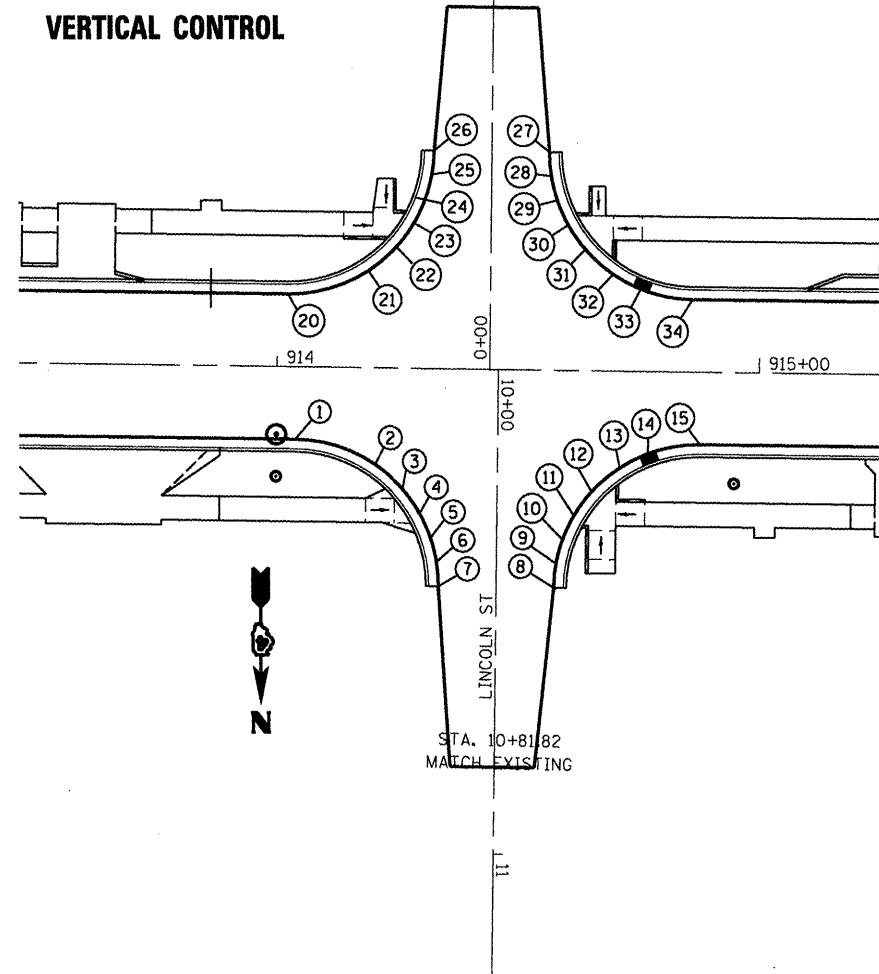
HORIZONTAL CONTROL



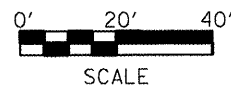
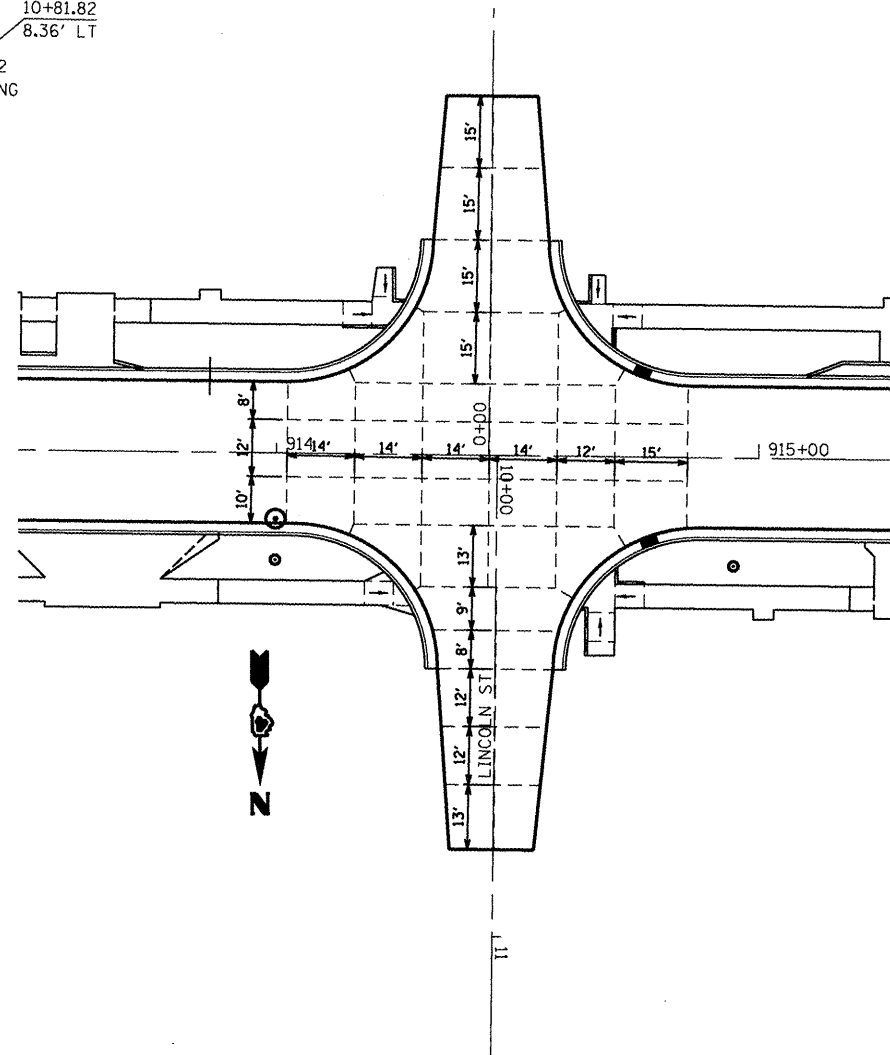
NOTES:

1. SEE SIDEROAD PROFILES.
2. TYPICAL TRANSVERSE JOINT SPACING ON US 24 BETWEEN INTERSECTIONS SHALL BE 14'.

VERTICAL CONTROL



PAVEMENT JOINTS



LOCATION	STATION	OFFSET	ELEVATION
N. LINCOLN ST			
1	10+15.00	42.00	705.74
2	10+20.00	25.42	705.86
3	10+25.00	19.64	705.96
4	10+30.00	16.02	706.07
5	10+35.00	13.72	706.16
6	10+40.00	12.42	706.26
7	0+45.00	12.00	706.34
8	0+45.00	12.00	706.34
9	0+40.00	12.42	706.27
10	0+35.00	13.72	706.20
11	0+30.00	16.02	706.14
12	0+25.00	19.64	706.08
13	0+20.00	25.42	706.03
14	0+17.00	31.23	705.98
15	0+15.00	42.00	706.10

LOCATION	STATION	OFFSET	ELEVATION
S. LINCOLN ST			
20	0+15.00	42.00	705.73
21	0+20.00	25.42	705.83
22	0+25.00	19.64	705.90
23	0+30.00	16.02	705.99
24	0+35.00	13.72	706.05
25	0+40.00	12.42	706.13
26	0+45.00	12.00	706.18
27	0+45.00	12.00	706.18
28	0+40.00	12.42	706.15
29	0+35.00	13.72	706.12
30	0+30.00	16.02	706.09
31	0+25.00	19.64	706.05
32	0+20.00	25.42	706.01
33	0+17.00	31.23	705.97
34	0+15.00	42.00	706.09