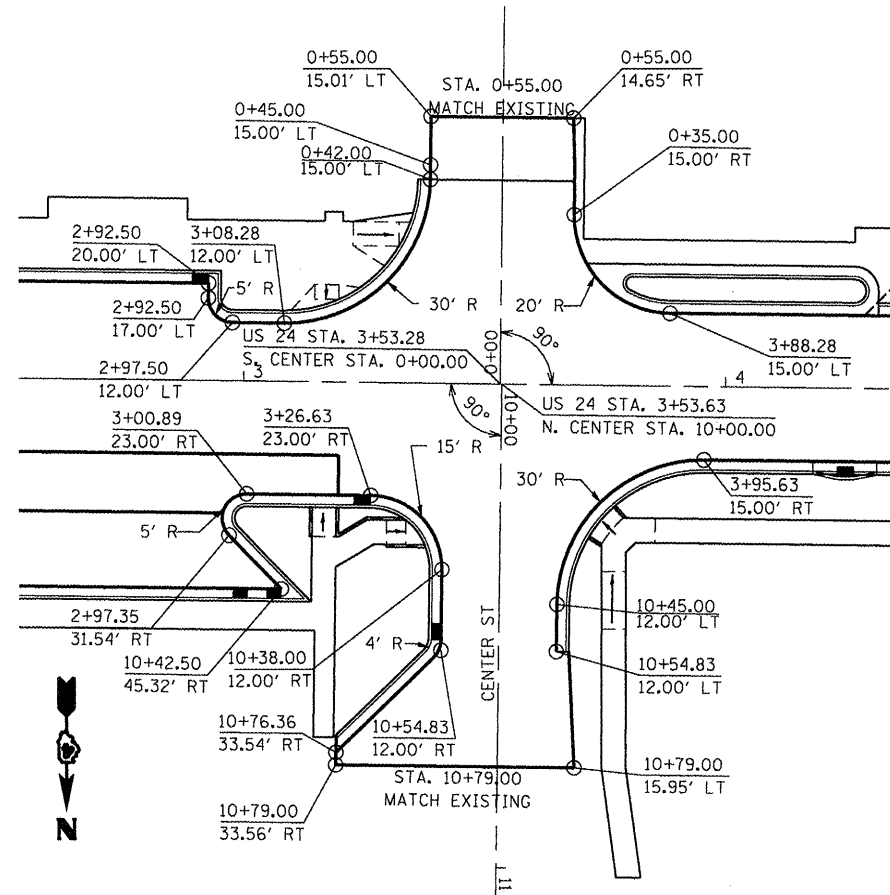
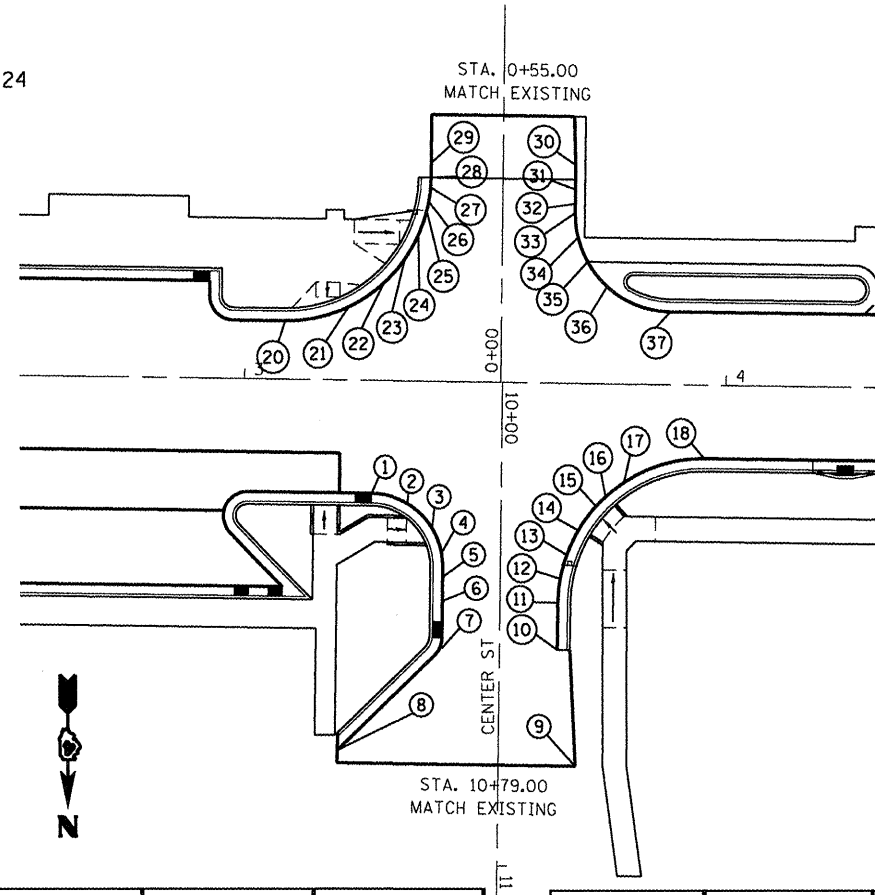


HORIZONTAL CONTROL

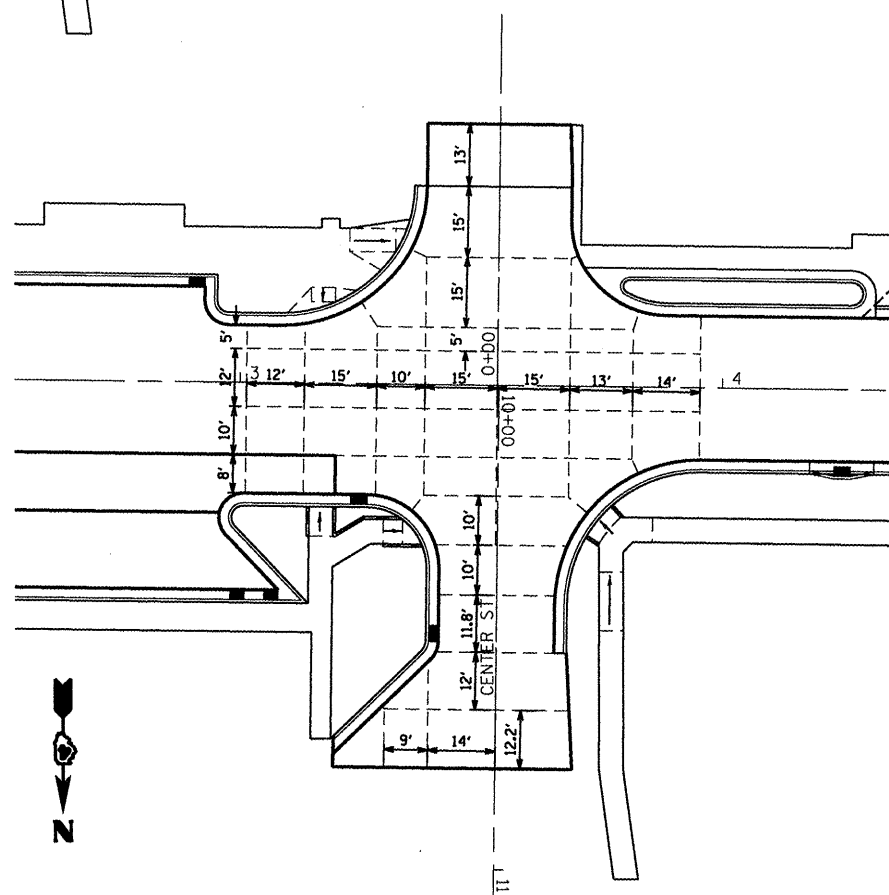


- NOTES:
 1. SEE SIDEROAD PROFILES.
 2. TYPICAL TRANSVERSE JOINT SPACING ON US 24 BETWEEN INTERSECTIONS SHALL BE 14'.

VERTICAL CONTROL



PAVEMENT JOINTS



LOCATION	STATION	OFFSET	ELEVATION
N. CENTER ST			
1	10+23.00	27.00	707.67
2	10+25.00	19.52	707.71
3	10+30.00	14.31	707.76
4	10+35.00	12.30	707.81
5	10+40.00	12.00	707.85
6	10+45.00	12.00	707.92
7	10+54.83	12.00	708.11
8	10+76.36	33.54	709.19
9	10+79.00	15.95	708.92
10	10+54.83	12.00	708.11
11	10+45.00	12.00	707.88
12	10+40.00	12.42	707.78
13	10+35.00	13.72	707.68
14	10+30.00	16.02	707.58
15	10+25.00	19.64	707.49
16	10+23.00	21.60	707.44
17	10+20.00	25.42	707.38
18	10+15.00	42.00	706.78

LOCATION	STATION	OFFSET	ELEVATION
S. CENTER ST			
20	0+12.00	45.00	708.00
21	0+15.00	31.92	707.61
22	0+20.00	24.60	707.25
23	0+25.00	20.28	706.98
24	0+30.00	17.50	706.88
25	0+35.00	15.83	706.78
26	0+37.00	15.42	706.74
27	0+40.00	15.07	706.62
28	0+42.00	15.00	706.53
29	0+45.00	15.00	706.40
30	0+45.00	15.00	706.40
31	0+40.00	15.00	706.60
32	0+37.00	15.00	706.72
33	0+35.00	15.00	706.76
34	0+30.00	15.64	706.85
35	0+25.00	17.68	706.92
36	0+20.00	21.77	706.95
37	0+15.00	35.00	706.89