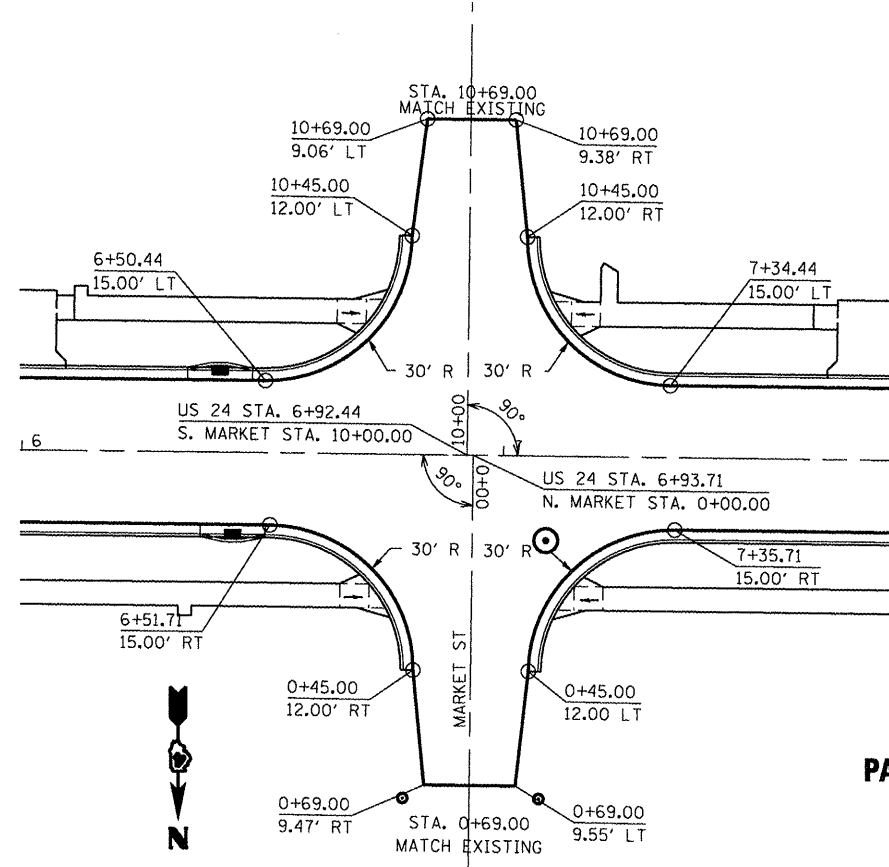
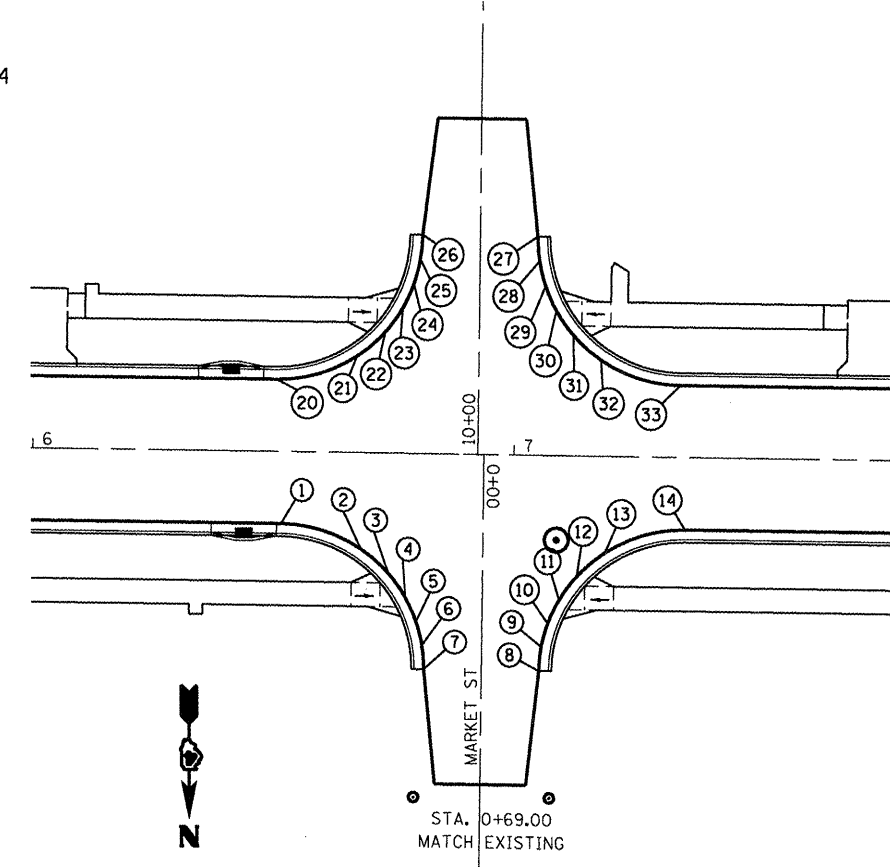


**HORIZONTAL CONTROL**

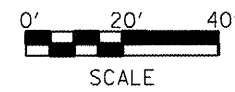
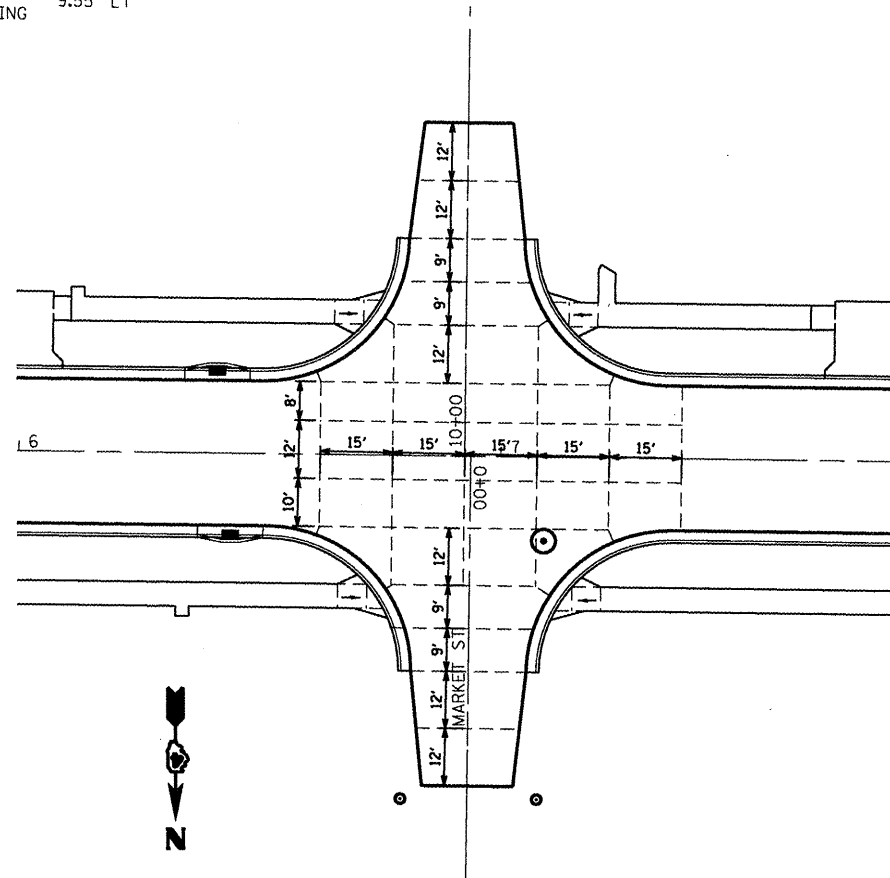


- NOTES:  
 1. SEE SIDEROAD PROFILES.  
 2. TYPICAL TRANSVERSE JOINT SPACING ON US 24 BETWEEN INTERSECTIONS SHALL BE 14'.

**VERTICAL CONTROL**



**PAVEMENT JOINTS**



LOCATION	STATION	OFFSET	ELEVATION
N. MARKET ST			
1	0+15.00	42.00	701.44
2	0+20.00	25.42	701.25
3	0+25.00	19.64	701.17
4	0+30.00	16.02	701.10
5	0+35.00	13.72	701.04
6	0+40.00	12.42	700.98
7	0+45.00	12.00	700.92
8	0+45.00	12.00	700.92
9	0+40.00	12.42	700.80
10	0+35.00	13.72	700.66
11	0+30.00	16.02	700.50
12	0+25.00	19.64	700.31
13	0+20.00	25.42	700.06
14	0+15.00	42.00	699.56

LOCATION	STATION	OFFSET	ELEVATION
S. MARKET ST			
20	10+15.00	42.00	701.47
21	10+20.00	25.42	700.84
22	10+25.00	19.64	700.52
23	10+30.00	16.02	700.29
24	10+35.00	13.72	700.09
25	10+40.00	12.42	699.92
26	10+45.00	12.00	699.64
27	10+45.00	12.00	699.64
28	10+40.00	12.42	699.83
29	10+35.00	13.72	699.89
30	10+30.00	16.02	699.93
31	10+25.00	19.64	699.97
32	10+20.00	25.42	699.89
33	10+15.00	42.00	699.59