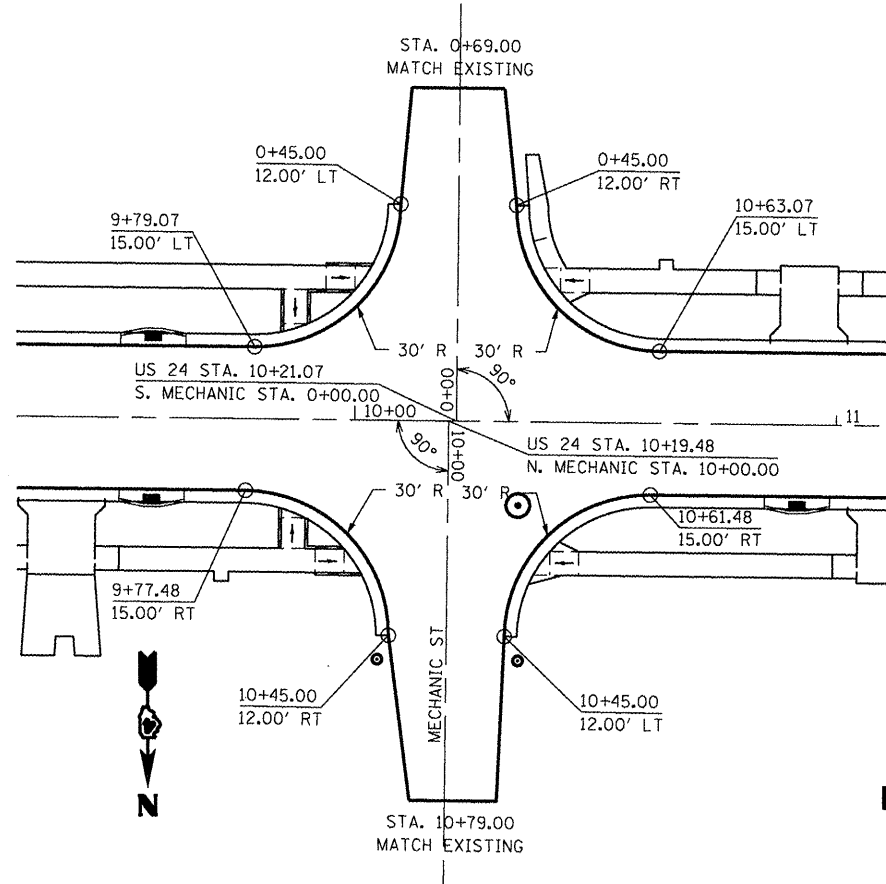


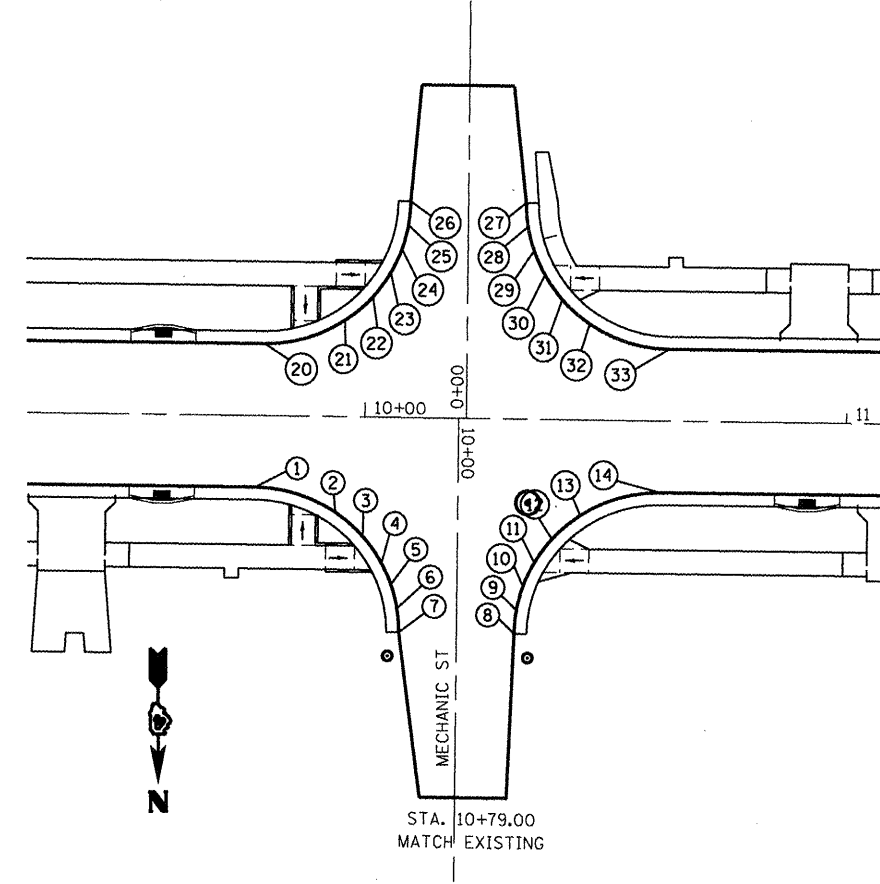
**HORIZONTAL CONTROL**



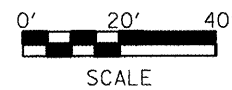
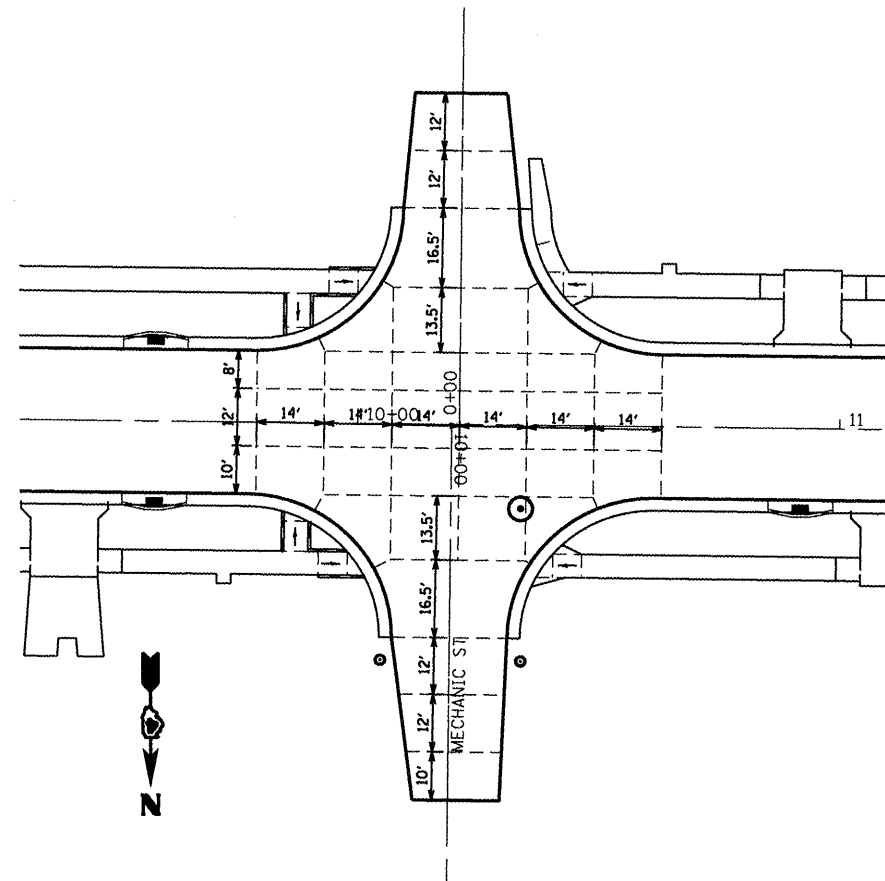
**NOTES:**

1. SEE SIDEROAD PROFILES.
2. TYPICAL TRANSVERSE JOINT SPACING ON US 24 BETWEEN INTERSECTIONS SHALL BE 14'.

**VERTICAL CONTROL**



**PAVEMENT JOINTS**



LOCATION	STATION	OFFSET	ELEVATION
N. MECHANIC ST			
1	10+15.00	42.00	694.44
2	10+20.00	25.42	694.33
3	10+25.00	19.64	694.28
4	10+30.00	16.02	694.24
5	10+35.00	13.72	694.21
6	10+40.00	12.42	694.17
7	10+45.00	12.00	694.14
8	10+45.00	12.00	694.14
9	10+40.00	12.42	694.03
10	10+35.00	13.72	693.90
11	10+30.00	16.02	693.76
12	10+25.00	19.64	693.60
13	10+20.00	25.42	693.39
14	10+15.00	42.00	693.00

LOCATION	STATION	OFFSET	ELEVATION
S. MECHANIC ST			
20	0+15.00	42.00	694.42
21	0+20.00	25.42	693.90
22	0+25.00	19.64	693.64
23	0+30.00	16.02	693.44
24	0+35.00	13.72	693.27
25	0+40.00	12.42	693.11
26	0+45.00	12.00	692.98
27	0+45.00	12.00	692.98
28	0+40.00	12.42	693.04
29	0+35.00	13.72	693.10
30	0+30.00	16.02	693.16
31	0+25.00	19.64	693.20
32	0+20.00	25.42	693.17
33	0+15.00	42.00	692.98