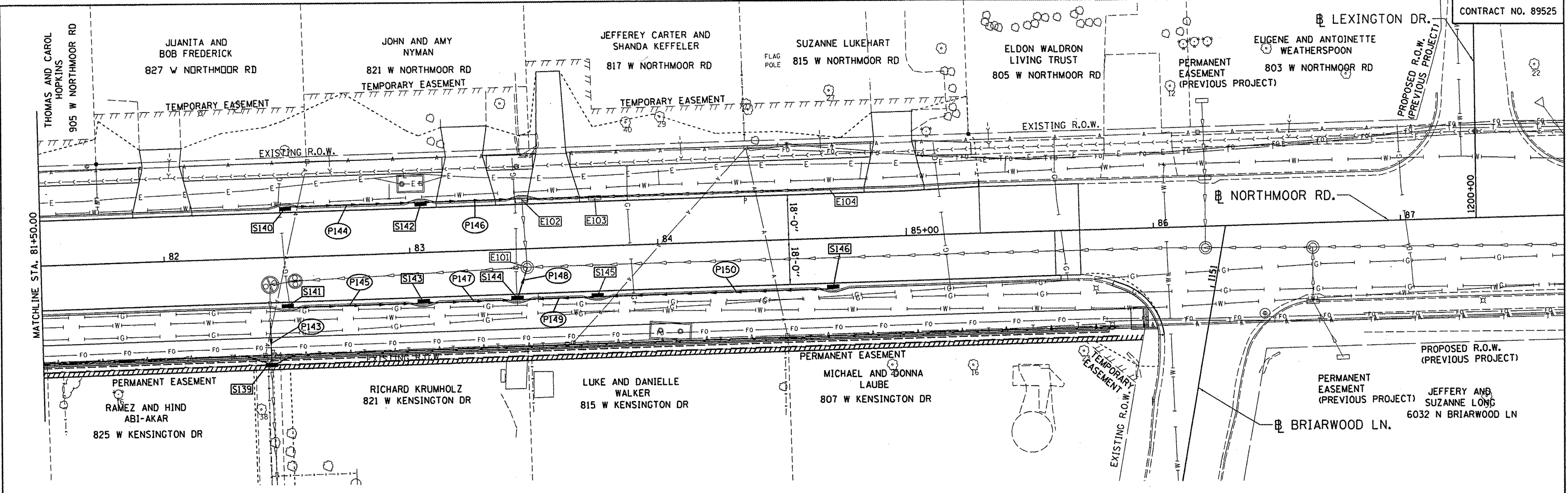


DATE	BY
DATE	BY
DATE	BY
DATE	BY
DATE	BY

© Copyright Hanson Professional Services Inc. 2012  
**HANSON**  
 Hanson Professional Services Inc.

DATE	BY
DATE	BY
DATE	BY
DATE	BY
DATE	BY

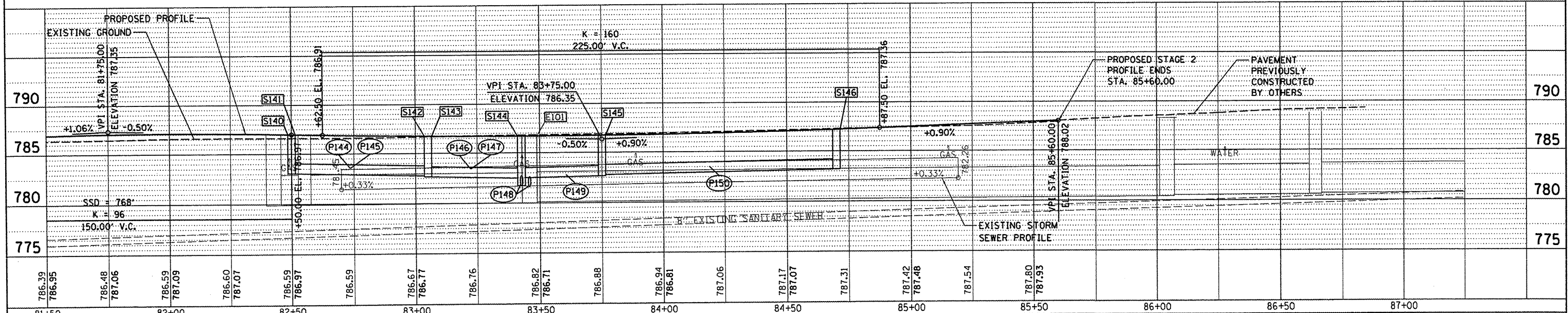


STRUCTURE NUMBER	STATION	OFFSET	TYPE	RIM ELEVATION	INVERT ELEVATIONS			
					N	S	E	W
S139	82+42.70	43.25	LT	783.17	780.65	781.26		
S140	82+50.00	20.25	LT	786.61			783.05	
S141	82+50.00	20.25	RT	786.61			783.05	
S142	83+05.00	20.25	LT	786.39			782.66	782.76
S143	83+05.00	20.25	RT	786.39			782.66	782.76
S144	83+42.63	20.25	RT	786.35	781.73		782.52	782.49
S145	83+75.00	20.25	RT	786.37			782.77	782.67
S146	84+70.00	20.25	RT	786.80			782.77	783.20
E101	83+47.02	7.23	RT	786.87	782.16	781.61	780.90	780.80
E102	83+45.83	19.83	LT	786.29		782.37	782.54	782.47
E103	83+75.00	20.25	LT	786.37			782.77	782.67
E104	84+70.00	20.25	LT	786.80	783.3			783.2

PIPE NUMBER	FROM STRUCTURE	U/S INVERT	TO STRUCTURE	D/S INVERT	CLASS/TYPE	DIAMETER	LENGTH	SLOPE	TRENCH BACKFILL
P143	EX SS	780.71	S139	780.65	STORM SEWERS, (WATER MAIN REQUIREMENTS) TYPE 1	18	15	0.40%	9.71
P144	S140	783.05	S142	782.76	STORM SEWERS, (WATER MAIN REQUIREMENTS) TYPE 1	12	52	0.56%	6.86
P145	S141	783.05	S143	782.76	STORM SEWERS, (WATER MAIN REQUIREMENTS) TYPE 1	12	52	0.56%	6.86
P146	S142	782.66	E102	782.47	STORM SEWERS, (WATER MAIN REQUIREMENTS) TYPE 1	12	38	0.50%	5.02
P147	S143	782.66	S144	782.49	STORM SEWERS, (WATER MAIN REQUIREMENTS) TYPE 1	12	35	0.49%	4.62
P148	S144	781.73	E101	781.61	STORM SEWERS, (WATER MAIN REQUIREMENTS) TYPE 2	12	9.5	1.26%	2.44
P149	S145	782.67	S144	782.52	STORM SEWERS, (WATER MAIN REQUIREMENTS) TYPE 1	12	29.5	0.51%	3.89
P150	S146	783.20	S145	782.77	STORM SEWERS, (WATER MAIN REQUIREMENTS) TYPE 1	12	92	0.47%	12.14

NOTE 1: THE STRUCTURES FOR INLETS E102, E103, AND E104 WERE PREVIOUSLY CONSTRUCTED AND COVERED. CONTRACTOR TO ADJUST INLETS TO FINAL GRADE AND PROVIDE AND INSTALL TYPE G-1 FRAME AND GRATES. COSTS FOR CONSTRUCTION SHALL BE PAID FOR AS INLETS TO BE ADJUSTED WITH NEW FRAME AND GRATE (SPECIAL).

\*EXISTING PIPE INVERTS ARE APPROXIMATE AND SHALL BE FIELD VERIFIED DURING CONSTRUCTION.



FILE NAME = I:\09Jobs\09L0027A\CADD\Road\Sheet\c-804.dwg	USER NAME = dawso00678	DESIGNED - JJW	REVISED -	STATE OF ILLINOIS DEPARTMENT OF TRANSPORTATION		NORTHMOOR ROAD STAGE 2 IMPROVEMENT DRAINAGE PLAN		F.A.U. RTE. 6647	SECTION 05-00302-01-PV	COUNTY PEORIA	TOTAL SHEETS 125	SHEET NO. 31
PLOT SCALE = 48.0000' / in.	PLOT DATE = 04/02/2012	CHECKED - MGD	REVISED -	SCALE: 1"=20'	SHEET NO. OF SHEETS	STA. 81+00.00 TO STA. 85+60.00	FED. ROAD DIST. NO. ILLINOIS	FED. AID PROJECT	CONTRACT NO. 89525	W-50931371		