

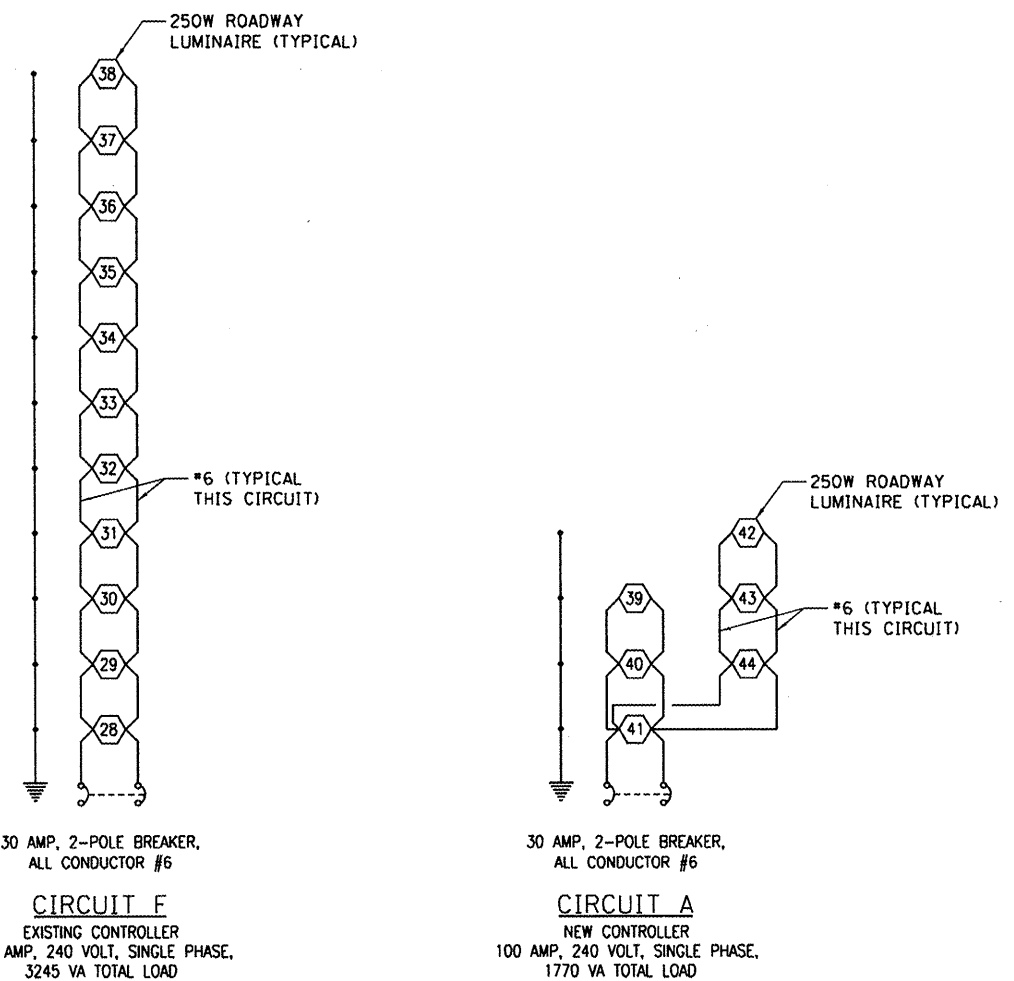
GENERAL NOTES

1. THE CONTRACTOR SHALL MAKE SPECIAL NOTE OF THE REQUIREMENT FOR BURIED WARNING TAPE, SPECIFIED AS PART OF "ELECTRIC CABLE IN CONDUIT" PAY ITEM. THE INSTALLATION OF THE TAPE SHALL BE INSPECTED AND APPROVED BY THE RESIDENT ENGINEER PRIOR TO BACKFILLING.
2. THE CONTRACTOR SHALL BE RESPONSIBLE FOR THE ESTABLISHMENT OF FINISHED GRADE. THE RESIDENT ENGINEER MAY ASSIST THE CONTRACTOR, AS APPLICABLE, BUT THE RESPONSIBILITY FOR COORDINATING THE FINISHED GRADE ELEVATION WITH THE TOP OF THE FOUNDATION HEIGHTS AND THE LIGHT SHALL REMAIN WITH THE CONTRACTOR.
3. NO POLES SHALL BE ERECTED UNTIL THE RESPECTIVE FOUNDATIONS HAVE CURED, AS APPROVED BY THE ENGINEER.
4. THE CONTRACTOR SHALL MAKE SPECIAL NOTE OF THE REQUIREMENTS FOR WIRE MARKERS AND TAG ALL WIRE MARKERS AND SHALL TAG ALL WIRE ACCORDINGLY.
5. EQUIPMENT GROUND CONDUCTORS SHALL BE SPLICED AND BONDED AT EACH LIGHT POLE.
6. SPLICES ARE NOT ALLOWED IN THE UNDERGROUND HANDHOLE. ALL SPLICING SHOULD BE AT POLE BASE.
7. CONDUIT MUST BE POSITIONED IN THE FIELD TO AVOID CONFLICT WITH TREES, BUSHES, DRAINS AND OTHER UTILITIES AND LANDSCAPING.
8. THE CONTRACTOR SHALL NOTIFY THE CITY OF PEORIA A MINIMUM OF 72 HOURS IN ADVANCE OF BEGINNING WORK.
9. THE CONTRACTOR SHALL ADJUST THE LOCATION OF PROPOSED LIGHT POLES OR UTILITIES AS DIRECTED BY IDOT FOR LIGHT POLES AND THE CITY OR ENGINEER IF A UTILITY CONFLICT EXISTS. TO A LOCATION APPROVED BY IDOT, THE CITY, OR ENGINEER. THIS WORK SHALL NOT BE PAID FOR SEPARATELY BUT SHALL BE CONSIDERED INCIDENTAL TO THE CONTRACT.
10. CITY OF PEORIA SHALL BE CONTACTED FOR ANY REQUIRED MODIFICATION TO THE LIGHT SYSTEM THAT ARE NOT SHOWN ON THE PLANS OR CONFLICTS WITH THE DETAILS SHOWN ON THESE PLANS.
11. CONTRACTOR SHALL ENSURE CONTINUOUS EQUIPMENT GROUND FROM THE CONTROLLER TO THE LAST LIGHT POLE OF EACH LIGHTING CIRCUIT. THIS REQUIREMENT IS PART OF ITEM AND WILL BE AT NO EXTRA COST TO THE PROJECT.
12. EACH LUMINAIRE SHOULD BE UL LISTED AND SHALL HAVE MAGREG TYPE BALLAST, PLUG-IN BASE IGNITOR MOUNTING ASSEMBLY, AND FIBER GASKET.

GENERAL SPECIFICATIONS

- THE WORK SHALL BE COMPLETED IN ACCORDANCE WITH THE APPLICABLE SECTIONS AND NOT LIMITED TO THE FOLLOWING:
1. "STANDARD SPECIFICATIONS FOR ROAD AND BRIDGE CONSTRUCTION", ADOPTED JANUARY 1, 2012. "SUPPLEMENTAL SPECIFICATIONS AND RECURRING SPECIAL PROVISIONS", ADOPTED JANUARY 1, 2012.
 2. "HIGHWAY STANDARDS" ILLINOIS DEPARTMENT OF TRANSPORTATION.
 3. "NATIONAL ELECTRIC CODE" NEC.

© Copyright Hanson Professional Services Inc. 2012
HANSON
 Hanson Professional Services Inc.



ELECTRICAL LEGEND

- E — EXISTING UNIT DUCT
- E — NEW UNIT DUCT
- ○ EXISTING LIGHTING UNIT
- ● NEW LIGHTING UNIT
- ⎓ GROUND ROD
- ▣ HANDHOLE
- ⊠ NEW CONTROLLER

ROADWAY LIGHTING SUMMARY OF QUANTITIES			
IDOT CODE	ITEM DESCRIPTION	ITEM QUANTITY	
		UNITS	QUANTITY
80400100	ELECTRIC SERVICE INSTALLATION	EACH	1
81028340	UNDERGROUND CONDUIT, PVC, 1 1/2" DIA.	FOOT	2500
81702130	ELECTRIC CABLE IN CONDUIT, 600V (XLP-TYPE USE) 1/C NO. 6	FOOT	7500
82102250	LUMINAIRE, SODIUM VAPOR, HORIZONTAL MOUNT, 250 WATT	EACH	17
82500350	LIGHTING CONTROLLER, BASE MOUNTED, 240VOLT, 100 AMP	EACH	1
83002600	LIGHT POLE, ALUMINUM, 40 FT. M.H., 15 FT. DAVIT ARM	EACH	17
83600300	LIGHT POLE FOUNDATION, 30" DIAMETER	FOOT	102
83800105	BREAKAWAY DEVICE, TRANSFORMER BASE, 11.5 INCH BOLT CIRCLE	EACH	17