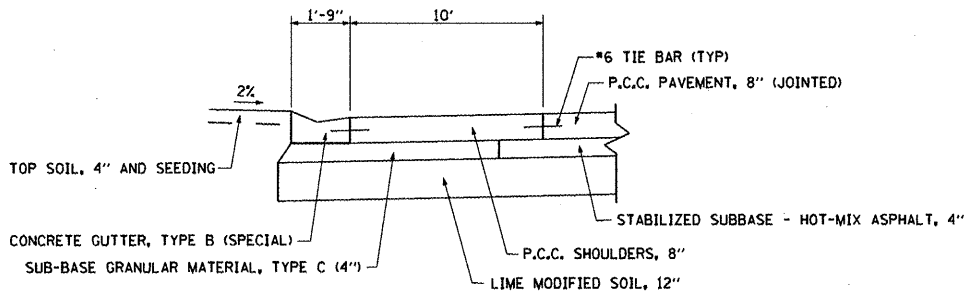


PROPOSED TYPICAL SECTION - VETERANS DRIVE

STA. 99+85.66 TO STA. 103+30.45
 STA. 117+98.98 TO STA. 140+36.68

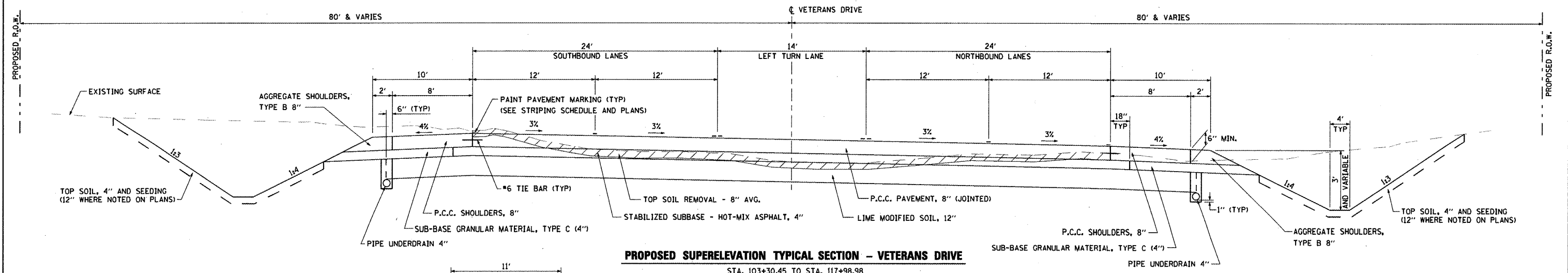
Structural Design Traffic (S.D.T.): Year 2023; P.C. 8,480
 Class I Road for Street; S.U. 461; M.U. 277
 Minimum Soil Support: IBR = 3.0
 Percent of S.D.T. in Design Lane: P = 92%, S = 5%, M = 3%
 T.F. = 2.34
 Pavement Structural Materials:
 Surface: PORTLAND CEMENT CONCRETE PAVEMENT, 8" (JOINTED)
 Sub-base Type: STABILIZED SUBBASE, 4"; LIME MODIFIED SOIL, 12"

NOTE: USE CLASS 3 SEEDING ON ALL BACK SLOPES WITH SLOPES GREATER THAN 1:4.



DETAIL - CONCRETE GUTTER, TYPE B (SPECIAL) AND P.C.C. SHOULDERS, 8"

STA. 99+95 - 100+78, LT.
 STA. 136+62, 62' LT. (VETERANS DR.) - STA. 703+90 RT. (SHERIDAN RD.)



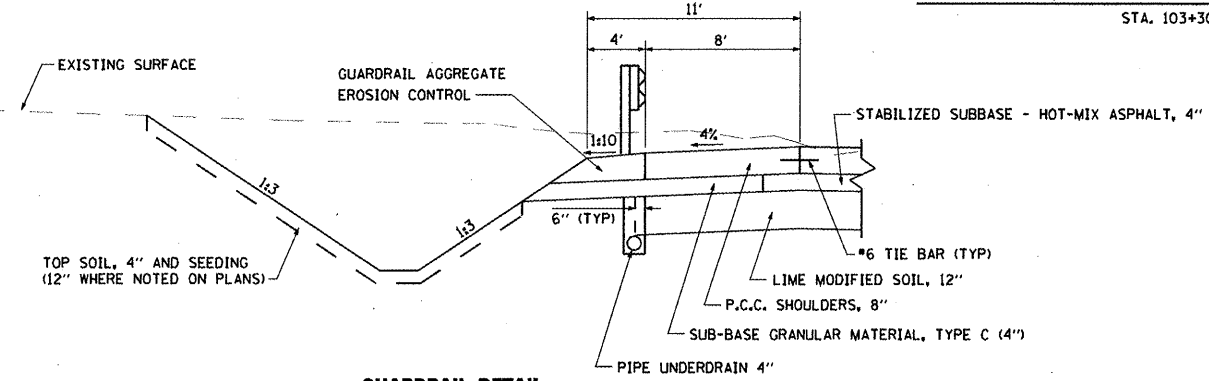
PROPOSED SUPERELEVATION TYPICAL SECTION - VETERANS DRIVE

STA. 103+30.45 TO STA. 117+98.98

Structural Design Traffic (S.D.T.): Year 2023; P.C. 8,480
 Class I Road for Street; S.U. 461; M.U. 277
 Minimum Soil Support: IBR = 3.0
 Percent of S.D.T. in Design Lane: P = 92%, S = 5%, M = 3%
 T.F. = 2.34
 Pavement Structural Materials:
 Surface: PORTLAND CEMENT CONCRETE PAVEMENT, 8" (JOINTED)
 Sub-base Type: STABILIZED SUBBASE, 4"; LIME MODIFIED SOIL, 12"

STANDARD SLOPE CONVERSIONS	
1.5%	= 3/16 "/FT.
2%	= 1/4 "/FT.
4%	= 1/2 "/FT.

NOTE: USE CLASS 3 SEEDING ON ALL BACK SLOPES WITH SLOPES GREATER THAN 1:4.



GUARDRAIL DETAIL

RT. STA. 110+69.8 TO STA. 114+69.8
 LT. STA. 113+28.9 TO STA. 118+79.6

FILE NAME =	USER NAME = IDOT	DESIGNED = REW/KRS	REVISED =	STATE OF ILLINOIS DEPARTMENT OF TRANSPORTATION	VETERANS DRIVE IMPROVEMENTS PROPOSED TYPICAL SECTIONS	F.A.U. RTE.	SECTION	COUNTY	TOTAL SHEETS	SHEET NO.	
x:\projects\200805025\dgn\plans and xref	a\TYPSECPR01.dgn	DRAWN = CAM	REVISED =			6768	10-00169-00-RP	TAZEWELL	98	9	
PLOT SCALE = NOT TO SCALE	CHECKED = KMC	DATE = 3-21-12	REVISED =			CONTRACT NO. 89588					
PLOT DATE = 4/12/2012			REVISED =			ILLINOIS FED. AID PROJECT					