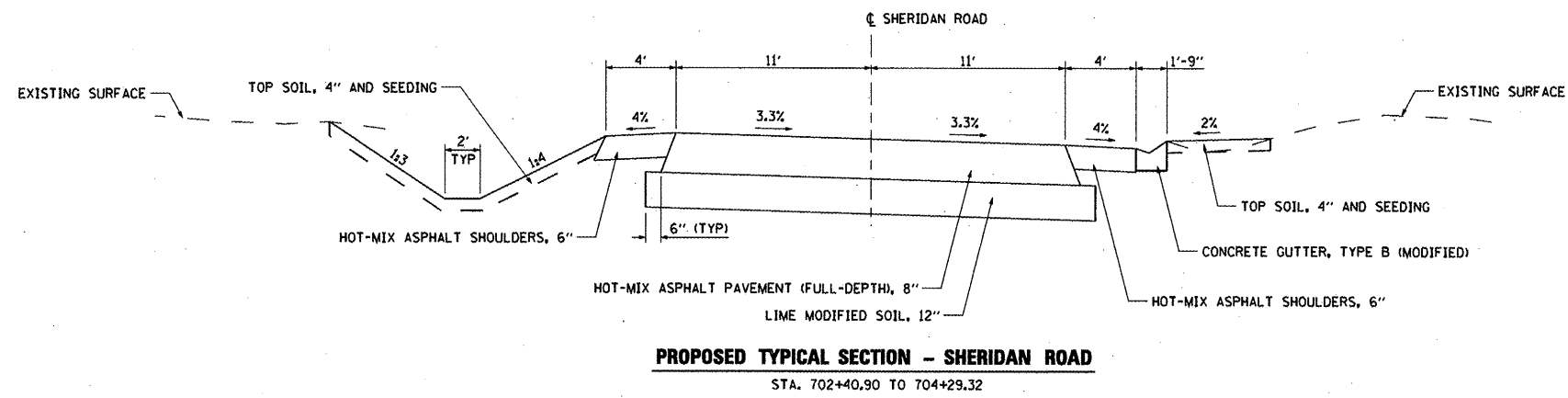
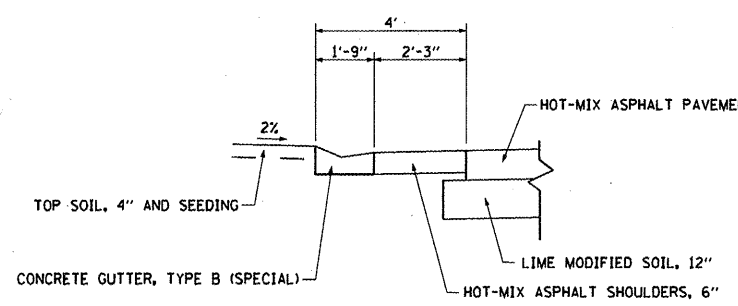
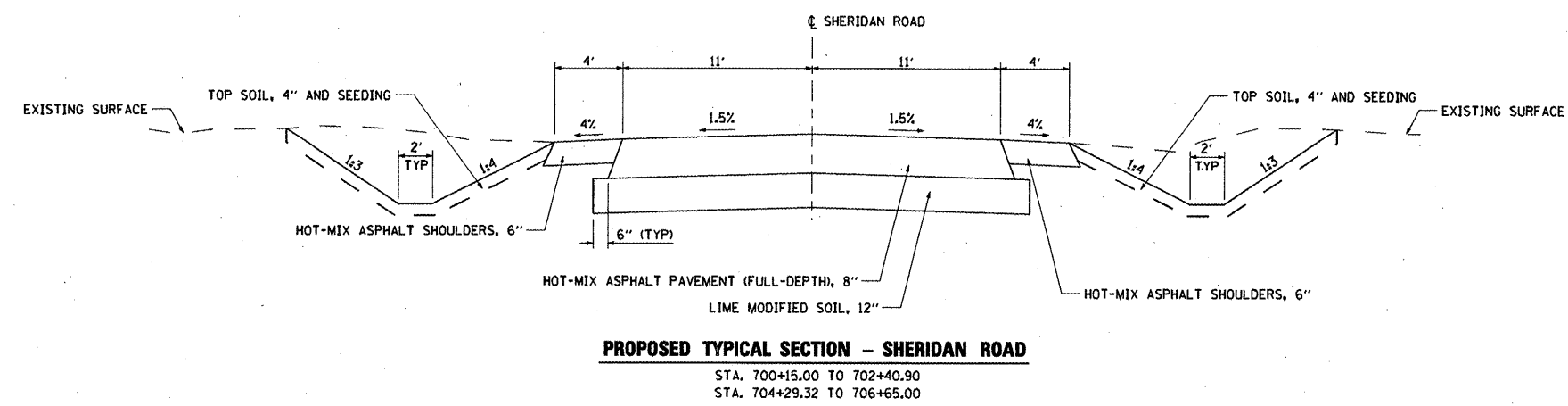


PROPOSED TYPICAL SECTION - SHERIDAN ROAD
STA. 706+65.00 TO 707+50.00

DETAIL - CONCRETE GUTTER, TYPE B (SPECIAL) AND HOT-MIX ASPHALT SHOULDERS, 6"
STA. 700+15 - 702+88, L.T.



PROPOSED TYPICAL SECTION - SHERIDAN ROAD
STA. 702+40.90 TO 704+29.32



PROPOSED TYPICAL SECTION - SHERIDAN ROAD
STA. 700+15.00 TO 702+40.90
STA. 704+29.32 TO 706+65.00

NOTE: USE CLASS 3 SEEDING ON ALL BACK SLOPES WITH SLOPES GREATER THAN 1:4.

STANDARD SLOPE CONVERSIONS	
1.5%	= 3/16 "/FT.
2%	= 1/4 "/FT.
4%	= 1/2 "/FT.

Structural Design Traffic (S.D.T.): Year 2023; P.C. 2,432
Class II Road (or Street) S.U. 132, M.U. 79
Minimum Soil Support: IBR = 3.0
Percent of S.D.T. In Design Lane: P = 92%, S = 5%, M = 3%
T.F. = 0.37
Pavement Structural Materials:
Surfaces: 8" HOT-MIX ASPHALT PAVEMENT (FULL-DEPTH)
Sub-base Type: LIME MODIFIED SOIL, 12"

FILE NAME =	USER NAME = IDOT	DESIGNED <i>REW/KRS</i>	REVISED -	STATE OF ILLINOIS DEPARTMENT OF TRANSPORTATION	VETERANS DRIVE IMPROVEMENTS SHERIDAN ROAD PROPOSED TYPICAL SECTIONS	F.A.U. RTE.	SECTION	COUNTY	TOTAL SHEETS	SHEET NO.	
xi:\projects\200805025\ dgn\plans and xref	sa\TYPSECP01.dgn	DRAWN <i>CAM</i>	REVISED -			6768	10-00169-00-RP	TAZEWELL	98	11	
PLOT SCALE = NOT TO SCALE	CHECKED <i>KMC</i>	REVISIED -				CONTRACT NO. 89588					
PLOT DATE = 4/12/2012	DATE <i>3-21-12</i>	REVISED -				ILLINOIS FED. AID PROJECT					