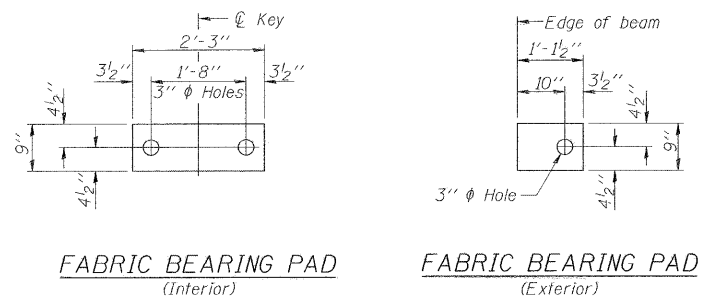


ROUTE NO.	SECTION	COUNTY	SHEET NO.	SHEET
TR 16	*	Vermilion	12	7
FED. ROAD DIST. NO. 7		ILLINOIS FED. AID PROJECT		



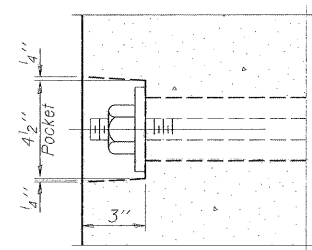
FABRIC BEARING PAD (Interior)

FABRIC BEARING PAD (Exterior)

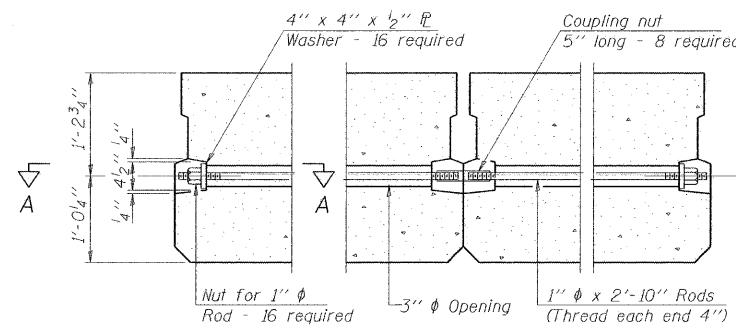
Notes:

All bearing pads shall be 1" thick.
Omit holes when using expansion bearings.
Expansion bearing pad shall be bonded to the substructure.

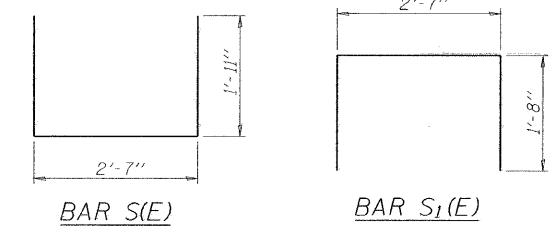
FIXED



SECTION A-A

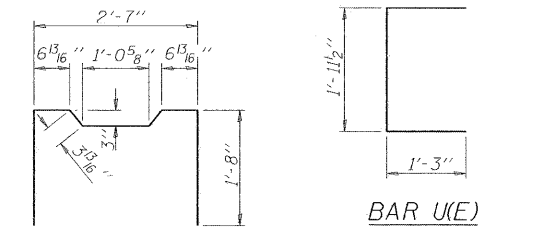


TYPICAL TRANSVERSE TIE ASSEMBLY



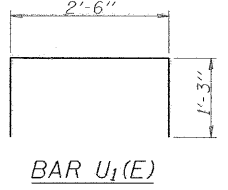
BAR S(E)

BAR S1(E)

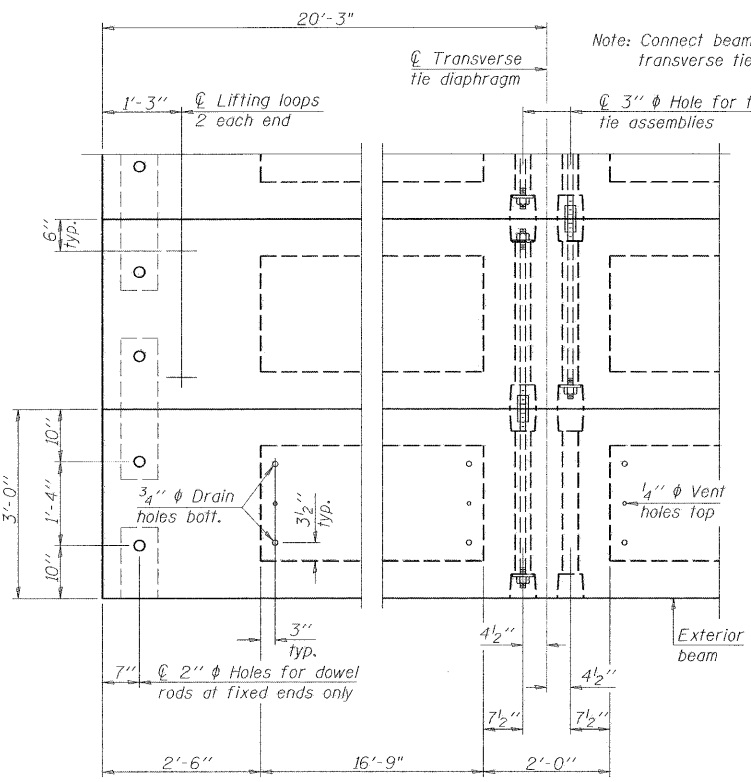


BAR S2(E)

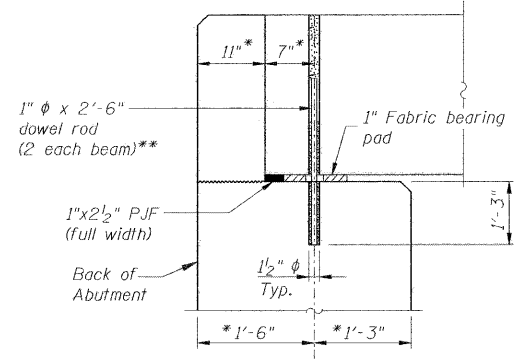
BAR U(E)



BAR U1(E)

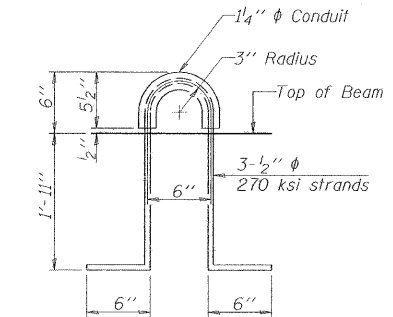


PLAN VIEW



SECTION AT ABUTMENT

* Perpendicular to C of abutment or pier
** Dowel rods to be grouted after beams are in place and prior to grouting the shear keys



LIFTING LOOP DETAIL

BILL OF MATERIAL

Precast Prestressed Conc. Deck Bms. (27" depth)	Sq. Ft.	1625
---	---------	------

NOTES

Prestressing steel shall be uncoated high strength, low relaxation 7-wire strand, Grade 270. The nominal diameter shall be 1/2" and the nominal cross-sectional area shall be 0.153 sq. in. The 1" rods in the transverse tie assembly shall be tightened to a snug fit and the threads set. Pockets on exterior faces of bridge shall be filled with grout after transverse tie assembly is in place.
Reinforcement bars shall conform to ASTM A 706, Grade 60. (See Special Provisions).
Two 1/8" fabric adjusting shims of the dimensions of the exterior bearing pad shall be provided for each bearing pad location.
A minimum 2 1/2" lifting pin shall be used to engage the lifting loops during handling.
Corrosion Inhibitor, per Article 1020.05(b)(12) and 1021.06 of the Standard Specifications, shall be used in the concrete for precast prestressed concrete deck beams.
Compressive strength of prestressed concrete, f'c, shall be 6000 psi.
Compressive strength of prestressed concrete at release, f'ci, shall be 5000 psi.

PD-2736-0D 7-1-10

27" x 36" PPC DECK BEAM
STRUCTURE NO. 092-3450

DSGN	K.J. Hoffmann				
DR	N.J. Liggett				
CHK	J.R. Wolf				
APVD	J.A. Fraenhoffer	NO.	DATE	REVISION	BY



FRAUENHOFFER & ASSOCIATES
A division of Engineering Resource Associates, Inc.
Consulting Engineers, Scientists, & Surveyors

3002 CROSSING COURT
CHAMPAIGN, IL 61822
PHONE (217) 351-6268
FAX (217) 355-1902

SUPERSTRUCTURE DETAILS (SHEET 2 OF 2)

TR16 (170E) OVER BRANCH OF PIGEON CREEK
SEC 10-02146-00-BR
VERMILION COUNTY

SHEET	7
DWG NO.	10050SUP.dgn
DATE	AUG 2011
PROJ NO.	10050