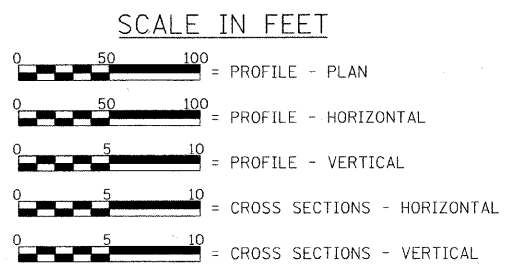


- INDEX OF SHEETS**
- 1 - TITLE SHEET
 - 2 - SUMMARY OF QUANTITIES, DETAILS & TYPICAL SECTIONS
 - 3 - PLAN & PROFILE
 - 4 - RIPRAP LAYOUT AND GRADING PLAN
 - 5 - GENERAL PLAN & ELEVATION
 - 6 & 7 - SUPERSTRUCTURE
 - 8 - RAILING
 - 9 - ABUTMENTS
 - 10 - METAL SHELL PILE DETAILS
 - 11 - 15 - CROSS SECTIONS

- STANDARDS**
- STANDARD 515001-03
 - STANDARD 630301-05
 - STANDARD 701011-02
 - STANDARD 701901-02
 - STANDARD BLR 21-9
 - STANDARD BLR 27-1

- LIST OF UTILITIES**
- FRONTIER COMMUNICATIONS
1-800-921-8101
- MENARD ELECTRIC COOPERATIVE
14300 STATE HWY 97
P.O. BOX 200
PETERSBURG, ILLINOIS 62675
1-800-872-1203
1-217-632-7746



LAND SECTION - 21
LAND QUARTER SECTION - N.E.
FUNCTIONAL CLASSIFICATION: MAJOR COLLECTOR (NON-URBAN)
A.D.T. - 550 (2004)
A.D.T. - 725 (2032)
50 M.P.H. DESIGN SPEED

TOLL FREE
"JOINT UTILITY LOCATION INFORMATION FOR EXCAVATORS"
(J.U.L.I.E.) TELEPHONE NUMBER
1-800-892-0123

CONTRACT NO. 93561

STATE OF ILLINOIS
DEPARTMENT OF TRANSPORTATION

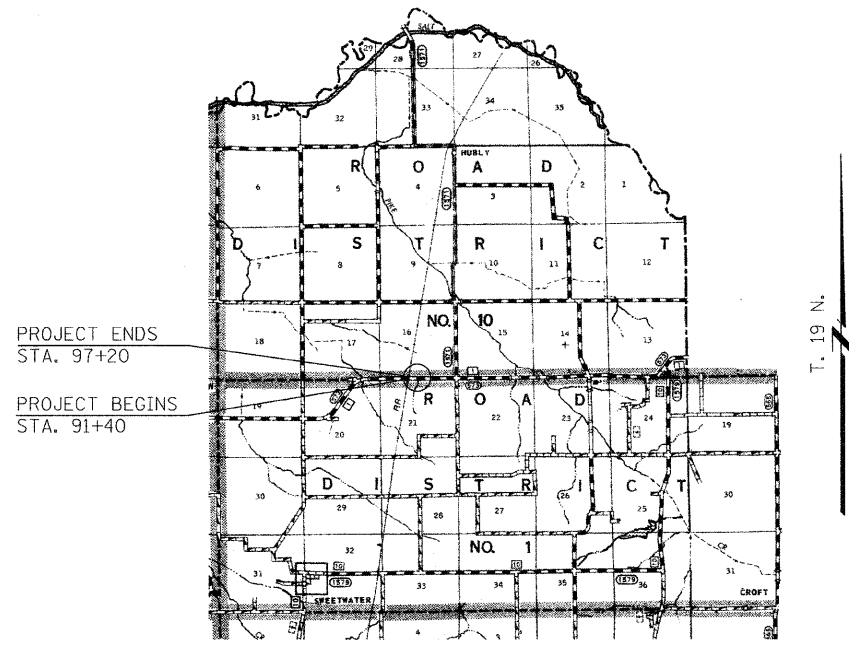
**PLANS FOR PROPOSED
SURFACE TRANSPORTATION /RURAL PROGRAM**

F.A.S. 573 (C.H. 1) OVER UNNAMED STREAM
SECTION 10-00060-00-BR
PROJECT RS-0573(318)

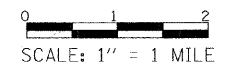
MENARD COUNTY / [REDACTED]

C-96-211-12

R. 5 W. 3rd P.M.



LOCATION PLAN
LENGTH OF SECTION - 580.00 FEET = 0.110 MILES



EXISTING STRUCTURE: SINGLE SPAN PRECAST CONCRETE DECK BEAMS SUPPORTED BY CLOSED TIMBER ABUTMENTS WITH TIMBER WINGWALLS. ±20'-3" BK.-BK. ABUTMENTS, ±30'-3" OUT.-OUT. DECK. CONCRETE CURBS AND STEEL RAILING. ±0° SKEW. EXIST. S.N. - NONE

PROPOSED STRUCTURE: SINGLE SPAN PRECAST PRESTRESSED CONCRETE DECK BEAM BRIDGE (27" DEPTH) ON OPEN CONCRETE ABUTMENTS. 30'-0" OUT.-OUT. DECK, 60'-0" BK.-BK. ABUTMENTS. STEEL RAILING TYPE S-1, 0° SKEW. PROP. S.N. - 065-3125



Christophe P. Koleski 11/15/11
EXPIRATION: 11/30/2011

APPROVED Nov. 14, 2011
Thomas R. Cannon
COUNTY ENGINEER

PASSED December 14, 2011
Thomas H. Koleski
DISTRICT SIX ENGINEER OF LOCAL ROADS & STREETS

PASSED December 14, 2011
Ron A. Chamberlain
DISTRICT SIX CONSTRUCTION ENGINEER

Releasing For Bid Based on Limited Review December 14, 2011
Ray J. Smith
DEPUTY DIRECTOR OF HIGHWAYS, REGION FOUR ENGINEER

STATE OF ILLINOIS
DEPARTMENT OF TRANSPORTATION

FILE NAME: #FILEL#	USER NAME: #USER#	DESIGNED	REVISED	<p>Allen Henderson & Associates, Inc. Civil and Structural Engineers Springfield, IL 62703 Phone: (217)544-8033 IL Design Firm No. 184-001907</p>	<p>TITLE SHEET</p> <p>SCALE: 1" = 1 MILE SHEET NO. 1 OF 15 SHEETS STA. 91+40.00 TO STA. 97+20.00</p>	C.H. RTE.	SECTION	COUNTY	TOTAL SHEETS	SHEET NO.	
	PLOT SCALE: #SCALE#	DRAWN	REVISED			1	10-00060-00-BR	MENARD	15	1	
	PLOT DATE: #DATE#	CHECKED	REVISED			CONTRACT NO. 93561					
		DATE	REVISED			FED. ROAD DIST. NO. ILLINOIS FED. AID PROJECT					