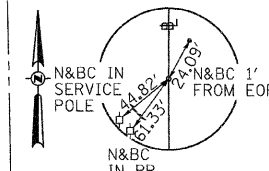
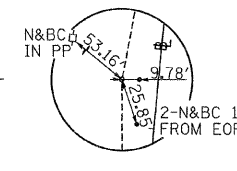


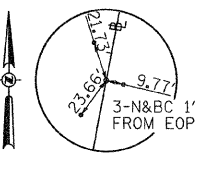
POT STA 23+80.00
MAG-NAIL



PC STA 32+80.22
MAG-NAIL



PI STA 36+93.44
5/8" 1-ROD



PT STA 41+04.07
MAG-NAIL

T 20 N, R 7 W, 3rd PM
SECTION 2

DAVID MONTGOMERY

- ① STA 30+00
40' LT
- ② STA 30+25
60' LT

- ③ TEMPORARY EASEMENT FOR PURPOSE OF RECONSTRUCTING ENTRANCE
- ④ STA 29+35
40' LT
- ⑤ STA 29+35
80' LT
- ⑥ STA 29+75
80' LT
- ⑦ STA 29+75
40' LT
- ⑧ PROPOSED PIPE CULVERT
CLASS D, TYPE 2, 15" x 34"
USFL 510.56, STA 29+36.11, 32.1' LT
DSFL 510.39, STA 29+69.99, 35.0' LT
- ⑨ PROPOSED PIPE CULVERT
CLASS D, TYPE 2, 15" x 40"
USFL 509.49, STA 30+94.80, 37.1' RT
DSFL 509.29, STA 30+54.82, 38.5' RT
- ⑩ PROPOSED PIPE CULVERT
CLASS D, TYPE 1, 15" x 32"
USFL 508.76, STA 31+33.49, 37.8' LT
DSFL 508.60, STA 31+01.99, 43.5' LT

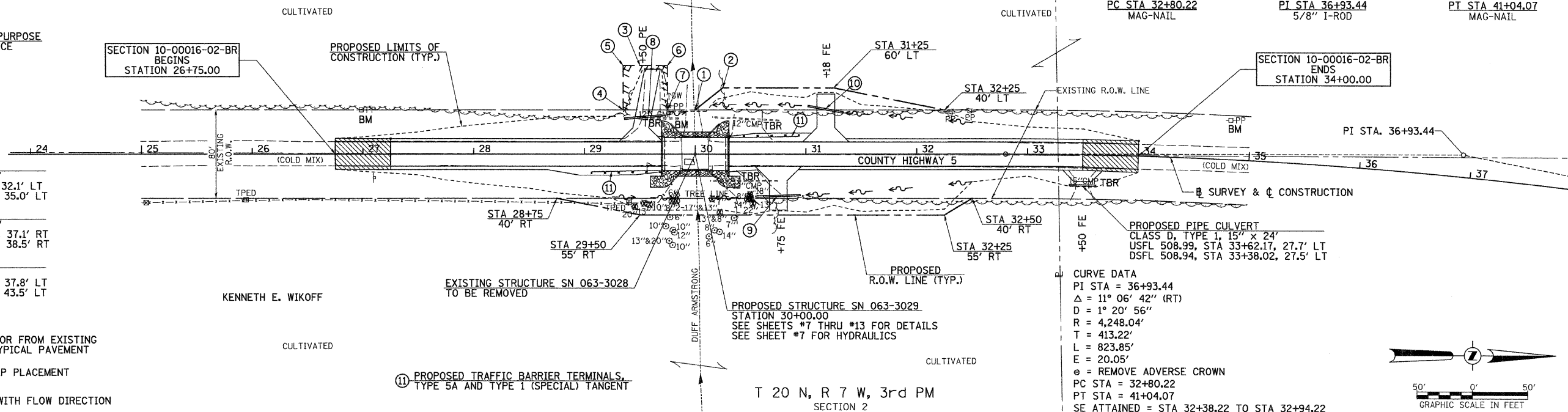
LEGEND

- TRANSITION TO OR FROM EXISTING TO PROPOSED TYPICAL PAVEMENT
- PROPOSED RIPRAP PLACEMENT
- SPECIAL DITCH WITH FLOW DIRECTION

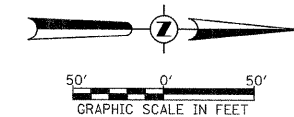
SECTION 10-00016-02-BR
BEGINS
STATION 26+75.00

PROPOSED LIMITS OF
CONSTRUCTION (TYP.)

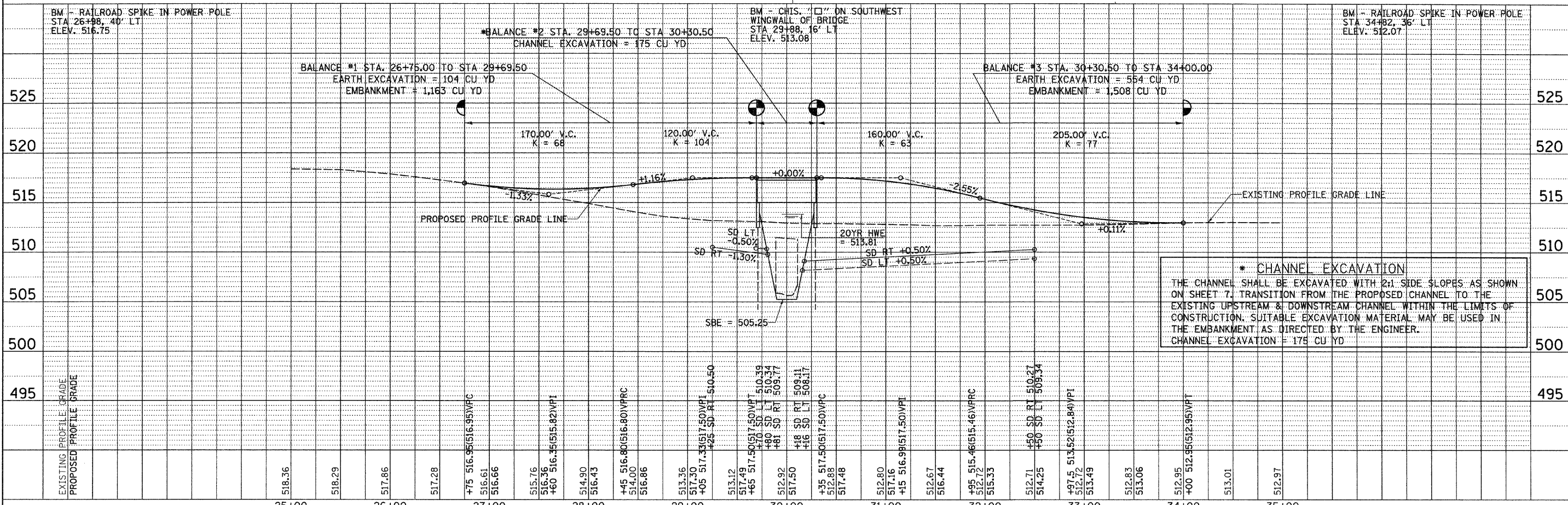
SECTION 10-00016-02-BR
ENDS
STATION 34+00.00



CURVE DATA
PI STA = 36+93.44
 $\Delta = 11^\circ 06' 42''$ (RT)
 $D = 1^\circ 20' 56''$
 $R = 4,248.04'$
 $T = 413.22'$
 $L = 823.85'$
 $E = 20.05'$
 $e =$ REMOVE ADVERSE CROWN
PC STA = 32+80.22
PT STA = 41+04.07
SE ATTAINED = STA 32+38.22 TO STA 32+94.22



T 20 N, R 7 W, 3rd PM
SECTION 2



* CHANNEL EXCAVATION
THE CHANNEL SHALL BE EXCAVATED WITH 2:1 SIDE SLOPES AS SHOWN ON SHEET 7. TRANSITION FROM THE PROPOSED CHANNEL TO THE EXISTING UPSTREAM & DOWNSTREAM CHANNEL WITHIN THE LIMITS OF CONSTRUCTION. SUITABLE EXCAVATION MATERIAL MAY BE USED IN THE EMBANKMENT AS DIRECTED BY THE ENGINEER.
CHANNEL EXCAVATION = 175 CU YD

FILE NAME = V:\Bridges\2964 - Mason\2964p001.dgn	USER NAME = jwhite	DESIGNED -	REVISED -	MASON COUNTY COUNTY HIGHWAY 5 OVER DUFF ARMSTRONG DITCH	PLAN AND PROFILE	F.A.S. RTE. 572	SECTION 10-00016-02-BR	COUNTY MASON	TOTAL SHEETS 22	SHEET NO. 6
PLOT SCALE = 50.0000' / IN.	CHECKED -	REVISED -	SCALE: 1"=50'			SHEET NO. 1 OF 1 SHEETS	STA. 26+75.00 TO STA. 34+00.00	FED. ROAD DIST. NO. 7 (ILLINOIS)	FED. AID PROJECT BRS-0572(305)	
PLOT DATE = 10/24/2011	DATE -	REVISED -				CONTRACT NO. 93568				