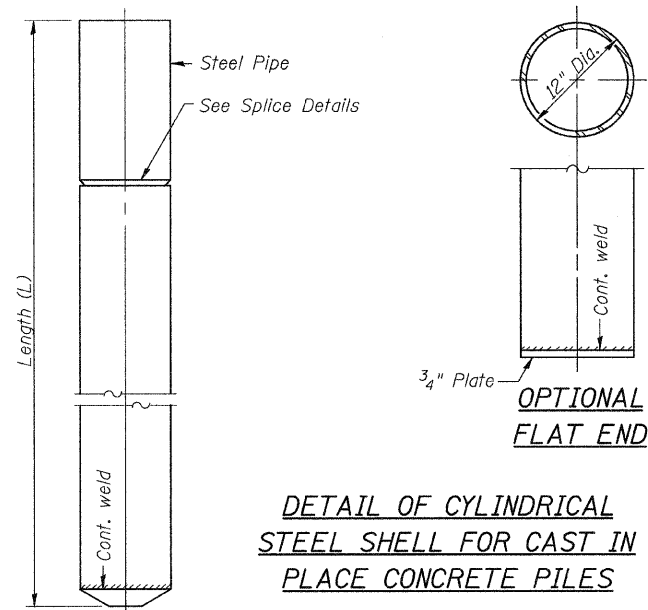
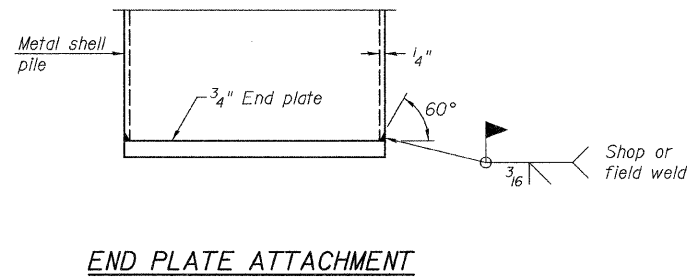


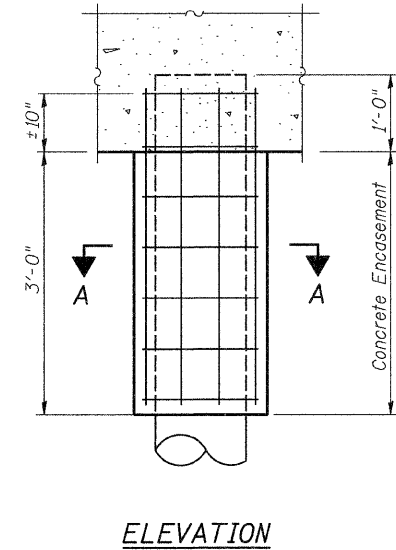
Notes: Driving and bearing ends of pipe shall be cut square. The thickness of the shell shall be 0.25 inches with a tolerance of 5%. The shell shall be according to Article 1006.05(a) of the Standard Specifications, and shall be ASTM A252 Grade 3.



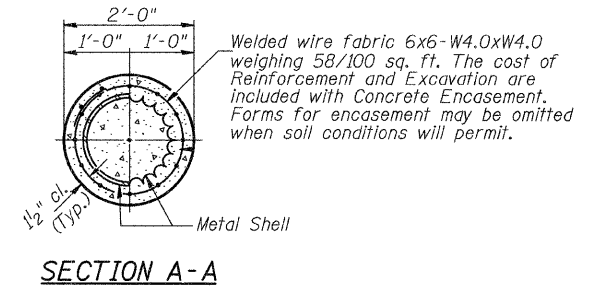
**DETAIL OF CYLINDRICAL STEEL SHELL FOR CAST IN PLACE CONCRETE PILES**



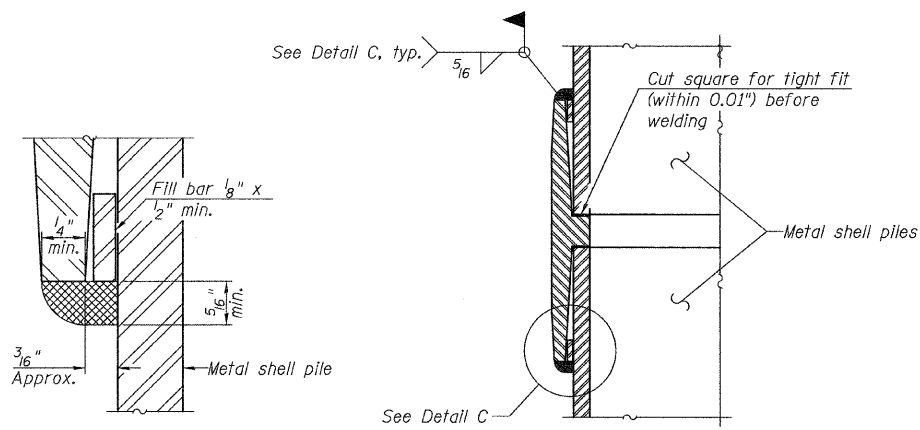
**END PLATE ATTACHMENT**



**ELEVATION**



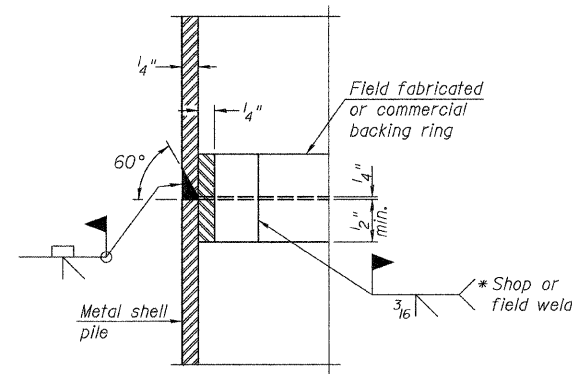
**SECTION A-A  
DETAIL OF METAL SHELL PILE ENCASEMENT AT ABUTMENTS**



**DETAIL C**

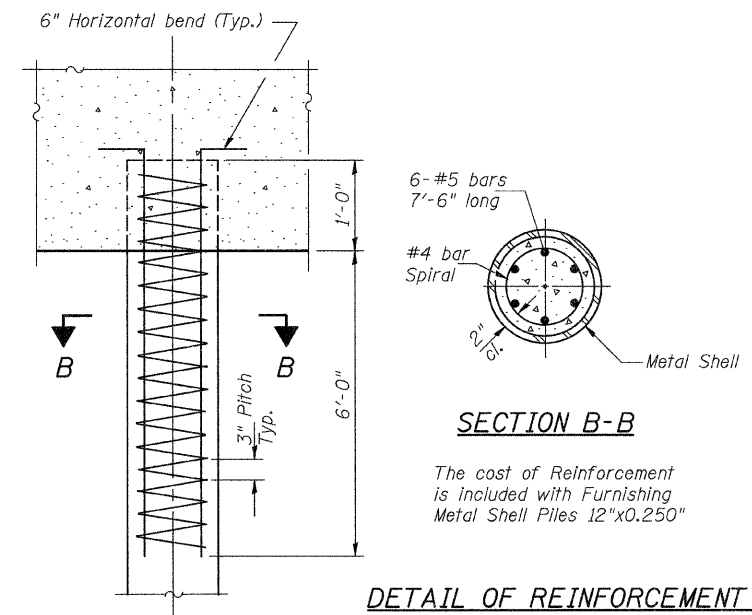
**WELDED COMMERCIAL SPLICE**

Notes:  
The 1/8" x 1/2" min. fill bar may be constructed of 2 bars with a 1/8" max. gap between them.  
Pile segments shall be driven to solid contact with splicer before welding.



**COMPLETE PENETRATION WELD SPLICE**

\* Field fabricated backing ring may be made from pile shell by removing segment to allow reducing circumference and vertically rejoin with partial joint penetration weld.



**SECTION B-B**

**DETAIL OF REINFORCEMENT FOR METAL SHELLS AT ABUTMENTS**

The cost of Reinforcement is included with Furnishing Metal Shell Piles 12"x0.250"

**METAL SHELL PILE DETAILS  
MASON COUNTY  
SECTION 10-00016-02-BR  
C.H. 5 OVER DUFF ARMSTRONG DITCH**

SHEET NO. 7 7 SHEETS	ROUTE NO. CH 5	SECTION 10-00016-02-BR	COUNTY MASON	TOTAL SHEETS 22	SHEET NO. 13
	S.N. 063-3029		CONTRACT NO. 93568		
	FED. ROAD DIST. NO. 7 ILLINOIS		FED. AID PROJECT BRS-0572(305)		